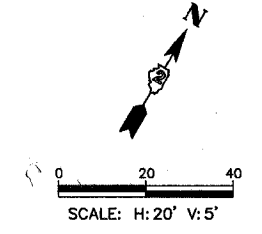
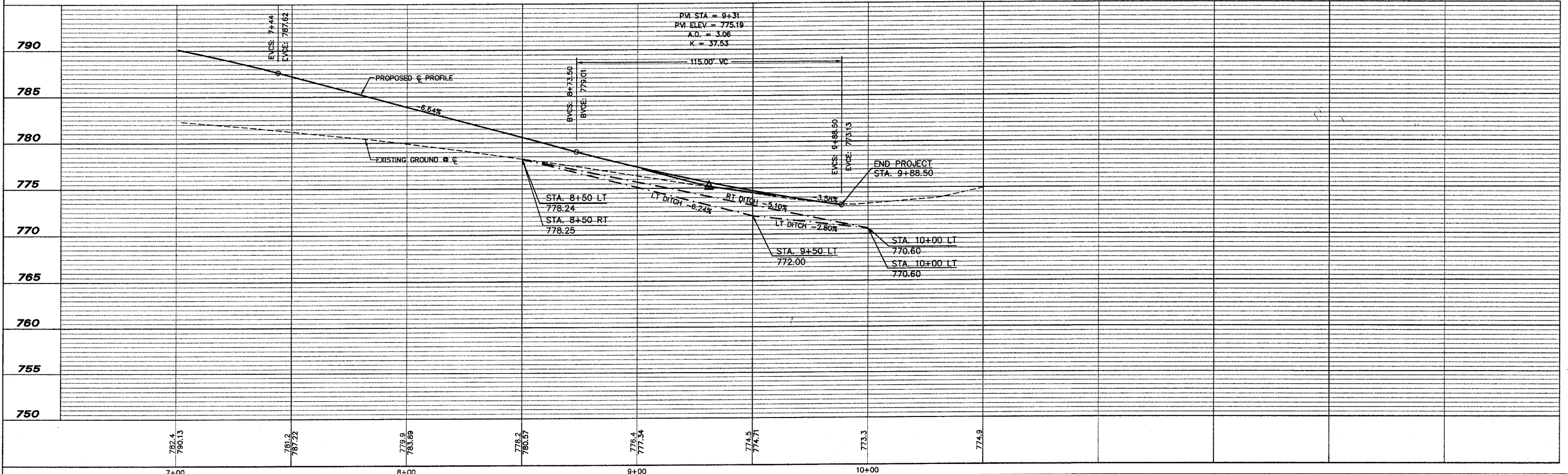


- LEGEND**
- REMOVAL ITEMS
 - TREE REMOVAL (ACRE)
 - Ⓟ PIPE CULVERTS, CLASS D, TYPE 2, 15" 46 LF END SECTIONS, 15" 2 EACH USFL=779.88, STA. 7+49.83 DSFL=779.72, STA. 8+00.17
 - Ⓞ PIPE CULVERTS, CLASS D, TYPE 1, 15" 35 LF END SECTIONS, 15" 2 EACH USFL=775.65, STA. 8+83.56 DSFL=775.04, STA. 9+18.56
 - Ⓢ PIPE CULVERTS, CLASS D, TYPE 1, 15" 30 LF USFL=775.41, STA. 8+85.00 DSFL=774.59, STA. 9+15.00



- NOTES:**
1. ALL PROPOSED COMBINATION CONCRETE CURB & GUTTER SHALL BE B-6.24, UNLESS OTHERWISE NOTED.
 2. ALL RETAINING WALL SHALL BE MODULAR BLOCK RETAINING WALLS.
 3. FOR EROSION CONTROL, SEE SHEET 15.



| REVISIONS | | |
|-----------|---|--------|
| NO. | ITEM | DATE |
| 1. | MOVE DRIVE FROM STA. 8+77.05 LT TO 9+01.76 LT | 3/7/06 |

| | |
|-------------|-----------------|
| SCALE: | HORIZ. 1" = 20' |
| | VERT. 1" = 5' |
| DRAWN BY: | JUB/DAC |
| CHECKED BY: | JAK/SAS |
| DATE: | 2/9/06 |

McCLURE ENGINEERING ASSOCIATES, INC.
 1138 Columbus Street
 Ottawa, Illinois 61350
 (815) 433-2080
 Design Firm License: Illinois #184-000616
 Copyright 2006 by McClure Engineering Associates, Inc.

PLAN & PROFILE
HIGH STREET BRIDGE REPLACEMENT
BUDA, ILLINOIS
 FILE NAME: M:\DRAWINGS\Buda\High St Bridge\BASE-Elevated-2005.dwg
 JOB No.: BU-06-30-04-032