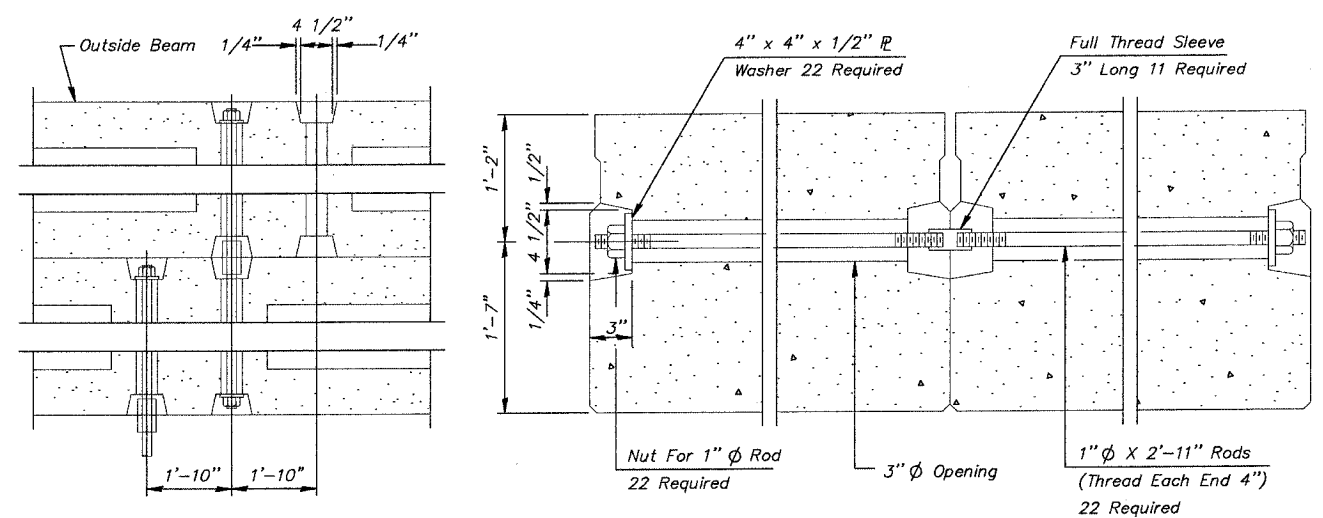
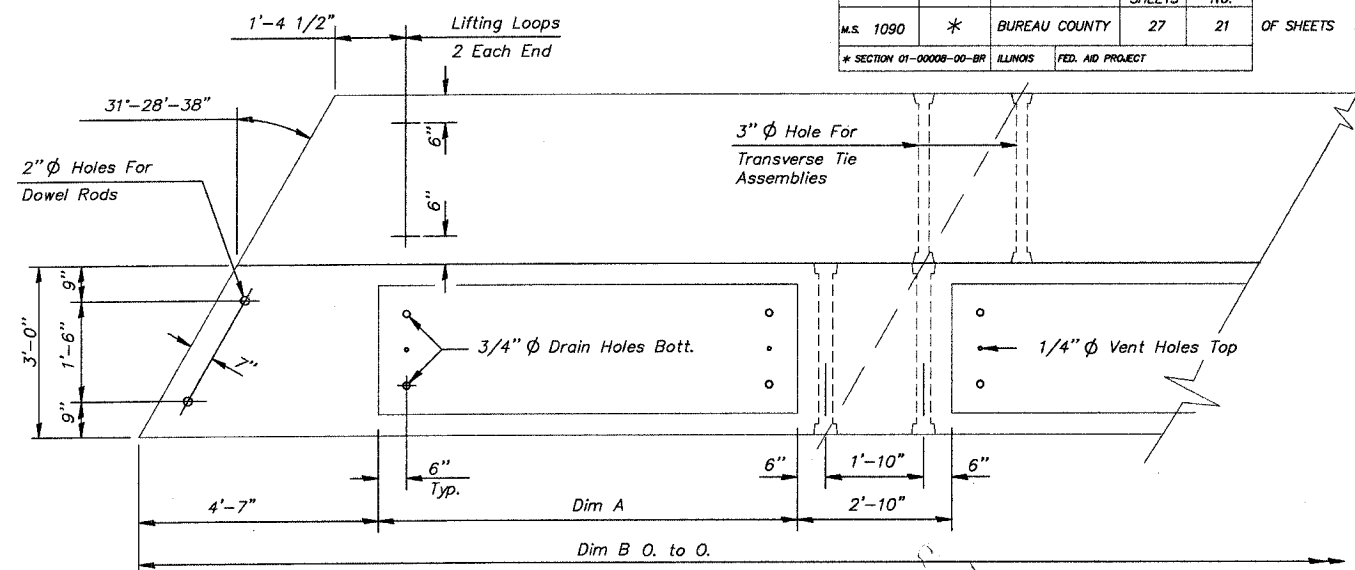


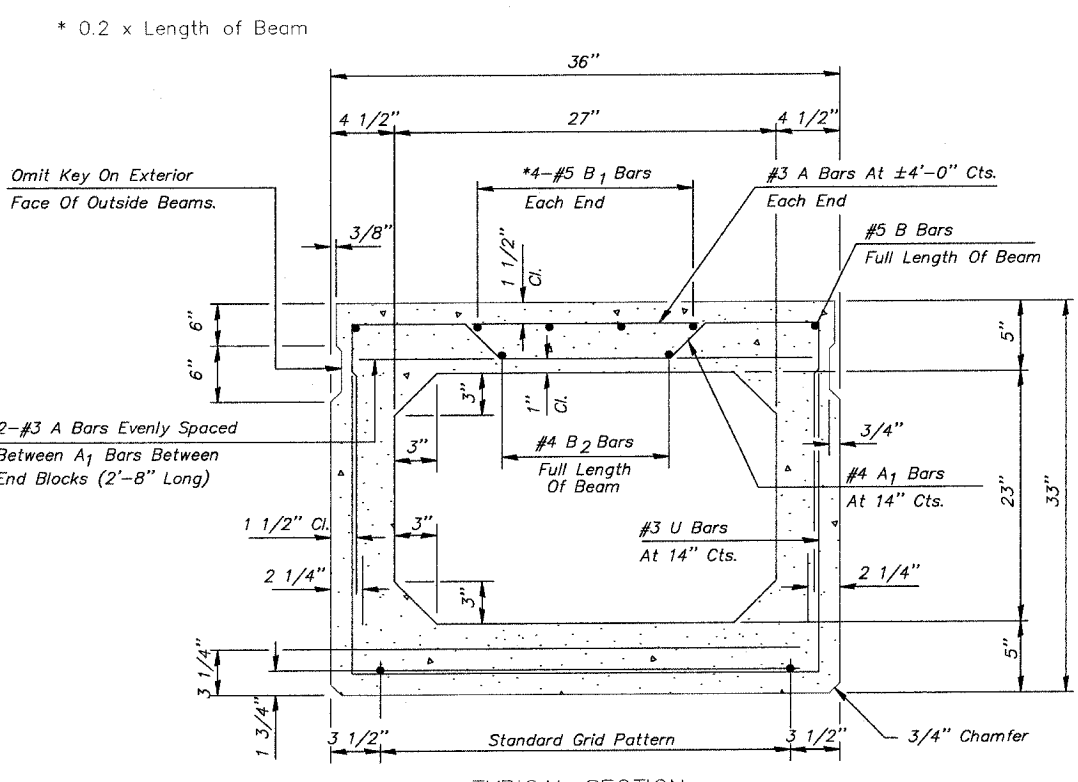
ROUTE NO.	SECTION	COUNTY	TOTAL SHEETS	SHEET NO.	SHEET NO. 303
M.S. 1090	*	BUREAU COUNTY	27	21	OF SHEETS 9
* SECTION 01-0008-00-BR		ILLINOIS	FED. AID PROJECT		



TYPICAL TRANSVERSE TIE ASSEMBLY



PLAN



TYPICAL SECTION

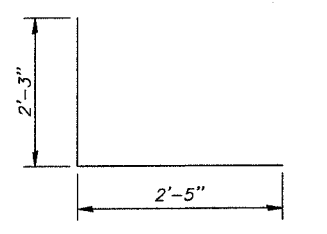
DIMENSION TABLE

	SPAN 1	SPAN 2	SPAN 3
DIM A	16'-9 9/16"	32'-10 7/16"	19'-9 9/16"
DIM B	43'-9 1/8"	75'-10 7/8"	49'-9 1/8"
DIM C	9"	12"	10"
D	32	59	37

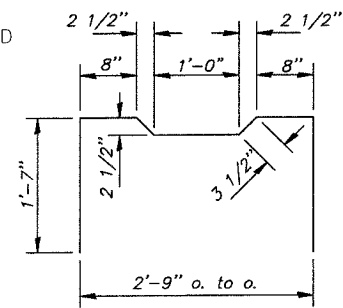
NOTE: SIDEWALK AND CURB CONNECTING BARS D<sub>1</sub> AND D<sub>2</sub> RESPECTIVELY SHALL BE CAST INTO THE APPROPRIATE PPC BEAMS. THE COST FOR D<sub>1</sub> AND D<sub>2</sub> BARS SHALL BE INCLUDED IN THE UNIT PRICE FOR PPC BEAMS.

NOTES

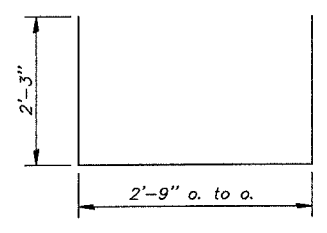
Prestressing steel shall be uncoated high strength, low relaxation 7-wire strand, Grade 270. The nominal diameter shall be 1/2 inch and the nominal cross-sectional area shall be 0.153 sq. in. Lifting loops shall be 3-1/2 inch diameter -270 ksi strands, as shown. The 1 inch diameter rods in the transverse tie assembly shall be tightened to a snug fit and the threads set. Pockets that receive transverse tie bar on outside shall be filled with grout after transverse tie assembly is in place. Non prestressing steel shall conform to AASHTO M-31, M-42 or M-53 Grade 60. The bearing seat surfaces shall be adjusted by shimming to assure firm and even bearing. Two 1/8 inch fabric adjusting shims of the dimensions of the Exterior Bearing Pad shall be provided for each bearing. Keyway surfaces shall be cleaned to remove form oil or other bond breaking material prior to shipment of the beams. Cleaning shall be done by sandblasting the keyway areas between top of the beam and the bottom edge of the key. Corrosion Inhibitor, as covered in the Special Provisions, shall be used in the concrete for precast prestressed concrete deck beams. Required Release Strength, f'ci, shall be 4,000 p.s.i.



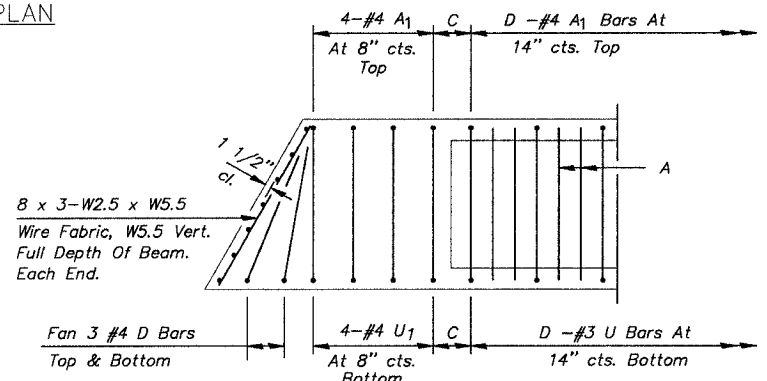
BAR D



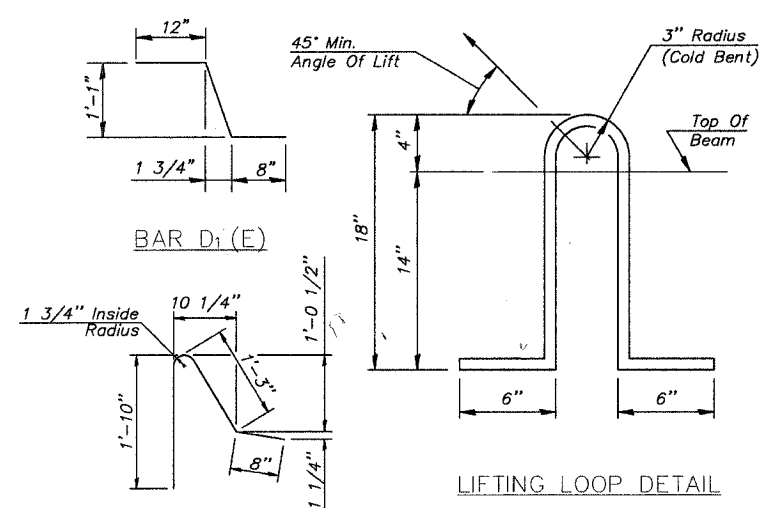
BAR A1



BARS U & U1



END PLAN



LIFTING LOOP DETAIL

D2 BAR

DESIGNED BY:	JTT
CHECKED BY:	
DRAWN BY:	CJP
CHECKED BY:	JTT

NOTE: Place Strands Symmetrically About C of Beam.  
 ENDSPANS: 8 - 1/2 inch diameter Low Relaxation Strands Each Strand Stressed To 28,900 lbs. 8 - Strands 1 3/4 inch Up  
 CENTERSPAN: 18 - 1/2 inch diameter Low Relaxation Strands Each Strand Stressed To 28,900 lbs. 10 - Strands 1 3/4 inch Up 6 - Strands 3 1/4 inch Up 2 - Strands 15 inch Up

**McCLURE ENGINEERING ASSOCIATES, INC.**  
 1138 COLUMBUS STREET OTTAWA, ILLINOIS 61350  
 PHONE (815) 433-2080 FAX (815) 433-5930  
 DESIGN FIRM LICENSE: ILLINOIS #184-000816  
 COPYRIGHT 2006 BY McCLURE ENGINEERING ASSOCIATES, INC.

REVISIONS		PRESTRESSED DECK BEAM DETAILS
NAME	DATE	

HIGH STREET OVER  
 BNSF RAILWAY  
 BUREAU COUNTY  
 SECTION 01-0008-00-BR  
 STATION 5+36.11  
 STRUCTURE NO. 006-6600