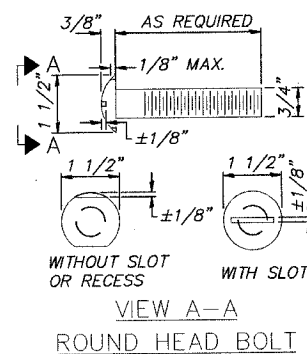
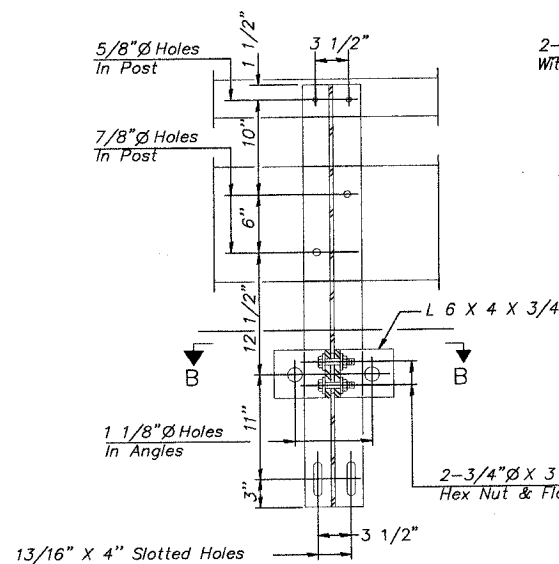


ROUTE NO.	SECTION	COUNTY	TOTAL SHEETS	SHEET NO.	SHEET NO. SOB
M.S. 1090	*	BUREAU COUNTY	27	26	OF SHEETS 9
* SECTION 01-00008-00-BR ILLINOIS FED. AID PROJECT					

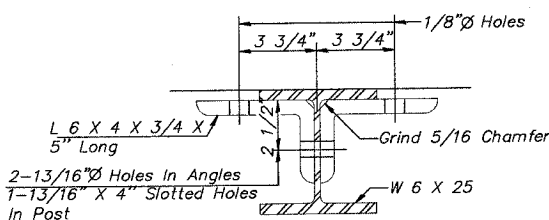
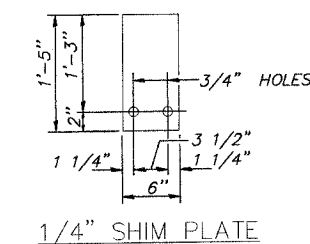


2-1/2"Ø X 6" Round Head Bolts  
(with Slot Or Approved Recess In Head.)  
With Locknut & Flat Washer  
5/8"Ø Holes In Hollow Structural  
Section May Be Drilled In The Field.

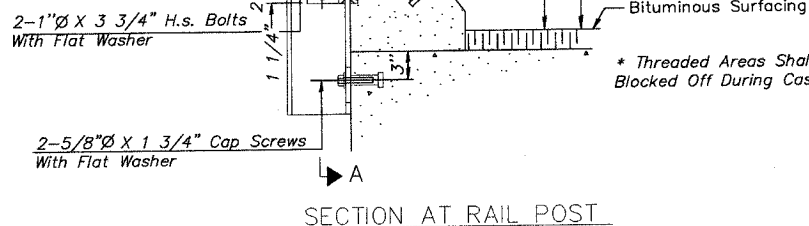
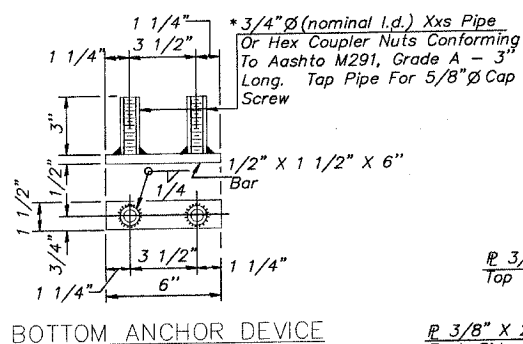
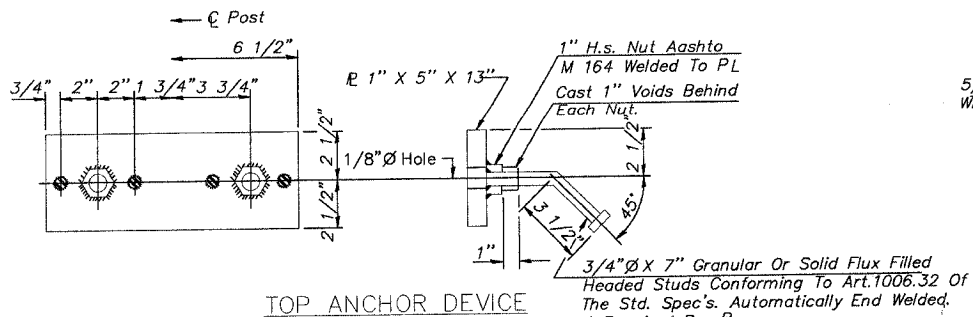
2-3/4"Ø X 6" Round Head Bolts  
(with Slot Or Approved Recess In Head.)  
With Locknut & Flat Washer  
7/8"Ø Holes In Hollow Structural  
Section May Be Drilled In The Field.



SECTION A-A

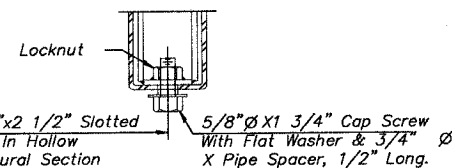
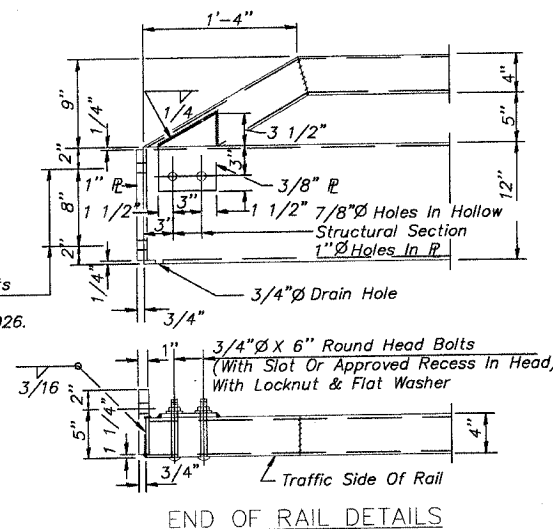


SECTION B-B

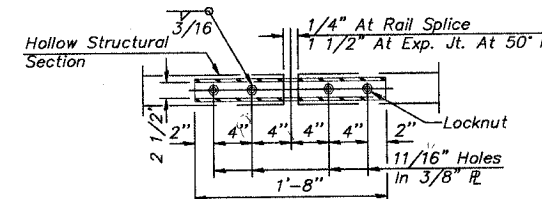


1 1/8"Ø Holes For 1"x4"Ø Round Head Bolts  
Provide 2 Flat Washers & Locknuts For  
Guard Rail Connection Shown On Std. 631026.

\* Threaded Areas Shall Be Plugged Or  
Blocked Off During Casting Of Beam.



RAIL SPLICE CONNECTION  
AT EXPANSION JT.



PLAN-BOTT. SPLICE PL  
TYPICAL

BILL OF MATERIAL

ITEM	UNIT	QUANTITY
STEEL RAILING TYPE T-1	FOOT	173

NOTES

Hollow structural sections shall conform to the requirements of ASTM designation A 500 Grade B Structural Steel Tubing and shall meet the longitudinal CVN requirements of 15 ft-lbs at 0° F.

All other steel shapes and plates shall conform to the requirements of AASHTO M 270 Grade 36 except posts and angles shall conform to AASHTO M 270, Grade 50.

Bolts, cap screws, and nuts shall conform to the requirements of ASTM designation A 307 except for high strength bolts, nuts and washers noted which shall conform to AASHTO M 164.

All bolts, nuts, cap screws, washers and lock washers shall be galvanized according to AASHTO M 232.

All posts, railing, rail splices, anchor devices and angles shall be galvanized after shop fabrication according to AASHTO M 111 and ASTM A 385. Galvanized rail shall not be painted.

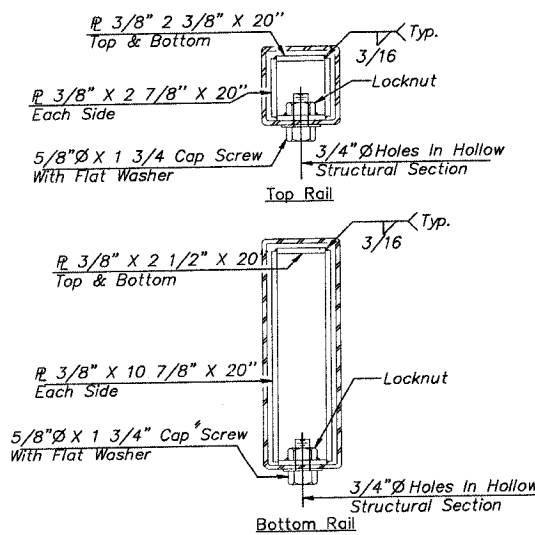
Railing shall be according to Section 509 of the Standard Specifications, except as noted, and will be paid for at the contract unit price per foot for STEEL RAILING, TYPE T-1.

All field drilled holes shall be coated with an approved zinc rich paint before erection.

The lower portion of the post frame in contact with concrete shall receive two coats of asphalt flange conforming to Section 1060.07 Type II or place 1/8" fabric bearing pad between the post and concrete.

The 3/4" Ø high strength bolts used to connect the 6 x 4 x 3/4 angles to the post shall be tightened according to Article 505.04(f)(2) of the Standard Specifications. The 1" Ø high strength bolts connecting the angles to the concrete shall be tightened to a snug fit and given an additional 1/8 turn. The 5/8" Ø cap screws in bottom of posts shall be tightened to a snug fit only.

For multi-span bridges, sufficient 1/4" x 6" x 1'-5" galvanized steel shims shall be provided to align rail between adjacent spans. Cost included with Steel Railing.



SECTIONS AT RAIL SPLICE

DESIGNED BY:	JTT
CHECKED BY:	
DRAWN BY:	CJP
CHECKED BY:	JTT

**McCLURE ENGINEERING ASSOCIATES, INC.**  
1138 COLUMBUS STREET OTTAWA, ILLINOIS 61350  
PHONE (815) 433-2080 FAX (815) 433-5830  
DESIGN FIRM LICENSE: ILLINOIS #184-000816  
COPYRIGHT 2006 BY McCLURE ENGINEERING ASSOCIATES, INC.

REVISIONS		TYPE T-1 STEEL RAILING DETAILS
NAME	DATE	
		HIGH STREET OVER BNSF RAILWAY BUREAU COUNTY SECTION 01-00008-00-BR STATION 5+36.11 STRUCTURE NO. 006-6600