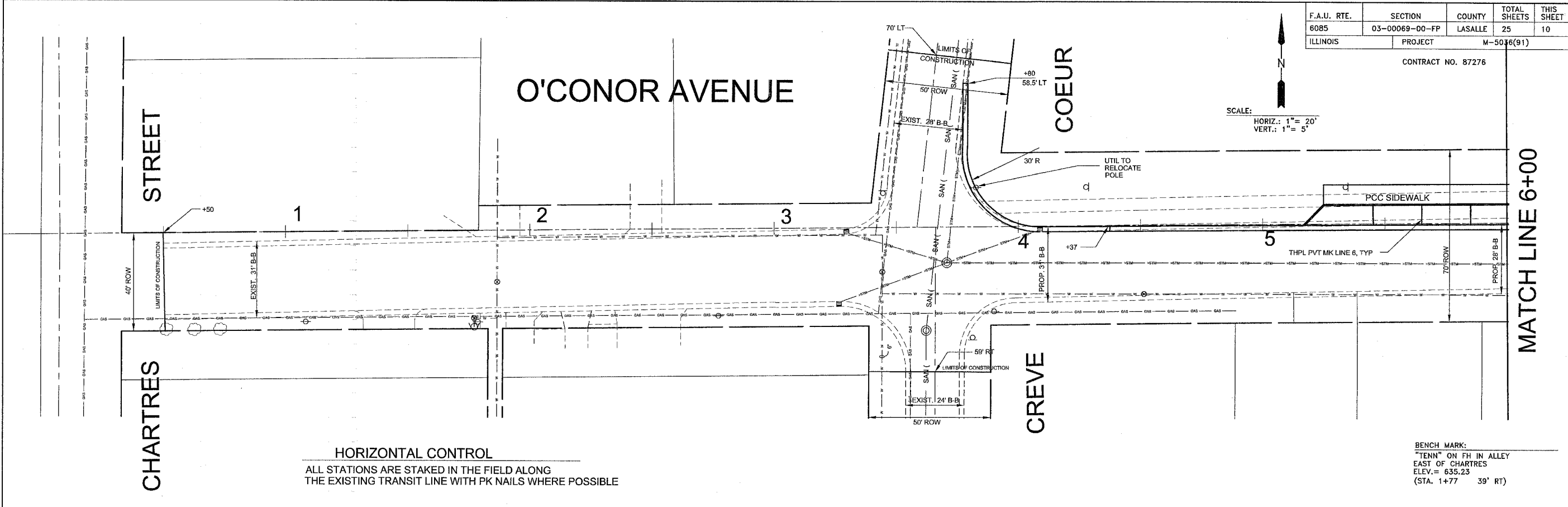


F.A.U. RTE.	SECTION	COUNTY	TOTAL SHEETS	THIS SHEET
6085	03-00069-00-FP	LASALLE	25	10
ILLINOIS PROJECT		M-5036(91)		

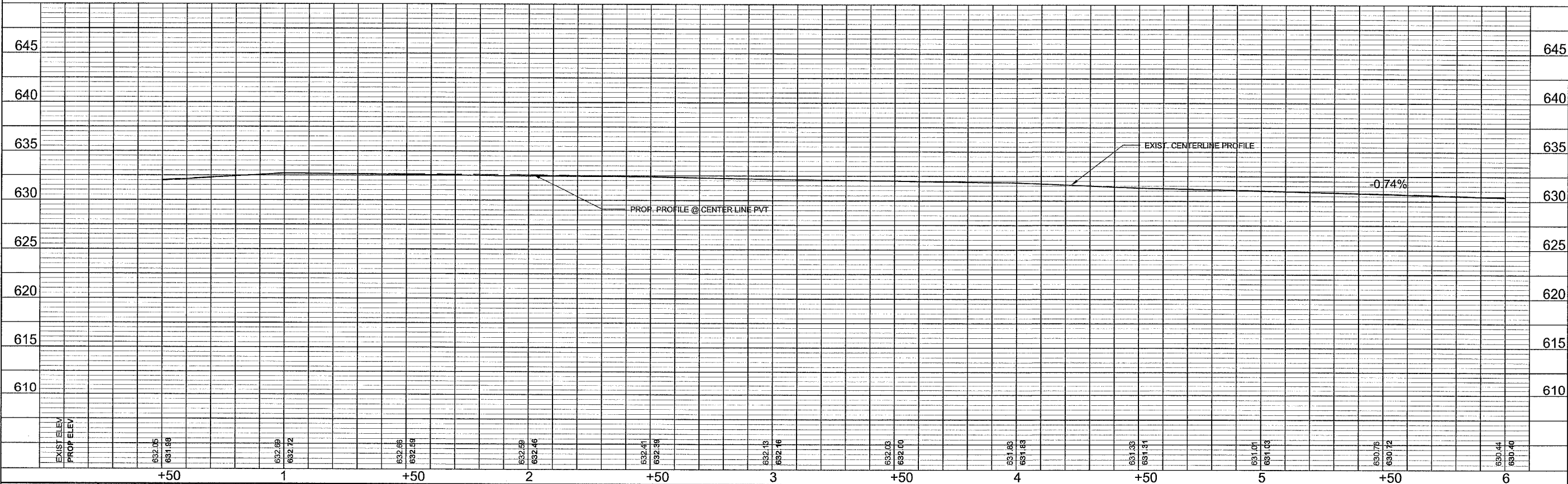
CONTRACT NO. 87276

SCALE:
HORIZ.: 1" = 20'
VERT.: 1" = 5'



HORIZONTAL CONTROL
ALL STATIONS ARE STAKED IN THE FIELD ALONG THE EXISTING TRANSIT LINE WITH PK NAILS WHERE POSSIBLE

BENCH MARK:
"TENN" ON FH IN ALLEY
EAST OF CHARTRES
ELEV. = 635.23
(STA. 1+77 39' RT)



DRAWN BY: PAB CHECKED BY: DEB	CAD: OCONORPG10 DATE: 2/2006	<table border="1"> <tr> <th colspan="2">REVISIONS</th> </tr> <tr> <th>DATE</th> <th>BY</th> </tr> <tr> <td> </td> <td> </td> </tr> </table>	REVISIONS		DATE	BY			CITY OF LASALLE	CITY OF LA SALLE O'CONOR AVENUE RECONSTRUCTION 03-00069-00-FP	PAVEMENT MARKING PLAN O'CONOR AVENUE STA. 0+50 TO STA. 6+00	SCALE: AS NOTED FILE NO.:	SHEET 10 OF 25
REVISIONS													
DATE	BY												