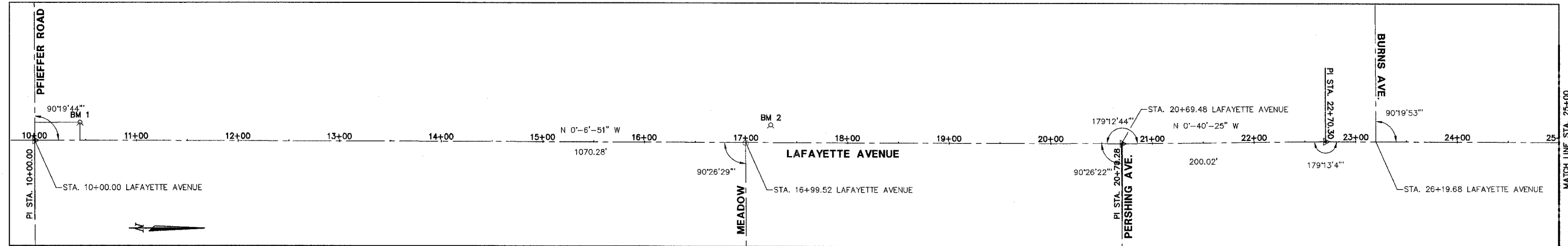
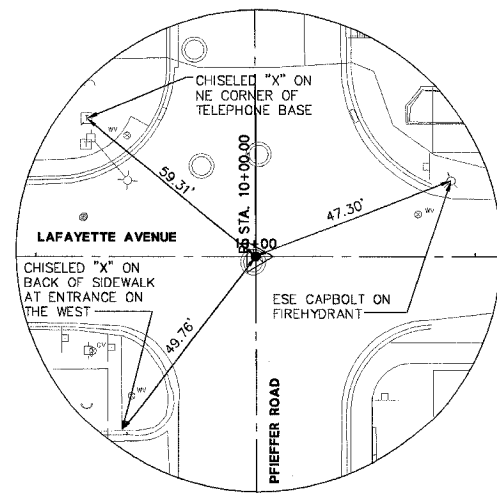


**BENCHMARKS**

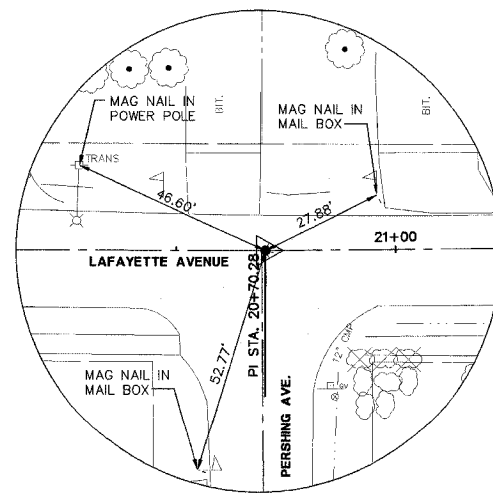
BENCHMARK	DESCRIPTION	ELEVATION	ALIGNMENT	STATION	OFFSET
BM 1	NORTH CAP BOLT OF FIRE HYDRANT AT NORTHWEST QUADRANT OF PFIFFER AND LAFAYETTE	621.79	LAFAYETTE AVE.	10+44.55	LT. 17.52
BM 2	EAST CAP BOLT OF FIRE HYDRANT AT NORTHWEST QUADRANT OF MEADOW AND LAFAYETTE	637.75	LAFAYETTE AVE.	17+24.16	LT. 17.04
BM 3	WEST CAP BOLT OF FIRE HYDRANT AT SOUTHEAST QUADRANT OF WHIPP AND LAFAYETTE	645.25	LAFAYETTE AVE.	25+80.41	RT. 22.58
BM 4	EAST CAP BOLT OF FIRE HYDRANT AT SOUTHWEST QUADRANT OF THE ALLEY AND LAFAYETTE	643.08	LAFAYETTE AVE.	34+31.16	LT. 22.11



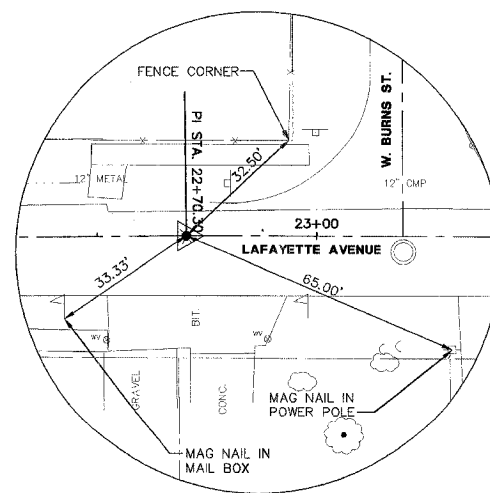
SCALES:  
1" = 50' HOR



P.I. STA. 10+00.00  
(LAFAYETTE)  
MAG NAIL  
N. 2404.86  
E. 4958.91



P.I. STA. 20+70.28  
(LAFAYETTE)  
MAG NAIL  
N. 3475.14  
E. 4961.04



P.I. STA. 22+70.30  
(LAFAYETTE)  
MAG NAIL  
N. 3675.14  
E. 4958.69

L:\BARTONVILLE\0805\1084-02-BM-LAFAYETTE.DWG 11.1.D.