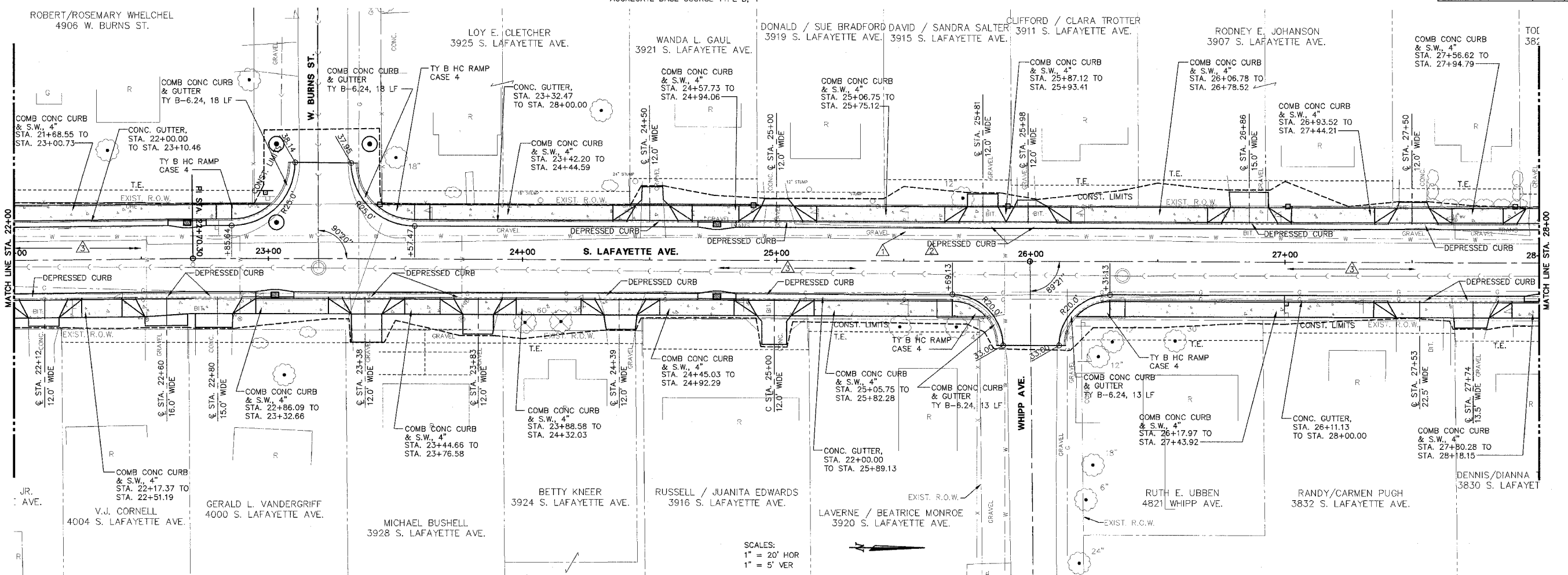
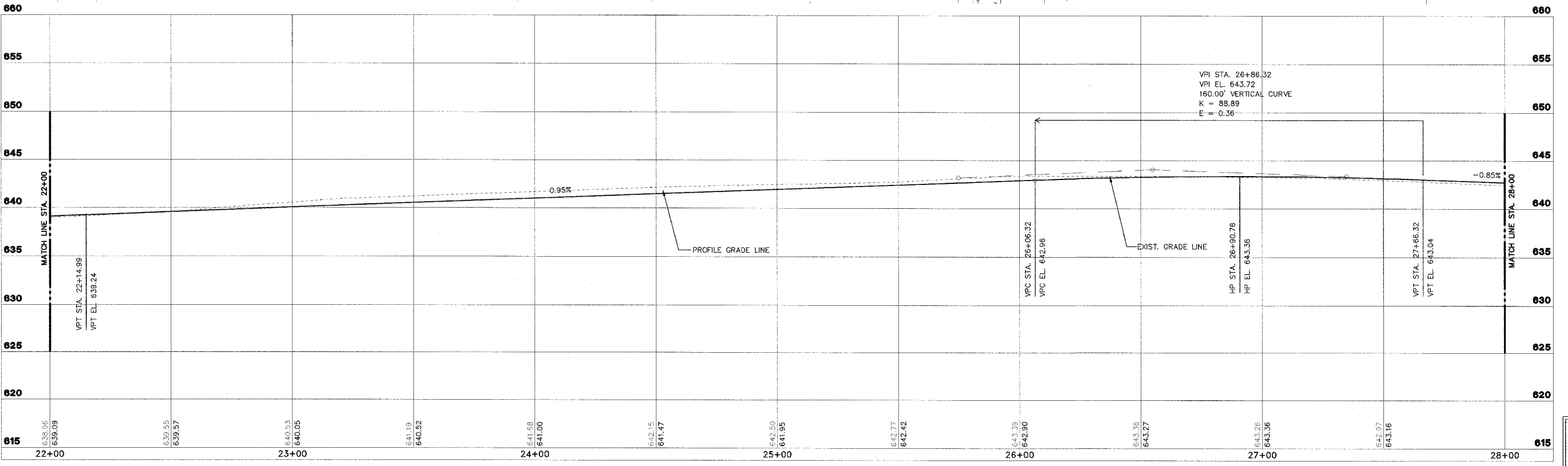


△ BITUMINOUS CONCRETE SURFACE COURSE MIX D, N 50, 2" LEVELING BINDER, 1" BASE COURSE WIDENING, 6" AGGREGATE BASE COURSE TYPE B, 4"
 △ BITUMINOUS CONCRETE SURFACE COURSE MIX D, N 50, 2" LEVELING BINDER, 1"
 △ BITUMINOUS CONCRETE SURFACE COURSE MIX D, N 50, 2" BITUMINOUS CONCRETE BINDER COURSE MIX D, N 50, 3" AGGREGATE BASE COURSE TYPE A, 8"

F.A. RTE.	SECTION	COUNTY	CONTRACT NO.
FAU 6579	02-00065-00-PV	PEORIA	89358
FED. RD. DIST. NO.	ILLINOIS PROJECT NO. M 503 102		



SCALES:
 1" = 20' HOR
 1" = 5' VER



STS CONSULTANTS 111 E. Jefferson Ave. Peoria, Illinois 61602 Ph: 309/878-5464 Fax: 309/878-5445 IL Design Firm Reg. No. 184-001518	LAFAYETTE AVE. BARTONVILLE IL.		PLAN AND PROFILE STA. 22+00 TO STA. 28+00		SURVEY DESIGN DRAWN	CHECKED APPROVED CSA	ISSUE DATE 01/08/06 PRELIM. DATE 00/00/00 PROJECT NO. BART0001

SHEET
26
 OF
83