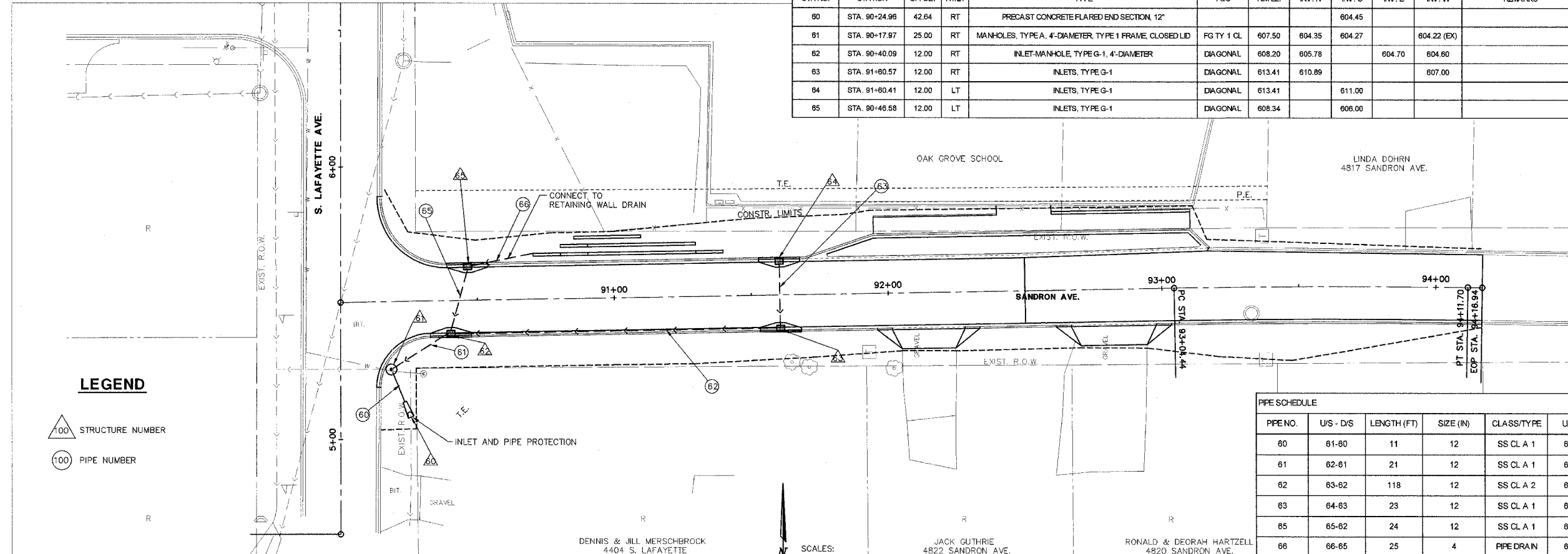


STR. NO.	STATION	OFFSET	RT/LT	TYPE	F&G	RIM EL.	INV. N	INV. S	INV. E	INV. W	REMARKS
60	STA. 90+24.96	42.64	RT	PRECAST CONCRETE FLARED END SECTION, 12"				604.45			
61	STA. 90+17.97	25.00	RT	MANHOLES, TYPE A, 4'-DIAMETER, TYPE 1 FRAME, CLOSED LID	FG TY 1 CL	607.50	604.35	604.27		604.22 (EX)	
62	STA. 90+40.09	12.00	RT	INLET-MANHOLE, TYPE G-1, 4'-DIAMETER	DIAGONAL	608.20	605.78		604.70	604.60	
63	STA. 91+60.57	12.00	RT	INLETS, TYPE G-1	DIAGONAL	613.41	610.89			607.00	
64	STA. 91+60.41	12.00	LT	INLETS, TYPE G-1	DIAGONAL	613.41		611.00			
65	STA. 90+46.58	12.00	LT	INLETS, TYPE G-1	DIAGONAL	608.34		606.00			



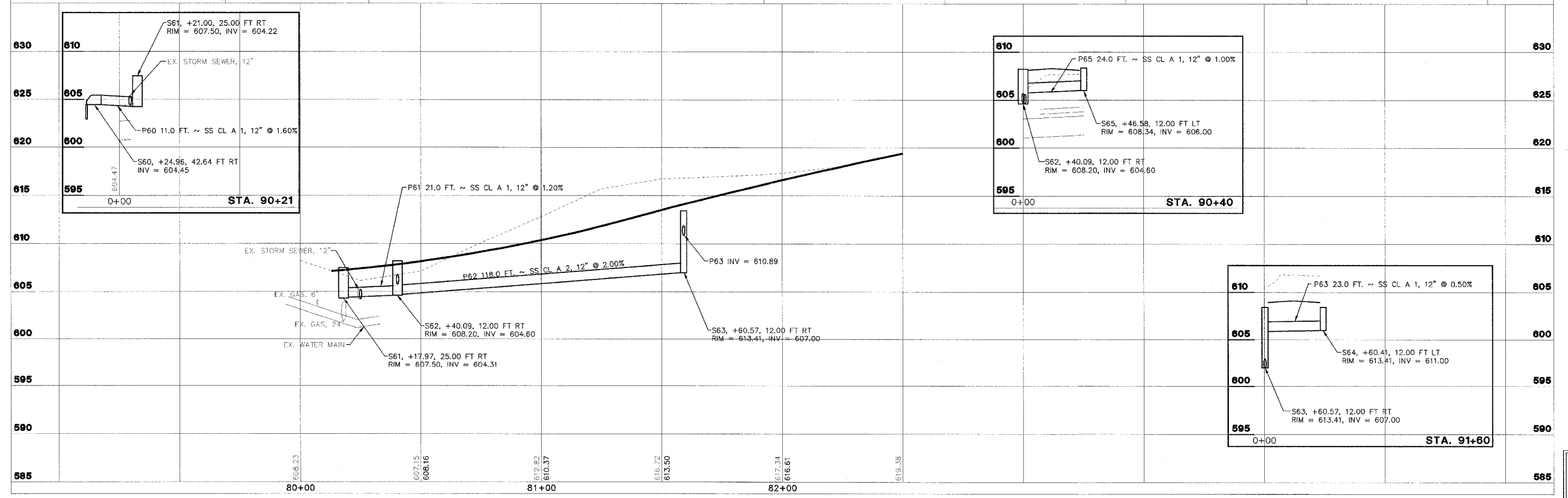
**LEGEND**

△ 100 STRUCTURE NUMBER

○ 100 PIPE NUMBER

PIPE NO.	US - DIS	LENGTH (FT)	SIZE (IN)	CLASS/TYPE	US INV	DIS INV	SLOPE	TRENCH BACKFILL (CU YD)
60	61-60	11	12	SS CL A 1	604.45	604.27	1.60%	-
61	62-61	21	12	SS CL A 1	604.60	604.35	1.20%	1.0
62	63-62	118	12	SS CL A 2	607.00	604.70	2.00%	38.0
63	64-63	23	12	SS CL A 1	611.00	610.89	0.50%	2.9
65	65-62	24	12	SS CL A 1	606.00	605.78	1.00%	3.6
66	66-65	25	4	PIPE DRAIN	608.50	606.00	10.00%	-

SCALES:  
1" = 20' HOR  
1" = 5' VER



SHEET  
**38**  
OF  
**83**