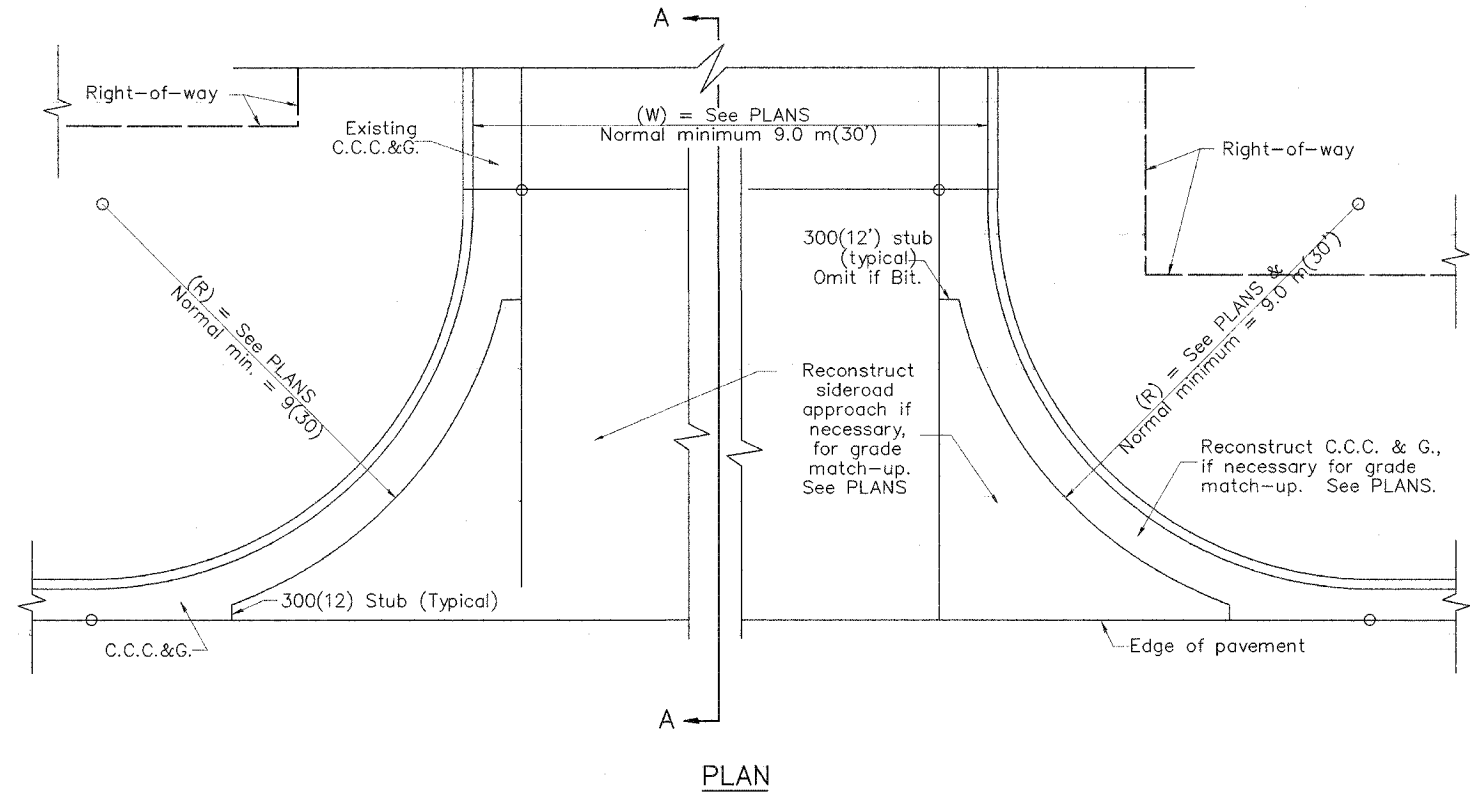
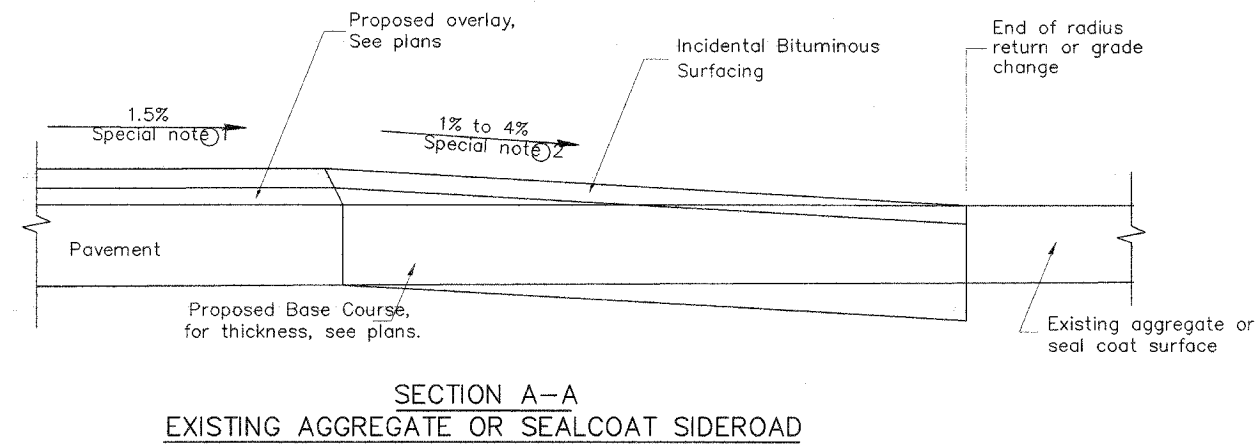
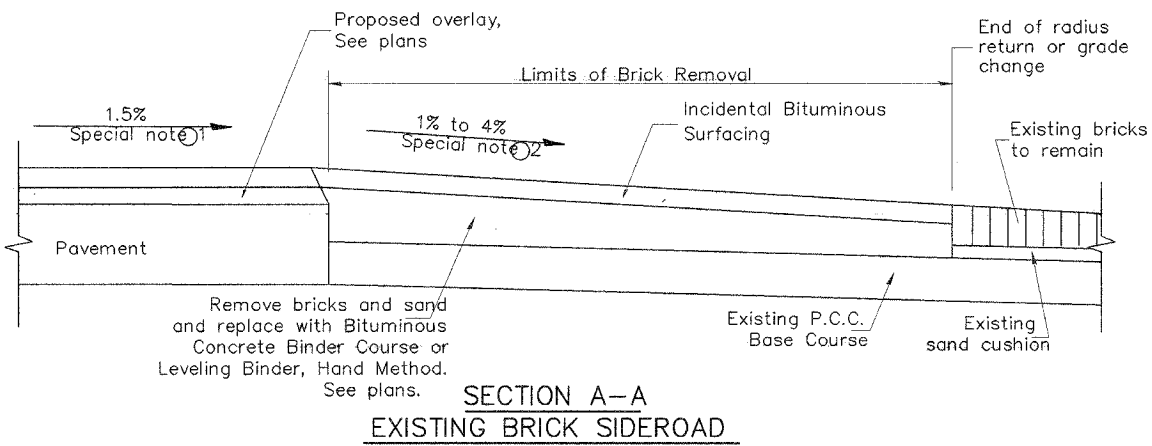
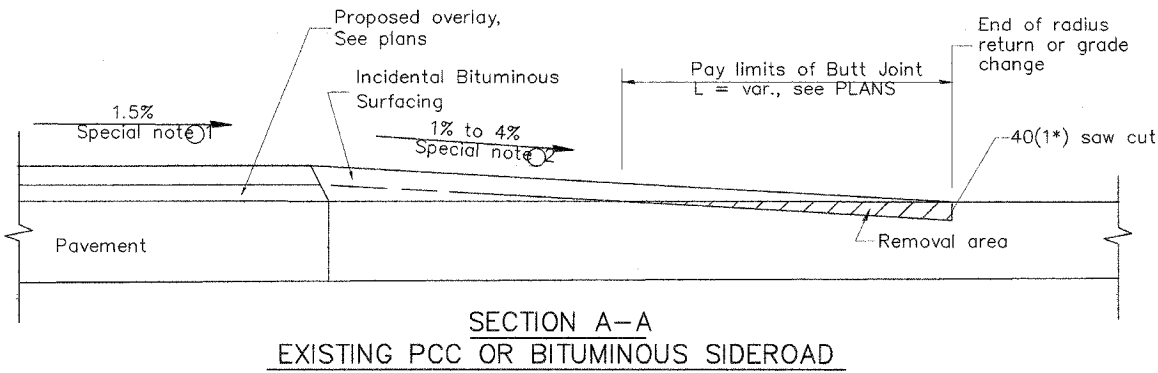


89358

1. DESIGNER SHOULD CONSULT THE BILE PROCEDURE MEMORANDUM 95-20 EFFECTIVE 07/01/91 ENTITLED "OR DESIGN POLICIES FOR REHABILITATING HIGHWAYS, STREETS AND BRIDGES FOR OTHER THAN FREEWAYS AND EXPRESSWAYS" Revised July 1995.  
 2. DESIGNER SHOULD REVIEW BDE PROCEDURE MEMORANDUM 94-12, DATED 7-1-94 ENTITLED "ACCESSIBILITY STANDARDS FOR THE DISABLED", IF SIDEWALKS ARE TO BE CONSTRUCTED INITIALLY.  
 3. STATE STANDARD 424001 SHOULD BE INCLUDED IN THE PLANS TO SUPPLEMENT THIS DRAWING, IF SIDEWALKS ARE TO BE CONSTRUCTED INITIALLY.



**SPECIAL NOTES**

- The mainline pavement cross-slope is 1.5% for tangent alignment. See Plans for cross-slope on super-elevated horizontal curves.
- The sideroad profile should drain away from the mainline at 1% to 4% for 15.0 m(50') to 30.0 m(100'), or as a minimum to the end of the radius return. When the sideroad is on the high side of a mainline super-elevated curve, - 2% maximum should be provided in order to minimize breakover at the pavement edge. See plans for sideroad profiles.

All dimensions are in millimeters (inches) unless otherwise noted.

ILLINOIS DEPARTMENT OF TRANSPORTATION  
DISTRICT CADD STANDARD

URBAN SIDEROADS FOR  
'3R' PROJECTS

CADD STD NO. 406501-D4  
SCALE: NOT DRAWN TO SCALE  
DATE \$\$\$DATE\$\$\$  
DRAWN BY CADD  
CHECKED BY: T. PICKERING

DATE	REVISIONS	BY
1-1-97	RENUM. C-105.01, NEW REVISION BOX	T.P.
7-1-97	REVISE DESIGNER NOTES	J.A.

406501-D4