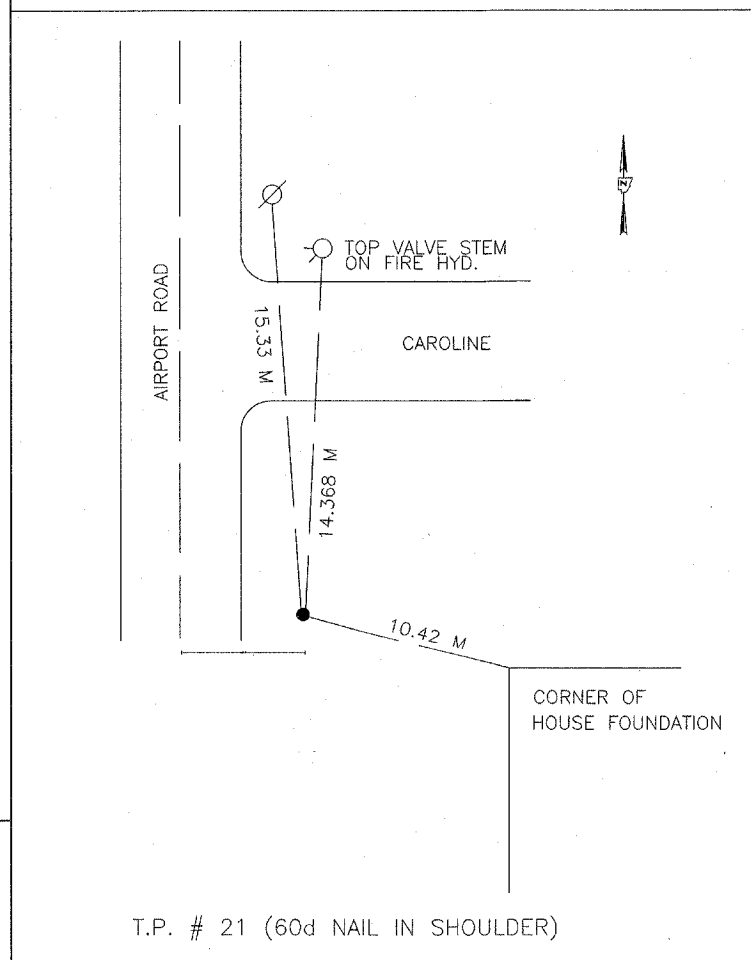
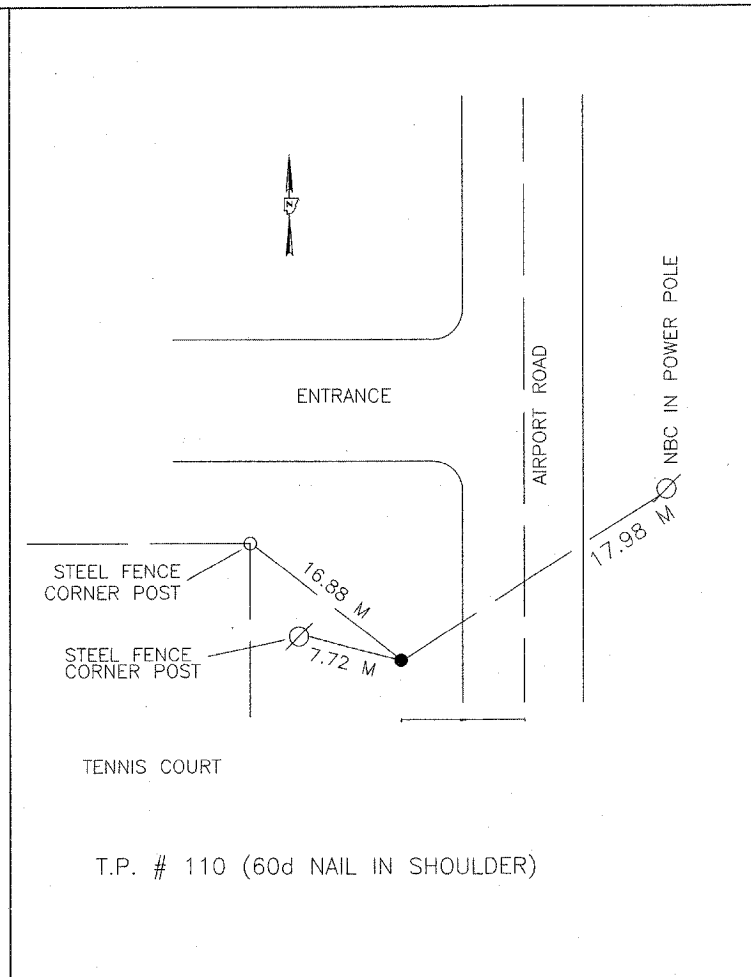


LIST OF STANDARDS

- 000001-04 SYMBOLS AND ABBREVIATIONS
- 280001-0 2 TEMPORARY EROSION CONTROL SYSTEM
- 420001-06 PAVEMENT JOINTS
- 420601-04 7.2 m PCC PAVEMENT
- 420701-0 1 PAVEMENT FABRICS
- 424001-04 SIDEWALK RAMPS ACCESSIBLE TO THE DISABLES
- 542201 REINFORCED CONCRETE END SECTION FOR PIPE CULVERT 375 MM THROUGH 900 MM SKEW WITH ROADWAY
- 542301 PRECAST REINFORCED CONCRETE FLARED END SECTION
- 602301-01 INLET TYPE A
- 602401-01 MANHOLE TYPE A
- 602601 PRECAST REINFORCED CONC. FLAT SLAB TOP
- 604001-02 FRAME AND LIDS TYPE I
- 604036-01 FRAMES, GRATES AND LIDS- TYPE 8 GRATE STANDARD
- 606001-02 CONC. CURB & COMB. CONC. CURB & GUTTER
- 606301-02 PC CONCRETE ISLANDS AND MEDIANS
- 606401 PAVED DITCH
- 701001-01 OFF-ROAD OPERATIONS, 2L, 2W, MORE THAN 4.5m (15') AWAY
- 701006-02 OFF-ROAD OPERATIONS, 2L, 2W, 4.5m (15') to 600mm (24") FROM PAVEMENT EDGE
- 664001-01 CHAIN LINK FENCE
- 666001 RIGHT OF WAY MARKERS
- 637001-02 CONCRETE BARRIER
- 66400 1-01 CHAIN LINK FENCE
- 665001-01 WOVEN WIRE FENCE
- 70 1501-03 URBAN LANE CLOSURE 2L, 2W UNDIVIDED
- 70 1701-04 URBAN LANE CLOSURE, MULTILANE INTERSECTION
- 702001-06 TRAFFIC CONTROL DEVICES
- 701011-01 OFF-ROAD MOVING OPERATIONS, 2L, 2W, DAY ONLY
- 701101-01 OFF-ROAD OPERATIONS, MULTILANE, 4.5m (15') to 600mm (24") FROM PAVEMENT EDGE
- 720001 SIGN PANEL MOUNTING DETAILS
- 7200 16-01 MAST ARM MOUNTED STREET NAME SIGNS
- 780001-01 TYPICAL PAVEMENT MARKINGS
- 78 1001-0 2 TYPICAL APPLICATIONS RAISED REFLECTIVE PAVEMENT MARKERS
- 805001 ELECTRICAL SERVICE INSTALLATION DETAILS
- 8 1400 1 CONCRETE HANDHOLES
- 814006 DOUBLE HANDHOLES
- 857001 STANDARD PHASE DESIGNATION DIAGRAMS AND PHASE SEQUENCES
- 87701 1-02 STEEL COMBINATION MAST ARM ASSEMBLY AND POLE
- 878001-04 CONCRETE FOUNDATION DETAILS
- 886006 TYPICAL LAYOUTS FOR DETECTION LOOPS
- 873001 *Traffic Signal Grounding*
- 701301-02 *LANE CLOSURE, 2L, 2W, SHORT TIME OPERATIONS*
- 701326-02 *LANE CLOSURE, 2L, 2W, PAVEMENT WIDENING, for SPEEDS ≥ 45MPH*
- 701426-0 2 *LANE CLOSURE, MULTILANE, Intermittent or Moving Operation, for Speeds ≥ 45MPH*
- 701601-04 *Urban Lane Closure, Multi-lane, 1W or 2W with Nontraversable Median*

*BLR 21-6 Typical Application of Traffic Control Devices for Construction on Rural Local Highways.*

PEORIA COUNTY HIGHWAY DEPT.  
AIRPORT ROAD  
LIST OF STANDARDS



ROUTE NO.	SECTION NO.	TOTAL SHEET NO.
FAU 6578	03-0009-1 I-FP	98
FAU 6679		2
FED. ROAD DIST. NO.	COUNTY	PROJECT
	PEORIA	M-5093 (104)
	ILLINOIS	

CONTRACT NO. 89369

