

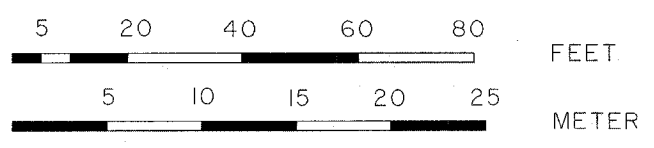
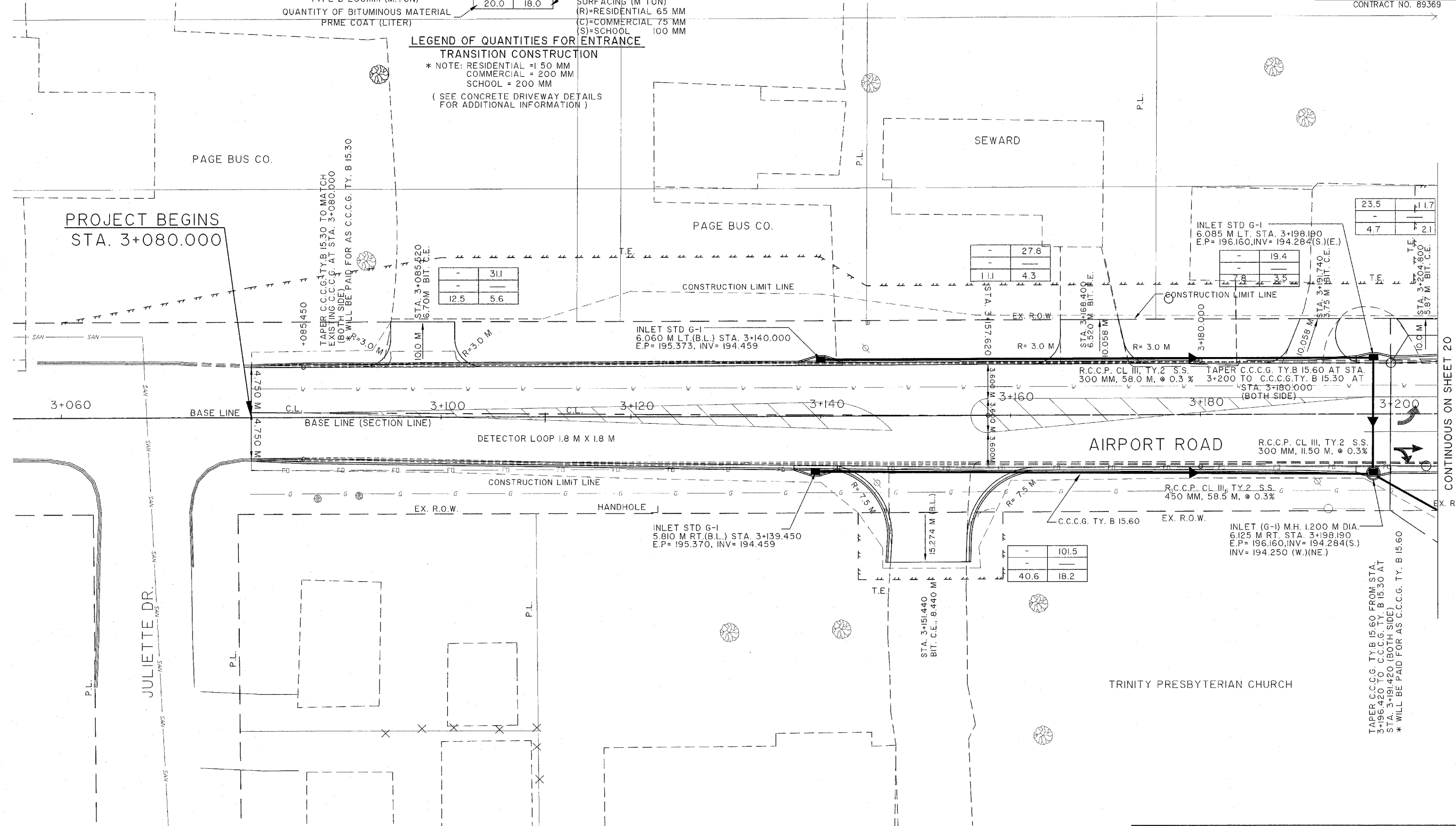
ROUTE NO. F.A.U. 6578 F.A.U. 6679	SECTION NO. 03-00019-1 I-FP	TOTAL SHEET NO. 98	SHEET NO. 19
FED. ROAD DIST. NO.	COUNTY PEORIA	PROJECT ILLINOIS M-5093 (104)	
CONTRACT NO. 89369			



QUANTITY OF P.C.C. DRIVEWAY PAVEMENT (SQ. METER)	4.5 (*)	18.0
QUANTITY OF AGG. SURF. CRSE. TYPE B 200mm (M.TON)	20.0	18.0
QUANTITY OF BITUMINOUS MATERIAL PRME COAT (LITER)	20.0	18.0

QUANTITY OF AGG. BASE CRSE. TYPE B, 200mm ( SQ.M.)	4.5 (*)	18.0
QUANTITY OF INCIDENTAL BIT. SURFACING (M TON)	(R)=RESIDENTIAL 65 MM	(C)=COMMERCIAL 75 MM
	(S)=SCHOOL 100 MM	

**LEGEND OF QUANTITIES FOR ENTRANCE TRANSITION CONSTRUCTION**  
 \* NOTE: RESIDENTIAL = 150 MM  
 COMMERCIAL = 200 MM  
 SCHOOL = 200 MM  
 ( SEE CONCRETE DRIVEWAY DETAILS FOR ADDITIONAL INFORMATION )



PEORIA COUNTY HIGHWAY DEPARTMENT  
 CONSTRUCTION DETAILS  
 STA. 3+080.000 TO STA. 3+205.407  
 AIRPORT ROAD SEC. 03-00019-1 I-FP

CONTINUOUS ON SHEET 20  
 STA. 3+205.407