

ROUTE NO.	SECTION NO.	TOTAL SHEET NO.	SHEET NO.
F.A.U. 6578 F.A.U. 6679	03-00019-1 I-FP	98	22
FED. ROAD DIST. NO.	COUNTY	PROJECT	
	PEORIA	M-5093 (104)	
	ILLINOIS		

CONTRACT NO. 89369

SCALE 1:200

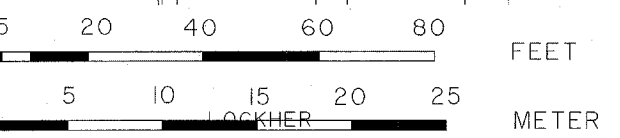
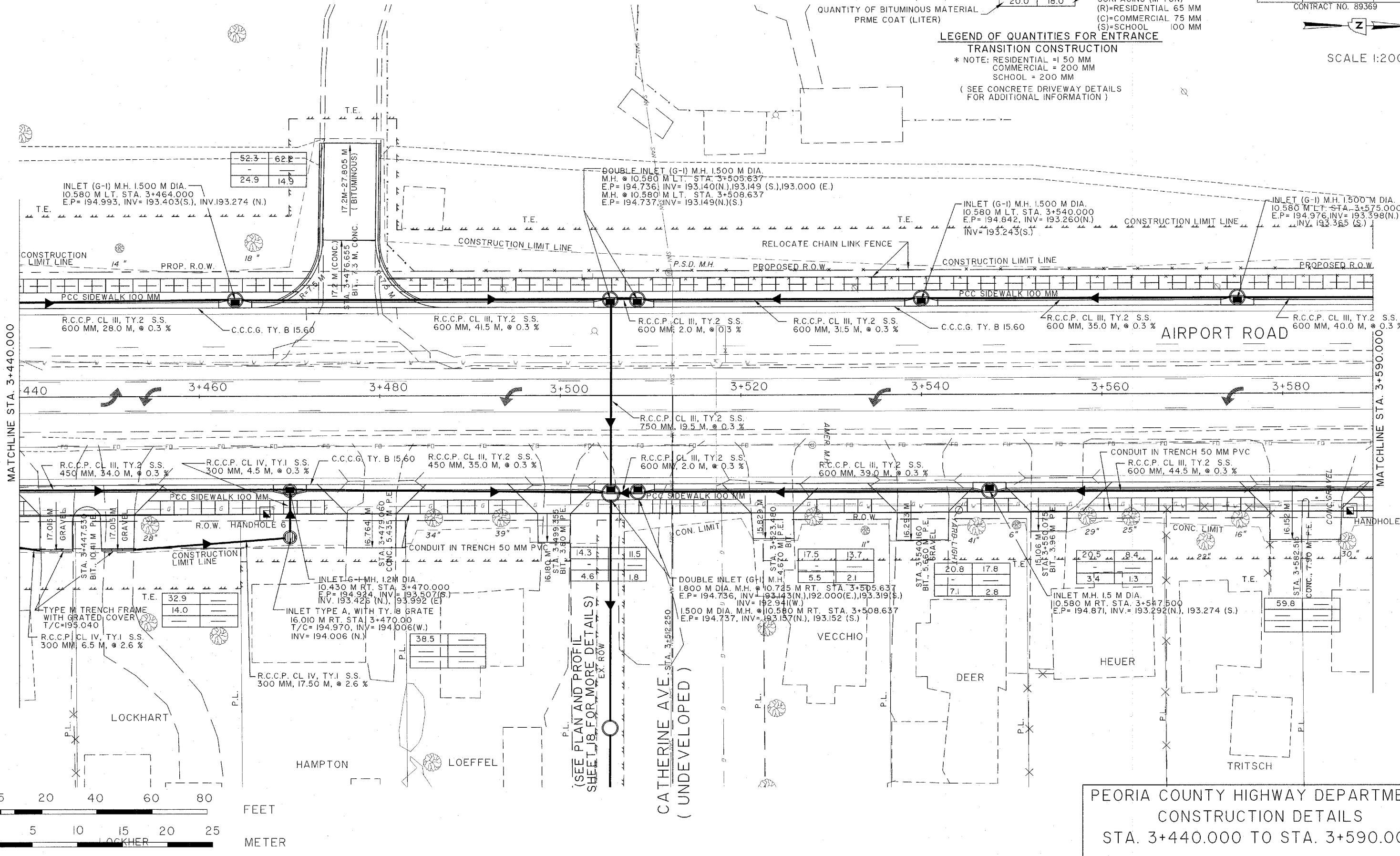
QUANTITY OF P.C.C. DRIVEWAY PAVEMENT (SQ. METER)	4.5 (*)	18.0
QUANTITY OF AGG. SURF. CRSE. TYPE B 200mm (M.TON)	20.0	—
QUANTITY OF BITUMINOUS MATERIAL PRME COAT (LITER)	20.0	18.0
QUANTITY OF AGG. BASE CRSE. TYPE B, 200mm (SQ.M.)	—	—
QUANTITY OF INCIDENTAL BIT. SURFACING (M TON)	—	—
(R)=RESIDENTIAL 65 MM	—	—
(C)=COMMERCIAL 75 MM	—	—
(S)=SCHOOL 100 MM	—	—

LEGEND OF QUANTITIES FOR ENTRANCE

TRANSITION CONSTRUCTION

* NOTE: RESIDENTIAL = 150 MM
COMMERCIAL = 200 MM
SCHOOL = 200 MM

(SEE CONCRETE DRIVEWAY DETAILS FOR ADDITIONAL INFORMATION)



(SEE PLAN AND PROFILE SHEET 18 FOR MORE DETAILS)

CATHERINE AVE. STA. 3+512.250 (UNDEVELOPED)

PEORIA COUNTY HIGHWAY DEPARTMENT
CONSTRUCTION DETAILS
STA. 3+440.000 TO STA. 3+590.000
AIRPORT ROAD SEC. 03-00019-1 I-FP