

ROUTE NO.	SECTION NO.	TOTAL SHEET NO.
F.A.U. 6578 F.A.U. 6679	03-00019-1 I-FP	98 24
FED. ROAD DIST. NO.	COUNTY	PROJECT
	PEORIA	M-5093 (04)
	ILLINOIS	



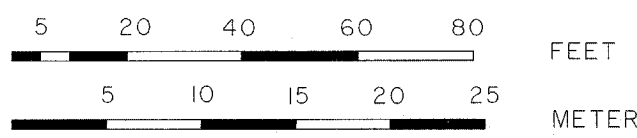
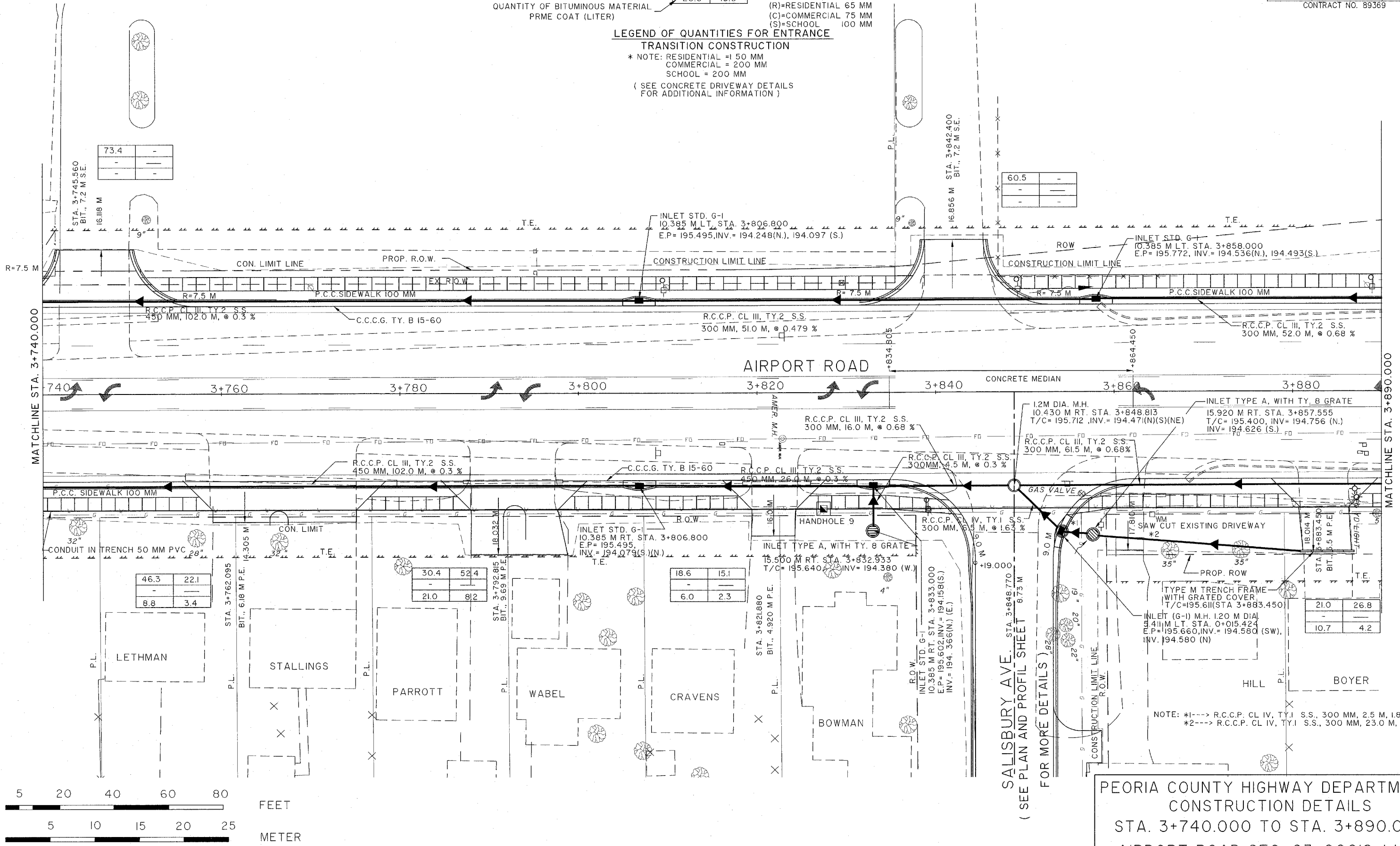
SCALE 1:200

CONTRACT NO. 89369

QUANTITY OF P.C.C. DRIVEWAY PAVEMENT (SQ. METER)	4.5 (*)	18.0
QUANTITY OF AGG. SURF. CRSE. TYPE B 200mm (M.TON)	20.0	
QUANTITY OF BITUMINOUS MATERIAL PRME COAT (LITER)	20.0	18.0
QUANTITY OF AGG. BASE CRSE. TYPE B, 200mm (SQ.M.)		
QUANTITY OF INCIDENTAL BIT. SURFACING (M TON)		
(R)=RESIDENTIAL 65 MM		
(C)=COMMERCIAL 75 MM		
(S)=SCHOOL 100 MM		

**LEGEND OF QUANTITIES FOR ENTRANCE TRANSITION CONSTRUCTION**

\* NOTE: RESIDENTIAL = 1 50 MM  
COMMERCIAL = 200 MM  
SCHOOL = 200 MM  
( SEE CONCRETE DRIVEWAY DETAILS FOR ADDITIONAL INFORMATION )



PEORIA COUNTY HIGHWAY DEPARTMENT  
CONSTRUCTION DETAILS  
STA. 3+740.000 TO STA. 3+890.000  
AIRPORT ROAD SEC. 03-00019-1 I-FP

NOTE: \*1---> R.C.C.P. CL IV, TY.1 S.S., 300 MM, 2.5 M, 1.8 %  
\*2---> R.C.C.P. CL IV, TY.1 S.S., 300 MM, 23.0 M, 2.66 %