

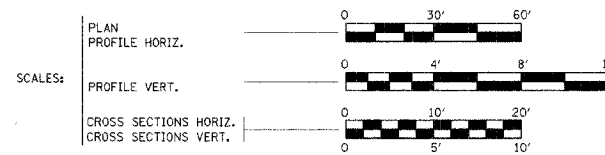
# STATE OF ILLINOIS DEPARTMENT OF TRANSPORTATION PLANS FOR PROPOSED BRIDGE REPLACEMENT

ROUTE NO.	SECTION	COUNTY	DISTRICT	SHEET NO.
CH 2	*	FULTON	14	1
FED. ROAD DIST. NO. 7		ILLINOIS	FED. AID PROJECT	BR-5-452(115)

\*04-00130-00-BR  
CONTRACT #89373

## INDEX OF SHEETS

SHEET NO.	DESCRIPTION
1	COVER SHEET
2	SUMMARY OF QUANTITIES & TYPICAL CROSS SECTIONS
3	SCHEDULE OF QUANTITIES
4	PLAN & PROFILE
5-11	BRIDGE PLANS
12	TEMPORARY EROSION CONTROL PLAN
13	CROSS SECTIONS
14	BORING LOGS



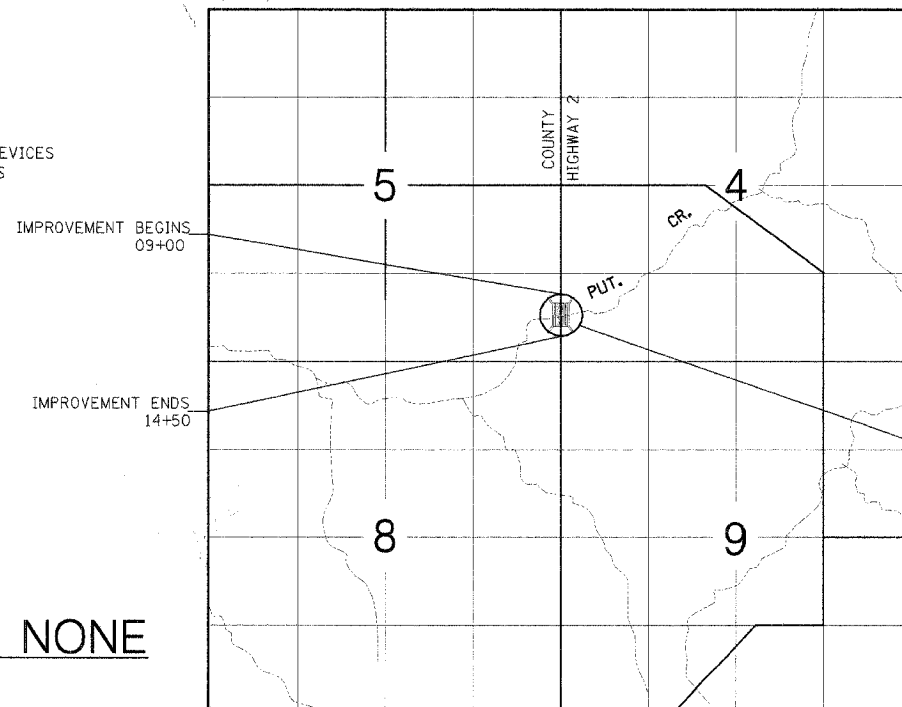
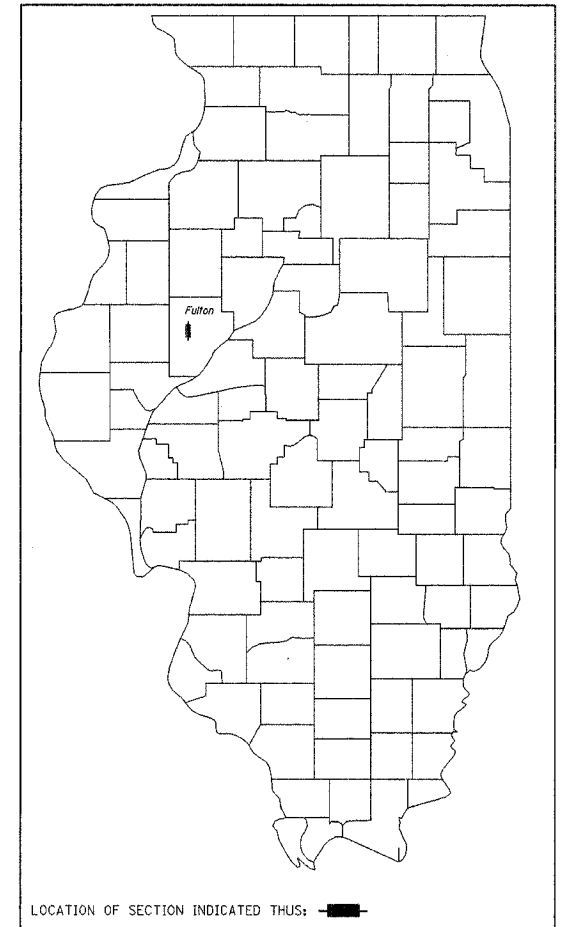
**FULTON COUNTY  
SECTION 04-00130-00-BR  
BRS-0452(115)  
FAS 452**

## COUNTY HIGHWAY 2 BRIDGE REPLACEMENT AND REHABILITATION PROGRAM

R 2 E, 4th P.M.

### ILLINOIS DEPT. OF TRANSPORTATION STANDARD DRAWINGS

STANDARD NO.	DESCRIPTION
000001-04	STANDARD SYMBOLS, ABBREVIATIONS AND PATTERNS
280001-02	TEMPORARY EROSION CONTROL SYSTEMS
515001-02	NAME PLATE FOR BRIDGES
701006-02	OFF ROAD OPERATIONS, 2L, 2W, 15' TO 24" FROM PAVEMENT EDGE
702001-06	TRAFFIC CONTROL DEVICES
631026-02	TRAFFIC BARRIER TERMINAL TYPE 5 & 5A
BLR 21-6	TYPICAL APPLICATION OF TRAFFIC CONTROL DEVICES FOR CONSTRUCTION OF RURAL LOCAL HIGHWAYS
BLR 23-1	TRAFFIC BARRIER TERMINAL TYPE 1



PROPOSED STRUCTURE STA. 11+88  
FIVE SPAN PRECAST PRESTRESSED  
CONC. BRIDGE 302.27' BK. TO BK ABUTMENTS  
SKEW RT. 30°, 28'-0" OUT TO OUT OF DECK  
OLD STRUCTURE NO. 029-3013  
NEW STRUCTURE NO. 029-3213

APPROVED 1-3 20-06  
*William C. Hub*  
COUNTY ENGINEER

APPROVED \_\_\_\_\_ 20-\_\_\_\_  
ROAD COMMISSIONER

PASSED 2-14 20-06  
*John Laballe*  
DISTRICT FOUR ENGINEER OF  
LOCAL ROADS & STREETS

Releasing For Bid Based on Limited Review  
FEB 14 20-06  
*Joseph E. Curran*  
DEPUTY DIRECTOR OF HIGHWAYS,  
REGION THREE ENGINEER  
STATE OF ILLINOIS  
DEPARTMENT OF TRANSPORTATION

**FRAUENHÖFFER**  
Frauenhoffer and Associates, P.C. Consulting Engineers  
3002 Crossing Court Champaign, Il. 61822 217-351-6268



*Keith E. Brandau* 12/15/05  
KEITH E. BRANDAU  
Illinois Licensed Professional Engineer Number 44096  
License Expires 11/30/07

COMMITMENTS - NONE

LOCATION MAP

ADT = 500 (CURRENT), <500 (DESIGN)  
FUNCTIONAL CLASS = MAJOR COLLECTOR

NET LENGTH OF SECTION = 550.00 FEET = 0.104 MILES

CAT. #033028-00  
C-94-089-05

FOR JOINT UTILITY INFORMATION  
CALL TOLL FREE 1-800-892-0123