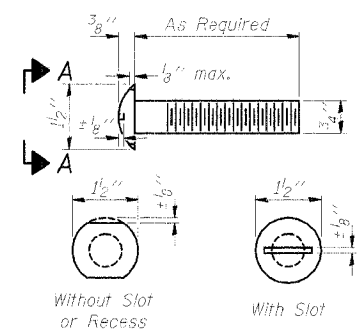
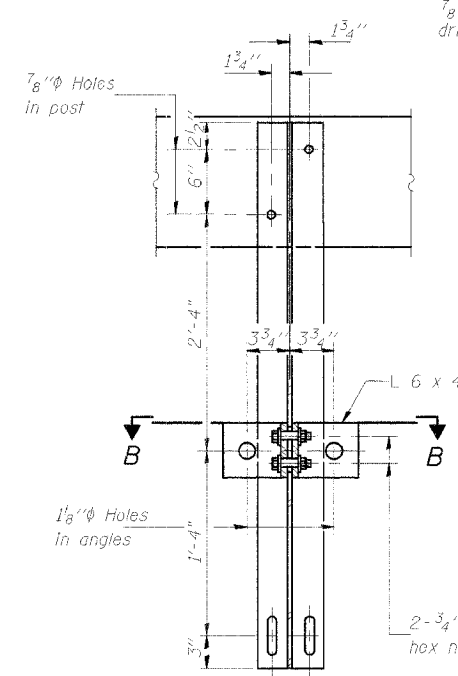


| | | | | |
|-----------------------|---|------------|-------------------|----------------|
| CH 2 | * | Fulton | 14 | 11 |
| REV. ROAD DEVL. NO. 7 | | ILL. HOUSE | PROJ. AND PROJECT | 04-00130-00-BR |

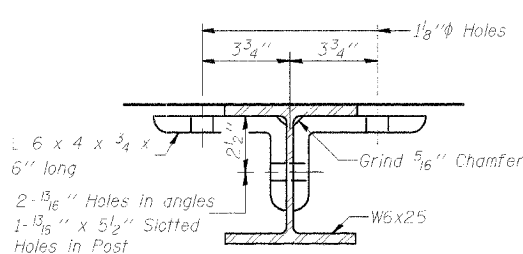
CONTRACT #89373



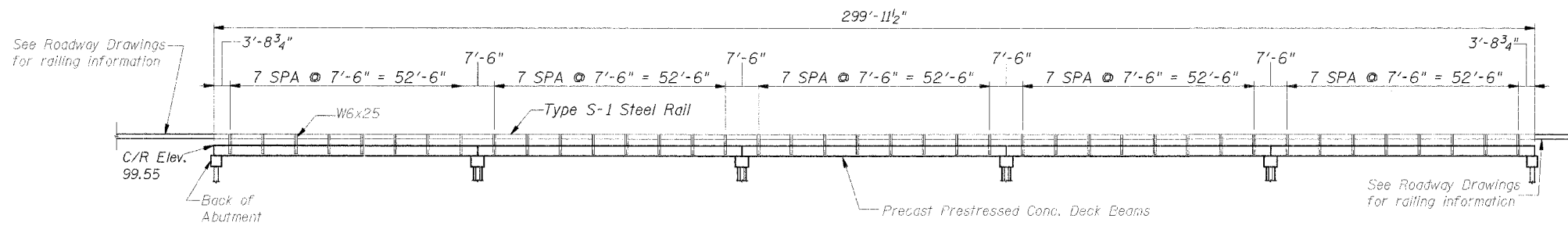
VIEW A-A
ROUND HEAD BOLT



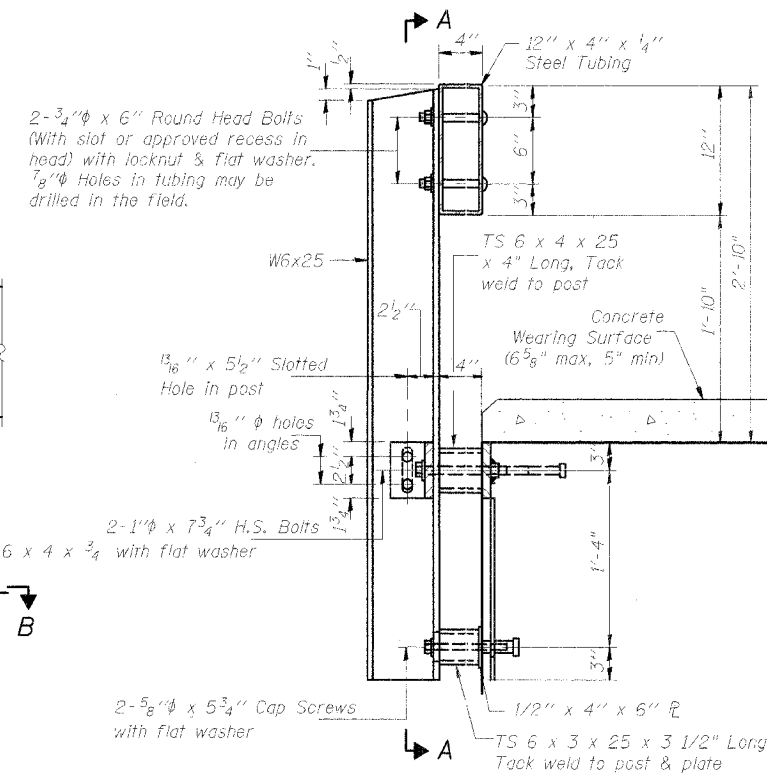
SECTION A-A



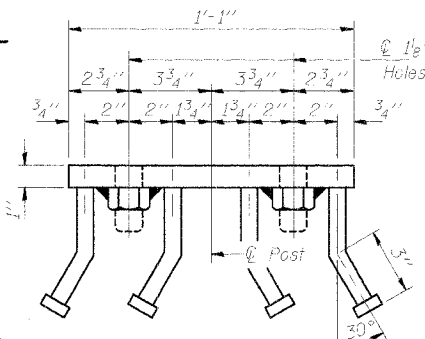
SECTION B-B



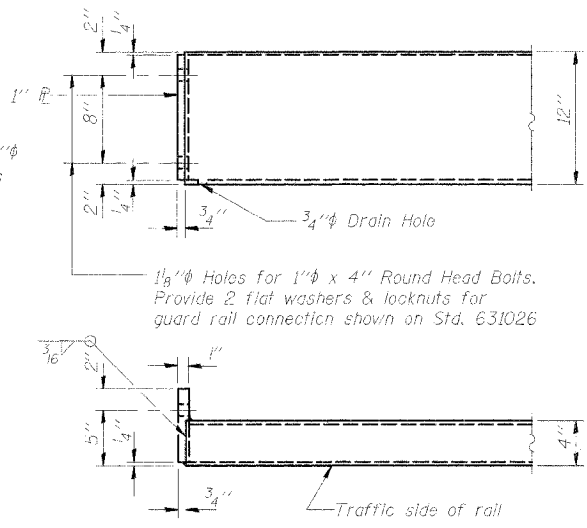
STEEL RAILING ELEVATION



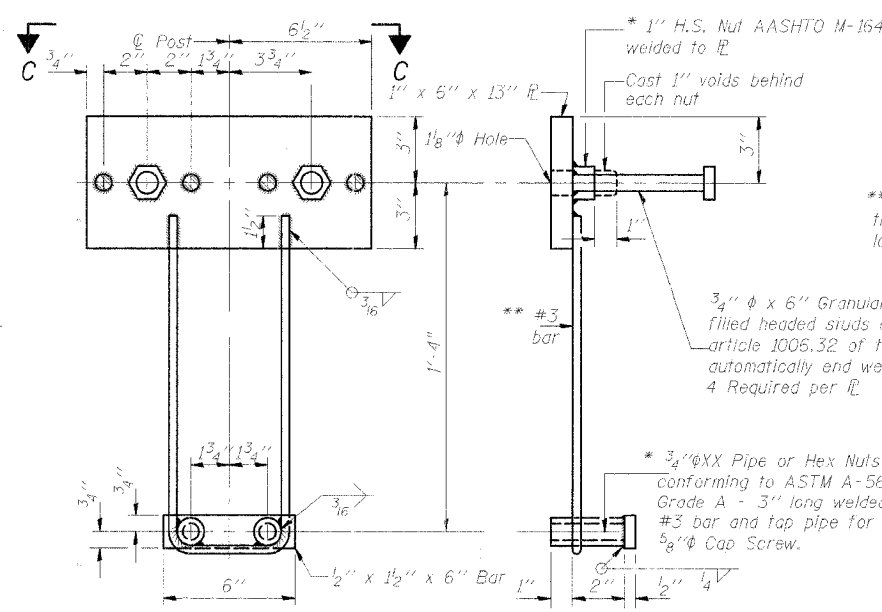
SECTION AT RAIL POST



VIEW C-C

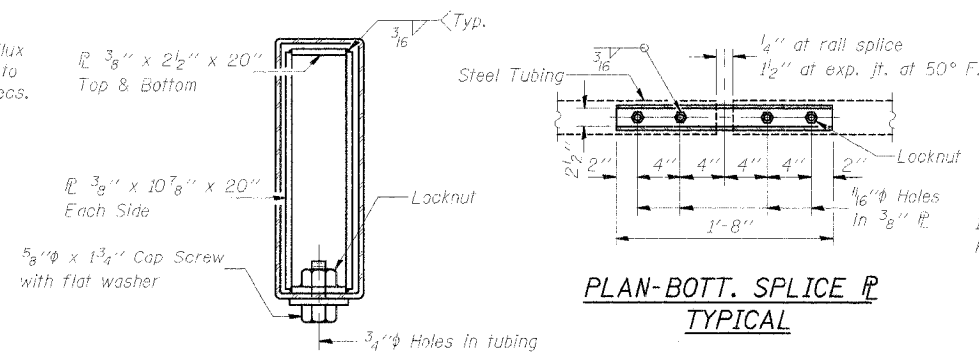


END OF RAIL DETAILS



ANCHOR DEVICE

** Whenever the lower insert assemblies interfere with strand locations, the #3 bars shall be cut and adjusted in order to allow raising or lowering of the lower inserts. Maximum adjustment not to exceed 1/2 inch.



SECTIONS AT RAIL SPLICE

NOTES

Hollow structural steel tubing shall conform to the requirements of ASTM designation A-500 Grade B Structural Steel Tubing and shall meet the longitudinal CVN requirements of 15 ft-lbs at 0° F.
 All other steel shapes and plates shall conform to the requirements of AASHTO M-270 Grade 36 except posts and angles shall conform to AASHTO M-270, Grade 50.
 Bolts, cap screws, and nuts shall conform to the requirement of ASTM designation A-307 except for high strength bolts, nuts and washers noted which shall conform to AASHTO M-164.
 All bolts, nuts, cap screws, washers and lock washers shall be galvanized in accordance with AASHTO M-252.
 All posts, railing, rail splices, anchor devices and angles shall be galvanized after shop fabrication in accordance with AASHTO M-111 and ASTM A-385. Galvanized rail shall not be painted.
 Railing shall be in accordance with Section 509 of the Standard Specifications, except as noted, and will be paid for at the contract unit price per foot for STEEL RAILING, TYPE S-1.
 All field drilled holes shall be coated with an approved zinc rich paint before erection.
 The lower portion of the post flange in contact with concrete shall receive two coats of asphalt paint conforming to Section 1060.07 Type II or place 1/8 inch fabric bearing pad between the post and concrete.
 The 3/4 inch high strength bolts used to connect the 6 x 4 x 3/4 angles to the post shall be tightened in accordance with Article 505.04(f)(3) of the Standard Specifications. The 1 inch high strength bolts connecting the angles to the concrete shall be tightened to a snug fit and given an additional 1/4 turn. The 5/8 inch cap screws in bottom of posts shall be tightened to a snug fit only.

BILL OF MATERIAL

| Item | Unit | Quantity |
|------------------------|------|----------|
| Steel Railing Type S-1 | Foot | 600 |

PLAN-BOTT. SPLICE TYPICAL

RAIL SPLICE CONNECTION AT EXPANSION JT.

| | | | | | |
|------|---------------|-----|------|----------|----|
| DSGN | K.J. Hoffmann | | | | |
| DR | K.J. Hoffmann | | | | |
| CHK | K.E. Brandau | | | | |
| APVD | K.E. Brandau | NO. | DATE | REVISION | BY |

FRAUENHÖFFER
 Frauenhoffer and Associates, P.C. Consulting Engineers
 3002 Crossing Court Champaign, IL 61822 217-351-6268

STEEL RAILING TYPE S-1
 COUNTY HIGHWAY 2
 SECTION 04-00130-00-BR
 FULTON COUNTY
 SHEET 11
 DWG NO. 4056-s1.dgn
 DATE OCT 2005
 PROJ NO. 4056