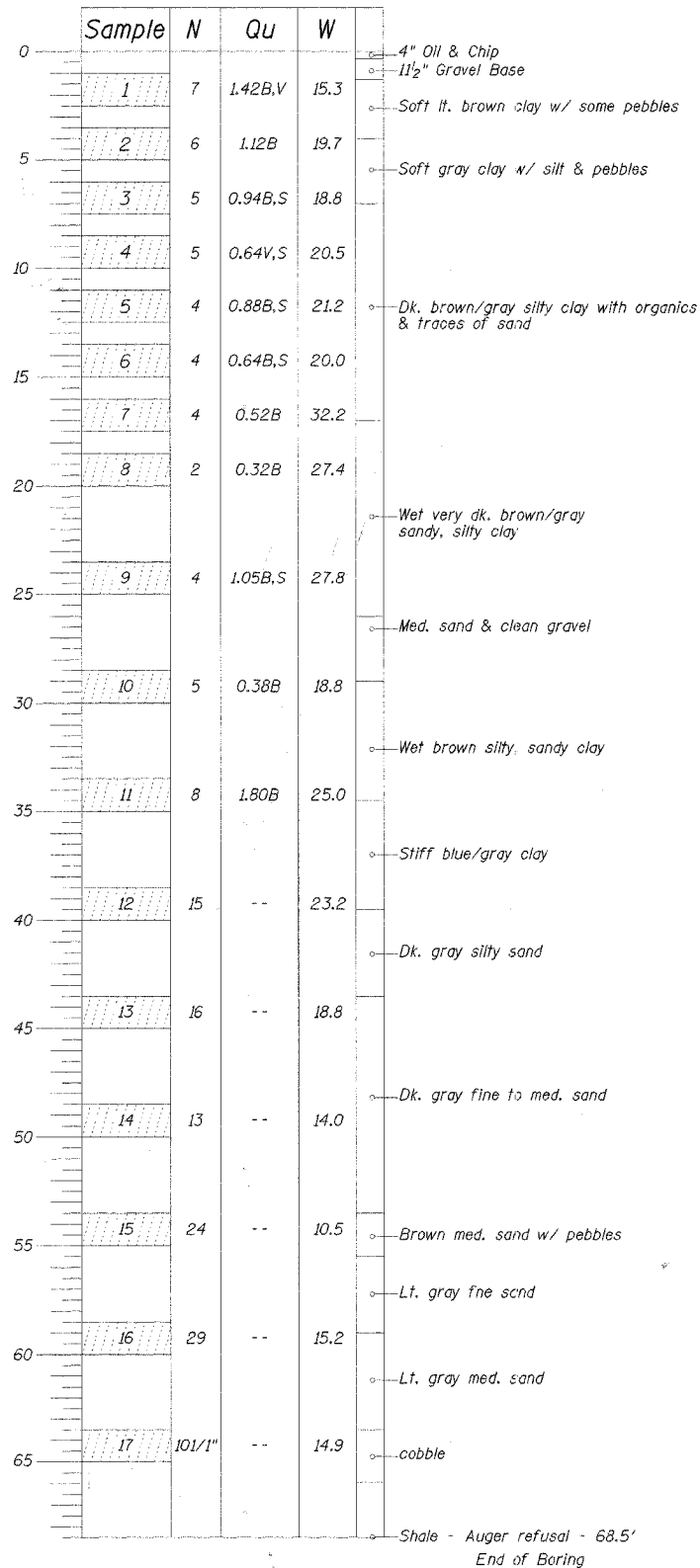


BORING B-1

Location: STA 10+79, 4.5' East of C of roadway
Elev. 99.30

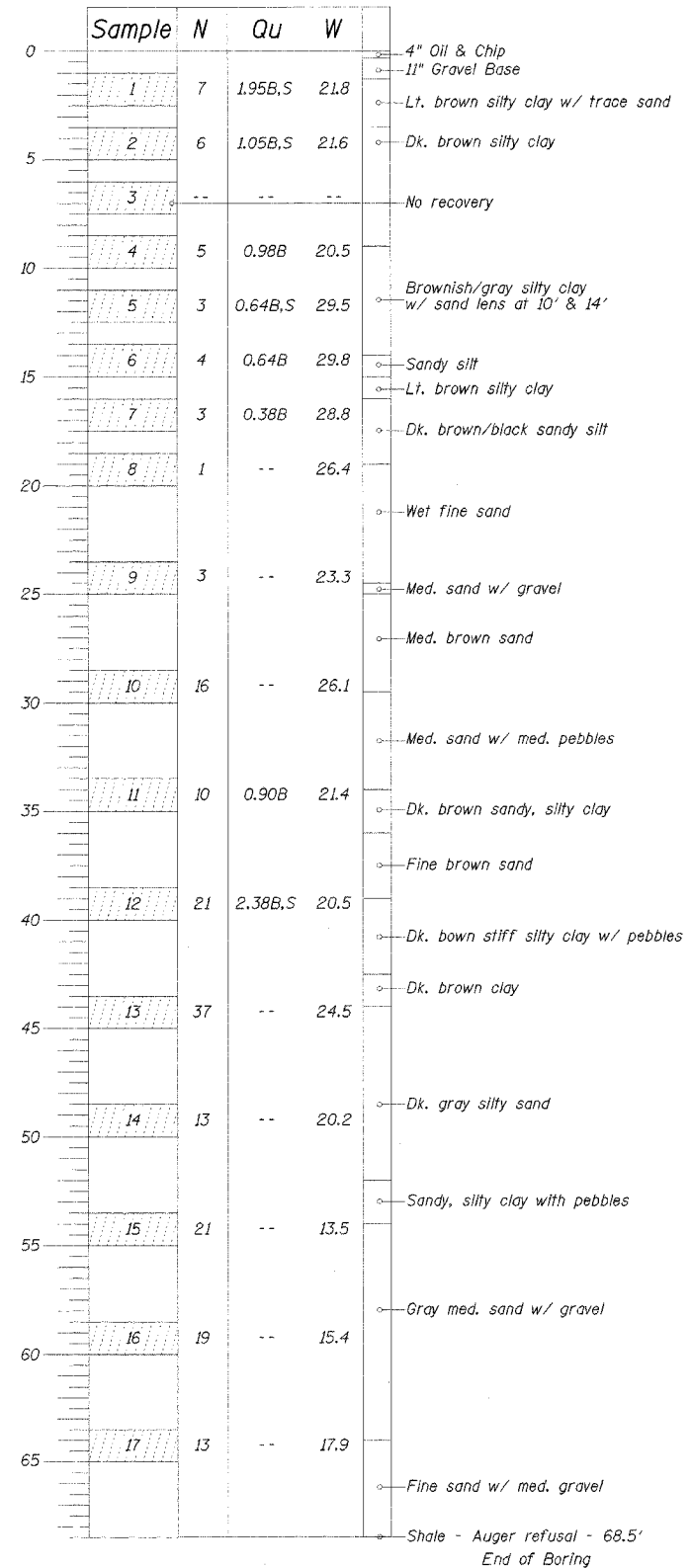
Water Levels
While Drilling: 25'
At Completion: 20'



BORING B-2

Location: STA 13+03.5, 5' West of C of roadway
Elev. 99.44

Water Levels
While Drilling: 18'
At Completion: 20'



BORING DATA

N - Standard Penetration Test - Blows per foot to drive 2" O.D. split spoon sampler 12" with 140 lb. hammer falling 30".
Qu - Unconfined Compressive Strength - Tons/Sq. Ft.
W - Water Content - Percentage of oven dry weight - %
B - Bulge Failure, V - Shear Failure, S - Splitting Failure
E - Estimated Value

CH 2	*	Fulton	14	14
------	---	--------	----	----

*04-00130-00-BR
CONTRACT #89373

DSGN					
DR					
CHK					
APVD	NO.	DATE	REVISION	BY	APVD

FRAUENHÖFFER

Frauenhoffer and Associates, P.C. Consulting Engineers
3002 Crossing Court Champaign, IL 61822 217-361-6268

BORINGS

COUNTY HIGHWAY 2
SECTION 04-00130-00-BR
FULTON COUNTY

SHEET	14
DWG NO.	borings.dwg
DATE	OCT 2005
PROJ NO.	4056