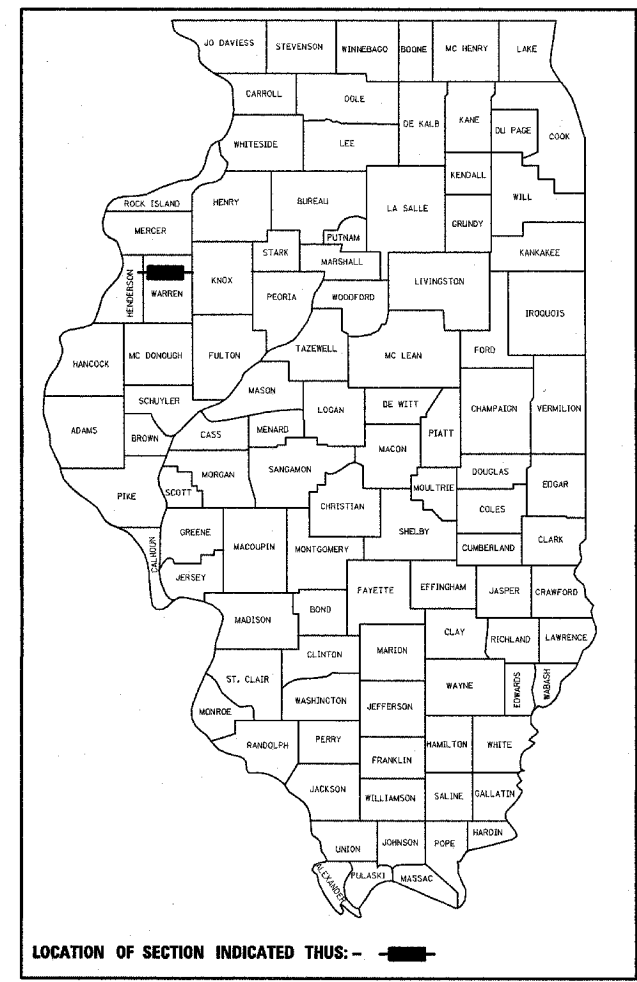


F.A.S. RTE.	SECTION	COUNTY	TOTAL SHEETS	SHEET NO.
405	04-00035-01-BR	WARREN	16	1
FED. ROAD DIST. NO. 7		ILLINOIS	PROJECT NO. BRS-405(103)	

CONTRACT NO. 89381



**STATE OF ILLINOIS
DEPARTMENT OF TRANSPORTATION
DIVISION OF HIGHWAYS**

**PROPOSED
HIGHWAY PLANS**

BRIDGE REPLACEMENT AND REHABILITATION PROGRAM

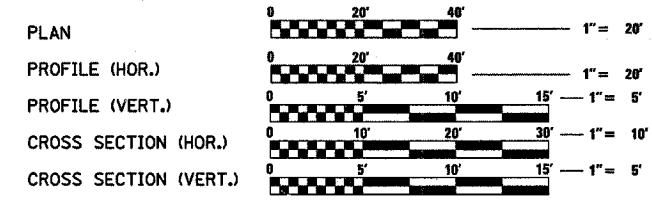
**F.A.S. ROUTE 405
SECTION 04-00035-01-BR
PROJECT COUNTY HIGHWAY 1 OVER MIDDLE HENDERSON CREEK
WARREN COUNTY
PROJECT NO. BRS-405(103)
JOB NO. C-94-097-05**

INDEX OF SHEETS

1. COVER
2. SUMMARY OF QUANTITIES, GENERAL NOTES, AND CONTROL POINTS
3. EXISTING AND PROPOSED TYPICAL SECTIONS
4. SCHEDULE OF QUANTITIES
5. REMOVAL PLAN
6. PLAN AND PROFILE
- 7.-12. BRIDGE PLANS
- 13.-15. CROSS SECTIONS
16. EXISTING BRIDGE PLAN

LIST OF STANDARDS

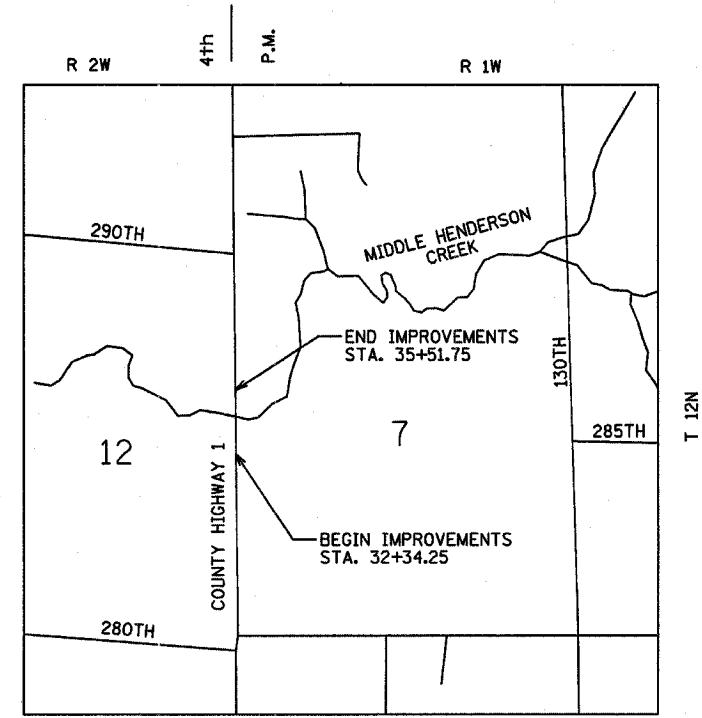
- | | |
|------------------|--|
| 280001-02 | TEMPORARY EROSION CONTROL SYSTEMS |
| 515001-02 | NAME PLATE FOR BRIDGES |
| 630001-06 | STEEL PLATE BEAM GUARDRAIL |
| 630301-03 | SHOULDER WIDENING FOR TYPE 1 (SPECIAL) GUARDRAIL TERMINALS |
| 631032-02 | TRAFFIC BARRIER TERMINAL TYPE 6A <i>Revised 4-10-06</i> |
| 635006-02 | REFLECTOR AND TERMINAL MARKER PLACEMENT |
| 635011-01 | REFLECTOR MARKER AND MOUNTING DETAILS |
| 701301-02 | LANE CLOSURE, 2L, 2W, SHORT TIME OPERATIONS |
| 702001-06 | TRAFFIC CONTROL DEVICES |
| B.L.R. 17-3 | TRAFFIC CONTROL DEVICES - DAY LABOR CONSTRUCTION |
| B.L.R. 21-6 | TYPICAL APPLICATION OF TRAFFIC CONTROL DEVICES FOR CONSTRUCTION ON RURAL LOCAL HIGHWAYS |
| B.L.R. 22-4 | TYPICAL APPLICATION OF TRAFFIC CONTROL DEVICES FOR CONSTRUCTION ON RURAL LOCAL HIGHWAYS (TWO LANE TWO WAY RURAL TRAFFIC) (ROAD CLOSED TO THRU TRAFFIC) |



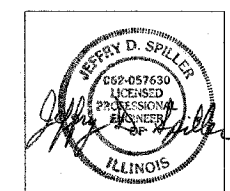
TOLL FREE
JOINT UTILITY LOCATING INFORMATION FOR EXCAVATORS
(J.U.L.I.E.) TELEPHONE NUMBER
1-800-892-0123

UTILITY NOTE

THE LOCATIONS OF THOSE BURIED AND ABOVEGROUND UTILITIES SHOWN ARE APPROXIMATE, ARE SHOWN FOR CONTRACTOR INFORMATIONAL USE ONLY, AND ARE NOT TO BE REFERENCED FOR CONSTRUCTION PURPOSES. THE IMPLIED PRESENCE OR ABSENCE OF UTILITIES IS NOT TO BE CONSTRUED BY THE OWNER, ENGINEER, CONTRACTOR, OR SUBCONTRACTORS TO BE AN ACCURATE AND COMPLETE REPRESENTATION OF UTILITIES THAT MAY OR MAY NOT EXIST ON THE CONSTRUCTION SITE. BURIED AND ABOVEGROUND UTILITY LOCATION, IDENTIFICATION, AND MARKING ARE THE SOLE RESPONSIBILITY OF THE CONTRACTOR. REROUTING, DISCONNECTION, PROTECTION, ETC. OF ANY UTILITIES MUST BE COORDINATED AMONG THE CONTRACTOR, UTILITY COMPANY, AND OWNER. SITE SAFETY, INCLUDING THE AVOIDANCE OF HAZARDS, ASSOCIATED WITH BURIED AND ABOVEGROUND UTILITIES REMAIN THE SOLE RESPONSIBILITY OF THE CONTRACTOR.



TOTAL AND NET LENGTH OF IMPROVEMENT: 317.50 FT = 0.060 MILES



DATE SIGNED: 2/10/06
LIC. EXP. DATE: 11/30/07

HANSON
Hanson Professional Services Inc.
© Copyright Hanson Professional Services Inc. 2006
Hanson Professional Services Inc.
2900 W. Willow Knolls Road
Peoria, Illinois 61614-1129

**QCQA BITUMINOUS
SUPERPAVE PROJECT**

APPROVED Feb 10, 2006
Jim Quattrone
COUNTY ENGINEER

APPROVED ~~_____~~ 20
ROAD COMMISSIONER

PASSED Feb 20, 2006
John Laballe
DISTRICT FOUR ENGINEER OF
LOCAL ROADS & STREETS

Releasing For
Bid Based on
Limited Review J. E. Arave WSL FEB 21, 20 06
DEPUTY DIRECTOR OF HIGHWAYS,
REGION THREE ENGINEER

STATE OF ILLINOIS
DEPARTMENT OF TRANSPORTATION

ADT (2000) = 1700, SU = 5%
HIGHWAY CLASS: MAJOR COLLECTOR (NON-URBAN)
DESIGN SPEED: 60 MPH
DESIGN POLICY: BLR MANUAL
VARIANCES GRANTED: NONE
COMMITMENTS: NONE

CATALOG# 033090-00

Illinois Licensed
Professional Service
Corporation
#184-001084