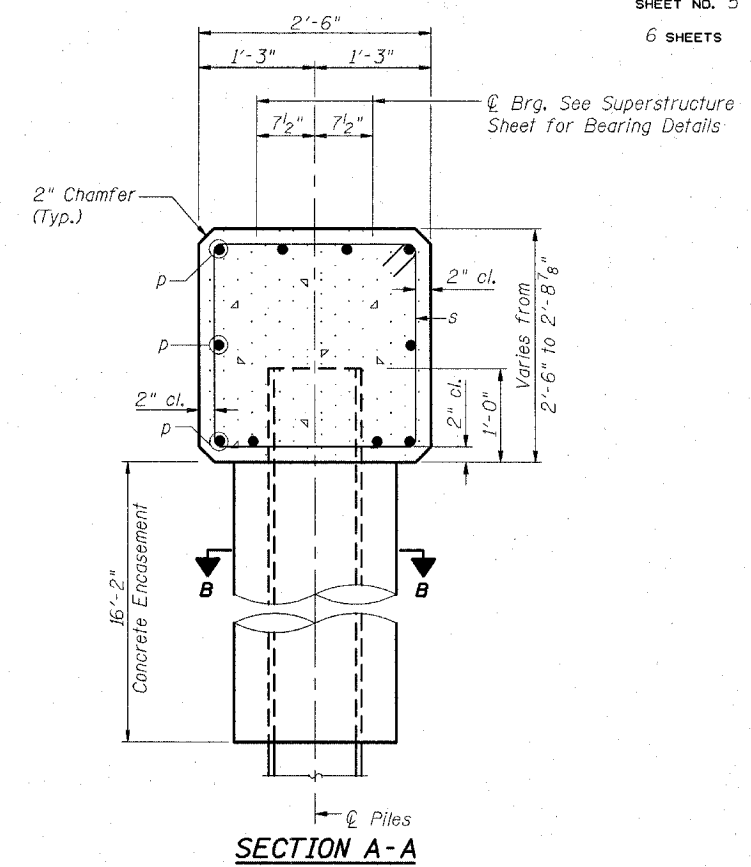
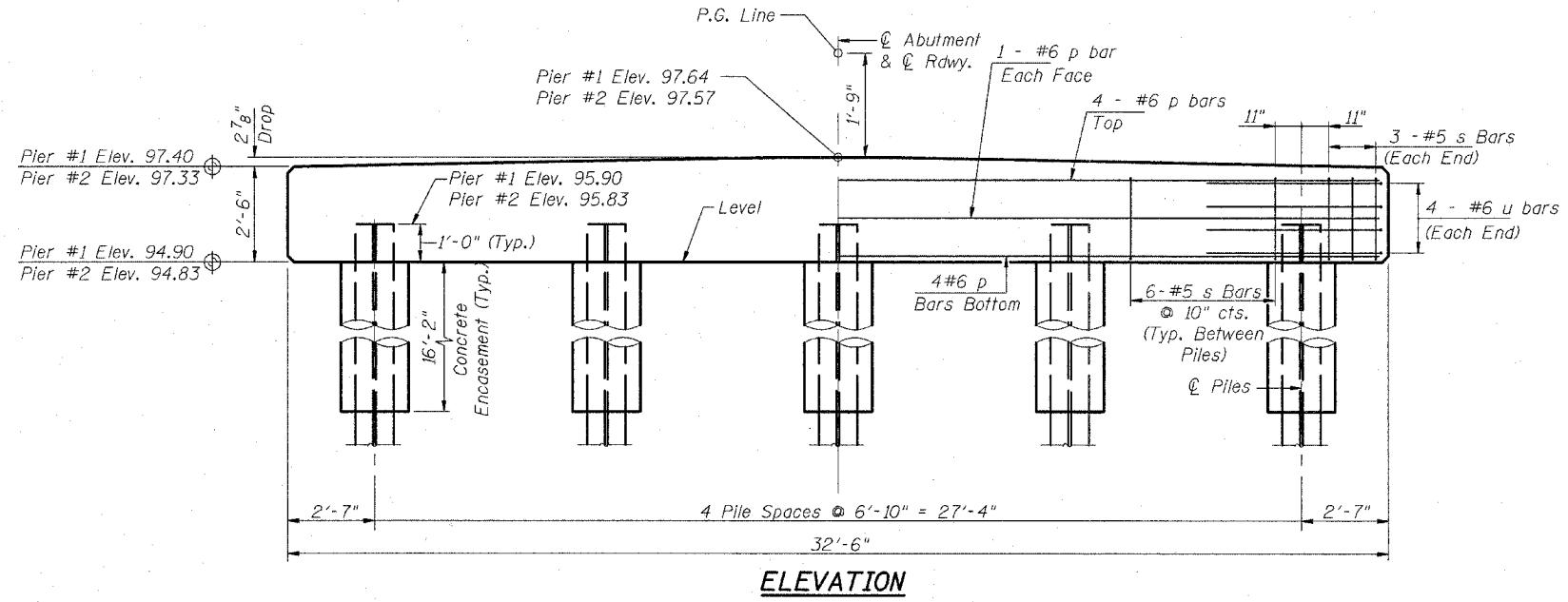


☉ Pier 1 Sta. 33+80.33
☉ Pier 2 Sta. 34+05.67

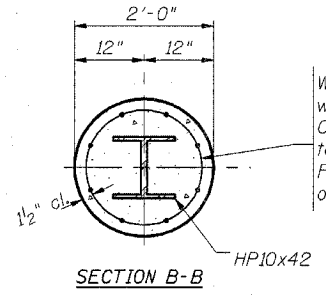
CAP PLAN



SECTION A-A

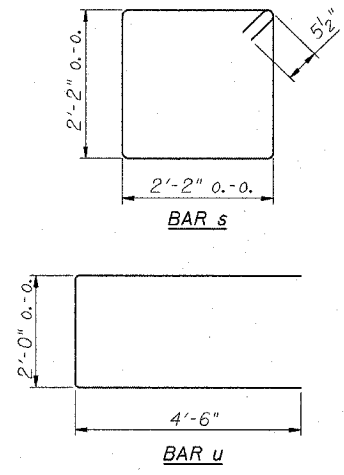


ELEVATION



SECTION B-B

Welded wire fabric 6x6-W4.0xW4.0 weighing 58±n#±d±e/100 sq. ft. The Cost of WWF shall be incidental to the Concrete Encasement. Forms for encasement may be omitted when soil conditions will permit.



BILL OF MATERIAL - TWO PIERS

Bar	No.	Size	Length	Shape
p	20	#6	32'-2"	—
s	60	#5	9'-7"	□
u	16	#6	11'-0"	—
Concrete Structures		Cu. Yds.	15.8	
Reinforcement Bars, Epoxy Ctd.		Lbs.	1,830	
Furn. Steel Piles, HP10x42		Lin. Ft.	243	
Driving Steel Piles		Lin. Ft.	243	
Test Piles, Steel HP10x42		Each	1	
Concrete Encasement		Cu. Yds.	18.3	

PILE DATA - Two Piers

Type: HP10x42
Capacity: Driven to Refusal
Estimated Length: 27 Ft. @ Pier 1.
27 Ft. @ Pier 2.
Number Required: 10*

* Includes One Test Pile at Pier 1.

REVISIONS	
NAME	DATE

ILLINOIS DEPARTMENT OF TRANSPORTATION
F.A.S. 405
SECTION 04-00035-01-BR
WARREN COUNTY
COUNTY HIGHWAY 1 OVER MIDDLE HENDERSON CREEK
PIER DETAILS
SCALE: VERT. _____
HORIZ. _____
DATE 02/06/06
DRAWN BY RLA
CHECKED BY JJT

HANSON Professional Services Inc. 2006
 Copyright Hanson Professional Services Inc. 2006
 10/11/05 RLA
 02/02/06 RLA
 02/06/06 JJT
 02/06/06 RLA
 02/06/06 JJT