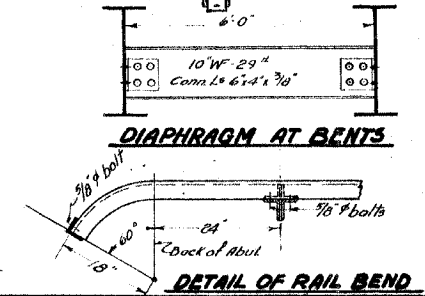
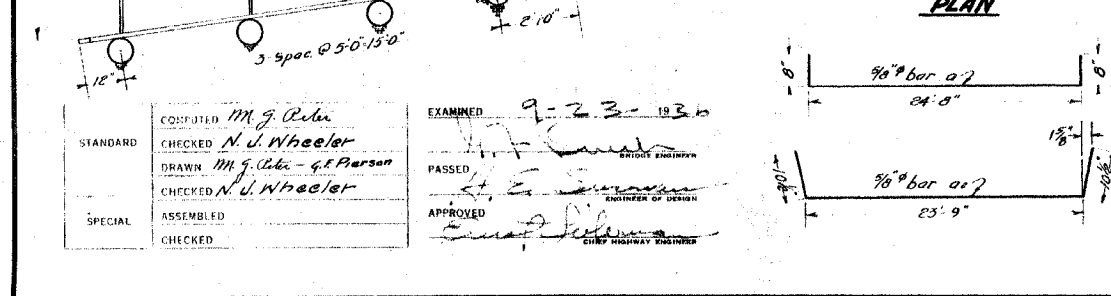
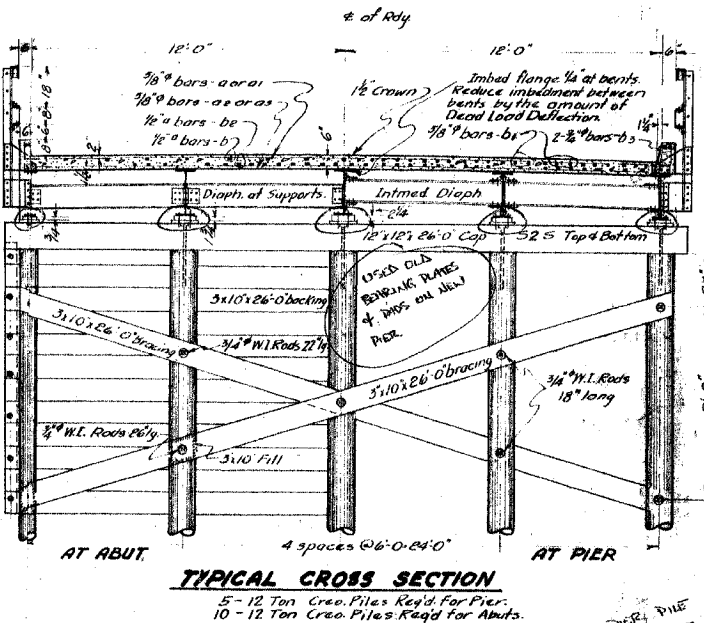
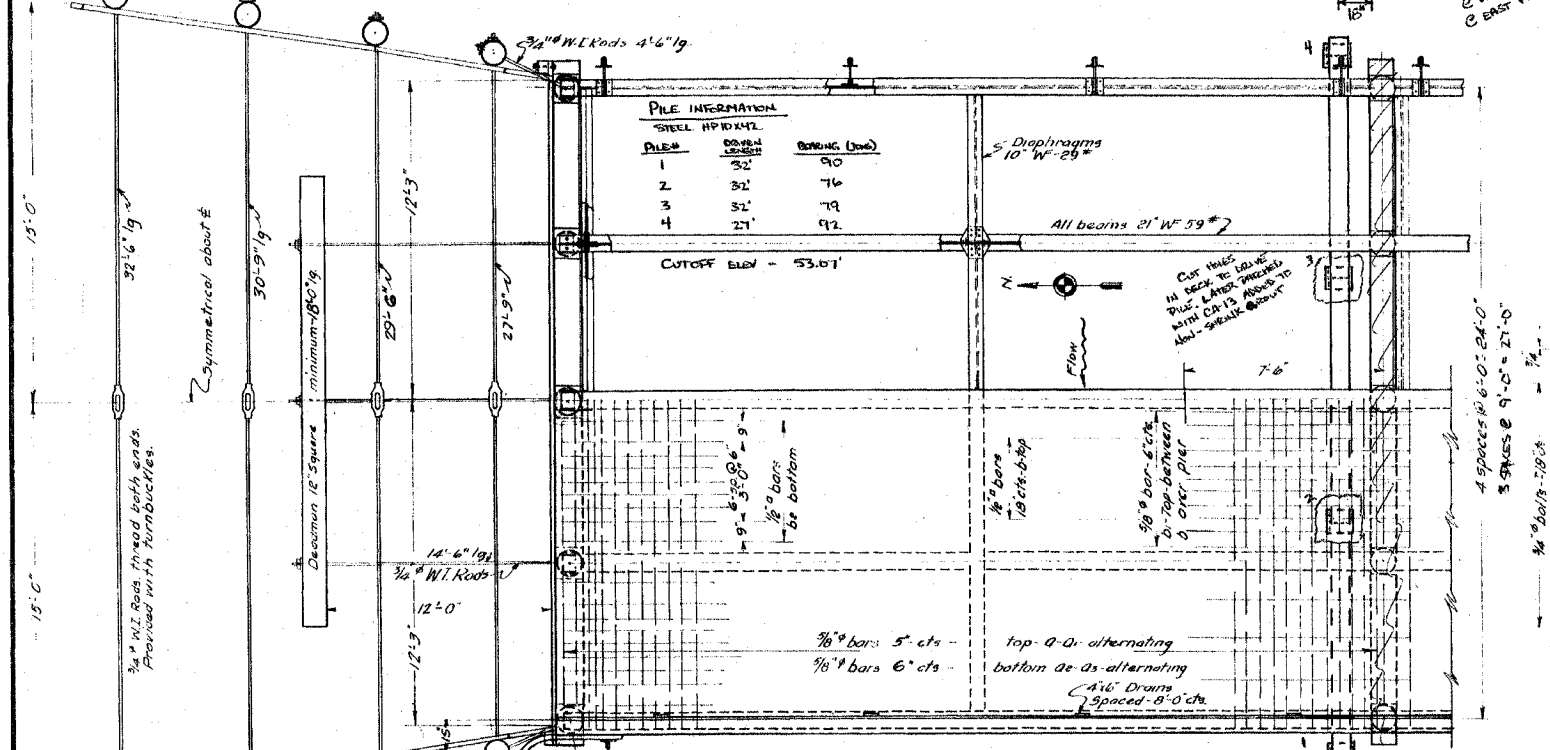
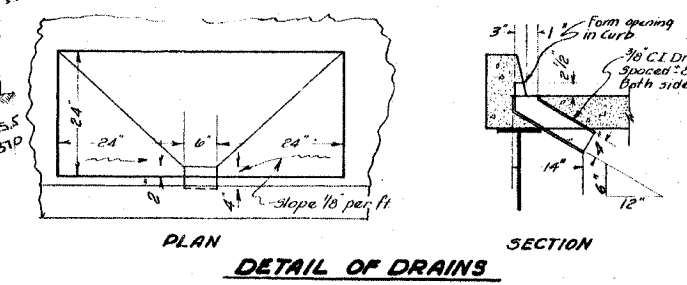
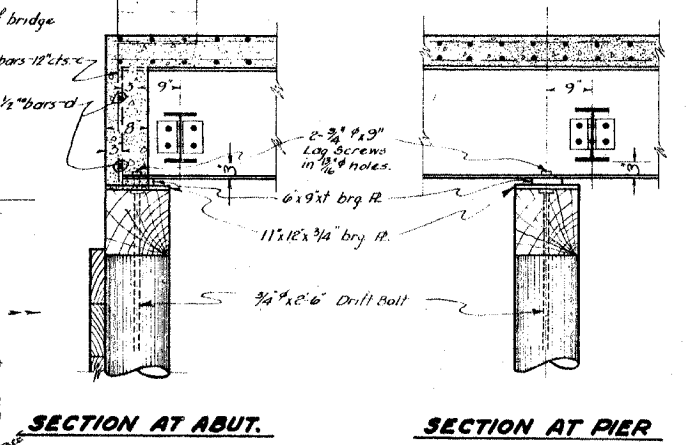
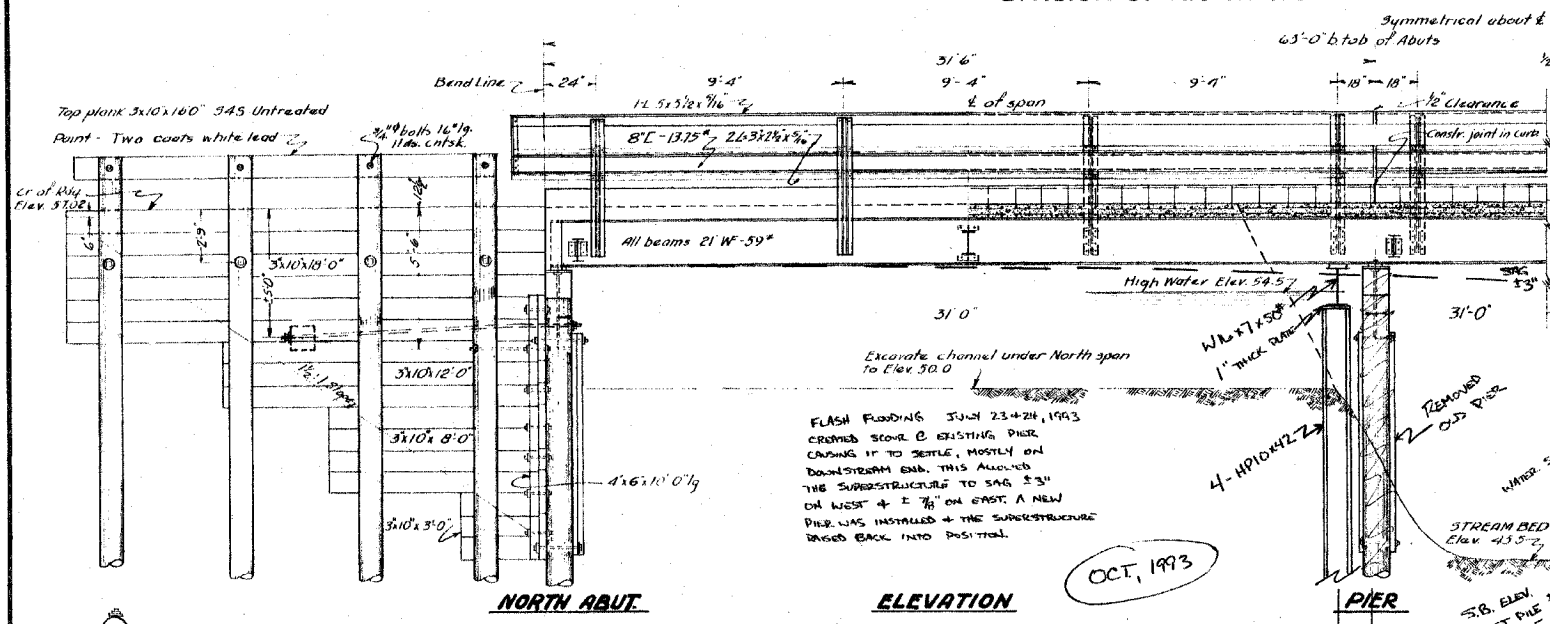


STATE OF ILLINOIS
DEPARTMENT OF PUBLIC WORKS & BUILDINGS
DIVISION OF HIGHWAYS

SHEET NO. 1
2 SHEETS

B.M. spike in telephone pole left Sta. 50+31
Elev. 51.63
Existing structure, 1 beam, 2 spans @ 150', roadway 15'-0" with pile pier to be removed.



094-3003
PLAN ELEV.

60.23	Top of Railing
57.56	Top of Curb
57.02	Crown of Deck
56.89	Top of Deck Drains
59.64	Low Steel
59.52	Top of Timber Caps
59.5	D.H.W.F.
53.52	Top of Piles
43.5	Stream Bed

FIRST NOTICED SAG IN BRIDGE ON 10-8-93, PLACED 10 TON LOAD LIMIT ON STRUCTURE, CLOSED STRUCTURE FOR REPAIR (SUMMER) ON 10-21-93 @ Noon.
REOPENED BRIDGE WITH NO RESTRICTION @ 1:00 PM 10-28-93. WE BELIEVE THAT, DUE TO THE SCOUR, HEAVY LOADS ACTUALLY "DROVE" THE EXISTING PIER PILE DEEPER. A ±1" GAP EXISTED BETWEEN THE WEST PILE & THE PILE CAP (LESS GAP EXISTED ON EACH PILE GOING EAST), SHIMS WERE DRIVEN IN GAPS TO RESTORE SOME STABILITY UNTIL REPAIRS COULD BE MADE.

GENE LARKIN

SHOWN FOR INFORMATION ONLY

DESIGN NOT ORIGINALLY COMPLETED BY HANSON PROFESSIONAL SERVICES INC.

MIDDLE HENDERSON CREEK
S.A.R.T. 4 SEC. 35 M.F.T.
WARREN COUNTY
STA. 52+59

REVISIONS	
NAME	DATE

ILLINOIS DEPARTMENT OF TRANSPORTATION
F.A.S. 405
SECTION 04-00035-01-BR
WARREN COUNTY
COUNTY HIGHWAY 1 OVER MIDDLE HENDERSON CREEK
EXISTING BRIDGE PLAN

SCALE: VERT. DRAWN BY RLA
 HORIZ. CHECKED BY JDS
DATE 02/06/06



LAYOUT RLA 02/03/05
DRAWN RLA 02/03/05
REVIEWED JDS 02/03/05

STANDARD
DESIGNED M.G. Rubin
CHECKED N.J. Wheeler
DRAWN M.G. Rubin - G.P. Parson
CHECKED N.J. Wheeler
SPECIAL
ASSEMBLED
CHECKED

EXAMINED 9-23-10
PASSED
APPROVED