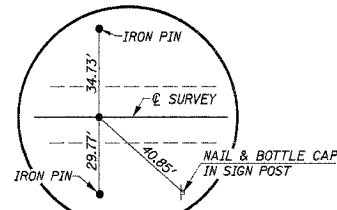
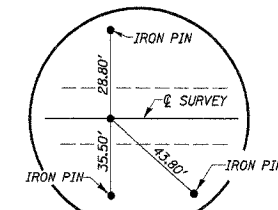


S.W. 1/4 SEC. 27, T. 13 N., R. 8 E., 4TH P.M.
 DAVID E. & CATHERINE J. IRELAN

ROUTE	SECTION	COUNTY	TOTAL SHEETS	SHEET NO.
C.H. 6	05-00085	MARSHALL	13	3
STA. 10+00.00		TO STA. 19+99.25		
ILLINOIS		PROJ. NO. BROS-1232D		
CONTRACT NO. 69397				



P.O.T. STA. 10+00.00
 IRON PIN (FLUSH)



P.O.T. STA. 19+99.25
 IRON PIN (FLUSH)

PIPES TO BE REMOVED
 LT. STA. 13+05, 15" C.M.P. 23' LONG
 RT. STA. 17+24, 15" C.M.P. 61' LONG
 QUANTITIES INCLUDED IN "EARTH EXCAVATION".

LT. STA. 13+05 F.E.
 PIPE CULVERT, CLASS D
 TYPE 1, E.R.S. 15", 40' LONG

STA. 17+29.88
 168' LT

RT. STA. 17+30 D.F.E.
 PIPE CULVERT, CLASS D
 TYPE 1, E.R.S. 15", 52' LONG

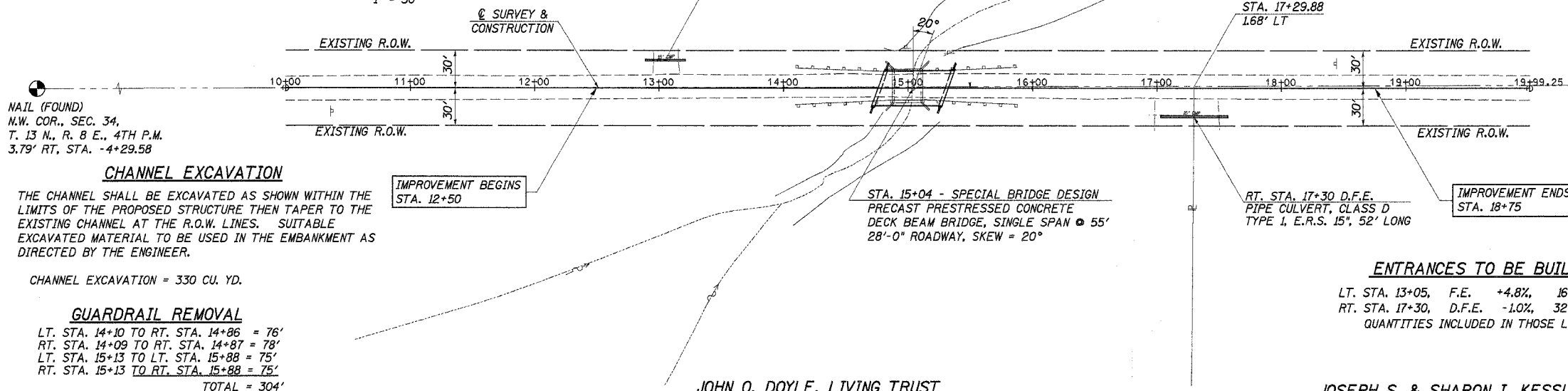
STA. 15+04 - SPECIAL BRIDGE DESIGN
 PRECAST PRESTRESSED CONCRETE
 DECK BEAM BRIDGE, SINGLE SPAN 55'
 28'-0" ROADWAY, SKEW = 20°

ENTRANCES TO BE BUILT

LT. STA. 13+05, F.E. +4.8%, 16' ROADBED
 RT. STA. 17+30, D.F.E. -1.0%, 32' ROADBED
 QUANTITIES INCLUDED IN THOSE LISTED

EXISTING STRUCTURE NO. 062-3124
 SINGLE SPAN, CONCRETE SLAB BRIDGE, WITH CLOSED
 CONCRETE ABUTMENTS AND WINGWALLS.
 BK.-TO-BK. = 26'-0"
 O.-TO-O. = 26'-4"
 0° SKEW
 REMOVAL OF EXISTING STRUCTURES = 1 EACH

UTILITIES
 BURIED GAS PIPE
 CILCO
 1-309-672-5142



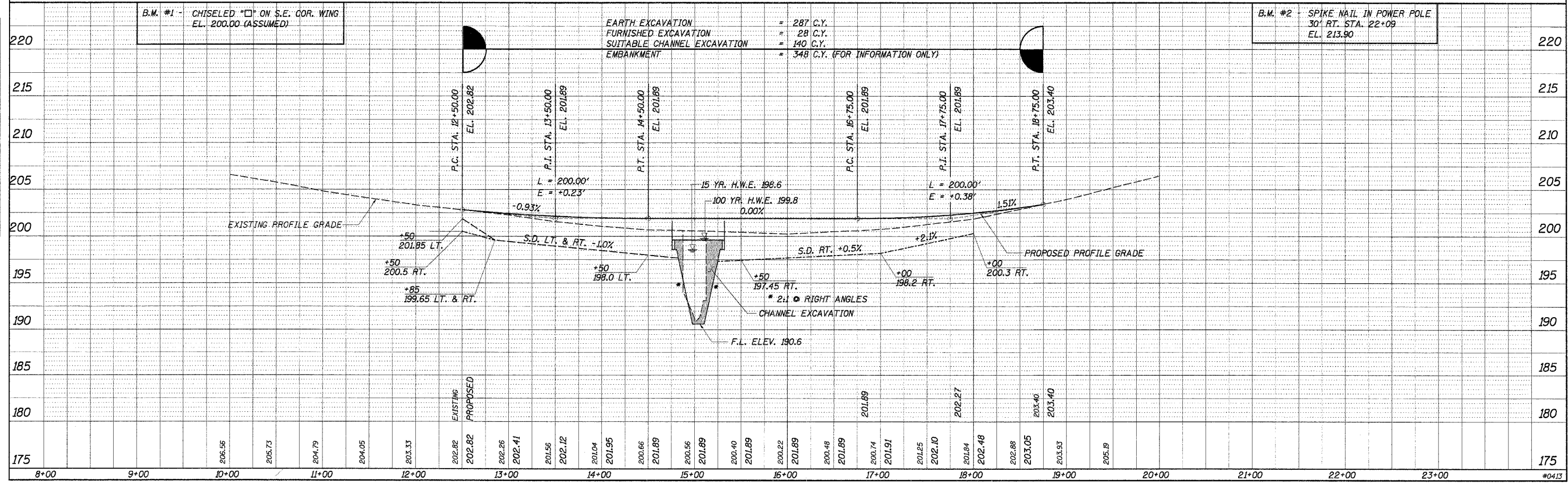
CHANNEL EXCAVATION
 THE CHANNEL SHALL BE EXCAVATED AS SHOWN WITHIN THE
 LIMITS OF THE PROPOSED STRUCTURE THEN TAPER TO THE
 EXISTING CHANNEL AT THE R.O.W. LINES. SUITABLE
 EXCAVATED MATERIAL TO BE USED IN THE EMBANKMENT AS
 DIRECTED BY THE ENGINEER.
 CHANNEL EXCAVATION = 330 CU. YD.

GUARDRAIL REMOVAL
 LT. STA. 14+10 TO RT. STA. 14+86 = 76'
 RT. STA. 14+09 TO RT. STA. 14+87 = 78'
 LT. STA. 15+13 TO LT. STA. 15+88 = 75'
 RT. STA. 15+13 TO RT. STA. 15+88 = 75'
 TOTAL = 304'

JOHN O. DOYLE, LIVING TRUST

N.W. 1/4 SEC. 34, T. 13 N., R. 8 E., 4TH P.M.

JOSEPH S. & SHARON I. KESSLING



EARTH EXCAVATION = 287 C.Y.
 FURNISHED EXCAVATION = 28 C.Y.
 SUITABLE CHANNEL EXCAVATION = 140 C.Y.
 EMBANKMENT = 348 C.Y. (FOR INFORMATION ONLY)

B.M. #2 SPIKE NAIL IN POWER POLE
 30' RT. STA. 22+09
 EL. 213.90

DATE	BY	REVISION

DATE	BY	REVISION