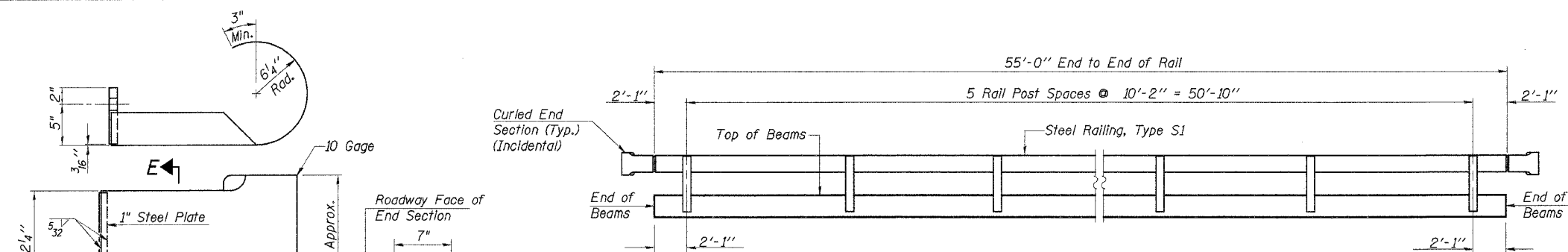


ROUTE NO.	SECTION	COUNTY	TOTAL SHEETS	SHEET NO.
C.H. 8	05-00085-00-BR	MARSHALL	13	6
		ILLINOIS	PROJ. NO. BR05-123(2)	

CONTRACT NO. 89397

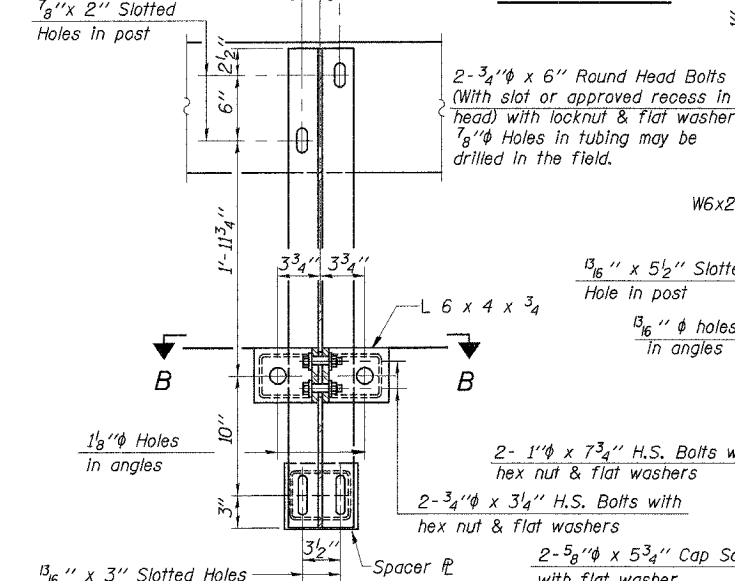


ELEVATION

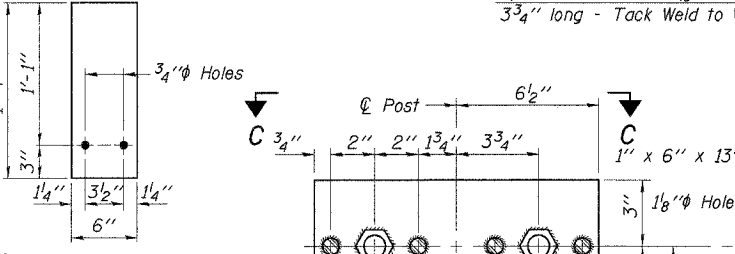
CURLED END SECTION DETAILS
(4 Required)

10 Gage
3" Min.
6 1/4" Rad.
5" 2"
3/16"
1" Steel Plate
12 1/4"
3/4"
24" Approx.
16" Approx.
7"
5"
1/2" φ Holes
4"
4"
12"

SECTION E-E



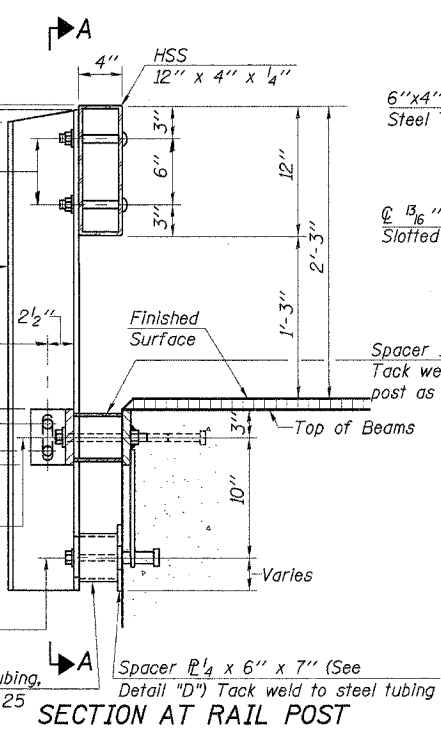
SECTION A-A



1/4" SHIM PLATE

Note: For multi-span bridges, sufficient 1/4" x 6" x 1'-4" galvanized steel shims shall be provided to align rail between adjacent spans. Cost incidental to Steel Railing.

DESIGNED	SFM
CHECKED	FJS
DRAWN	SAP & JPS
CHECKED	SFM



SECTION AT RAIL POST

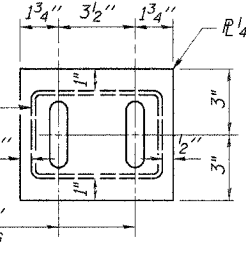
* 1" H.S. Nut AASHTO M-164 welded to P
Cast 1" voids behind each nut

** Whenever the lower insert assemblies interfere with strand locations, the #3 bars shall be cut and adjusted in order to allow raising or lowering of the lower inserts. Maximum adjustment not to exceed 1/2". (Precast Prestressed Concrete Deck Beam Bridges Only)

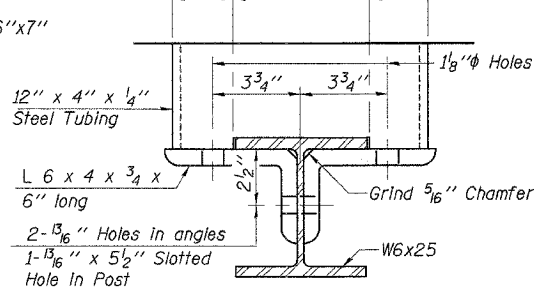
3/4" φ XXS Pipe or Hex Coupler Nuts conforming to AASHTO M291, Grade A - 3" long welded to #3 bar and Tap pipe for 5/8" φ Cap Screw.

ANCHOR DEVICE

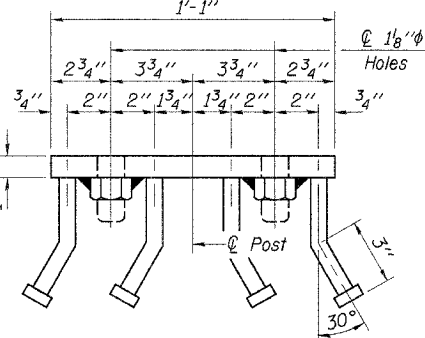
* Threaded areas shall be plugged or blocked off during casting of beam.



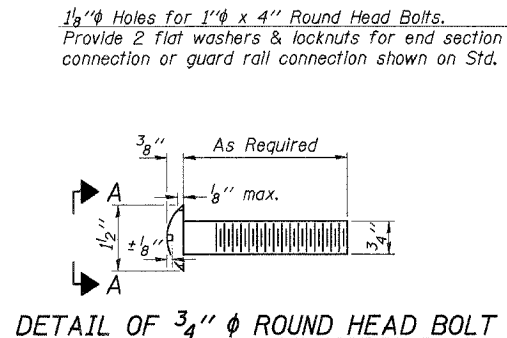
DETAIL "D"



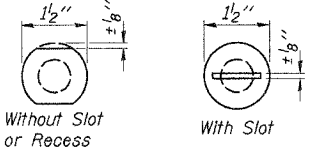
SECTION B-B



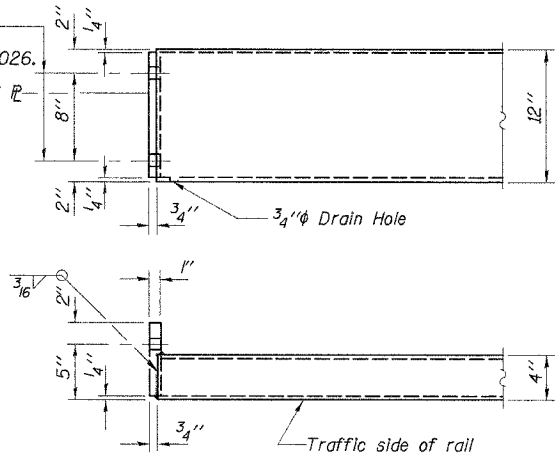
VIEW C-C



DETAIL OF 3/4" φ ROUND HEAD BOLT



VIEW A-A



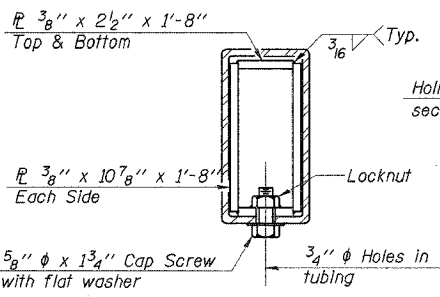
END OF RAIL DETAILS

BILL OF MATERIAL

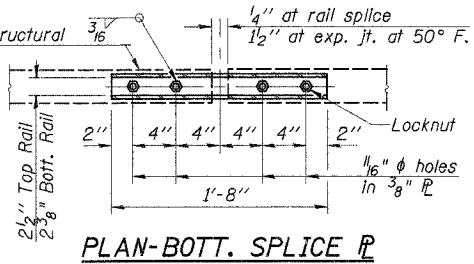
Item	Unit	Quantity
Steel Railing, Type S1	Foot	110

STEEL RAILING, TYPE S1

COUNTY HIGHWAY 8
SECTION 05-00085-00-BR
MARSHALL COUNTY
STATION 15+04



SECTIONS AT RAIL SPLICE



PLAN-BOTT. SPLICE P TYPICAL

4440 ASH GROVE
SPRINGFIELD, IL 62711
(217) 793-8600
oasinc@famvid.com

OZYURT AND STONE, INC.
CONSULTING ENGINEERS

JOB NO.: 0413
FILE: RAIL_SL1DGN
DATE: 01/31/06