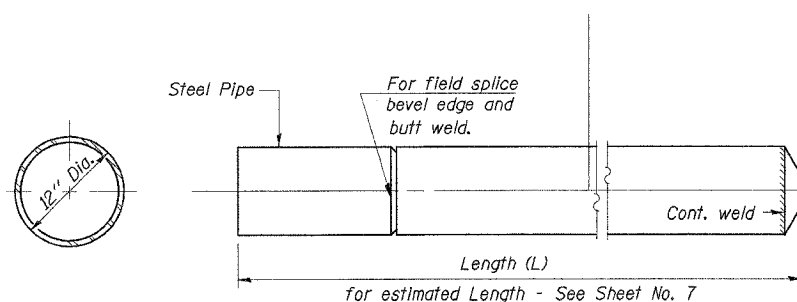


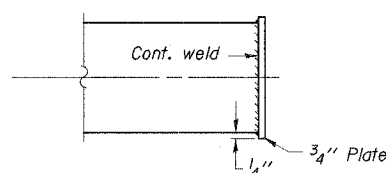
| ROUTE NO. | SECTION        | COUNTY   | TOTAL SHEETS          | SHEET NO. |
|-----------|----------------|----------|-----------------------|-----------|
| C.H. 8    | 05-00085-00-BR | MARSHALL | 13                    | 8         |
|           |                | ILLINOIS | PROJ. NO. BROS-123(2) |           |

CONTRACT NO. 89397

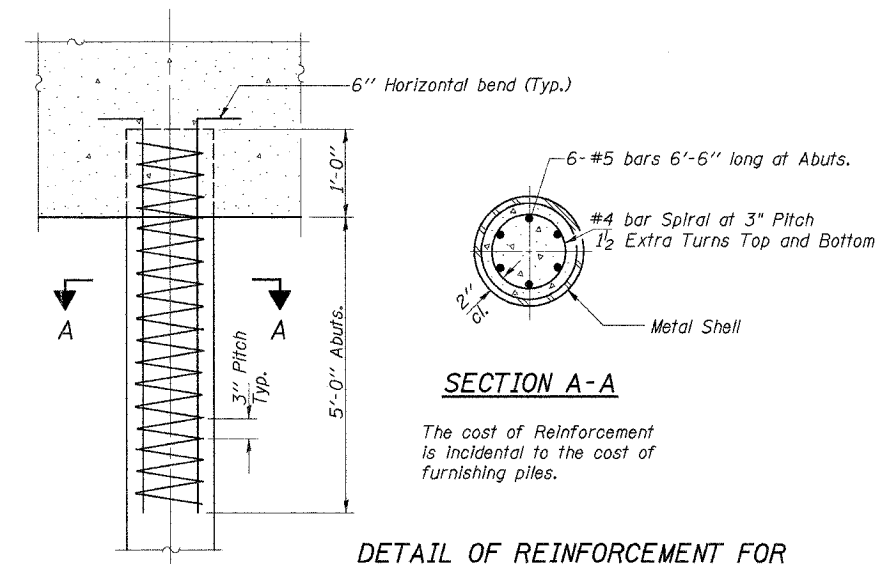
Notes: Drivng and bearing ends of pipe shall be cut square.  
The thickness of the shell shall be 0.1793 inches with a tolerance of 5%. The shell shall be in accordance with Article 1006.05(a) of the Standard Specifications.



DETAIL OF CYLINDRICAL STEEL SHELL FOR CAST IN PLACE CONCRETE PILES



OPTIONAL FLAT END



DETAIL OF REINFORCEMENT FOR METAL SHELLS

DETAIL OF METAL SHELL FOR CAST IN PLACE CONCRETE PILES

|          |           |
|----------|-----------|
| DESIGNED | SFM       |
| CHECKED  | FJS       |
| DRAWN    | SAP & JPS |
| CHECKED  | SFM       |

|  |   |  |
|--|---|--|
| <b>CONCRETE PILE DETAILS</b>   |   |  |
| COUNTY HIGHWAY 8<br>SECTION 05-00085-00-BR<br>MARSHALL COUNTY<br>STATION 15+04 |   |  |
| 4440 ASH GROVE<br>SPRINGFIELD, IL 62711<br>(217) 783-8600<br>oasinc@famvid.com | <b>OZYURT AND STONE, INC.</b><br>CONSULTING ENGINEERS | JOB NO.: 0413<br>FILE: 0413PILES.DGN<br>DATE: 01/31/06 |