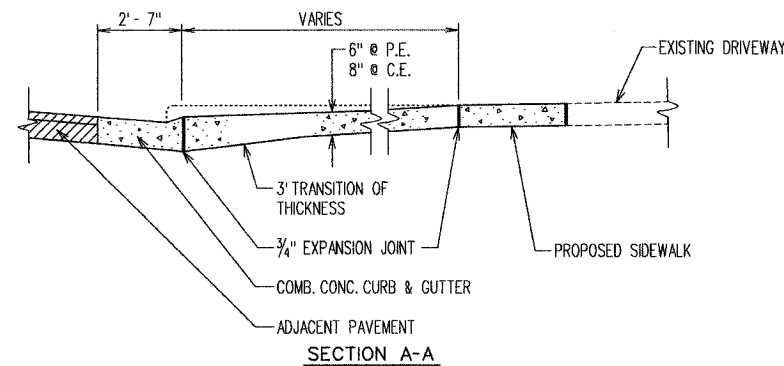
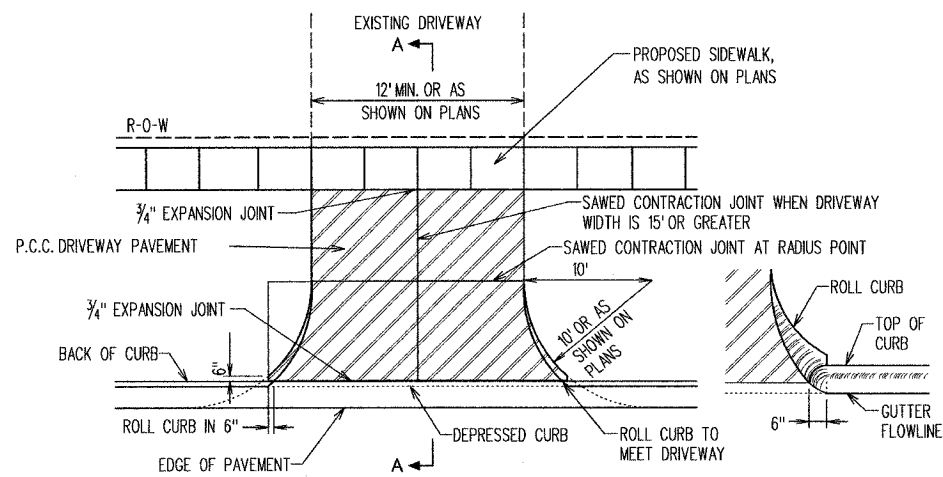


SECTION	COUNTY	TOTAL SHEETS	SHEET NO.
01-00088-00-WR	CHAMPAIGN	21	13
S.I.A. TO STA.			
F.H.W.A. REG.	ILLINOIS	PROJECT	



P.C.C. DRIVEWAY ENTRANCE DETAIL

NOTES:

THE COST OF CONSTRUCTING THE P.C. CONCRETE SIDEWALK 6" OR 8" THICK THROUGH DRIVEWAYS SHALL BE CONSIDERED INCIDENTAL TO THE P.C. CONCRETE SIDEWALK 5" AND NO ADDITIONAL COMPENSATION WILL BE ALLOWED.

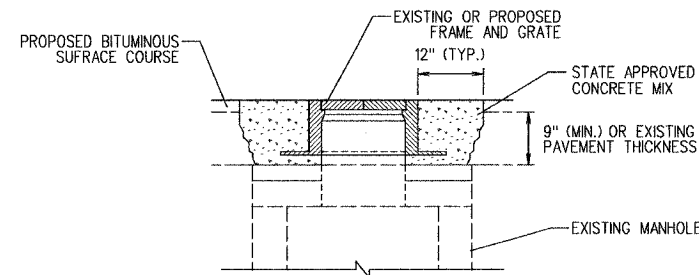
THE COST OF CONSTRUCTING THE P.C. CONCRETE DRIVEWAY PAVEMENT THICKER ADJACENT TO THE COMBINATION CONCRETE CURB AND GUTTER AS SHOWN IN SECTION A-A AND SECTION B-B WILL BE CONSIDERED INCIDENTAL TO THE P.C. CONCRETE DRIVEWAY PAVEMENT AND NO ADDITIONAL COMPENSATION WILL BE ALLOWED.

WHEN THE WIDTH OF THE P.C. CONCRETE DRIVEWAY PAVEMENT IS 15 FEET OR GREATER A CONSTRUCTION JOINT, APPROVED BY THE ENGINEER, SHALL BE PLACED IN THE CENTER OF THE DRIVEWAY.

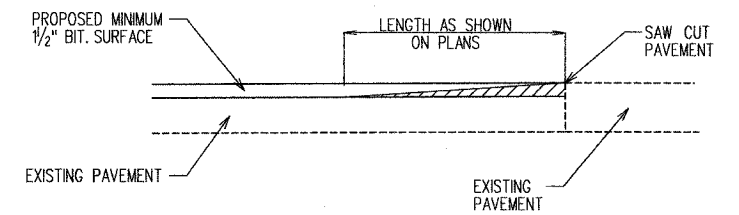
THE MINIMUM WIDTH OF P.C. CONCRETE DRIVEWAY PAVEMENT SHALL BE 12 FEET AND MAXIMUM WIDTH OF 36 FEET UNLESS SHOWN OTHERWISE ON THE PLANS.

VARIABLE HEIGHT CURB ADJACENT TO P.C. CONCRETE DRIVEWAY PAVEMENT SHALL BE CONSTRUCTED MONOLITHIC WITH AND INCLUDED IN THE AREA OF P.C. CONCRETE DRIVEWAY PAVEMENT AND NO ADDITIONAL COMPENSATION WILL BE ALLOWED.

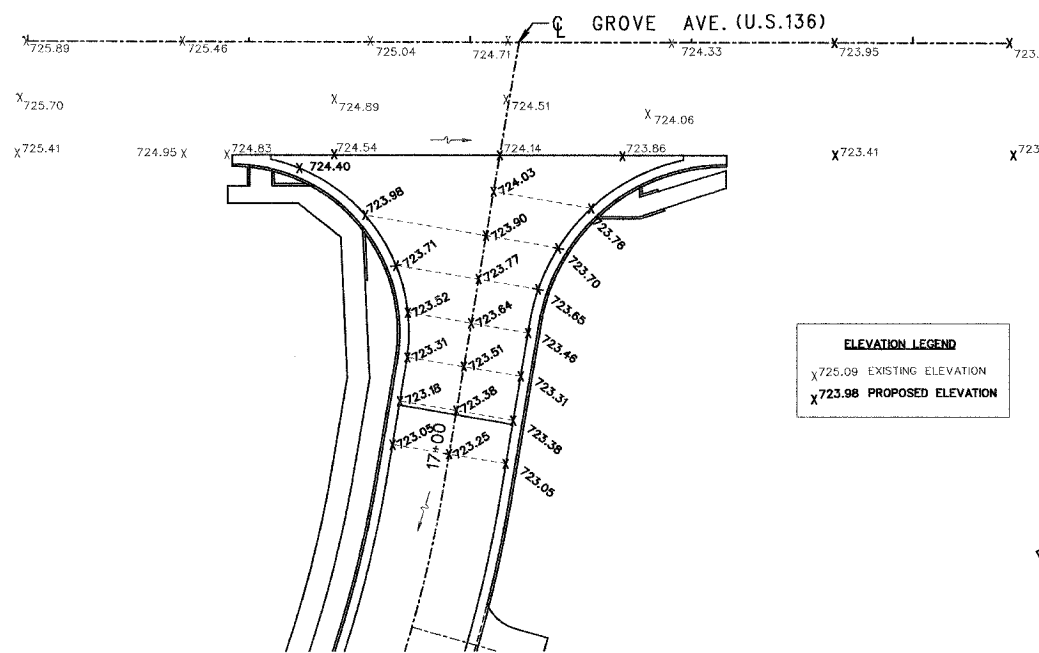
ALL COST OF CONSTRUCTING THE COMBINATION CONCRETE CURB AND GUTTER AS SHOWN SHALL BE INCLUDED IN THE CONTRACT UNIT PRICE PER FOOT FOR COMBINATION CONCRETE CURB AND GUTTER OF THE TYPE SPECIFIED IN THE PLANS.



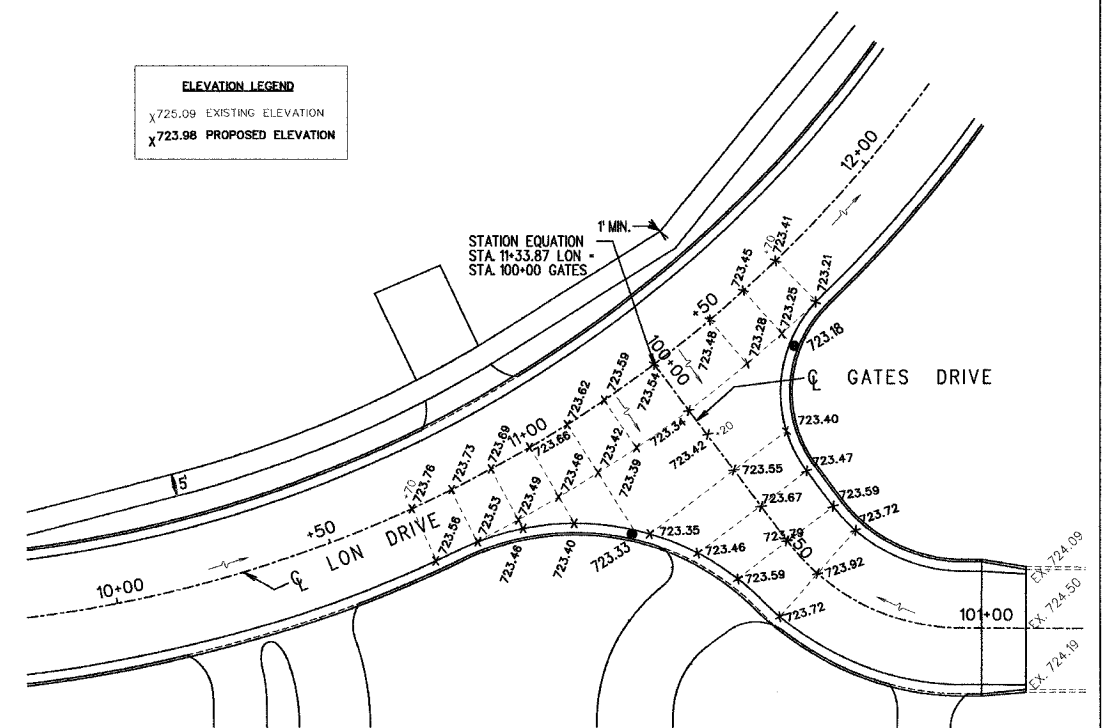
MANHOLES TO BE ADJUSTED



BIT. SURFACE REMOVAL-BUTT JOINT DETAIL



**INTERSECTION DETAIL
LON DRIVE AND US 136
SCALE 1" = 20'**



**INTERSECTION DETAIL
LON DRIVE AND GATES DRIVE
SCALE 1" = 20'**