

SECTION	COUNTY	TOTAL SHEETS	SHEET NO.
01-00088-00-WR	CHAMPAIGN	21	1
STA.	TO STA.		
F.H.W.A. REG.	ILLINOIS	PROJECT	

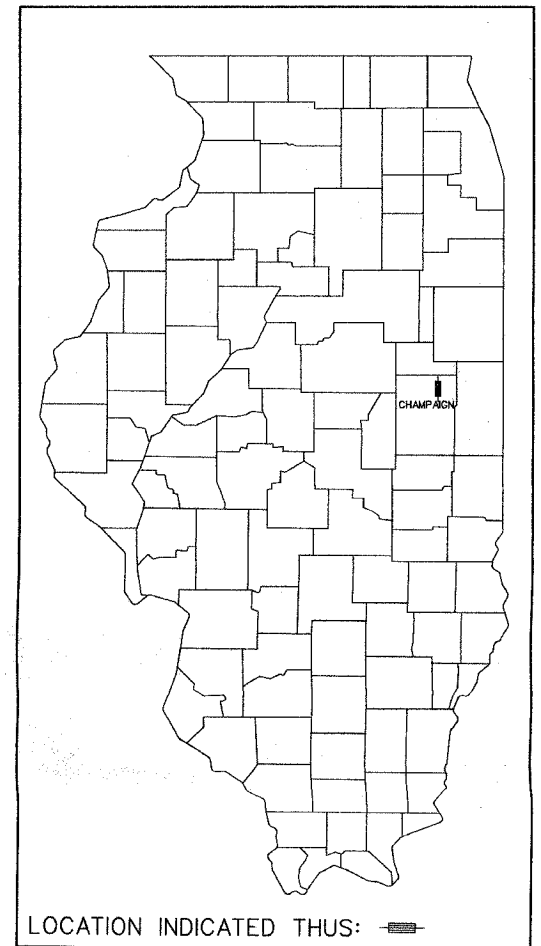
INDEX OF SHEETS

SHEET NO.	DESCRIPTION
1	COVER SHEET
2	SUMMARY OF QUANTITIES
3	GENERAL NOTES AND LEGEND
4	TYPICAL SECTIONS
5-6	SCHEDULES OF QUANTITIES
7-8	REMOVAL SHEETS
9-10	PLAN SHEETS
11-12	PROFILE SHEETS
14-16	DETAIL SHEETS
17-21	CROSS SECTIONS

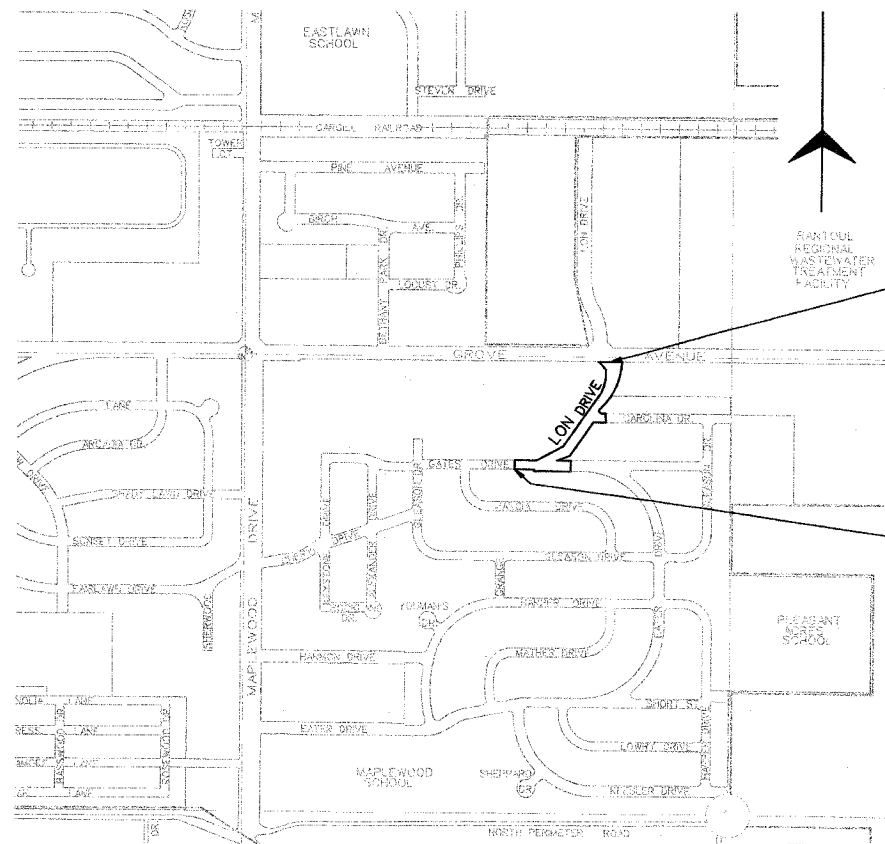
ILLINOIS DEPT. OF TRANSPORTATION
STANDARD DRAWINGS

STANDARD NO.	DESCRIPTION
280001-02	TEMPORARY EROSION CONTROL SYSTEMS
424001-04	CURB RAMPS FOR SIDEWALKS
442201-01	CLASS C AND D PATCHES
602301-01	INLET, TYPE A
602306-01	INLET, TYPE B
602401-01	MANHOLE, TYPE A
602406-02	MANHOLE, TYPE A, 72" DIAMETER
602601	PRC FLAT SLAB TOP
602701-01	MANHOLE STEPS
604001-02	FRAME AND LIDS, TYPE 1
604006-02	FRAME AND GRATE, TYPE 3
604036-01	GRATE, TYPE 8
606001-02	CONC. CURB TYPE B AND COMB. CONCRETE CURB AND GUTTER
701501-03	URBAN LANE CLOSURE, 2L, 2W, UNDIVIDED
701801-03	LANE CLOSURE, MULTILANE 1W OR 2W CROSSWALK OR SIDEWALK CLOSURE
702001-06	TRAFFIC CONTROL DEVICES
878001-04	CONCRETE FOUNDATION DETAILS
880006	TRAFFIC SIGNAL MOUNTING DETAILS
886001	DETECTOR LOOP INSTALLATIONS
886006	TYPICAL LAYOUT FOR DETECTION LOOPS
BLR 25	TYPE 1A BARRICADE FOR NON-NHS ROUTES

STATE OF ILLINOIS
DEPARTMENT OF TRANSPORTATION
**PLANS FOR PROPOSED
FEDERAL AID
STREET IMPROVEMENT**
VILLAGE OF RANTOUL
LON DRIVE. - F.A.U. 7082
SECTION: 01-00088-00-WR
CHAMPAIGN COUNTY
PROJECT NO. M-5059(011)
C-95-056-01



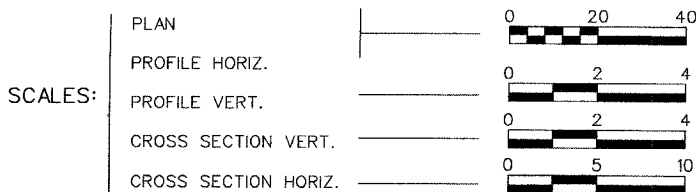
LOCATION INDICATED THUS:



END SECTION
STA 17+69

BEGIN SECTION
STA 9+42

FOR JOINT UTILITY INFORMATION
CALL TOLL FREE 1-800-892-0123



FUNCTIONAL CLASSIFICATION - LOCAL ROAD ADT = 1150

SCALE: 1" = 500'

LENGTH OF PROJECT - LON DRIVE = 827 FEET (0.16 MILES)



Ellen B. Hedrick 12-9-03
ELLEN B. HEDRICK, PROJECT ENGINEER
ILLINOIS REGISTERED PROFESSIONAL ENGINEER NUMBER 062-049131
LICENSE EXPIRES 11-30-07

APPROVED 12-12-2005
Greg Hazel
GREG HAZEL, DIRECTOR OF PUBLIC WORKS, VILLAGE OF RANTOUL

APPROVED 12-12-2005
Neal Williams
NEAL WILLIAMS, MAYOR, VILLAGE OF RANTOUL

PASSED 12-27-2005
D.J. St...
DISTRICT FIVE ENGINEER OF LOCAL ROADS & STREETS

RELEASING FOR BID BASED ON LIMITED REVIEW Dec 27-2005
J. ...
DEPUTY DIRECTOR OF HIGHWAYS, REGION THREE ENGINEER

STATE OF ILLINOIS
DEPARTMENT OF TRANSPORTATION

Sodemann and Associates, Inc.
340 NORTH NEIL STREET
POST OFFICE BOX 557
CHAMPAIGN, ILLINOIS 61824-0557
TEL 217 352-7688 FAX 217 352-7922
ENGINEERING / ANALYSIS / MANAGEMENT



SUMMARY OF QUANTITIES

SECTION	COUNTY	TOTAL SHEETS	SHEET NO.
01-00088-00-WR	CHAMPAIGN	21	2
STA	TO STA		
F.H.W.A. REC.	ILLINOIS	PROJECT	

CODE NO.	ITEM	UNIT	QUANTITY <i>1000</i>
20100110	TREE REMOVAL 6-15	UNIT	34.0
20200100	EARTH EXCAVATION	CU YD	82.0
20400800	FURNISHED EXCAVATION	CU YD	80.0
20800150	TRENCH BACKFILL	CU YD	531.0
21101505	TOPSOIL EXCAVATION AND PLACEMENT	CU YD	151.0
25000100	SEEDING, CLASS 1	ACRE	0.5
25000400	NITROGEN FERTILIZER NUTRIENT	POUND	45.0
25000500	PHOSPHOROUS FERTILIZER NUTRIENT	POUND	45.0
25000600	POTASSIUM FERTILIZER NUTRIENT	POUND	45.0
25100115	MULCH, METHOD 2	ACRE	0.5
25200200	SUPPLEMENTAL WATERING	UNIT	51.0
35400100	PCC BASE COURSE WIDENING 6"	SQ YD	51.0
X3550300	BITUMINOUS BASE COURSE SUPERPAVE 6 1/2"	SQ YD	200.0
40200800	AGGREGATE SURFACE COURSE, TYPE B	TON	50.0
40600100	BITUMINOUS MATERIALS (PRIME COAT)	GALLON	374.0
40600300	AGGREGATE (PRIME COAT)	TON	10.0
X4066414	BIT. CONC. SURFACE CRSE SUPERPAVE C.N. 50	TON	261.0
X4066765	LEVELING BINDER (MACH METH), SUPERPAVE, N 50	TON	351.0
40600980	BITUMINOUS SURFACE REMOVAL - BUTT JOINT	SQ YD	398.0
40600990	TEMPORARY RAMPS	SQ YD	70.0
42001300	PROTECTIVE COAT	SQ YD	282.0
42300200	PCC DRIVEWAY PAVEMENT, 6"	SQ YD	394.0
42300400	PCC DRIVEWAY PAVEMENT, 8"	SQ YD	34.0
42400200	PCC SIDEWALKS, 5"	SQ FT	4,782.0
44000100	PAVEMENT REMOVAL	SQ YD	829.0
44000200	DRIVEWAY PAVEMENT REMOVAL	SQ YD	322.0
44000500	COMBINATION CURB AND GUTTER REMOVAL	FOOT	239.0
44000600	SIDEWALK REMOVAL	SQ FT	311.0
44201717	CLASS D PATCHES, TYPE II, 6 INCH	SQ YD	117.0
44201721	CLASS D PATCHES, TYPE III, 6 INCH	SQ YD	50.0
44201723	CLASS D PATCHES, TYPE IV, 6 INCH	SQ YD	167.0
44300300	AREA REFL. CRACK CONTROL TREATMENT, SYSTEM A	SQ YD	2,365.0
550A0050	STORM SEWERS, CLASS A, TYPE 1 12"	FOOT	270.0
550A0190	STORM SEWERS, CLASS A, TYPE 1 48"	FOOT	51.0
550A0430	STORM SEWERS, CLASS A, TYPE 2 30"	FOOT	716.0
550A2580	STORM SEWERS, RUBBER GASKET, CLASS A, TYPE 2 30"	FOOT	50.0
55100400	STORM SEWER REMOVAL 10"	FOOT	37.0
55100500	STORM SEWER REMOVAL 12"	FOOT	28.0
56400800	FIRE HYDRANT AND VALVE TO BE MOVED	EACH	1.0
60218500	MANHOLES, TYPE A, 4'-DIA, TYPE 3 FRAME AND GRATE	EACH	1.0

CODE NO.	ITEM	UNIT	QUANTITY <i>1000</i>
60221100	MANHOLES, TYPE A, 5'-DIA, TYPE 1 FRAME, CLOSED LID	EACH	4.0
60223800	MANHOLES, TYPE A, 6'-DIA, TYPE 1, FRAME, CLOSED LID	EACH	1.0
60223810	MANHOLES, TYPE A, 6'-DIA, TYPE 3 FRAME AND GRATE	EACH	2.0
60228400	MANHOLES, SPECIAL	EACH	1.0
60235700	INLETS, TYPE A, TYPE 3 FRAME AND GRATE	EACH	5.0
60236200	INLETS, TYPE A, TYPE 8 GRATE	EACH	1.0
60240220	INLETS, TYPE B, TYPE 3 FRAME AND GRATE	EACH	3.0
60255500	MANHOLES TO BE ADJUSTED	EACH	4.0
60260300	INLET TO BE ADJUSTED WITH NEW TYPE 1 FR. OPEN LID	EACH	1.0
60500040	REMOVING MANHOLES	EACH	3.0
60500060	REMOVING INLETS	EACH	5.0
60605000	COMB. CONCRETE CURB AND GUTTER, TYPE B-6.24	FOOT	1,894.0
67100100	MOBILIZATION	L SUM	1.0
70102620	TRAFFIC CONTROL AND PROTECTION, STD 701501	L SUM	1.0
70102640	TRAFFIC CONTROL AND PROTECTION, STD 701801	L SUM	1.0
70103815	TRAFFIC CONTROL SURVEILLANCE	CAL DA	5.0
* 78001110	PAINT PAVEMENT MARKING - LINE 4"	FOOT	220.0
* 78001130	PAINT PAVEMENT MARKING - LINE 6"	FOOT	155.0
* 78001180	PAINT PAVEMENT MARKING - LINE 24"	FOOT	45.0
* 81012600	CONDUIT IN TRENCH, 2" DIA., PVC	FOOT	19.0
* 81500200	TRENCH AND BACKFILL FOR ELECTRICAL WORK	FOOT	19.0
* 87301225	ELECTRIC CABLE IN CONDUIT, SIGNAL No 14 3C	FOOT	170.0
* 87301245	ELECTRIC CABLE IN CONDUIT, SIGNAL No 14 5C	FOOT	340.0
* 87301255	ELECTRIC CABLE IN CONDUIT, SIGNAL No. 14 7C	FOOT	170.0
* 87800100	CONCRETE FOUNDATION, TYPE A	FOOT	6.0
* 88600100	DETECTOR LOOP, TYPE 1	FOOT	141.0
89501150	RELOCATE EXISTING TRAFFIC SIGNAL POST	EACH	2.0
89502300	REMOVE ELECTRIC CABLE FROM CONDUIT	FOOT	680.0
89502385	REMOVE EXISTING CONCRETE FOUNDATION	EACH	2.0
Z0051500	REMOVING AND RESETTING STREET SIGNS	EACH	2.0

* SPECIALTY ITEMS

SECTION	COUNTY	TOTAL SHEETS	SHEET NO.
01-00088-00-WR	CHAMPAIGN	21	3
STA.	TO STA.		
F.H.W.A. REG.	ILLINOIS	PROJECT	

GENERAL NOTES

ALL ELEVATIONS SHOWN ARE REFERRED TO THE U.S.G.S. DATUM.

WHEREVER IN THE PLANS OR SPECIFICATIONS THE TERM STANDARD SPECIFICATIONS IS USED, IT SHALL BE UNDERSTOOD BY THE CONTRACTOR TO MEAN THE STANDARD SPECIFICATIONS FOR ROAD AND BRIDGE CONSTRUCTION AS PREPARED BY THE DEPARTMENT OF TRANSPORTATION OF THE STATE OF ILLINOIS AND ADOPTED JANUARY 1, 2002.

ANY REFERENCE STANDARDS THROUGHOUT THE PLANS SHALL BE INTERPRETED TO BE THE LATEST STANDARDS OF THE DEPARTMENT AS SHOWN ON THE SCHEDULE OF STANDARD DRAWINGS ON THE COVER SHEET.

ALL STREET RETURNS SHALL HAVE RADII MEASURED TO THE EDGE OF PAVEMENT UNLESS OTHERWISE NOTED ON THE PLANS.

ENGLISH UNITS OF MEASUREMENT SHALL GOVERN OVER AND SUPERSEDE ANY METRIC UNITS SHOWN IN THIS CONTRACT. WHERE INCLUDED, METRIC UNITS ARE FOR INFORMATION ONLY.

CALL J.U.L.L.E. 1-800-892-0123 FOR UNDERGROUND UTILITY LOCATION MARKING PRIOR TO START OF CONSTRUCTION.

UTILITY COMPANIES MAY BE ADJUSTING THEIR FACILITIES AT THE TIME OF CONSTRUCTION OF THIS PROJECT. THE CONTRACTOR SHALL COOPERATE WITH THOSE ORGANIZATIONS WHILE THEY PERFORM THEIR WORK.

DURING CONSTRUCTION THE CONTRACTOR MAY ENCOUNTER VARIOUS TYPES OF UNDERGROUND UTILITIES THAT MAY NOT BE SHOWN ON THE PLANS. THE CONTRACTOR SHALL COOPERATE WITH THE ENGINEER AND THE OWNER OF THE UTILITY WHILE THE UTILITY COMPANY ADJUSTS THEIR FACILITIES IF NECESSARY. IT IS DETERMINED THAT THE UTILITY HAS BEEN ABANDONED, THE CONTRACTOR WILL BE DIRECTED TO REMOVE THE UTILITY LINES THAT CONFLICT WITH HIS WORK AND CAP OR PLUG THE LINES AS DIRECTED BY THE ENGINEER. THIS WORK WILL NOT BE PAID FOR SEPARATELY AND WILL BE CONSIDERED AS INCIDENTAL.

THE CONTRACTOR SHALL NOTIFY ALL UTILITY COMPANIES 48 HOURS PRIOR TO EXCAVATION OPERATIONS.

CONTRACTOR SHALL CAREFULLY PROTECT ANY TREES OR SHRUBS NOT INCLUDED IN THE CONTRACT FOR REMOVAL. SNOW FENCE SHALL BE ERRECTED TWO FEET FROM TREES AND SHRUBS TO REMAIN, THAT ARE IMMEDIATELY ADJACENT TO THE WORK, FOR PROTECTION DURING CLEARING AND CONSTRUCTION OPERATIONS. COST OF THIS WORK SHALL BE CONSIDERED AS INCIDENTAL AND NO ADDITIONAL COMPENSATION WILL BE ALLOWED.

SHRUBS, BUSHES, AND STUMPS THAT INTERFERE WITH THE CONSTRUCTION OPERATIONS SHALL BE REMOVED AS SHOWN IN THE PLANS AND AS DIRECTED BY THE ENGINEER. COST OF REMOVAL OF SHRUBS, BUSHES, OR STUMPS SHALL BE INCLUDED IN THE ITEM EARTH EXCAVATION WITH NO ADDITIONAL COMPENSATION ALLOWED.

THE EXCAVATION FOR THIS PROJECT IS CLASSIFIED AS TOPSOIL EXCAVATION AND PLACEMENT, EARTH EXCAVATION AND FURNISHED EXCAVATION IN ACCORDANCE WITH THE STANDARD SPECIFICATIONS AND AS PROVIDED IN THE CONTRACT SPECIFICATIONS. THE EARTH EXCAVATION SHALL INCLUDE THE REMOVAL OF THE EARTH AND UNCLASSIFIED MATERIALS. THE CONTRACTOR SHALL NOTIFY ALL UTILITY COMPANIES 48 HOURS PRIOR TO CONSTRUCTION.

GRADING SHALL BE DONE BY HAND AROUND LIGHT POLES, UTILITY POLES, SIGN POSTS, SHRUBS, TREES AND OTHER NATURAL OR MAN-MADE OBJECTS WHERE SHALLOW FILLS OR CUTS ARE ADJACENT TO THESE ITEMS. IT IS THE INTENT THAT ITEMS THAT DO NOT NEED TO BE DISTURBED BY THE CONSTRUCTION SHALL BE PRESERVED. THE DECISION AS TO ITEMS TO REMAIN IN PLACE SHALL BE AS DIRECTED BY THE ENGINEER. THIS WORK WILL NOT BE PAID FOR SEPARATELY, BUT SHALL BE CONSIDERED INCLUDED IN THE CONTRACT UNIT PRICE PER CUBIC YARD OF EARTH EXCAVATION AND NO ADDITIONAL COMPENSATION SHALL BE ALLOWED.

ALL DEBRIS AND EXCESS MATERIAL (BROKEN CONCRETE, PIPES, WASTE EXCAVATION, ETC.) SHALL BE DISPOSED OF OUTSIDE THE LIMITS OF THE RIGHT-OF-WAY IN ACCORDANCE WITH ARTICLE 202.03 OF THE STANDARD SPECIFICATIONS.

ALL TRENCHES BELOW OR WITHIN TWO FEET OF THE PROPOSED PAVEMENT, OR DRIVEWAY SHALL BE BACKFILLED WITH TRENCH BACKFILL IN ACCORDANCE WITH THE STANDARD SPECIFICATIONS.

SEEDING SHALL BE DONE AT LOCATIONS WHERE THE EXISTING EARTH HAS BEEN DISTURBED, AND AT LOCATIONS DIRECTED BY THE ENGINEER. ANY EXISTING AREAS OUTSIDE THE LIMITS OF CONSTRUCTION DAMAGED BY THE CONTRACTOR SHALL BE SEEDED AT HIS OWN EXPENSE AND NO ADDITIONAL COMPENSATION WILL BE ALLOWED.

EXISTING CONCRETE AND BITUMINOUS CONCRETE PAVEMENT IN WHICH THE TOP SURFACE IS TO BE BUTT JOINED TO THE PROPOSED WORK SHALL BE SO JOINED THROUGH FULL DEPTH SAW CUT JOINTS. THIS WORK SHALL BE CONSIDERED AS INCIDENTAL TO THE CONTRACT.

WHEN REQUIRED BY ARTICLE 420.21, A PROTECTIVE COAT SHALL BE APPLIED TO ALL NEW CONCRETE SURFACES.

BEFORE ORDERING STORM SEWERS, INLETS AND MANHOLES, THE CONTRACTOR SHALL CONSULT WITH THE ENGINEER AS TO THE EXACT LENGTH AND QUANTITY REQUIRED.

AT LOCATIONS INDICATED ON THE PLANS, EXISTING STORM SEWERS ARE TO BE CONNECTED INTO PROPOSED STORM SEWERS AND MANHOLES. THESE CONNECTIONS SHALL BE MADE IN A WORKMANLIKE MANNER AND MASONRY CONSTRUCTED AROUND THEM SO AS TO PREVENT LEAKAGE. THIS WORK WILL NOT BE PAID FOR SEPARATELY, BUT SHALL BE CONSIDERED AS INCIDENTAL TO STORM SEWERS OF THE SIZE AND TYPE SPECIFIED AND NO ADDITIONAL COMPENSATION WILL BE ALLOWED. IF CONCRETE COLLARS ARE CALLED FOR AT SOME LOCATIONS, THEY WILL BE CONSTRUCTED AND PAID FOR AS SHOWN ON THE DETAILS.

THE EXISTING STORM SEWERS, SANITARY SEWERS, AND PIPE CULVERTS SHOWN TO BE REMOVED ON THE PLANS SHALL BE DONE IN ACCORDANCE WITH SECTION 551 OF THE STANDARD SPECIFICATIONS EXCEPT THAT SALVAGING OF THE PIPE WILL NOT BE REQUIRED. THE EXISTING PIPES THAT ARE REMOVED THAT ARE WITHIN THE LIMITS OF THE PROPOSED TRENCHES FOR PIPE CULVERTS OR STORM SEWERS WILL NOT BE MEASURED FOR PAYMENT AND SHOULD BE CONSIDERED IN THE COST OF EXCAVATION FOR NEW PIPE CULVERTS OR STORM SEWERS.

ALL SALVAGEABLE FRAMES AND GRATES WHICH ARE NOT INCORPORATED IN THE WORK SHALL BECOME THE PROPERTY OF THE VILLAGE. THE CONTRACTORS BID PRICE SHOULD REFLECT THE SALVAGE VALUE OF THE ITEMS.

WHERE THE PROPOSED COMBINATION CONCRETE CURB AND GUTTER, JOINS THE EXISTING CURB AND GUTTER, THERE MAY BE A TRANSITION IN THE CURB AND GUTTER. THIS WORK WILL BE CONSIDERED INCIDENTAL TO THE COMBINATION CONCRETE CURB AND GUTTER.

CONCRETE CURB AND GUTTER SHALL BE SAWS AT A MINIMUM OF 15 FOOT SPACING. ALL SAWS JOINTS SHALL BE FILLED WITH NP 1 SEALER.

THE EXISTING TRAFFIC SIGNS AND DELINEATORS WHICH INTERFERE WITH THE CONSTRUCTION OPERATIONS SHALL BE REMOVED AND RESET AS DIRECTED BY THE ENGINEER. THE COST FOR DOING THIS WORK WILL BE CONSIDERED INCIDENTAL TO THE CONTRACT AND NO ADDITIONAL COMPENSATION WILL BE ALLOWED.

FUNCTIONAL CLASSIFICATION - LOCAL ROAD

ADT (2005) - 1150

PAVEMENT DESIGN - 3" BITUMINOUS OVERLAY

BITUMINOUS MIXTURE REQUIREMENTS:
THE FOLLOWING MIXTURE REQUIREMENTS ARE APPLICABLE FOR THIS PROJECT.

LOCATION	MANLINE	MANLINE	MANLINE
MIXTURE USE(S):	SURFACE	LEVEL BINDER	BIT. BASE COURSE & CLASS D PATCH
AC/PG:	PG 64-22	PG 64-22	PG 64-22
RAP %:	15	25	25
DESIGN AIR VOIDS:	4.0% N _{DES} - 50	4.0% N _{DES} - 50	4.0% N _{DES} - 50
MIXTURE COMPOSITION: (GRADATION MIXTURE)	IL 9.5	IL 9.5	IL 19.0
FRICTION AGGREGATE:	MIX C	MIX C	N.A.

DESIGN DATA

LON DRIVE

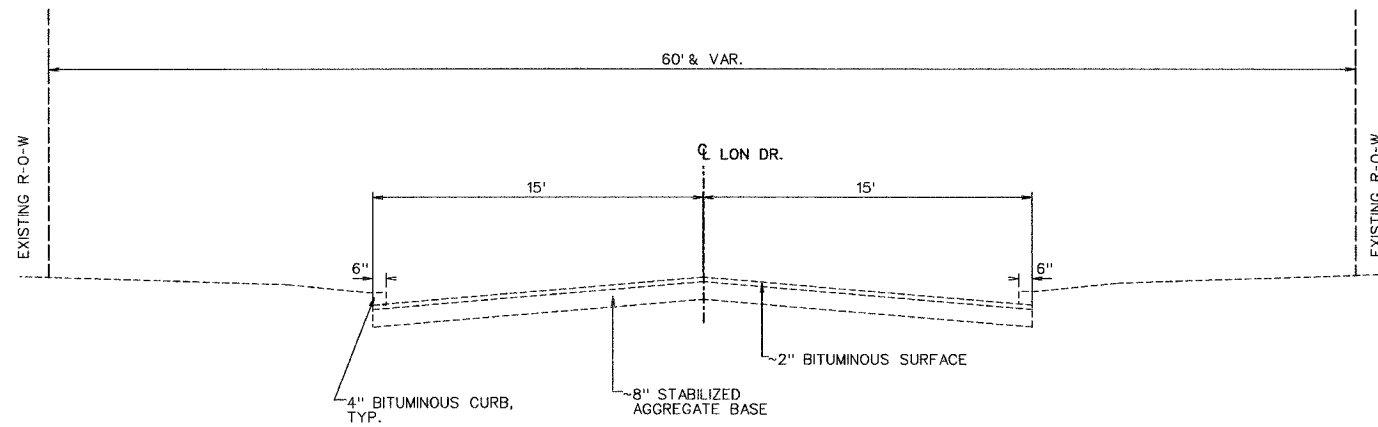
DESIGN TRAFFIC
2005 ADT - 1,150
2015 ADT - 1,150
2025 ADT - 1,150
P.V. - 88.0% - 1,012
S.U. - 7.0% - 81
M.U. - 5.0% - 57
CLASS III STREET (FLEXIBLE)
MINOR COLLECTOR
DESIGN PERIOD - 20 YEARS
T.F. - 0.52
IBR-2 S.S.R. - POOR (ASSUMED)
PROPOSED PAVEMENT
1/2" BIT. SURFACE
1/2" LEVEL BINDER
6 1/2" BIT. BASE COURSE

LEGEND

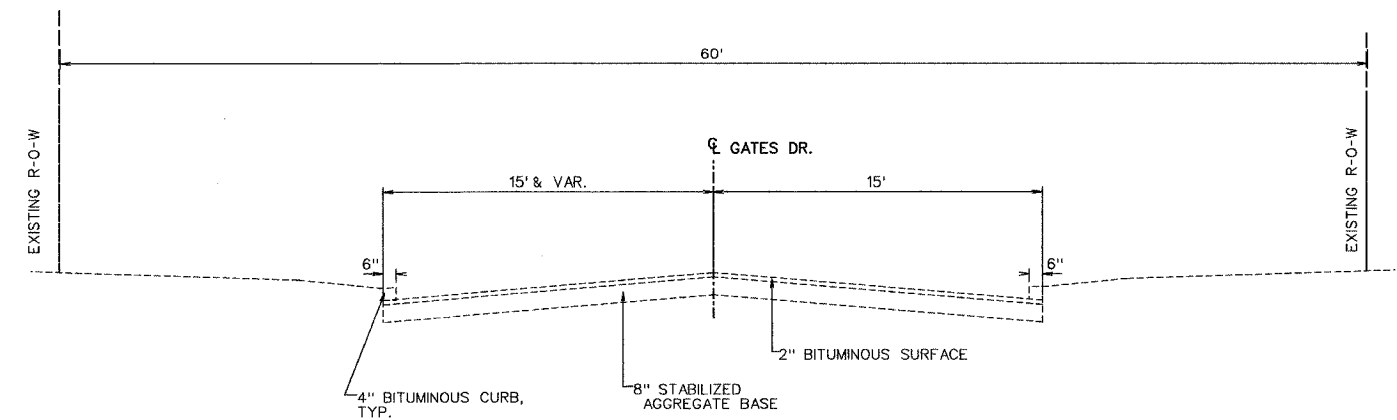
EXISTING	PROPOSED	EXISTING	PROPOSED
—W—	WATER MAIN	◆ ^{TS}	TRAVERSE STATION
—G—	GAS MAIN	●	SOIL BORE
—E—	ELECTRICAL LINE	△	SURVEY POINT
—T—	TELEPHONE LINE	◇	MONUMENT
—FO—	FIBEROPTIC LINE	○ ^{IP}	IRON PIPE MONUMENT
—WS—	WATER SERVICE	—	RIGHT OF WAY LINE
—GS—	GAS SERVICE	-----	CONSTRUCTION LIMIT LINE
—C-TV—	CABLE TELEVISION	////	TEMPORARY EASEMENT
—SAN.S.—	SANITARY SEWER	⊠	RIGHT OF WAY MARKER
→ ST.S. →	STORM SEWER	⊠	TRAFFIC SIGNAL CONTROL
⊠	CATCH BASIN OR INLET	⊠	TRAFFIC SIGNAL
⊠	MANHOLE	⊠	MAST ARM SIGNAL
⊠	TELEPHONE MANHOLE	⊠	JUNCTION BOX
⊠	FIRE HYDRANT	⊠	RR CROSSING GATE
⊠	WATER SHUTOFF	⊠	RR CROSSBUCK
⊠	VALVE	⊠	RR CROSSING SIGNAL
⊠	VALVE VAULT	⊠	STREET SIGN
⊠	TANK FILLER CAP	⊠	TRAFFIC SIGN
⊠	INSPECTION WELL	⊠	DELINEATOR
⊠	VENT PIPE	⊠	MAILBOX
⊠	TELEPHONE POLE	⊠	PEDESTAL PAY PHONE
⊠	POWER POLE	⊠	PHONE BOOTH
⊠	POWER & LIGHT POLE	⊠	ORNAMENTAL LIGHT
⊠	POLE WITH TRANSFORMER	⊠	PARKING LOT LIGHT
⊠	STREET LIGHT	⊠	PARKING METER
⊠	CANTILEVER STREET LIGHT	⊠	PARKING BLOCK
⊠	GUY WIRE	⊠	FLAG POLE
⊠	GUY POLE	⊠	GUARD POST OR BOLLARD
⊠	POLE W/METER	⊠	DOWNSPOUT
⊠	HAND HOLE	⊠	CLEANOUT
⊠	TELEPHONE PEDESTAL	⊠	GATE POST
⊠	CABLE TV PEDESTAL	⊠	FENCE POST
⊠	ELECTRICAL PEDESTAL	⊠	FENCE LINE
⊠	ELECTRICAL METER	⊠	STUMP
⊠	GAS METER	⊠	BUSH
⊠	WATER METER	⊠	CONIFEROUS TREE
⊠	UTILITY WARNING SIGN	⊠	DECIDUOUS TREE
REMOVAL			
INDICATES ITEM TO BE REMOVED (R)		PAVEMENT & CURB REMOVAL	
INDICATES ITEM TO BE ADJUSTED (A)		BITUMINOUS SURFACE REMOVAL, BUTT JOINT 1/2"	
INDICATES ITEMS TO BE RELOCATED (REL)		SIDEWALK REMOVAL	
CLASS D PATCHING, 6"		DRIVEWAY PAVEMENT REMOVAL	
PROPOSED			
P. C. C. DRIVEWAY PAVEMENT		BITUMINOUS SURFACE BUTT JOINT	
P. C. C. SIDEWALK		PCC BASE COURSE WIDENING, 6"	
		BIT. CONCRETE BASE COURSE, 6 1/2" SUPERPAVE	

SECTION	COUNTY	TOTAL SHEETS	SHEET NO.
01-00088-00-WR	CHAMPAIGN	21	4
STA.	TO STA.		
F.H.W.A. REG.	ILLINOIS	PROJECT	

EXISTING TYPICAL SECTION

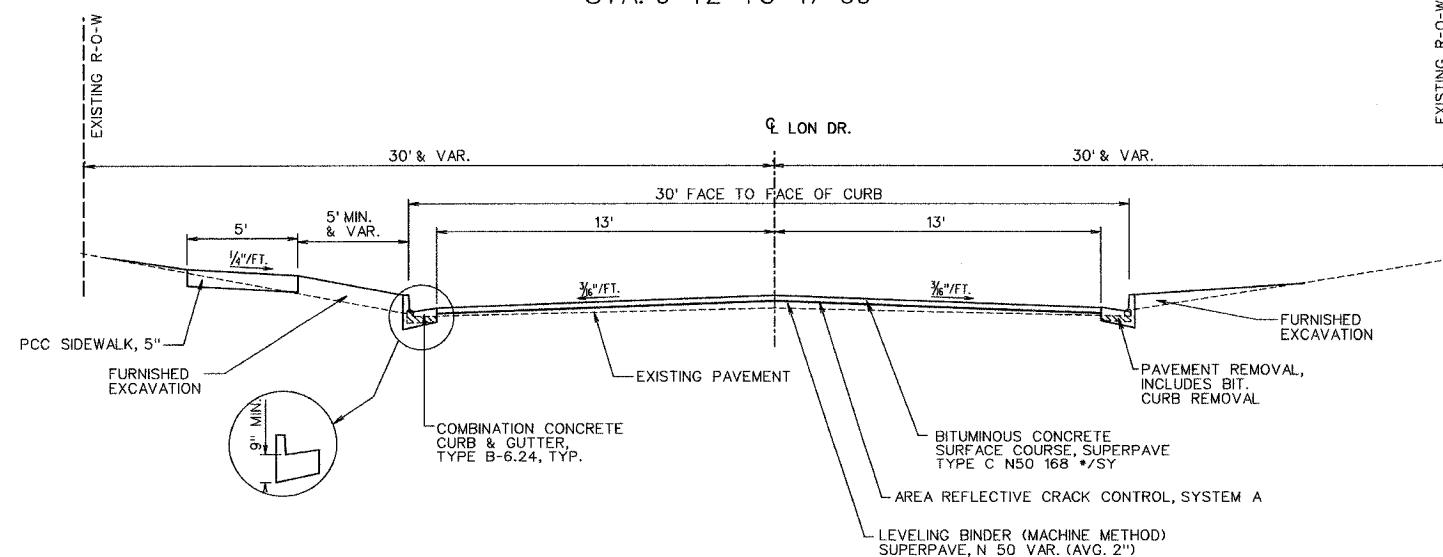


EXISTING TYPICAL SECTION



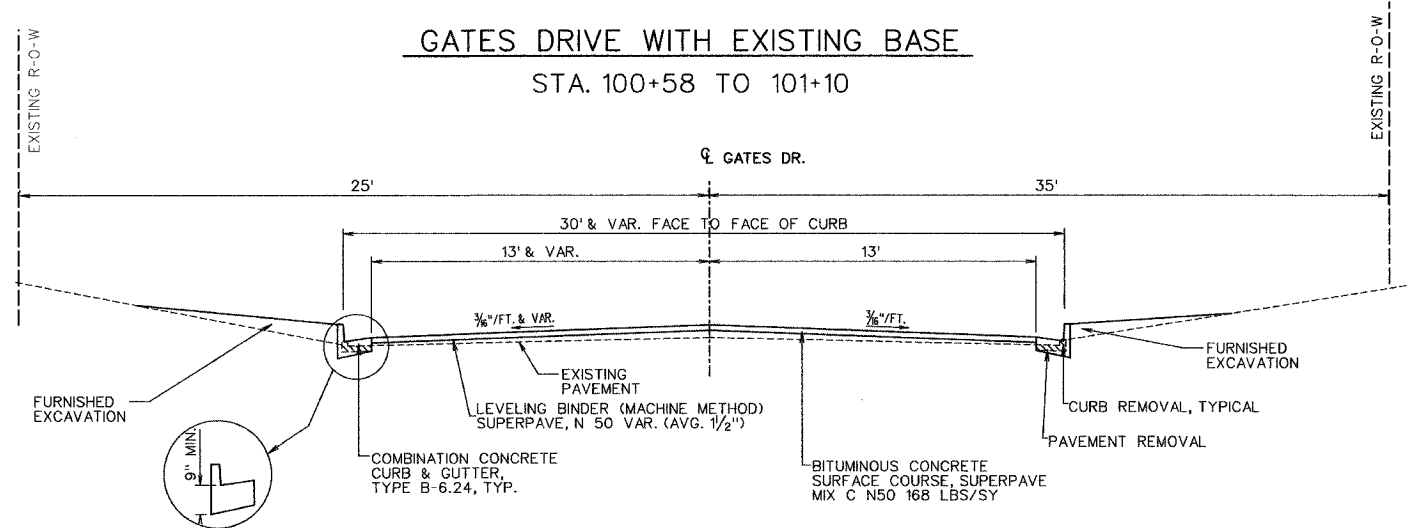
PROPOSED TYPICAL SECTION

STA. 9+42 TO 17+69

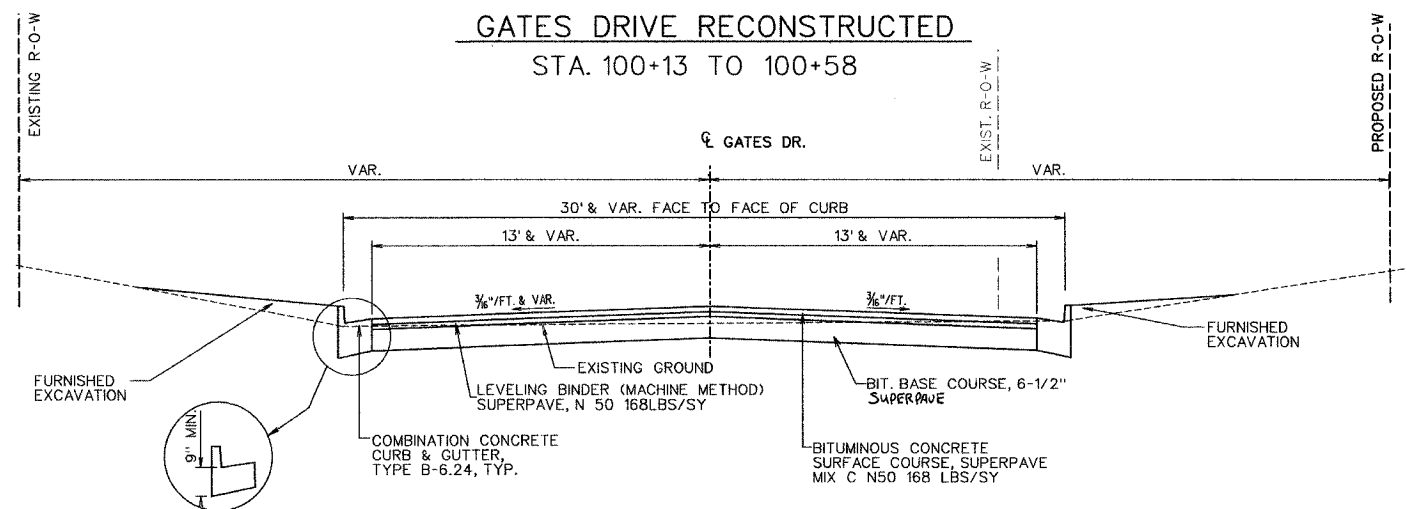


PROPOSED TYPICAL SECTIONS

GATES DRIVE WITH EXISTING BASE
STA. 100+58 TO 101+10



GATES DRIVE RECONSTRUCTED
STA. 100+13 TO 100+58



SECTION	COUNTY	TOTAL SHEETS	SHEET NO.
01-00088-00-WR	CHAMPAIGN	21	5
STA.	TO STA.		
F.H.W.A. REG.	ILLINOIS	PROJECT	

SCHEDULES OF QUANTITIES

EARTHWORK					
LOCATION	TOPSOIL EXCAVATION (CU YD)	TOPSOIL PLACEMENT (CU YD)	FURNISHED EXCAVATION** (CU YD)	EARTH EXCAVATION (CU YD)	EMBANKMENT*** (CU YD)
LON DRIVE	216.0	138.0	111.0	54.0	155.0
GATES DRIVE	25.0	13.0	-31.0	28.0	4.0
TOTALS	241.0	151.0	80.0	82.0	159.0

* PLAN QUANTITY FOR TOPSOIL EXCAVATION AND PLACEMENT CUT = TOPSOIL EXCAVATION
 ** SEE SPECIAL PROVISION FOR FURNISHED EXCAVATION EMBANKMENT = FILL * 1.30 (SHRINKAGE FACTOR)
 *** EMBANKMENT IS NOT A PAY ITEM BORROW - (FILL - (CUT/1.30)) * 1.30 - FURNISHED EXCAVATION

STORM SEWERS, CLASS A, TYPE 1 12"					TRENCH BACKFILL
STATION	TO	STATION	FOOT	CU YD	
21.3' LT	11-65	13.4' LT	11-68	8.0	0.0
28.7' RT	11-09	17.0' RT	11-60	55.0	17.1
17.0' RT	11-60	10.8' LT	11-67	35.1	5.9
14.0' RT	12-53	16.3' LT	12-53	27.3	5.5
14.1' RT	13-56	16.5' LT	13-54	27.0	5.5
15.9' RT	14-52	18.4' LT	14-52	32.9	6.6
12.9' LT	16-00	17.4' LT	16-00	4.5	0.3
13.0' RT	15-98	11.4' LT	16-00	24.5	4.6
14.5' RT	15-72	14.1' RT	15-97	25.6	4.4
21.5' RT	15-72	16.0' RT	15-72	5.5	0.9
14.2' LT	15-73	12.2' LT	15-99	24.1	4.7
TOTALS				269.5	55.5

STORM SEWERS, CLASS A, TYPE 2 30"					TRENCH BACKFILL
STATION	TO	STATION	FOOT	CU YD	
23.7' RT	9-48	20.0' RT	9-54	8.0	0.0
18.1' RT	9-58	6.2' LT	10-17	65.0	36.9
15.9' LT	10-68	10.6' LT	11-65	92.5	52.6
10.8' LT	11-70	16.3' LT	12-53	80.4	35.9
16.3' LT	12-53	16.5' LT	13-54	103.6	41.3
16.5' LT	13-54	18.4' LT	14-49	88.7	47.4
18.4' LT	14-52	19.6' LT	16-00	143.5	81.2
19.2' LT	16-03	16.8' RT	17-26	125.8	132.8
18.3' RT	17-29	21.3' RT	17-36	8.0	0.0
TOTALS				715.5	428.1

STORM SEWERS, RUBBER GASKET, CLASS A, TYPE 2 30"					TRENCH BACKFILL
STATION	TO	STATION	FOOT	CU YD	
6.24' LT	10-17	15.9' LT	10-68	50.0	28.1
TOTAL				50.0	28.1

STORM SEWERS, CLASS A TYPE 1, 48"					TRENCH BACKFILL
STATION	TO	STATION	FOOT	CU YD	
13-57	LT	13-76	RT	42.4	4.1
200+11	RT	200+20		8.0	0.0
TOTAL				50.4	4.1

INLETS, TYPE A, TYPE 3 FRAME & GRATE		
STATION		EACH
28.7' RT	11-09	1.0
14.0' RT	12-53	1.0
14.0' RT	13-54	1.0
17.1' RT	14-52	1.0
14.3' LT	15-72	1.0
TOTAL		5.0

INLETS, TYPE A, TYPE 8 GRATE		
STATION		EACH
22.5' RT	15-72	1.0
TOTAL		1.0

INLETS, TYPE B, TYPE 3, FRAME & GRATE		
STATION		EACH
17.0' RT	11-60	1.0
14.4' LT	15-72	1.0
14.5' RT	15-98	1.0
TOTAL		3.0

MANHOLES, TYPE A, 5' DIA., TYPE 1 FRAME, CLOSED LID		
STATION		EACH
19.2' RT	9-56	1.0
17.0' LT	14-51	1.0
19.4' LT	16-00	1.0
18.0' RT	17-28	1.0
TOTAL		4.0

MANHOLES, TYPE A, 4' DIA., TYPE 3 FRAME & GRATE		
STATION		EACH
12.9' LT	16-00	1.0
TOTAL		1.0

MANHOLES, TYPE A, 6' DIA., TYPE 3 FRAME & GRATE		
STATION		EACH
10.8' LT	11-68	1.0
16.3' LT	12-53	1.0
TOTAL		2.0

MANHOLES, TYPE A, 6' DIA., TYPE 1 FRAME, CLOSED LID		
STATION		EACH
20.5' RT	13-77	1.0
TOTAL		1.0

MANHOLES, SPECIAL		
STATION		EACH
16.5' LT	13-57	1.0
TOTAL		1.0

BITUMINOUS BASE COURSE, 6 1/2"	
LOCATION	SQ YD
GATES DRIVE INTERSECTION	200.0
TOTAL	200.0

PCC BASE COURSE WIDENING, 6"		
STATION TO STATION		SQ YD
LT 9+75	9+97	1.5
LT 11+17	12+03	24.5
LT 17+35	17+69	14.0
RT 17+49	17+69	11.0
TOTAL		51.0

PCC DRIVEWAY PAVEMENT 6"		
STATION		SQ YD
RT 10+30		114.7
LT 10+93		11.6
LT 10+93		39.5
RT 100+50		100.2
RT 100+87		30.2
RT 12+34		20.8
RT 13+08		35.2
RT 15-50		41.2
TOTAL		393.4

PCC DRIVEWAY PAVEMENT 8"		
STATION		SQ YD
LT 14+02		11.8
RT 16-60		22.2
TOTAL		34.0

PAINT PAVEMENT MARKING LINE 4"				
STATION TO STATION		TYPE	COLOR	FOOT
CL 9+42	17-69	SKIP DASH	YELLOW	220.0
TOTAL				220.0

PAINT PAVEMENT MARKING LINE 6"			
STATION / LOCATION		TYPE	FOOT
9+43	GATES DRIVE	CROSSWALK	28.0
9+48	GATES DRIVE	CROSSWALK	29.0
17+55	LON	CROSSWALK	43.0
17+62	LON	CROSSWALK	55.0
TOTAL			155.0

PAINT PAVEMENT MARKING LINE 24"			
STATION / LOCATION		TYPE	FOOT
RT 17-50	LON DRIVE	STOP BAR	17.0
LT 200+17	CAROLINA DR.	STOP BAR	15.0
LT 100+34	GATES DR.	STOP BAR	13.0
TOTAL			45.0

PCC SIDEWALK, 5"		
STATION TO STATION		SQ FT
RT 8+31	RT 9+48	611.6
LT 9+42	LT 17-69	4045.9
RT 17-58	RT 17-69	124.1
TOTAL		4,781.6

AREA REFLECTIVE CRACK CONTROL SYSTEM A		
STATION TO STATION		SQ YD
9+12	17+09	2,365.0
TOTAL		2,365.0

COMBINATION CONCRETE CURB & GUTTER, TYPE B-6.24			
STATION TO STATION		FOOT	
LT 9+42	LT 17-69	820.2	
RT 9+42	RT 101+10	278.1	
LT 101+10	RT 200+90	391.7	
LT 200+90	RT 17-69	403.3	
TOTAL		1,893.3	

HYDRANT AND VALVE TO BE MOVED		
STATION		EACH
LT 17+47		1.0
TOTAL		1.0

SECTION	COUNTY	TOTAL SHEETS	SHEET NO.
01-00088-00-WR	CHAMPAIGN	21	6
STA.	TO STA.		
F.H.W.A. REG.	ILLINOIS	PROJECT	

SCHEDULES OF QUANTITIES

PAVEMENT REMOVAL	
LOCATION	SQ YD
LT EOP	222.0
RT EOP	167.0
GATES INTERSECTION	440.0
TOTAL	829.0

CURB REMOVAL INCLUDED IN WORK EFFORT AND PRICE OF PAVEMENT REMOVAL

REMOVING MANHOLES		
STATION		EACH
16.5' LT	10+74	1.0
9.7' LT	11+69	1.0
17.2' LT	13+49	1.0
TOTAL		3.0

CLASS D PATCHES 6"				
PATCH NO.	DIMENSIONS	TYPE II	TYPE III	TYPE IV
		>5-<15 SQ YD	>15-<25 SQ YD	>25 SQ YD
①	5' x 8'	5.0		
②	10' x 16'		18.0	
③	90' x 8'			80.0
④	24' x 3'	8.0		
⑤	9' x 5'	5.0		
⑥	20' x 5'	11.0		
⑦	13' x 5'	7.2		
⑧	14' x 5'	7.8		
⑨	13' x 11'		16.0	
⑩	13' x 11'		16.0	
⑪	13' x 10'	14.5		
⑫	13' x 10'	14.5		
⑬	12' x 5'	6.7		
⑭	12' x 5'	6.7		
⑮	9' x 25'			25.0
⑯	16' x 5'	8.9		
⑰	13' x 5'	7.2		
⑱	14' x 5'	7.8		
⑲	12' x 5'	6.7		
⑳	36' x 8'			32.0
㉑	34' x 8'			30.0
TOTALS		117.0	50.0	167.0

DRIVEWAY PAVEMENT REMOVAL	
STATION	SQ YD
RT 10+21	20.4
RT 10+40	31.3
LT 10+93	52.6
RT 12+34	23.4
RT 13+09	49.9
RT 15+50	52.5
RT 16+60	24.2
RT 100+50	41.8
RT 100+87	25.8
TOTAL	322.0

REMOVING INLETS		
STATION		EACH
15.7' RT	11+40	1.0
13.9' RT	13+48	1.0
17.1' RT	14+52	1.0
15.8' RT	15+98	1.0
12.6' LT	16+00	1.0
TOTAL		5.0

STORM SEWER REMOVAL 10 INCH		
STATION	FOOT	TRENCH BACKFILL CU YD
AR 11+57	37.0	10.0
TOTAL	37.0	10.0

SIDEWALK REMOVAL		
STATION	TO STATION	SQ FT
LT 17+57	LT 17+62	134.5
RT 17+56	RT 17+69	176.2
TOTAL		310.7

STORM SEWER REMOVAL 12 INCH		
STATION	FOOT	TRENCH BACKFILL CU YD
AR 13+48	28.0	5.0
TOTAL	28.0	5.0

TREE REMOVAL, 6-15"		
STATION	UNIT	
30.5' RT	11+48	13.0
35' RT	11+56	9.0
25' LT	11+90	12.0
TOTAL		34.0

COMBINATION CURB & GUTTER REMOVAL	
LOCATION	FOOT
LON AT 136 SW	36.0
LON AT 136 SE	36.0
CAROLINA N.	75.0
CAROLINA S.	90.0
TOTAL	239.0

REMOVING & RESETTING STREET SIGNS	
LOCATION	EACH
LON / GATES	1.0
LON / GROVE	1.0
TOTAL	2.0

MANHOLES TO BE ADJUSTED		
STATION	EACH	
16.0' RT	11+60	1.0
9.5' RT	12+42	1.0
7.3' RT	14+06	1.0
34.3' RT	17+67	1.0
TOTAL		4.0

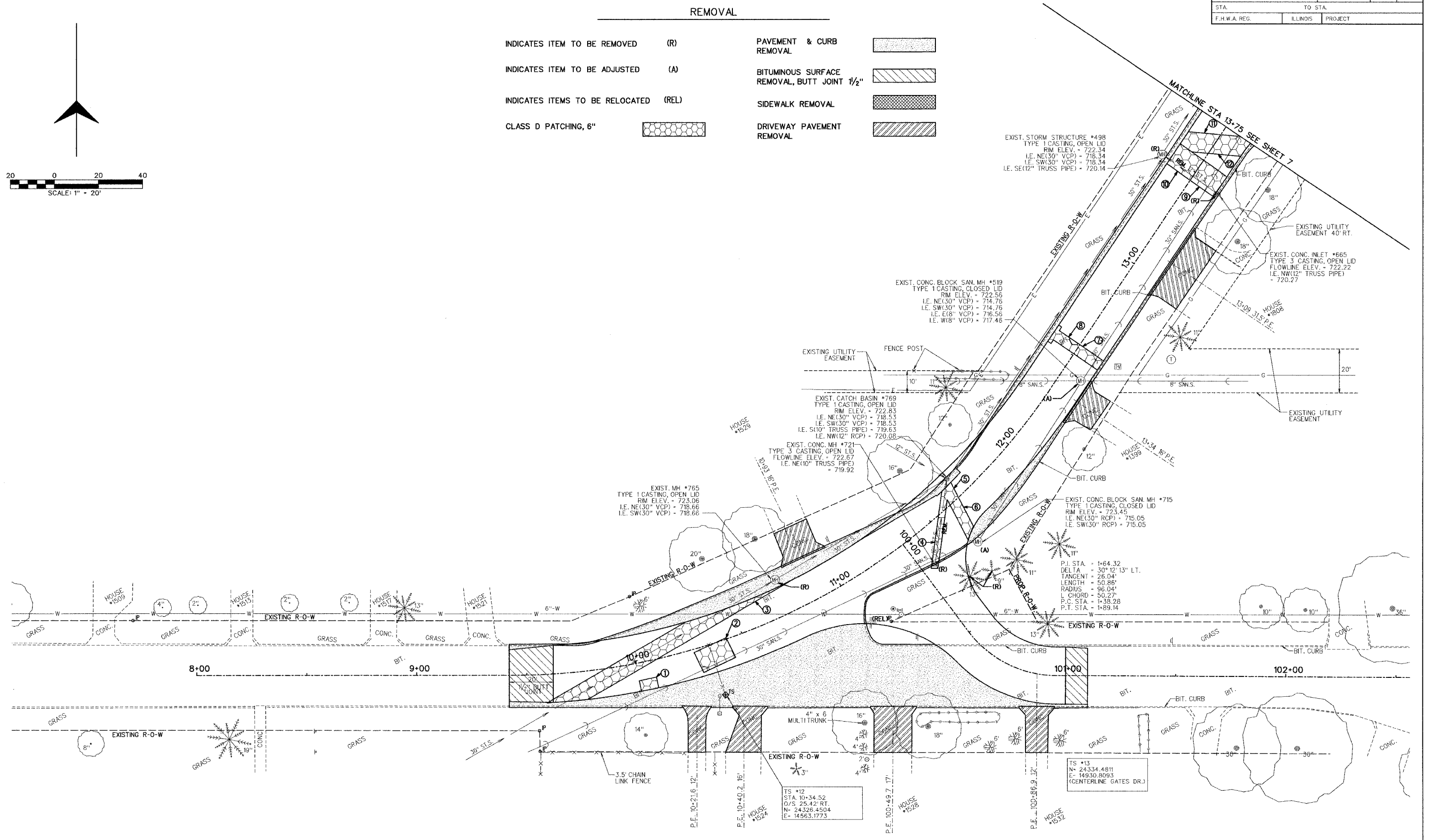
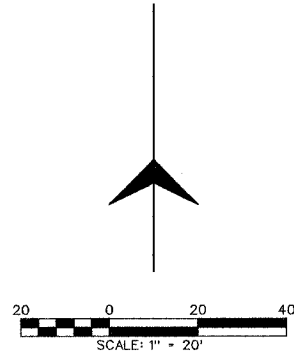
BITUMINOUS SURFACE REMOVAL - BUTT JOINT				TEMPORARY RAMP
STATION	LOCATION	SQ YD	SQ YD	SQ YD
200+67 TO 200+90	CAROLINA	65.7	15.0	
9+42 TO 9+62	W. GATES	56.8	15.0	
101+00 TO 101+10	E. GATES	28.6	6.0	
17+09 TO 17+69	N. LON	246.9	34.0	
TOTAL		398.0	70.0	

INLETS TO BE ADJUSTED WITH NEW TYPE 1 FRAME, OPEN LID		
STATION	EACH	
33.0' RT	13+73	1.0
TOTAL		1.0

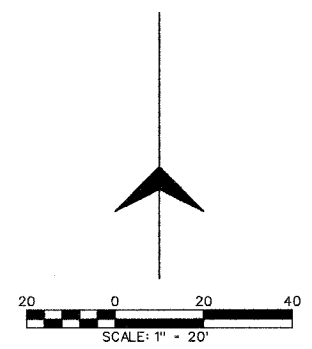
SECTION	COUNTY	TOTAL SHEETS	SHEET NO.
01-00088-00-WR	CHAMPAIGN	21	7
STA.	TO STA.		
F.H.W.A. REG.	ILLINOIS	PROJECT	

REMOVAL

- INDICATES ITEM TO BE REMOVED (R)
- INDICATES ITEM TO BE ADJUSTED (A)
- INDICATES ITEMS TO BE RELOCATED (REL)
- CLASS D PATCHING, 6"
- PAVEMENT & CURB REMOVAL
- BITUMINOUS SURFACE REMOVAL, BUTT JOINT 1/2"
- SIDEWALK REMOVAL
- DRIVEWAY PAVEMENT REMOVAL

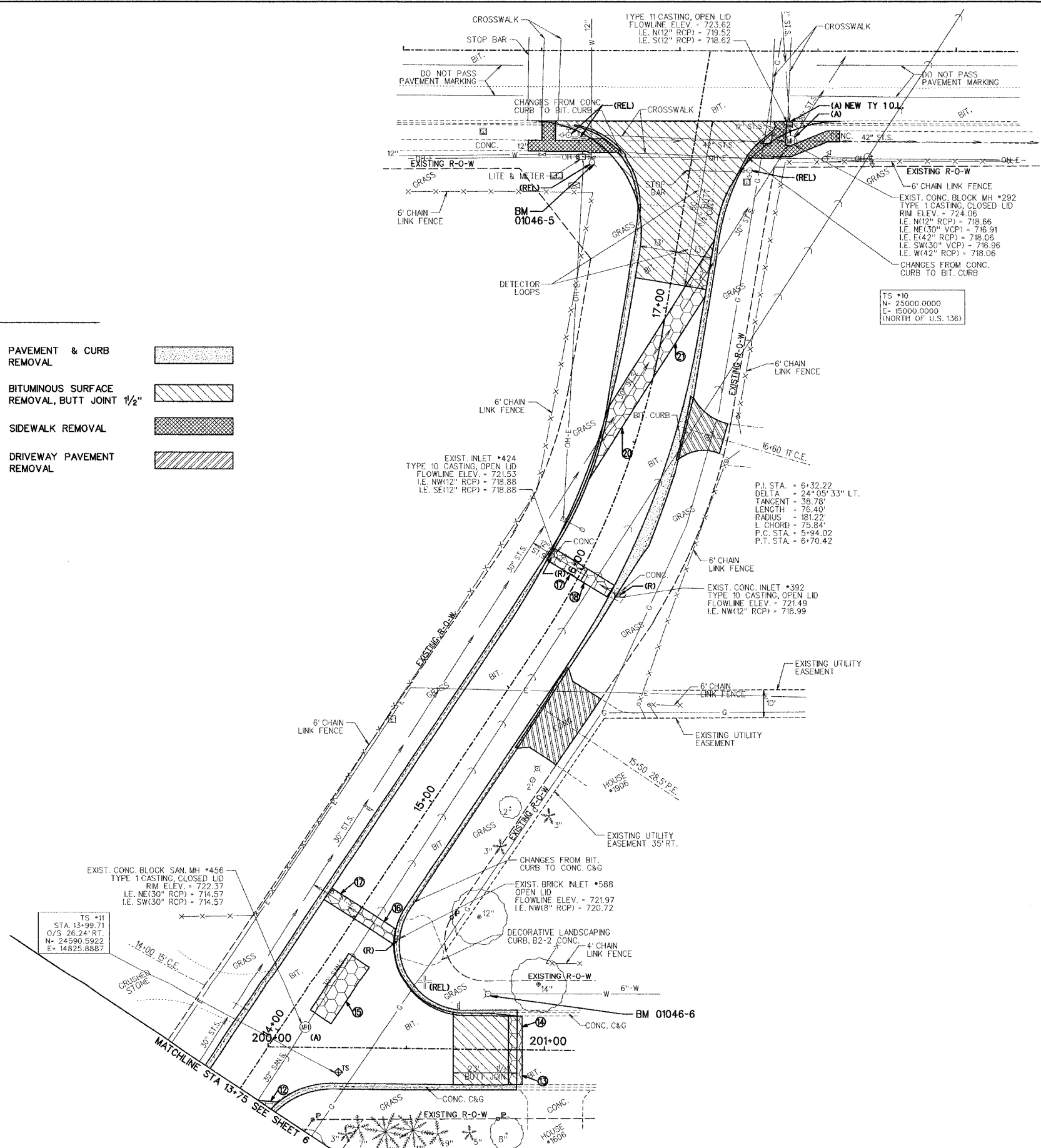


SECTION	COUNTY	TOTAL SHEETS	SHEET NO.
01-00088-00-WR	CHAMPAIGN	21	8
STA.	TO STA.		
F.H.W.A. REG.	ILLINOIS	PROJECT	



REMOVAL

- | | | |
|---------------------------------------|---|--|
| INDICATES ITEM TO BE REMOVED (R) | PAVEMENT & CURB REMOVAL | |
| INDICATES ITEM TO BE ADJUSTED (A) | BITUMINOUS SURFACE REMOVAL, BUTT JOINT 1/2" | |
| INDICATES ITEMS TO BE RELOCATED (REL) | SIDEWALK REMOVAL | |
| CLASS D PATCHING, 6" | DRIVEWAY PAVEMENT REMOVAL | |



SECTION	COUNTY	TOTAL SHEETS	SHEET NO.
01-00088-00-WR	CHAMPAIGN	21	10
STA.	TO STA.		
F.H.W.A. REG.	ILLINOIS PROJECT		

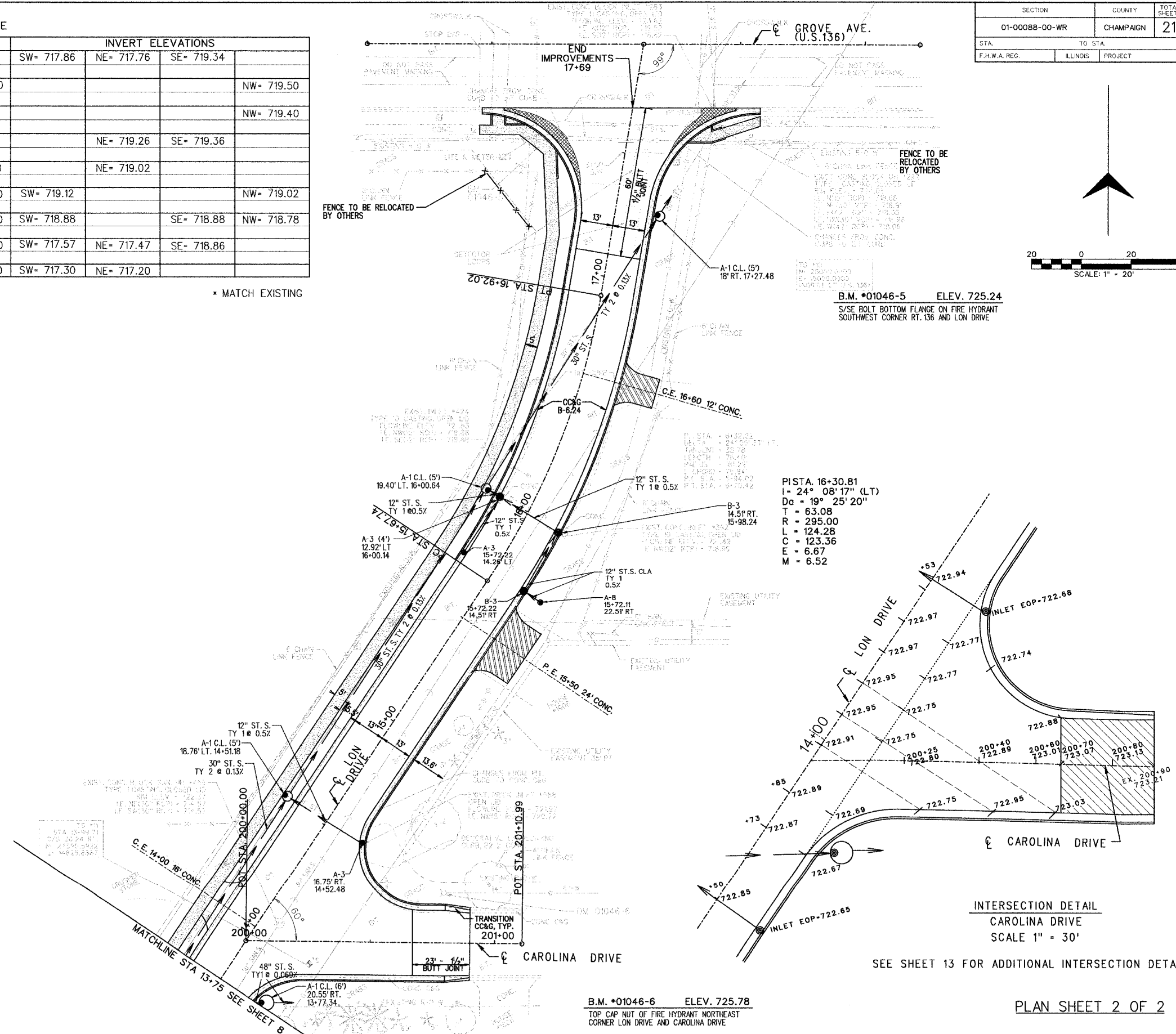
STORM SEWER SCHEDULE

STRUCTURE	STATION	OFFSET	RIM/EOP ELEV.	NORTHING	EASTING	INVERT ELEVATIONS			
A-1 CL (5')	14+51	18.76 LT	RIM= 723.20	24658.3956	14817.1090	SW= 717.86	NE= 717.76	SE= 719.34	
A-3	14+52	16.75 RT	EOP= 722.68	24639.7279	14847.3490				NW= 719.50
A-8	15+72	22.51 RT	RIM= 722.60	24736.2415	14918.8190				NW= 719.40
B-3	15+72	14.51 RT	EOP= 722.21	24740.6905	14912.1700		NE= 719.26	SE= 719.36	
A-3	15+72	14.26 LT	EOP= 722.21	24756.3252	14888.0180		NE= 719.02		
B-3	15+98	14.51 RT	EOP= 722.25	24764.2330	14925.9800	SW= 719.12			NW= 719.02
A-3 (4')	16+00	12.92 LT	EOP= 722.25	24778.6610	14902.5680	SW= 718.88		SE= 718.88	NW= 718.78
A-1 CL (5')	16+01	19.40 LT	RIM= 722.90	24782.0664	14897.0320	SW= 717.57	NE= 717.47	SE= 718.86	
A-1 CL (5')	17+27	18.00 RT	RIM= 724.00	24891.3859	14966.8660	SW= 717.30	NE= 717.20		

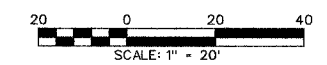
* MATCH EXISTING

ALIGNMENT DATA

	STATION	NORTHING	EASTING	RADIUS	LENGTH
LON DRIVE	08+00.00	24,335.2085	14,322.7697		
	PC 09+43.61	24,335.3958	14,466.3823	295.00	289.04
	PT 12+32.65	24,466.3388	14,711.1719		
	PC 15+67.74	24,744.8309	14,897.5231	295.00	124.28
	PT 16+92.02	24,859.4367	14,943.1746		
	PT 17+94.44	24960.4071	14,960.3433		
GATES DRIVE	100+00.00	24,394.8807	14,643.6429		
	PC 100+49.68	24,355.2190	14,673.5591	50.13	44.48
	PT 100+94.18	24,335.3110	14,711.7088		
CAROLINA DRIVE	POT 104+00.86	24,334.0281	15,018.4121		
	136				
136	50+00.00	24,960.6818	14,849.3433		
	52+22.00	24,960.0703	15,071.3433		



PISTA. 16+30.81
 I= 24° 08' 17" (LT)
 Da = 19° 25' 20"
 T = 63.08
 R = 295.00
 L = 124.28
 C = 123.36
 E = 6.67
 M = 6.52



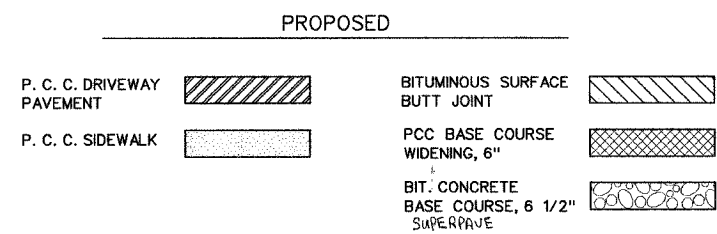
B.M. *01046-5 ELEV. 725.24
 S/S E BOLT BOTTOM FLANGE ON FIRE HYDRANT
 SOUTHWEST CORNER RT. 136 AND LON DRIVE

INTERSECTION DETAIL
 CAROLINA DRIVE
 SCALE 1" = 30'

SEE SHEET 13 FOR ADDITIONAL INTERSECTION DETAILS

DATE: _____
 BY: _____
 CHECKED: _____
 DESIGNED: _____
 DRAWN: _____
 ORIGINAL SURVEY NO. _____
 SURVEY DATE: _____
 SURVEY AREA: _____
 SURVEY METHOD: _____
 SURVEY INSTRUMENT: _____
 SURVEY CONTROL: _____
 SURVEY ACCURACY: _____

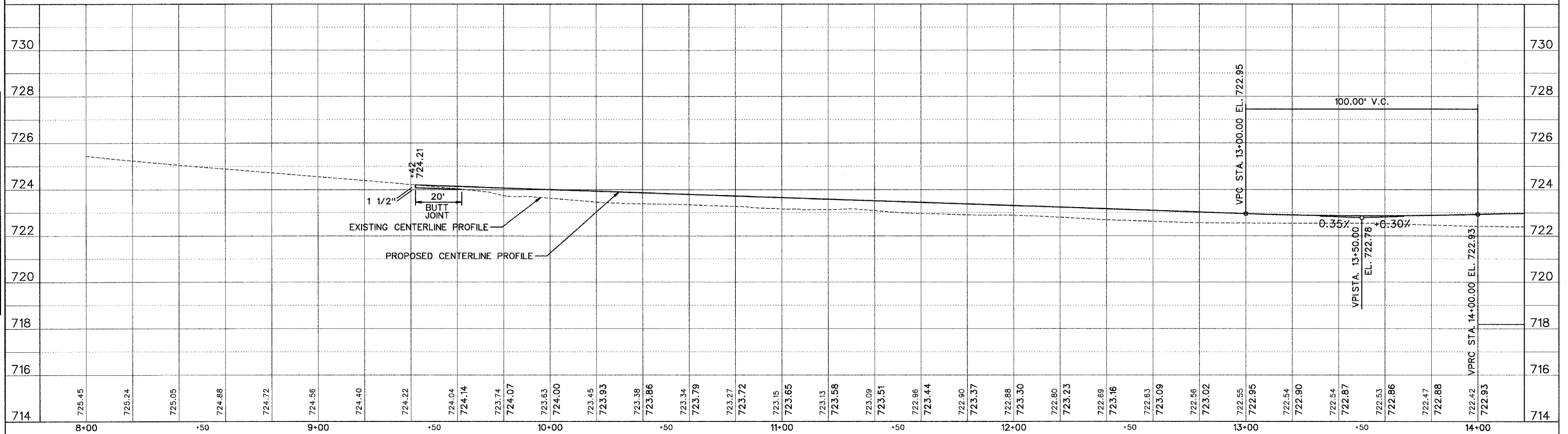
DATE: _____
 BY: _____
 CHECKED: _____
 DESIGNED: _____
 DRAWN: _____
 ORIGINAL SURVEY NO. _____
 SURVEY DATE: _____
 SURVEY AREA: _____
 SURVEY METHOD: _____
 SURVEY INSTRUMENT: _____
 SURVEY CONTROL: _____
 SURVEY ACCURACY: _____



SECTION	COUNTY	TOTAL SHEETS	SHEET NO.
01-00088-00-WR	CHAMPAIGN	21	11
STA.	TO STA.		
F.H.W.A. REG.	ILLINOIS	PROJECT	

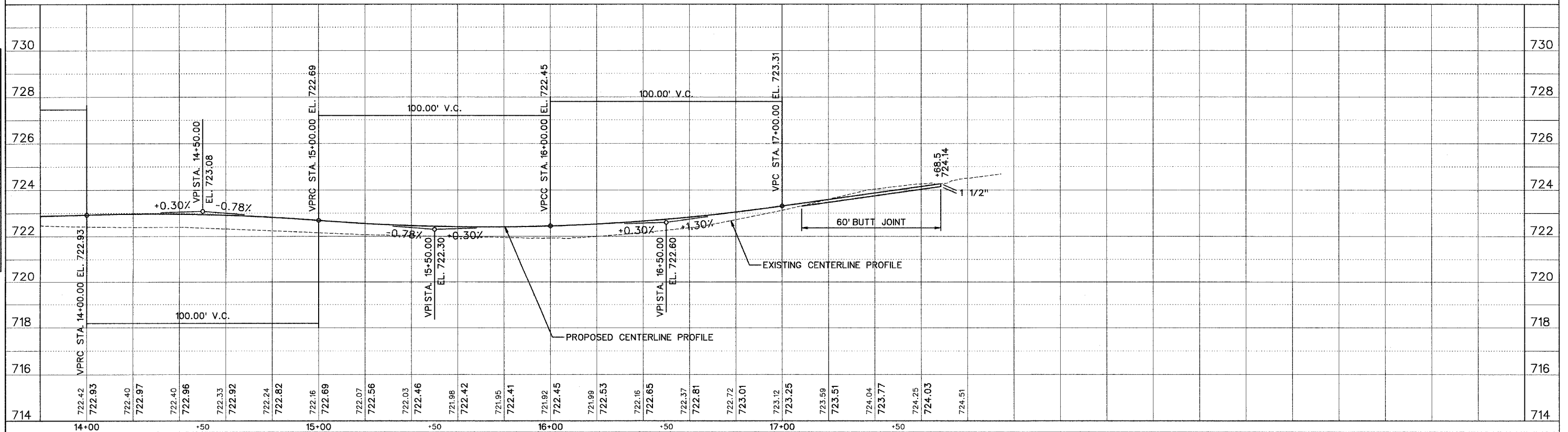
LON DRIVE

PLAN	SURVEYED	BY	DATE
	SLOTTED		
	NOTES		
	NOTE BOOK ALIGNMENT CHECKED		
	NO. RT. OF WAY CHECKED		



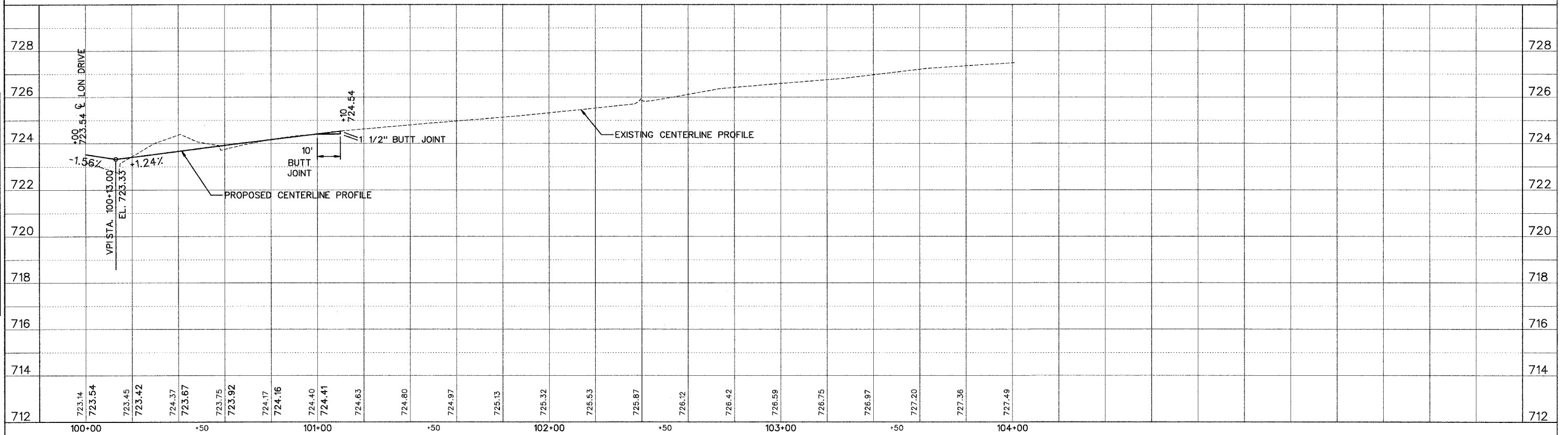
LON DRIVE

PROFILE	SURVEYED	BY	DATE
	GRADES CHECKED		
	B.M.'S NOTED		
	STRUCTURE NOTATIONS CHECKED		



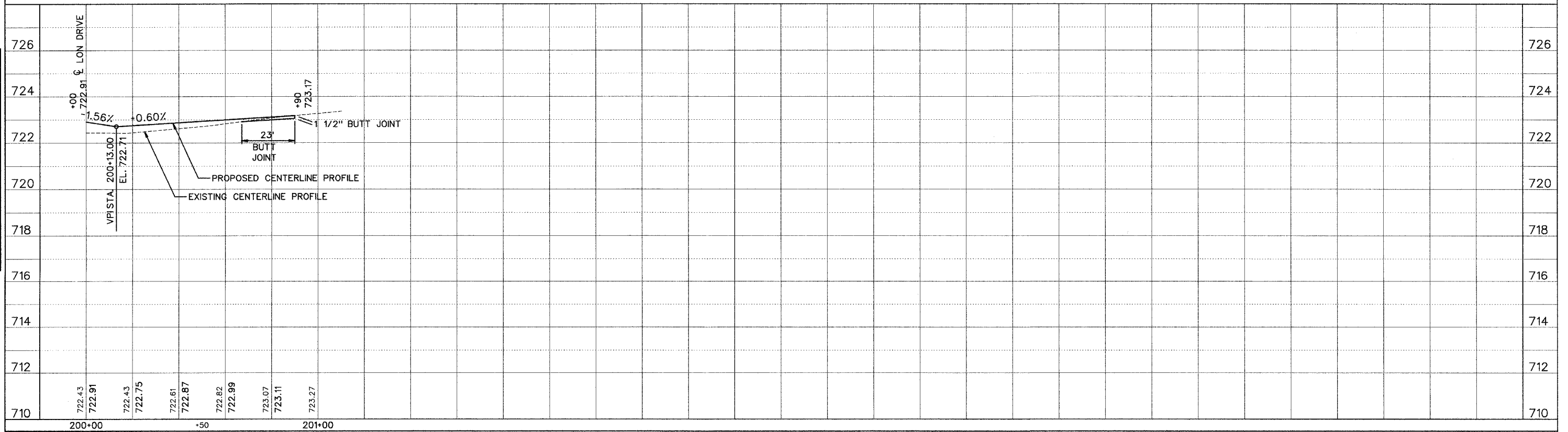
SECTION	COUNTY	TOTAL SHEETS	SHEET NO.
01-00088-00-WR	CHAMPAIGN	21	12
STA. TO STA.			
F.H.W.A. REC.	ILLINOIS	PROJECT	

GATES DRIVE



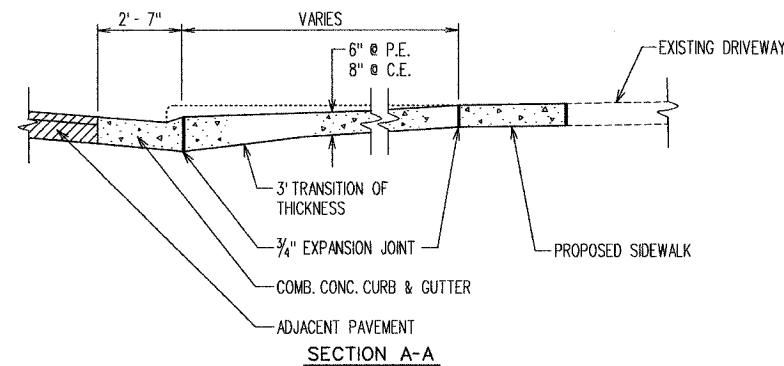
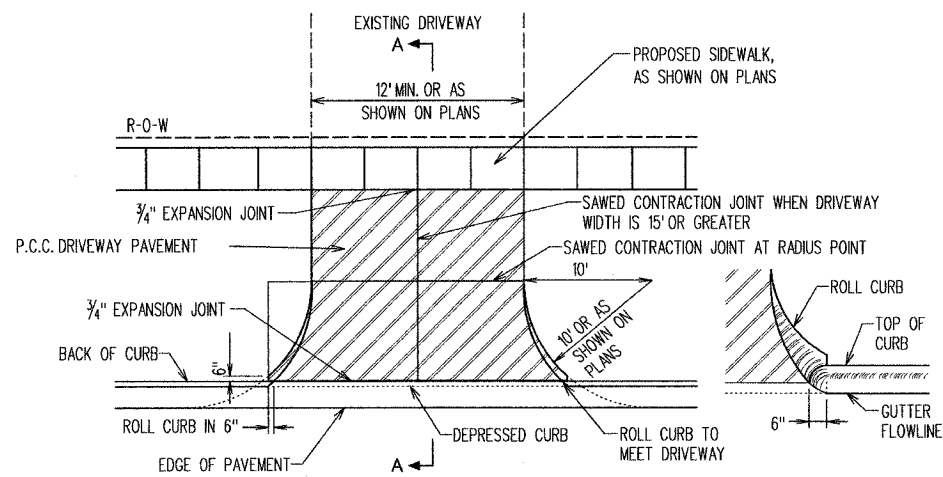
PLAN	DESIGNED	DATE
	PLOTTED	
	NOTE BOOK ALIGNMENT CHECKED	
	NO. RT. OF WAY CHECKED	

CAROLINA DRIVE



PROFILE	DESIGNED	DATE
	PLOTTED	
	GRADES CHECKED	
	B.M. & NOTES	
	STRUCTURE NOTATIONS CHECKED	

SECTION	COUNTY	TOTAL SHEETS	SHEET NO.
01-00088-00-WR	CHAMPAIGN	21	13
S.I.A. TO STA.			
F.H.W.A. REG.	ILLINOIS	PROJECT	



P.C.C. DRIVEWAY ENTRANCE DETAIL

NOTES:

THE COST OF CONSTRUCTING THE P.C. CONCRETE SIDEWALK 6" OR 8" THICK THROUGH DRIVEWAYS SHALL BE CONSIDERED INCIDENTAL TO THE P.C. CONCRETE SIDEWALK 5" AND NO ADDITIONAL COMPENSATION WILL BE ALLOWED.

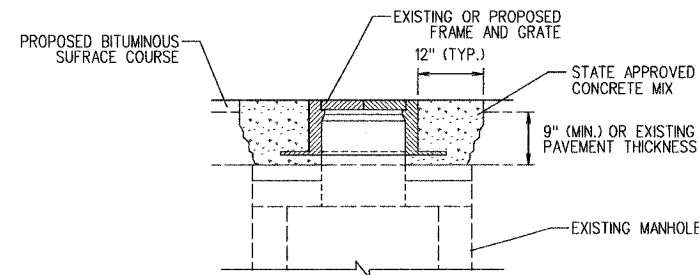
THE COST OF CONSTRUCTING THE P.C. CONCRETE DRIVEWAY PAVEMENT THICKER ADJACENT TO THE COMBINATION CONCRETE CURB AND GUTTER AS SHOWN IN SECTION A-A AND SECTION B-B WILL BE CONSIDERED INCIDENTAL TO THE P.C. CONCRETE DRIVEWAY PAVEMENT AND NO ADDITIONAL COMPENSATION WILL BE ALLOWED.

WHEN THE WIDTH OF THE P.C. CONCRETE DRIVEWAY PAVEMENT IS 15 FEET OR GREATER A CONSTRUCTION JOINT, APPROVED BY THE ENGINEER, SHALL BE PLACED IN THE CENTER OF THE DRIVEWAY.

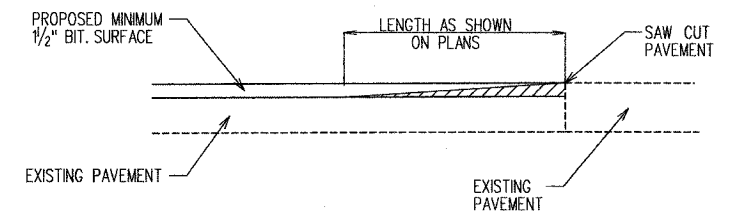
THE MINIMUM WIDTH OF P.C. CONCRETE DRIVEWAY PAVEMENT SHALL BE 12 FEET AND MAXIMUM WIDTH OF 36 FEET UNLESS SHOWN OTHERWISE ON THE PLANS.

VARIABLE HEIGHT CURB ADJACENT TO P.C. CONCRETE DRIVEWAY PAVEMENT SHALL BE CONSTRUCTED MONOLITHIC WITH AND INCLUDED IN THE AREA OF P.C. CONCRETE DRIVEWAY PAVEMENT AND NO ADDITIONAL COMPENSATION WILL BE ALLOWED.

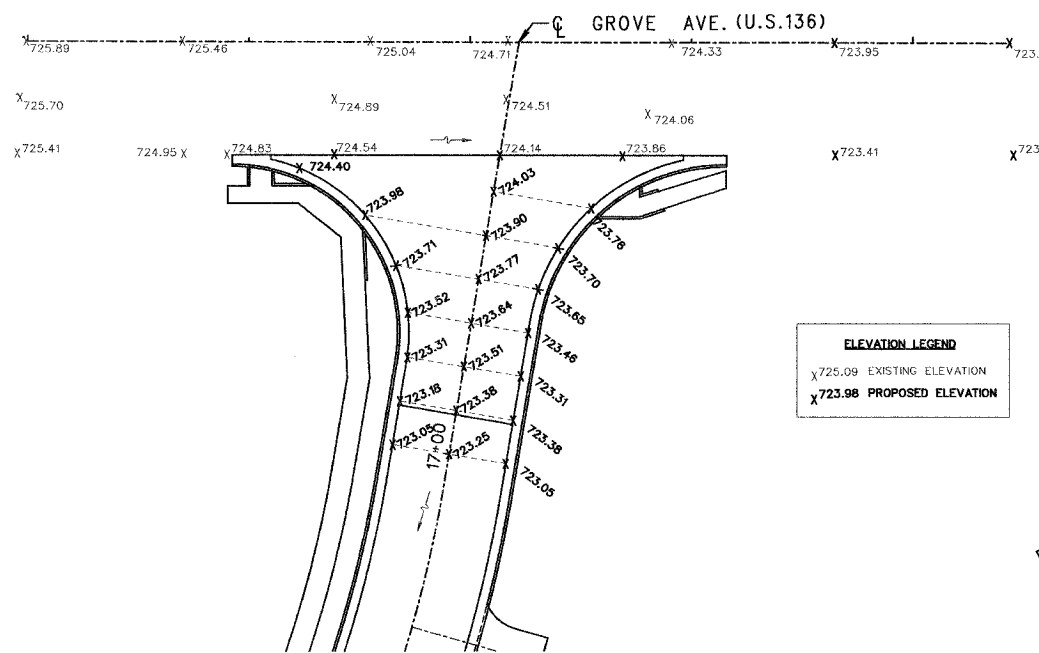
ALL COST OF CONSTRUCTING THE COMBINATION CONCRETE CURB AND GUTTER AS SHOWN SHALL BE INCLUDED IN THE CONTRACT UNIT PRICE PER FOOT FOR COMBINATION CONCRETE CURB AND GUTTER OF THE TYPE SPECIFIED IN THE PLANS.



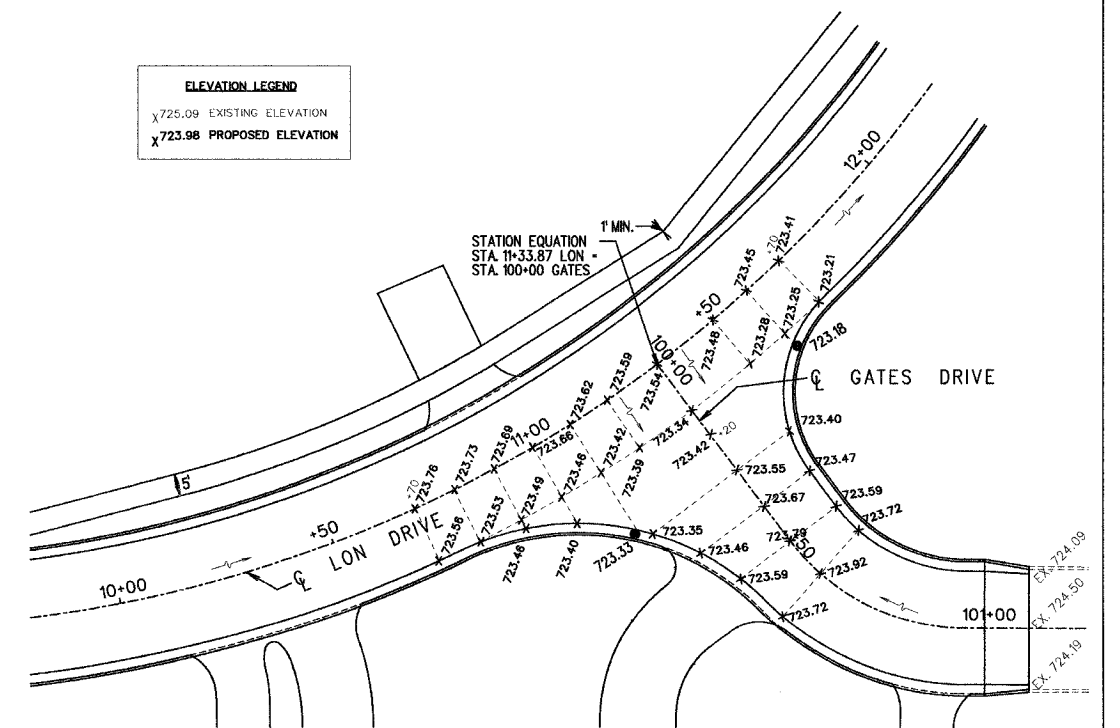
MANHOLES TO BE ADJUSTED



BIT. SURFACE REMOVAL-BUTT JOINT DETAIL



**INTERSECTION DETAIL
LON DRIVE AND US 136
SCALE 1" = 20'**



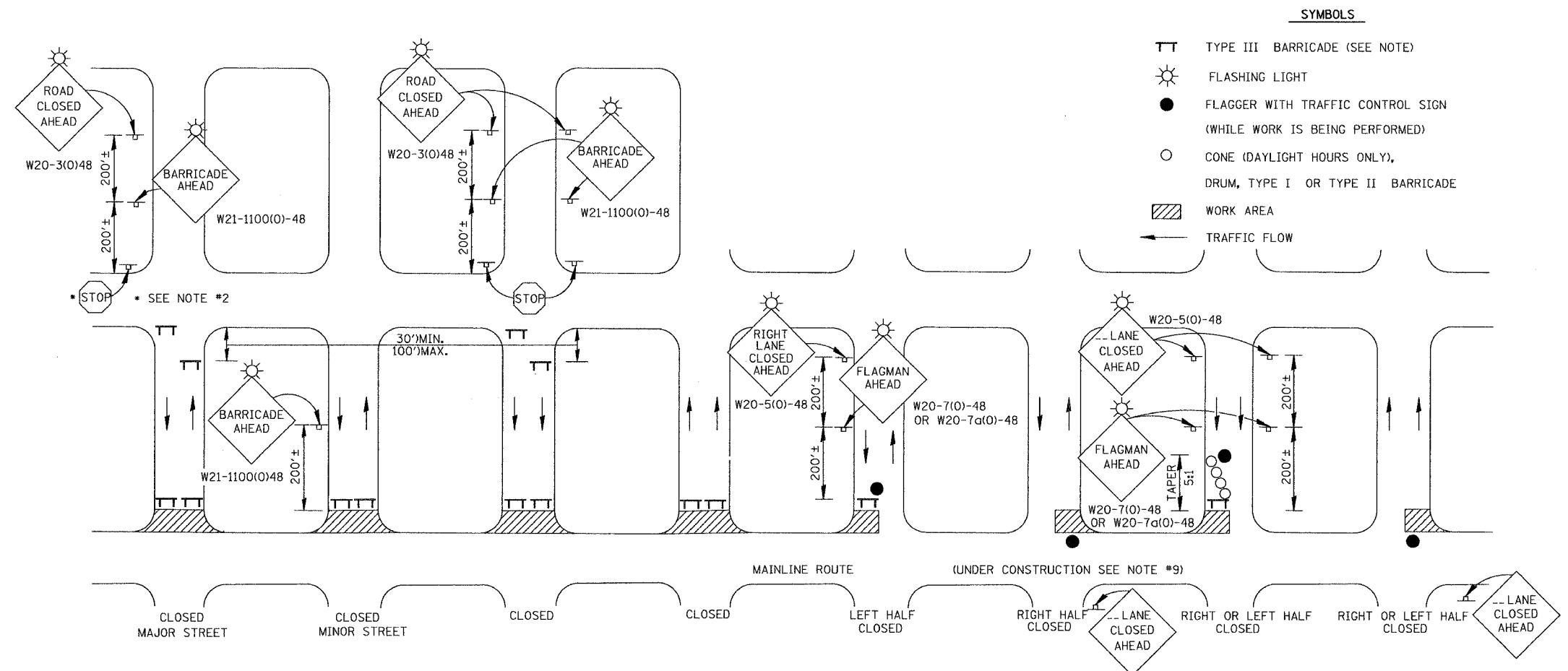
**INTERSECTION DETAIL
LON DRIVE AND GATES DRIVE
SCALE 1" = 20'**

SECTION	COUNTY	TOTAL SHEETS	SHEET NO.
01-00088-00-WR	CHAMPAIGN	21	14
STA.	TO STA.		
F.H.W.A. REG.	ILLINOIS	PROJECT	

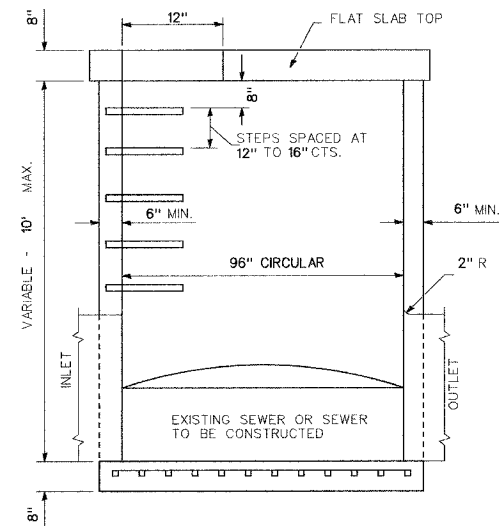
TYPICAL APPLICATION OF TRAFFIC CONTROL DEVICES FOR SIDE STREET CLOSURES

GENERAL NOTES

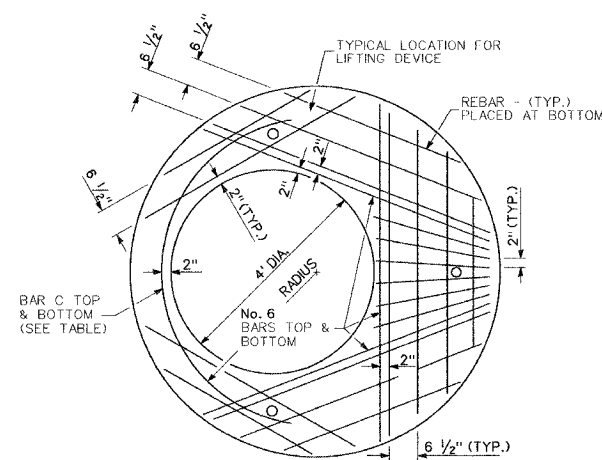
- TYPE III BARRICADES SHALL BE AS SHOWN ON "TYPICAL APPLICATIONS OF TYPE III BARRICADES CLOSING A ROAD" SIGN STD. 1211-2 OR 1211-4 SHALL BE MOUNTED ON THE BARRICADE. EACH TYPE III BARRICADE SHALL HAVE TWO FLASHING AMBER LIGHTS MOUNTED ABOVE IT.
- WHERE A STOP CONDITION EXISTS, AS SHOWN ABOVE, WARNING SIGNS MAY BE OMITTED IN ADVANCE OF THE "STOP" SIGN.
- STANDARD 702001 SHALL APPLY FOR THE PLACEMENT & MANUFACTURE OF TYPE III BARRICADES.
- ALL SIGNS SHALL BE POST MOUNTED IF THE CLOSURE TIME EXCEEDS FOUR DAYS.
- ONE FLASHING LIGHT IS REQUIRED ABOVE EACH ADVANCE WARNING SIGN DURING HOURS OF DARKNESS.
- LONGITUDINAL DIMENSIONS MAY BE ADJUSTED SLIGHTLY TO FIT FIELD CONDITIONS.
- FORMS BT 725 AND BT 726 ARE REQUIRED.
- THE MAINLINE ROUTE TEMPORARY TRAFFIC CONTROL SHALL BE IN ACCORDANCE WITH THE PLANS, SPECIAL PROVISIONS AND STANDARD SPECIFICATIONS.
- THIS WORK WILL NOT BE PAID FOR SEPARATELY BUT SHALL BE CONSIDERED INCLUDED IN THE VARIOUS PAY ITEMS INVOLVING THE RECONSTRUCTION OF ALL APPLICABLE SIDE STREETS AND NO ADDITIONAL COMPENSATION WILL BE ALLOWED.



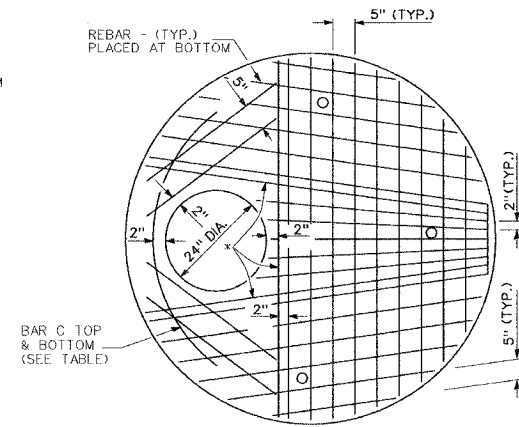
SECTION	COUNTY	TOTAL SHEETS	SHEET NO.
01-00088-00-WR	CHAMPAIGN	21	15
STA.	TO STA.		
F.H.W.A. REC.	ILLINOIS	PROJECT	



ELEVATION



PLAN
SHOWING REBAR REINFORCEMENT



* No. 6 BARS TOP & BOTTOM

GENERAL NOTES

ALTERNATE MATERIAL FOR THE WALLS MAY BE CONCRETE MASONRY UNITS, PRECAST REINFORCED CONCRETE SECTIONS OR CAST-IN-PLACE CONCRETE.

BOTTOM SLAB SHALL BE REINFORCED BY EITHER REINFORCED BARS OR WELDED WIRE FABRIC.

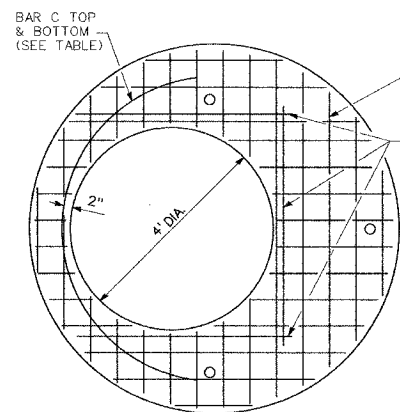
JOINT CONFIGURATION AND DIMENSIONS OF FLAT SLAB TOP SHALL MATCH AND FIT THE RISER JOINT DETAIL.

LIFTING DEVICES SHALL BE APPROVED BY THE ENGINEER

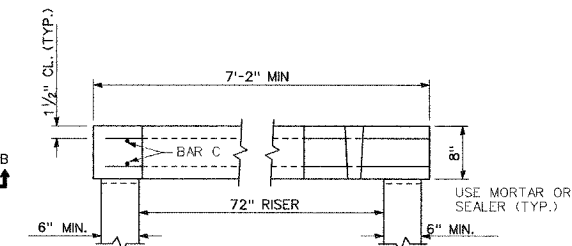
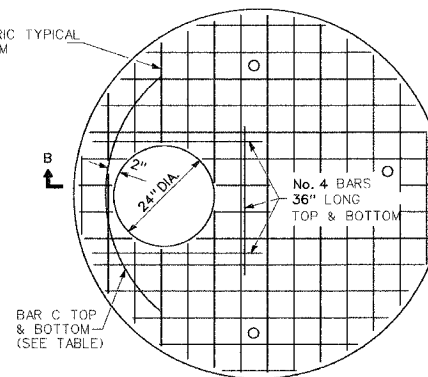
SEE STANDARD 602701 FOR DETAILS OF CAST IRON STEPS.

BOTTOM SLABS SHALL BE REINFORCED WITH A MINIMUM OF 0.46 SQ IN/ FT. IN BOTH DIRECTIONS.

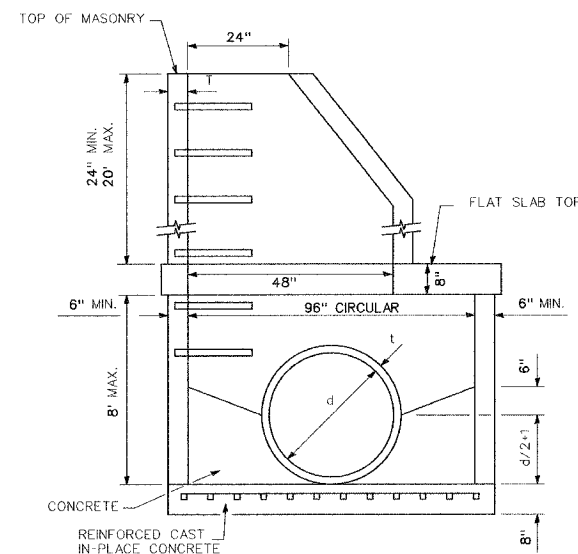
DIAMETER OF OPENING	THICKNESS	REINFORCEMENT "AS" WWF EACH DIRECTION	BAR SIZE	NO. 4 BAR C	
				LENGTH	RADIUS
2'	8"	1.06 SQ IN/ FT	No. 6	6'-0"	38
4'	8"	0.82 SQ IN/ FT	No. 6	9'-0"	38



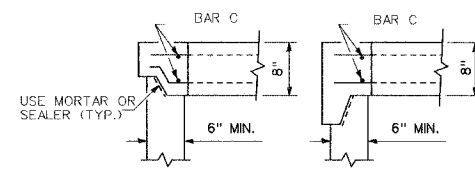
PLAN
SHOWING WELDED WIRE FABRIC REINFORCEMENT



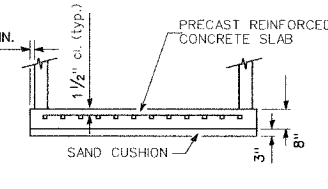
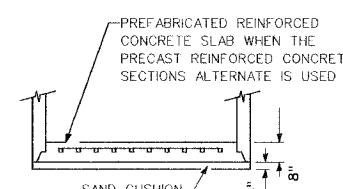
SECTION B-B



ELEVATION



ALTERNATE JOINT CONFIGURATIONS



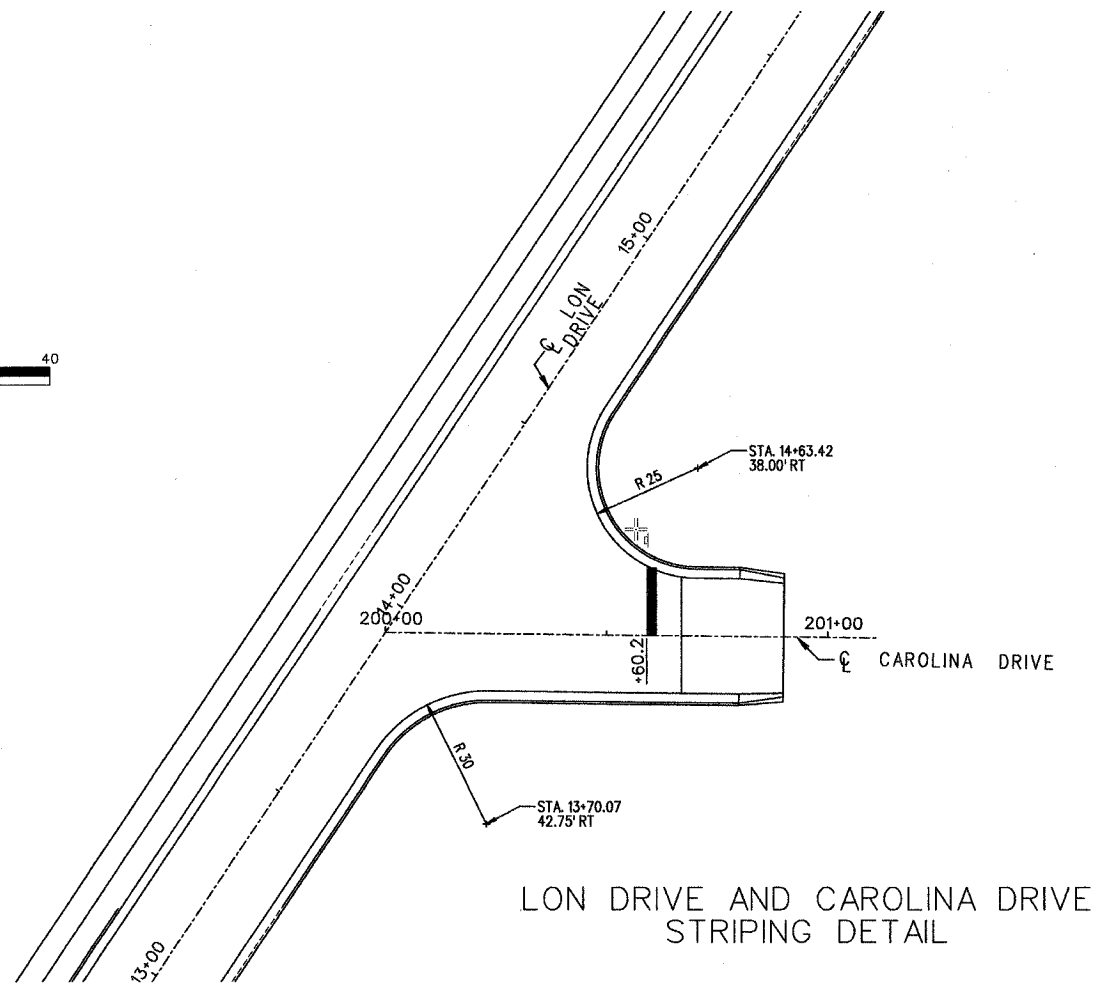
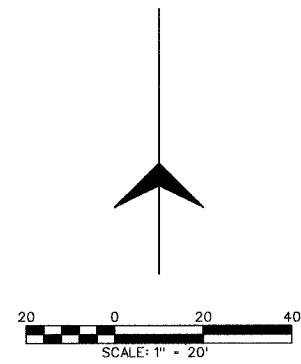
ALTERNATE BOTTOM SLAB

ALTERNATE MATERIALS FOR WALLS	T (INCH)
CONCRETE MASONRY UNITS	5"
PRECAST REINFORCED CONCRETE SECTIONS	4"
CAST-IN-PLACE CONCRETE	6"

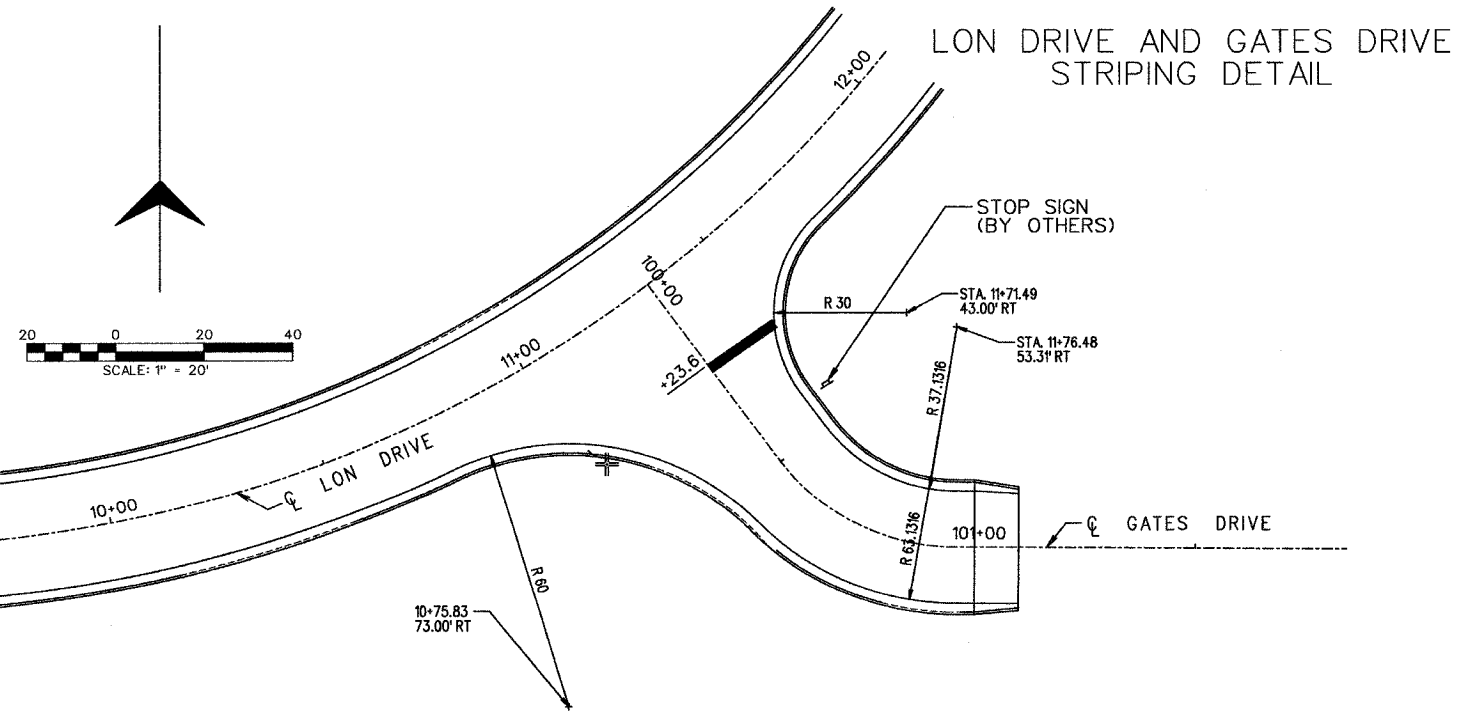
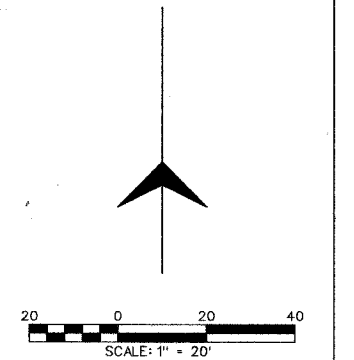
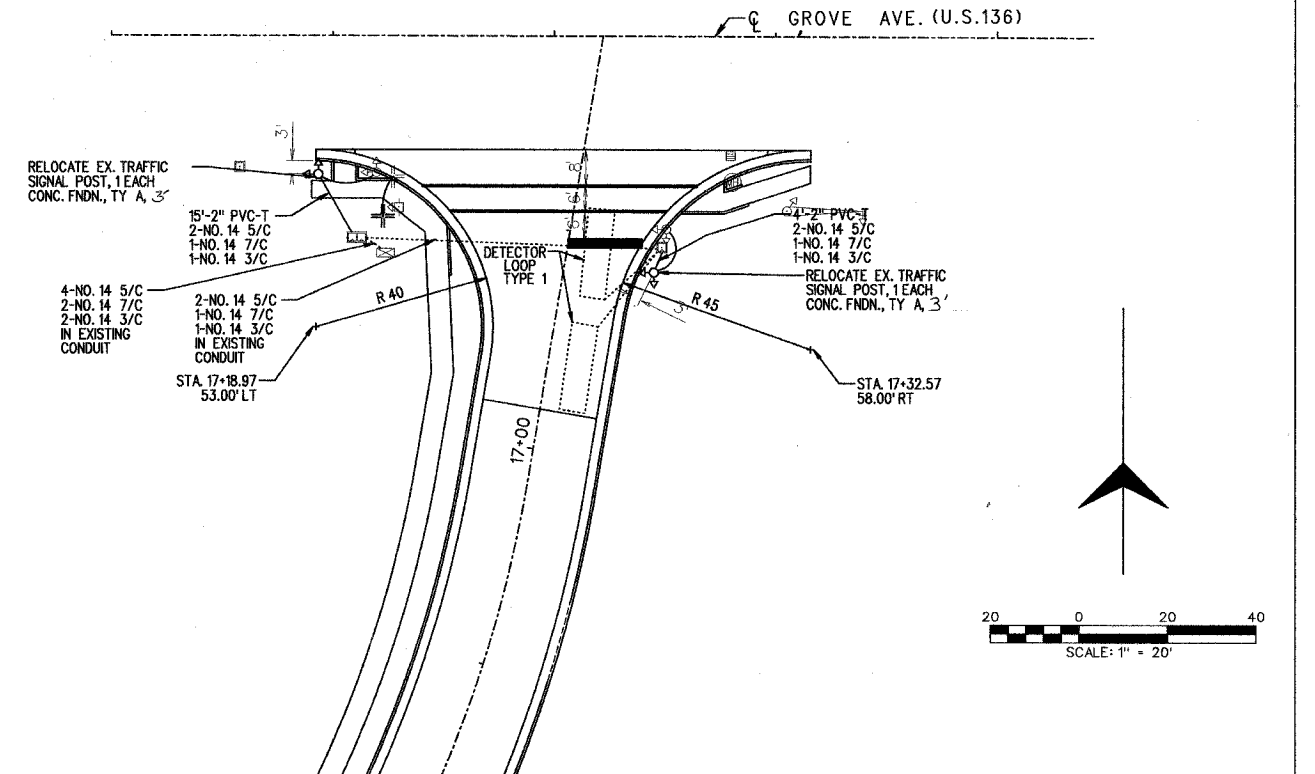
**MANHOLE TYPE A
8' DIAMETER**

DETAIL

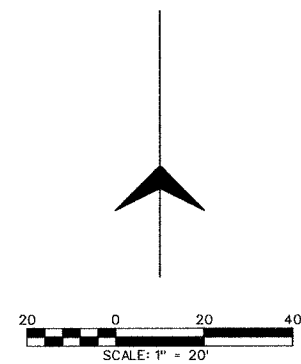
SECTION	COUNTY	TOTAL SHEETS	SHEET NO.
01-00088-00-WR	CHAMPAIGN	21	16
STA.	TO STA.		
F.H.W.A. REG.	ILLINOIS	PROJECT	



LON DRIVE AND CAROLINA DRIVE STRIPING DETAIL



LON DRIVE AND GATES DRIVE STRIPING DETAIL

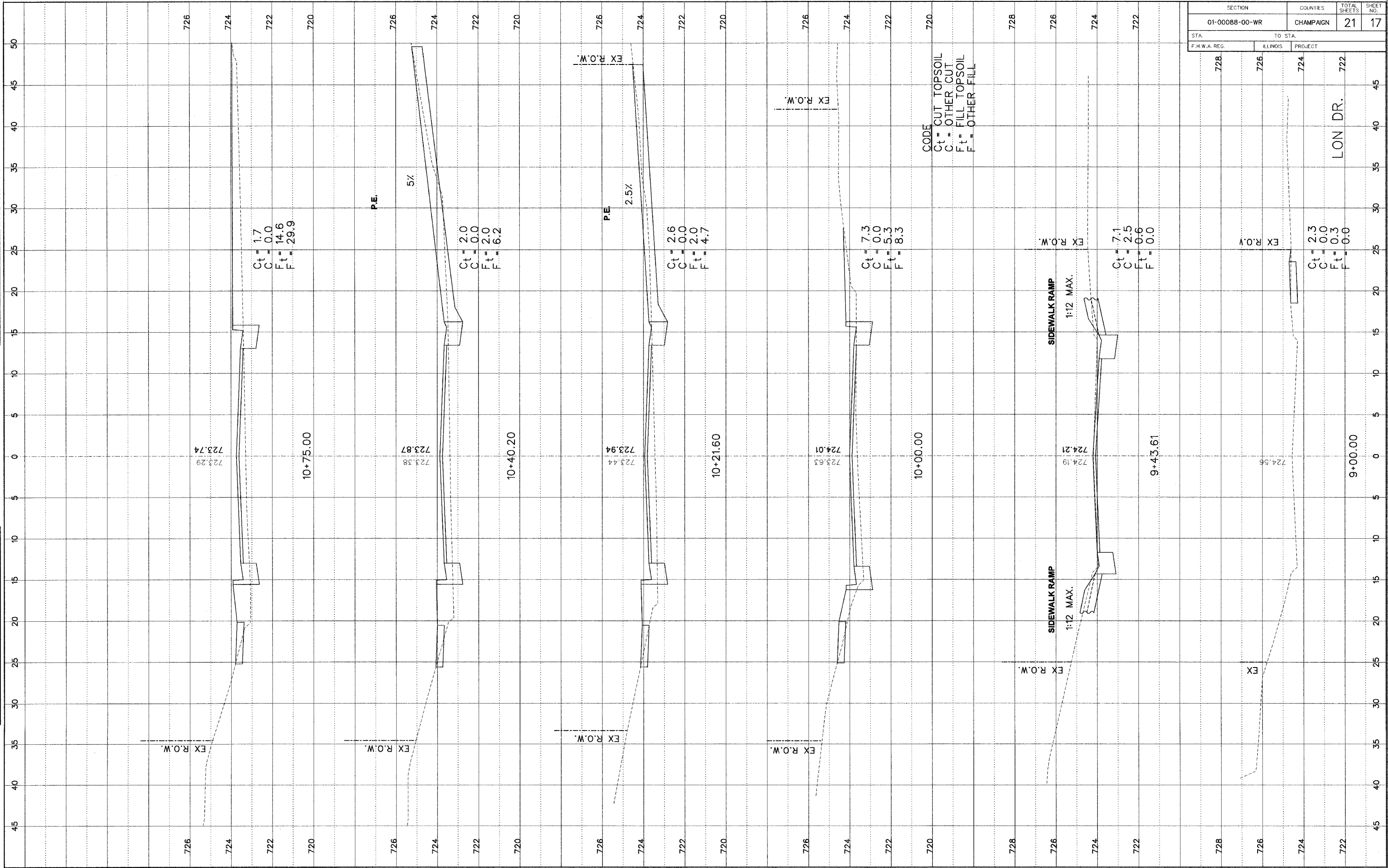


BILL OF MATERIALS		
ITEM	UNIT	QUANTITY
CONDUIT IN TRENCH, 2 " DIA., PVC	FOOT	19.0
TRENCH AND BACKFILL FOR ELECTRICAL WORK	FOOT	19.0
ELECTRIC CABLE IN CONDUIT, SIGNAL No. 14 3C	FOOT	170.0
ELECTRIC CABLE IN CONDUIT, SIGNAL No. 14 5C	FOOT	340.0
ELECTRIC CABLE IN CONDUIT, SIGNAL No. 14 7C	FOOT	170.0
RELOCATE EXISTING TRAFFIC SIGNAL POST	EACH	2.0
CONCRETE FOUNDATION, TYPE A	FOOT	6.0
REMOVE EXISTING CONCRETE FOUNDATION	EACH	2.0
DETECTOR LOOP, TYPE I	FOOT	141.0
REMOVE ELECTRIC CABLE FROM CONDUIT	FOOT	680.0

LON DRIVE AND US 136 SIGNAL AND STRIPING DETAIL

FINAL SURVEY
 BY: _____ DATE: _____
 SURVEY NO.: _____
 NOTE BOOK NO.: _____
 DATE RECORDED: _____

ORIGINAL SURVEY
 BY: _____ DATE: _____
 SURVEY NO.: _____
 NOTE BOOK NO.: _____
 DATE RECORDED: _____



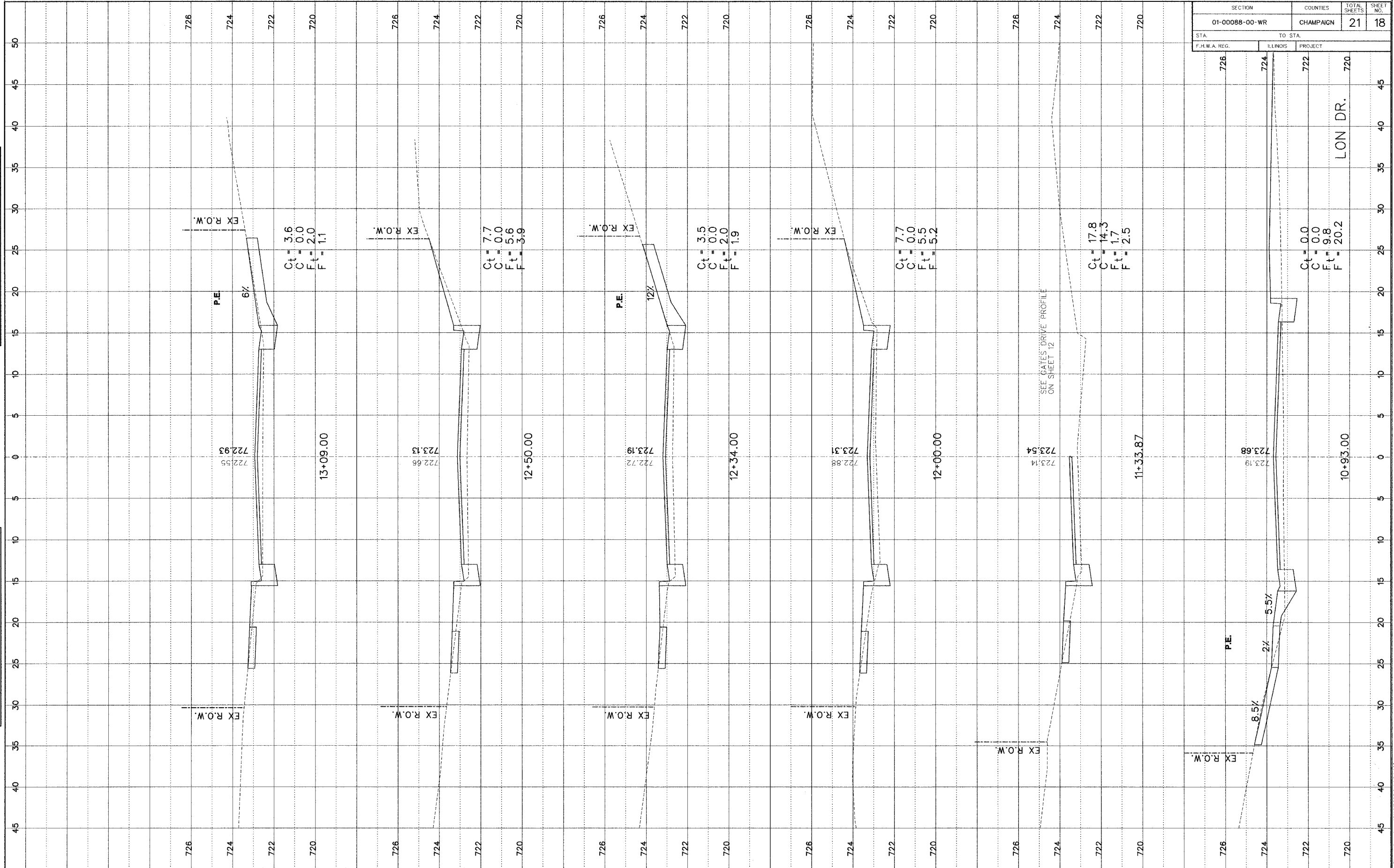
SECTION	COUNTIES	TOTAL SHEETS	SHEET NO.
01-00088-00-WR	CHAMPAIGN	21	17
STA.	TO STA.		
F.H.W.A. REG.	ILLINOIS	PROJECT	
728	726	724	722

CODE
 Ct = CUT TOPSOIL
 C = OTHER CUT
 Ft = FILL TOPSOIL
 F = OTHER FILL

X:\Spec\Sheets Lon.dgn 12/6/2006 3:17:32 PM

FINAL SURVEY
 DRAWING NO. _____
 DATE _____

ORIGINAL SURVEY
 DRAWING NO. _____
 DATE _____

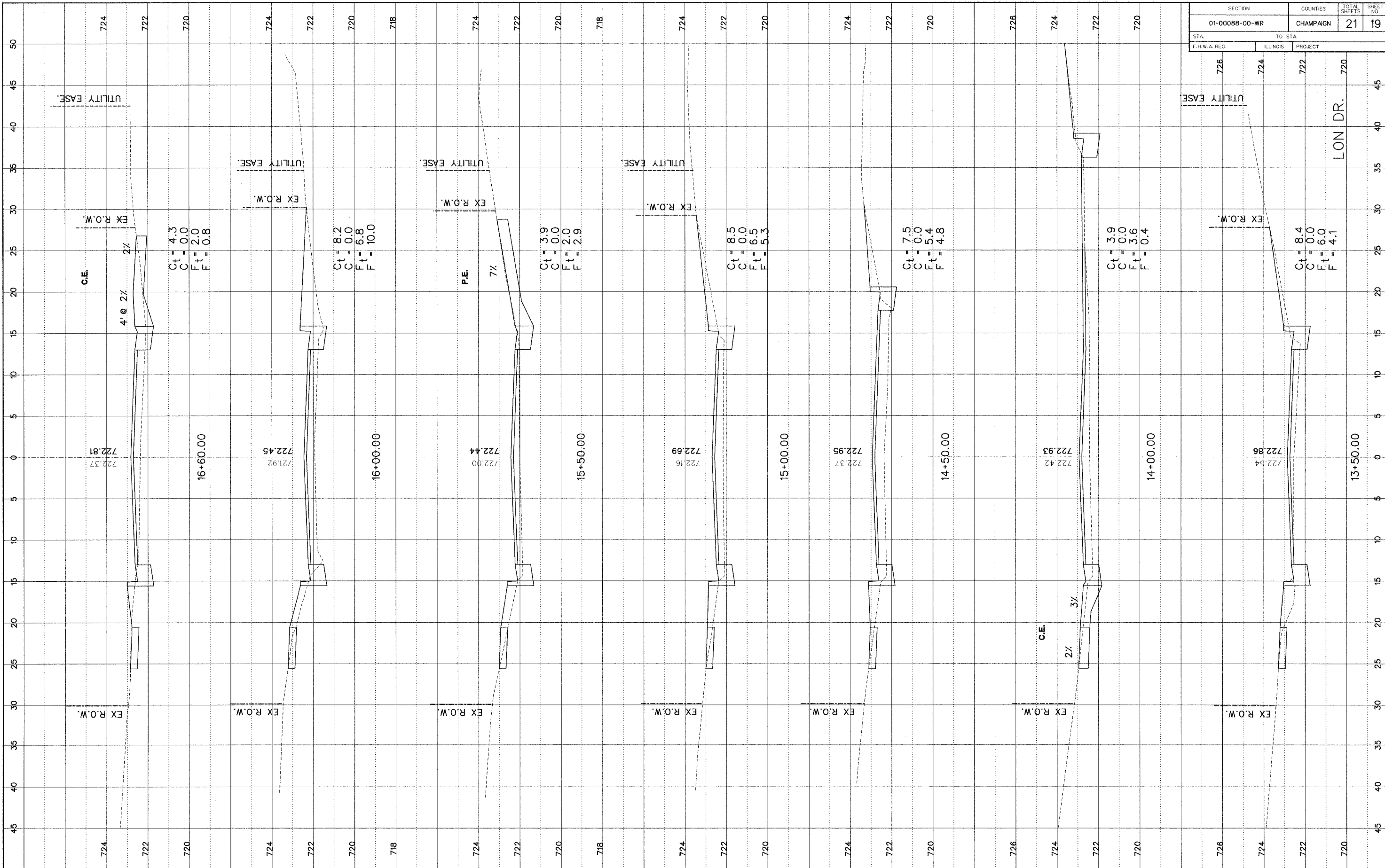


SECTION	COUNTIES	TOTAL SHEETS	SHEET NO.
01-00088-00-WR	CHAMPAIGN	21	18
STA.	TO STA.		
F.H.W.A. REG.	ILLINOIS PROJECT		

X:\Section Sheets Lon.dgn 12/16/2005 8:14:24 AM

FINAL SURVEY
 DRAWING NO. _____
 DATE _____

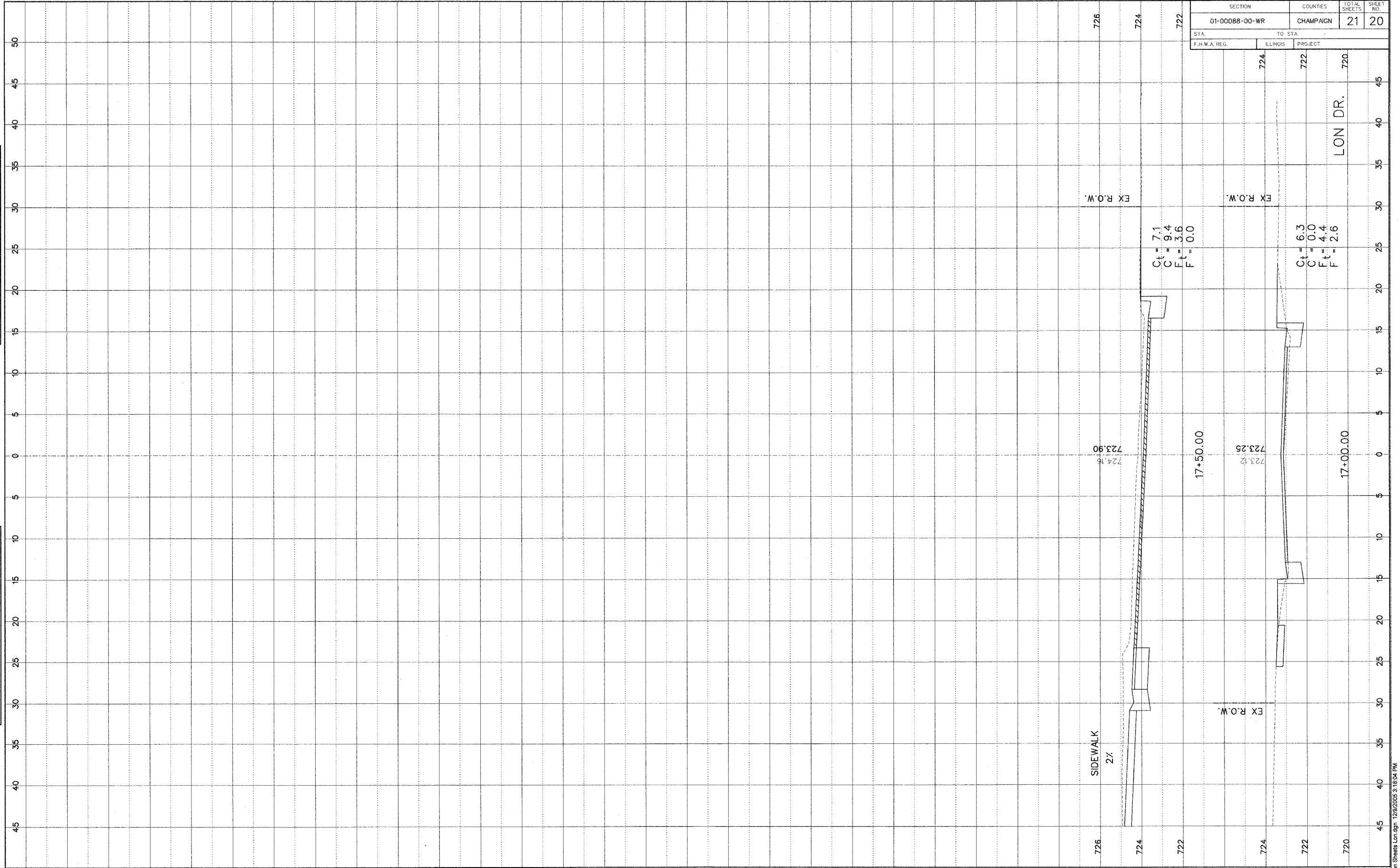
ORIGINAL SURVEY
 DRAWING NO. _____
 DATE _____



SECTION	COUNTIES	TOTAL SHEETS	SHEET NO.
01-00088-00-WR	CHAMPAIGN	21	19
STA.	TO STA.		
F.H.W.A. REG.	ILLINOIS PROJECT		

FINAL SURVEY	DATE
NO. _____	BY _____
NO. _____	DATE _____
NO. _____	BY _____
NO. _____	DATE _____

ORIGINAL SURVEY	DATE
NO. _____	BY _____
NO. _____	DATE _____
NO. _____	BY _____
NO. _____	DATE _____



FINAL SURVEY	DATE
NO. _____	BT _____
NOTE BOOK NO. _____	DATE _____
PLAT NO. _____	DATE _____

ORIGINAL SURVEY	DATE
NO. _____	BT _____
NOTE BOOK NO. _____	DATE _____
PLAT NO. _____	DATE _____

SECTION		COUNTIES	TOTAL SHEETS	SHEET NO.
01-00088-00-WR		CHAMPAIGN	21	21
STA.	TO STA.			
726	724	722		720
F.H.W.A. REG.	ILLINOIS	PROJECT		

