

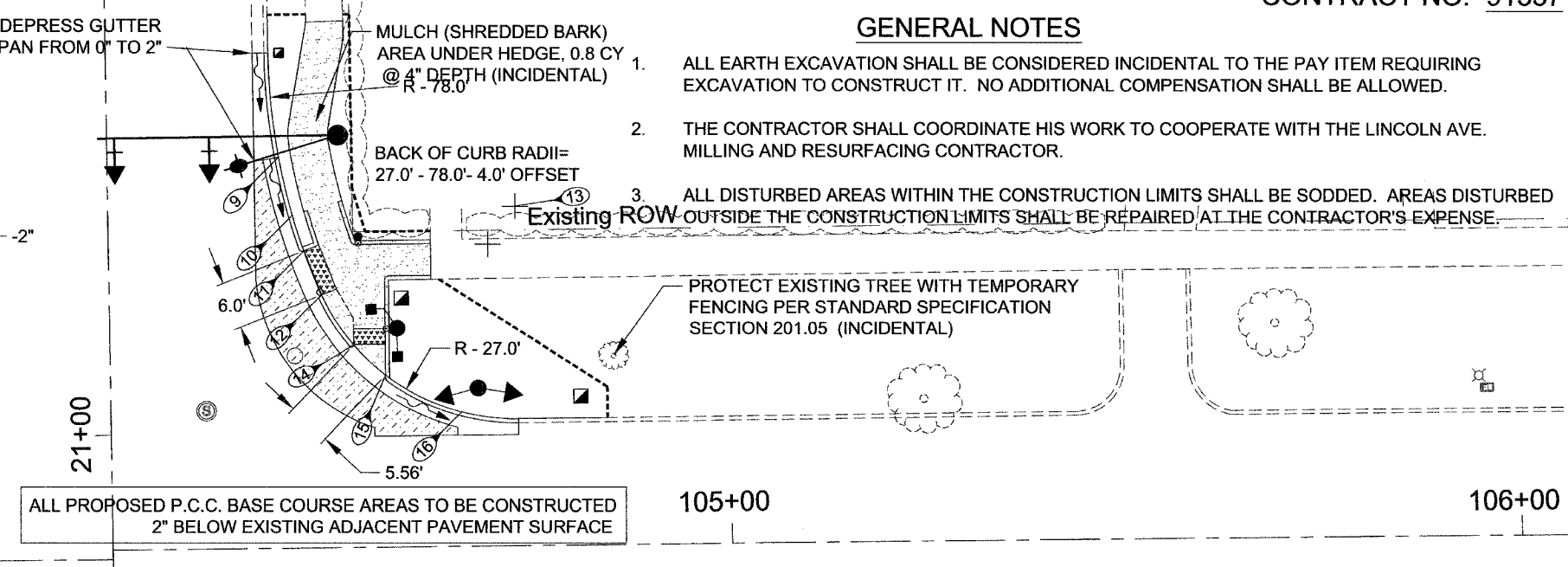
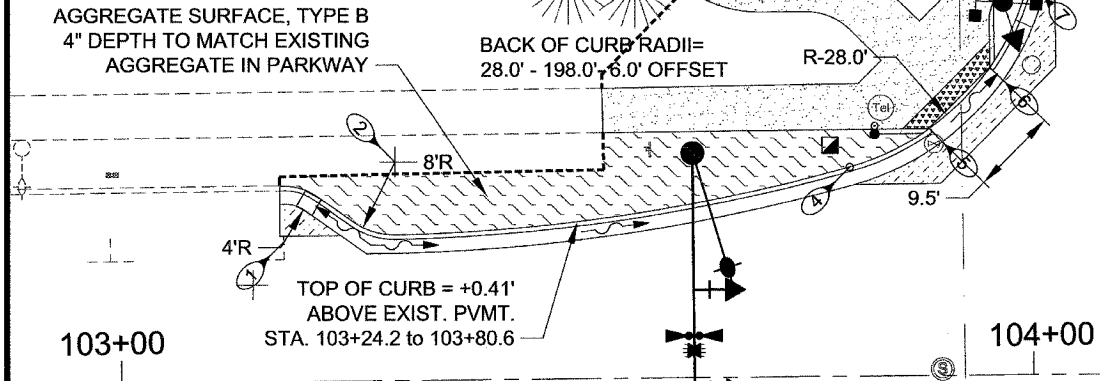
GENERAL NOTES

1. ALL EARTH EXCAVATION SHALL BE CONSIDERED INCIDENTAL TO THE PAY ITEM REQUIRING EXCAVATION TO CONSTRUCT IT. NO ADDITIONAL COMPENSATION SHALL BE ALLOWED.
2. THE CONTRACTOR SHALL COORDINATE HIS WORK TO COOPERATE WITH THE LINCOLN AVE. MILLING AND RESURFACING CONTRACTOR.
3. ALL DISTURBED AREAS WITHIN THE CONSTRUCTION LIMITS SHALL BE SODDED. AREAS DISTURBED OUTSIDE THE CONSTRUCTION LIMITS SHALL BE REPAIRED AT THE CONTRACTOR'S EXPENSE.

SEE SCHEDULE OF QUANTITIES FOR PAY ITEMS LOCATIONS AND QUANTITIES

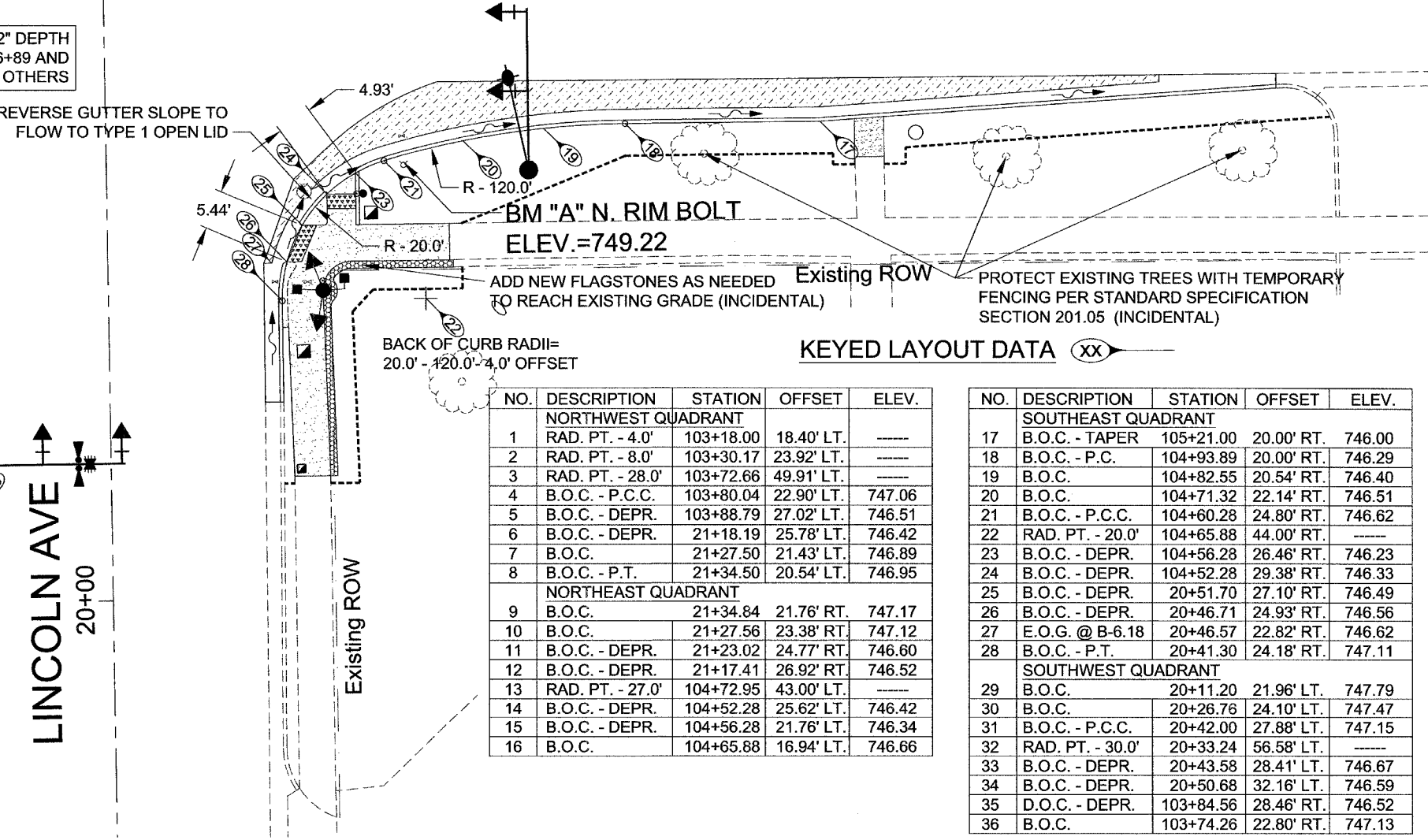
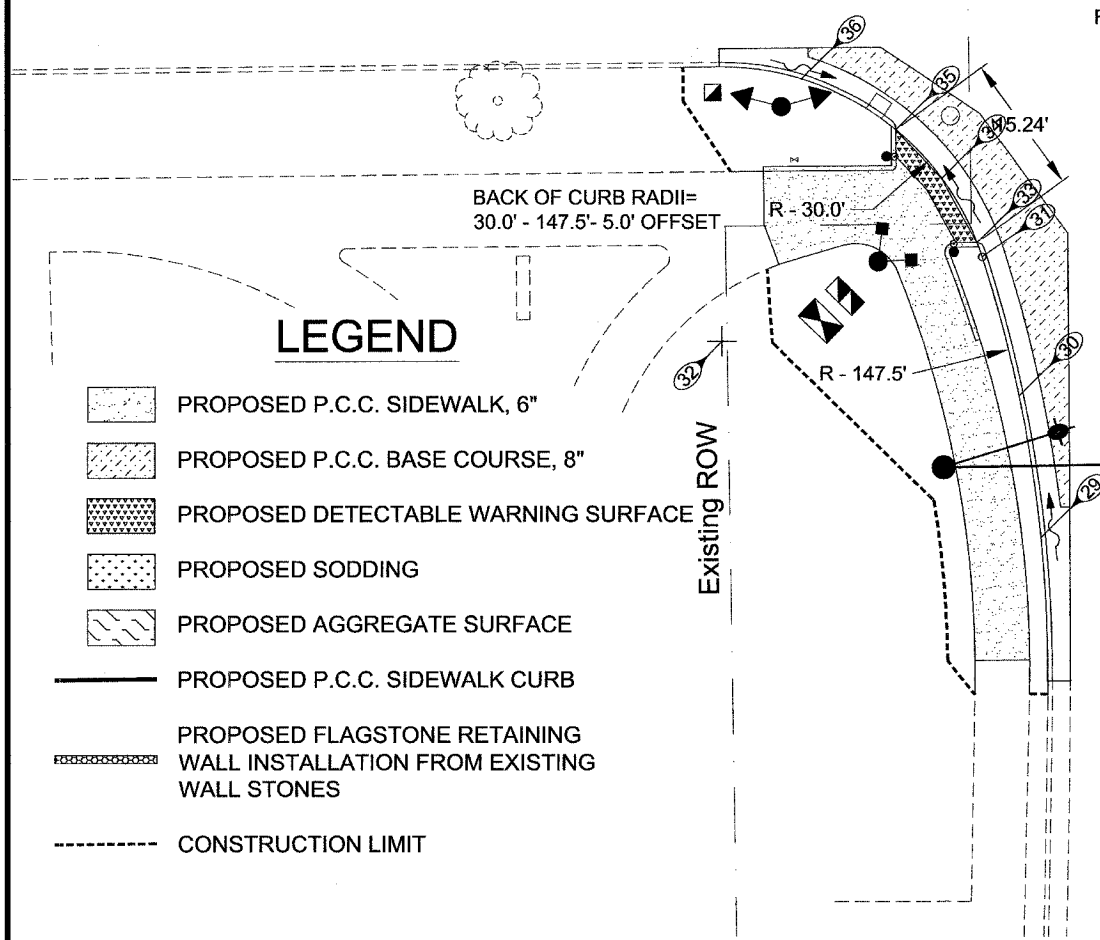
SEE REMOVAL PLAN FOR ADDITIONAL INFORMATION

SEE SIDEWALK DETAIL SHEETS FOR ADDITIONAL ELEVATION AND LAYOUT INFORMATION



PENNSYLVANIA AVE

MILLING AND RESURFACING, 2" DEPTH FROM STATION 100+11 TO 106+89 AND 15+35 TO 47+50 TO BE DONE BY OTHERS



LEGEND

- PROPOSED P.C.C. SIDEWALK, 6"
- PROPOSED P.C.C. BASE COURSE, 8"
- PROPOSED DETECTABLE WARNING SURFACE
- PROPOSED SODDING
- PROPOSED AGGREGATE SURFACE
- PROPOSED P.C.C. SIDEWALK CURB
- PROPOSED FLAGSTONE RETAINING WALL INSTALLATION FROM EXISTING WALL STONES
- CONSTRUCTION LIMIT

NO.	DESCRIPTION	STATION	OFFSET	ELEV.
NORTHWEST QUADRANT				
1	RAD. PT. - 4.0'	103+18.00	18.40' LT.	----
2	RAD. PT. - 8.0'	103+30.17	23.92' LT.	----
3	RAD. PT. - 28.0'	103+72.66	49.91' LT.	----
4	B.O.C. - P.C.C.	103+80.04	22.90' LT.	747.06
5	B.O.C. - DEPR.	103+88.79	27.02' LT.	746.51
6	B.O.C. - DEPR.	21+18.19	25.78' LT.	746.42
7	B.O.C.	21+27.50	21.43' LT.	746.89
8	B.O.C. - P.T.	21+34.50	20.54' LT.	746.95
NORTHEAST QUADRANT				
9	B.O.C.	21+34.84	21.76' RT.	747.17
10	B.O.C.	21+27.56	23.38' RT.	747.12
11	B.O.C. - DEPR.	21+23.02	24.77' RT.	746.60
12	B.O.C. - DEPR.	21+17.41	26.92' RT.	746.52
13	RAD. PT. - 27.0'	104+72.95	43.00' LT.	----
14	B.O.C. - DEPR.	104+52.28	25.62' LT.	746.42
15	B.O.C. - DEPR.	104+56.28	21.76' LT.	746.34
16	B.O.C.	104+65.88	16.94' LT.	746.66

NO.	DESCRIPTION	STATION	OFFSET	ELEV.
SOUTHEAST QUADRANT				
17	B.O.C. - TAPER	105+21.00	20.00' RT.	746.00
18	B.O.C. - P.C.C.	104+93.89	20.00' RT.	746.29
19	B.O.C.	104+82.55	20.54' RT.	746.40
20	B.O.C.	104+71.32	22.14' RT.	746.51
21	B.O.C. - P.C.C.	104+60.28	24.80' RT.	746.62
22	RAD. PT. - 20.0'	104+65.88	44.00' RT.	----
23	B.O.C. - DEPR.	104+56.28	26.46' RT.	746.23
24	B.O.C. - DEPR.	104+52.28	29.38' RT.	746.33
25	B.O.C. - DEPR.	20+51.70	27.10' RT.	746.49
26	B.O.C. - DEPR.	20+46.71	24.93' RT.	746.56
27	E.O.G. @ B-6.18	20+46.57	22.82' RT.	746.62
28	B.O.C. - P.T.	20+41.30	24.18' RT.	747.11
SOUTHWEST QUADRANT				
29	B.O.C.	20+11.20	21.96' LT.	747.79
30	B.O.C.	20+26.76	24.10' LT.	747.47
31	B.O.C. - P.C.C.	20+42.00	27.88' LT.	747.15
32	RAD. PT. - 30.0'	20+33.24	56.58' LT.	----
33	B.O.C. - DEPR.	20+43.58	28.41' LT.	746.67
34	B.O.C. - DEPR.	20+50.68	32.16' LT.	746.59
35	D.O.C. - DEPR.	103+84.56	28.46' RT.	746.52
36	B.O.C.	103+74.26	22.80' RT.	747.13



LINCOLN-PENNSYLVANIA TRAFFIC SIGNAL INSTALLATION
City Section 04-00396-00-TL

Design/ACAD by: JLS
Approved by: WRG
Date: 12/30/05

CONSTRUCTION PLAN
H:\smith\LINC PENNSIGNAL\LincolnPenn6ConstPlan.dwg

TOTAL SHEETS: 12
SHEET NO.: 6