



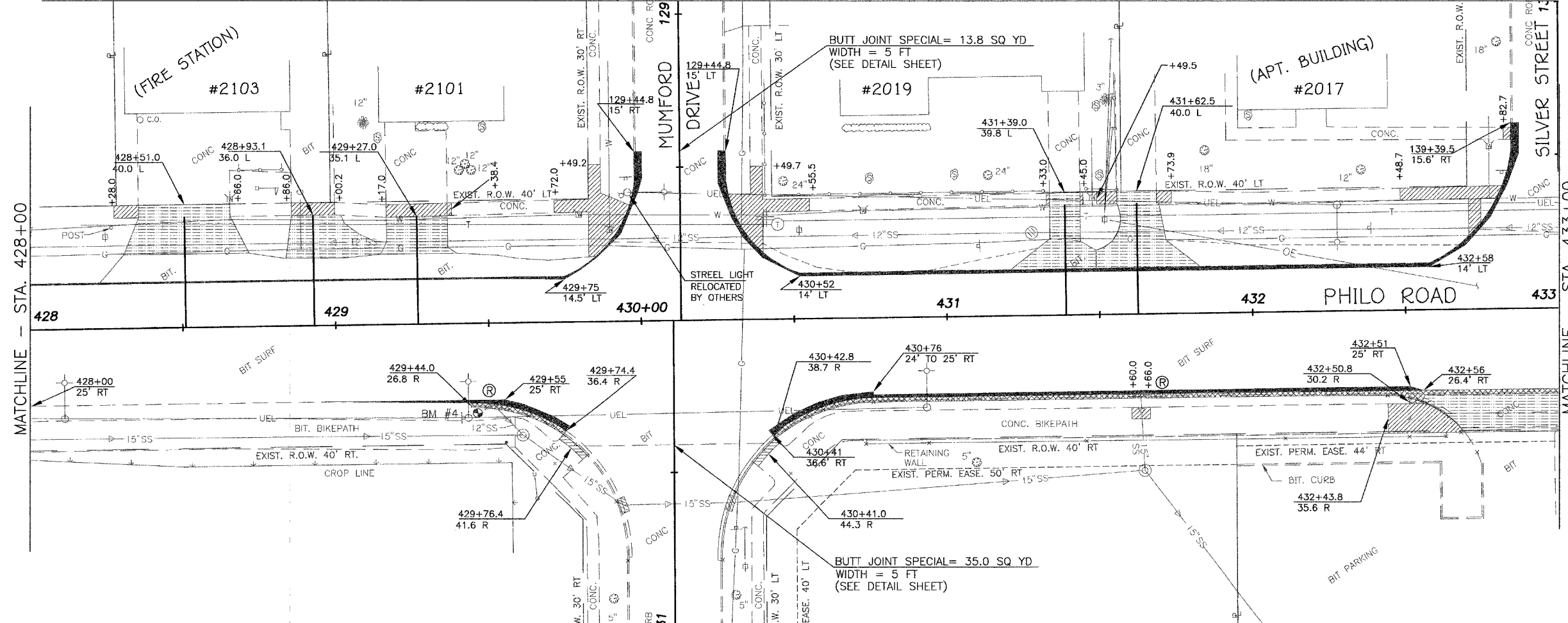
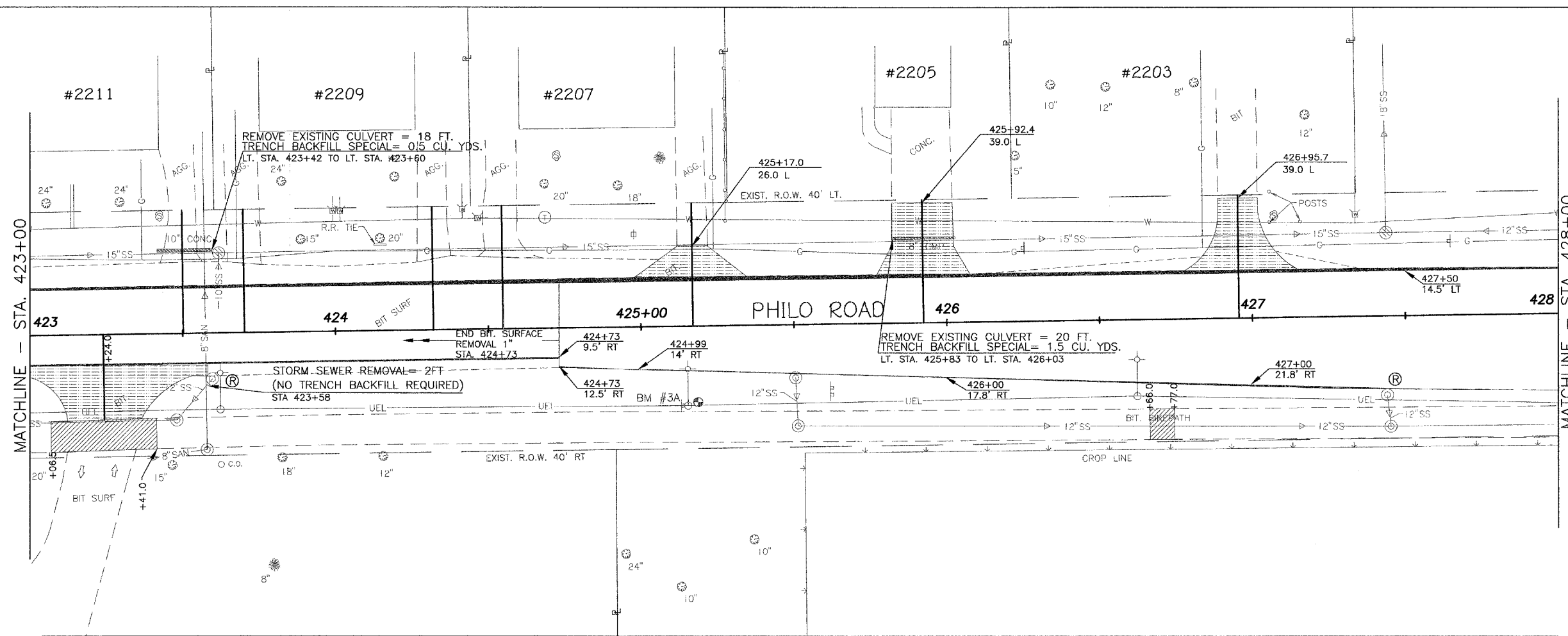
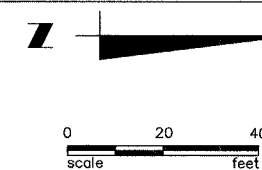
CITY OF URBANA  
PUBLIC WORKS  
ENGINEERING DIVISION

DRAWN BY: NFR  
CHECKED BY: GJJ

DESIGNED BY: CES  
CITY SECTION  
95-00305-01 - PV

Philo Road Improvements  
Removal/Relocation Plan  
Sta 423+00 to Sta 433+00

SHEET NO.  
23  
OF  
62



- LEGEND**
- STRUCTURE TO BE REMOVED
  - DRIVEWAY PAVEMENT REMOVAL
  - PAVEMENT REMOVAL
  - SIDEWALK OR BIKEPATH REMOVAL
  - CURB REMOVAL
  - PAVEMENT REMOVAL, SPECIAL

ALL VARIOUS SIGNS WHICH INTERFERE WITH CONSTRUCTION OPERATIONS SHALL BE REMOVED AND RELOCATED AS DIRECTED BY THE ENGINEER. SEE SPECIAL PROVISIONS.

SEE PLAN AND PROFILE SHEETS AND DRAINAGE STRUCTURE SCHEDULES FOR STRUCTURE REMOVAL INFORMATION.