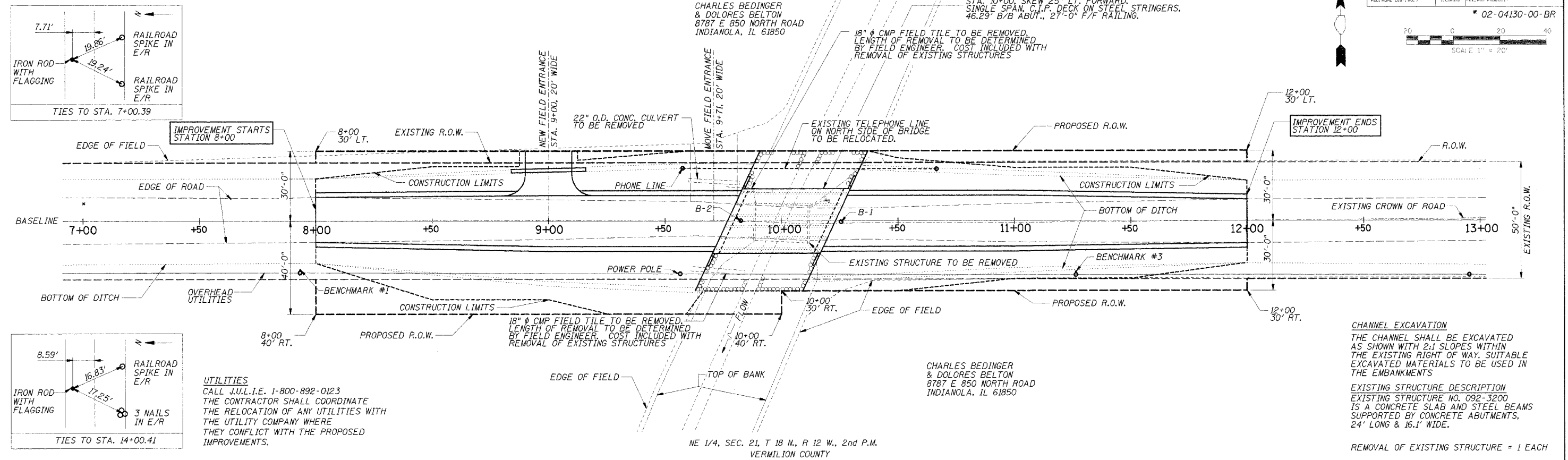
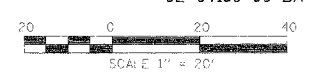


BM #1 - R.R. SPIKE IN TIMBER POST STA 7+98.5, 22.5' RT., ELEV. 100.55
 BM #2 - CHISELED " IN SOUTHWEST CORNER OF BRIDGE - ELEV. 100.02
 BM #3 - R.R. SPIKE IN TIMBER POST STA 11+26.5, 23.5' RT., ELEV. 101.11

NE 1/4, SEC. 21, T 18 N., R 12 W., 2nd P.M.
 VERMILION COUNTY

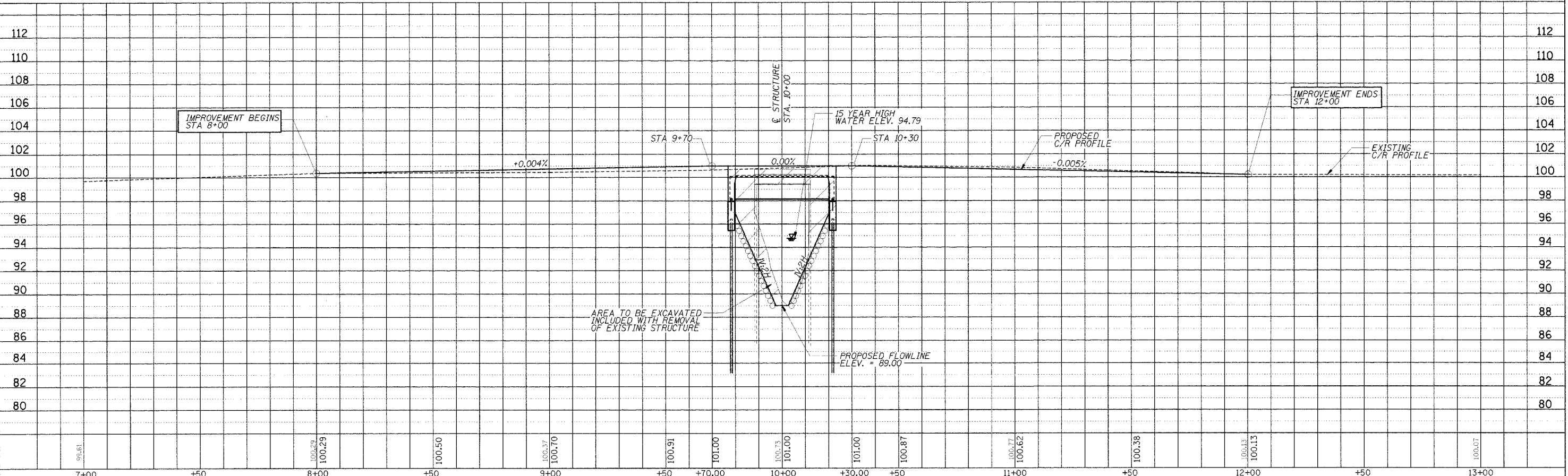
ROUTE NO.	SECTION	COUNTY	TOTAL SHEETS	SHEET NO.
TR 373	*	VERMILION	19	4



CHANNEL EXCAVATION
 THE CHANNEL SHALL BE EXCAVATED AS SHOWN WITH 2:1 SLOPES WITHIN THE EXISTING RIGHT OF WAY. SUITABLE EXCAVATED MATERIALS TO BE USED IN THE EMBANKMENTS

EXISTING STRUCTURE DESCRIPTION
 EXISTING STRUCTURE NO. 092-3200 IS A CONCRETE SLAB AND STEEL BEAMS SUPPORTED BY CONCRETE ABUTMENTS, 24' LONG & 16.1' WIDE.

REMOVAL OF EXISTING STRUCTURE = 1 EACH



PLAN & PROFILE STA. 7+00 TO STA. 13+00