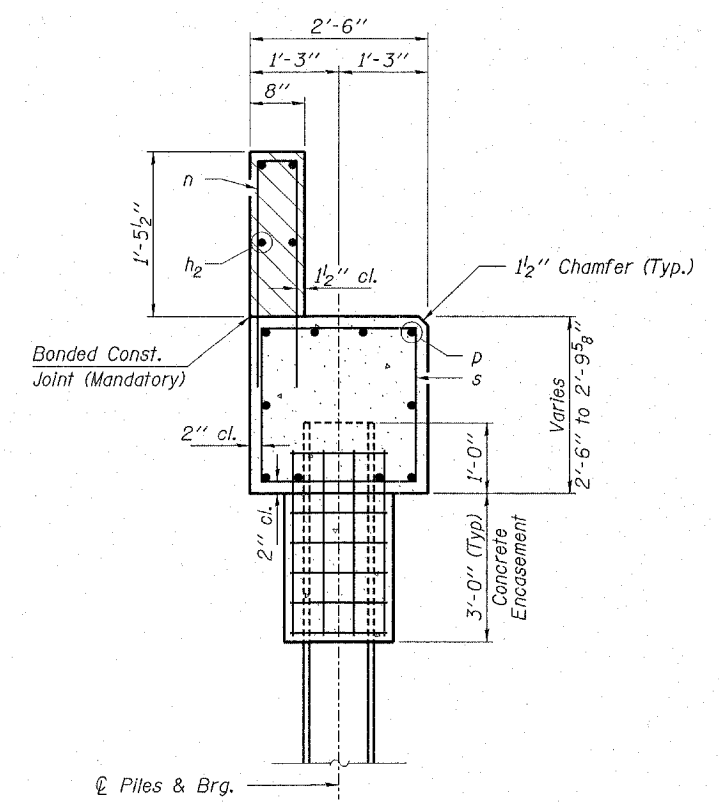
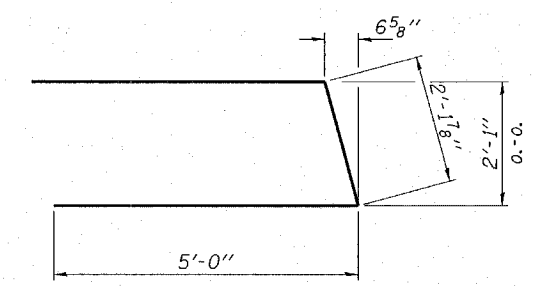


PLAN

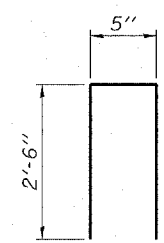


SECTION A-A

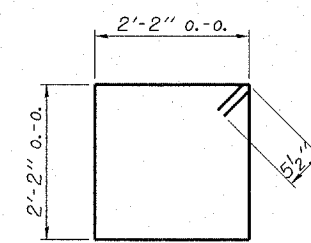
Hatched area to be poured after beams are in place.



BAR u

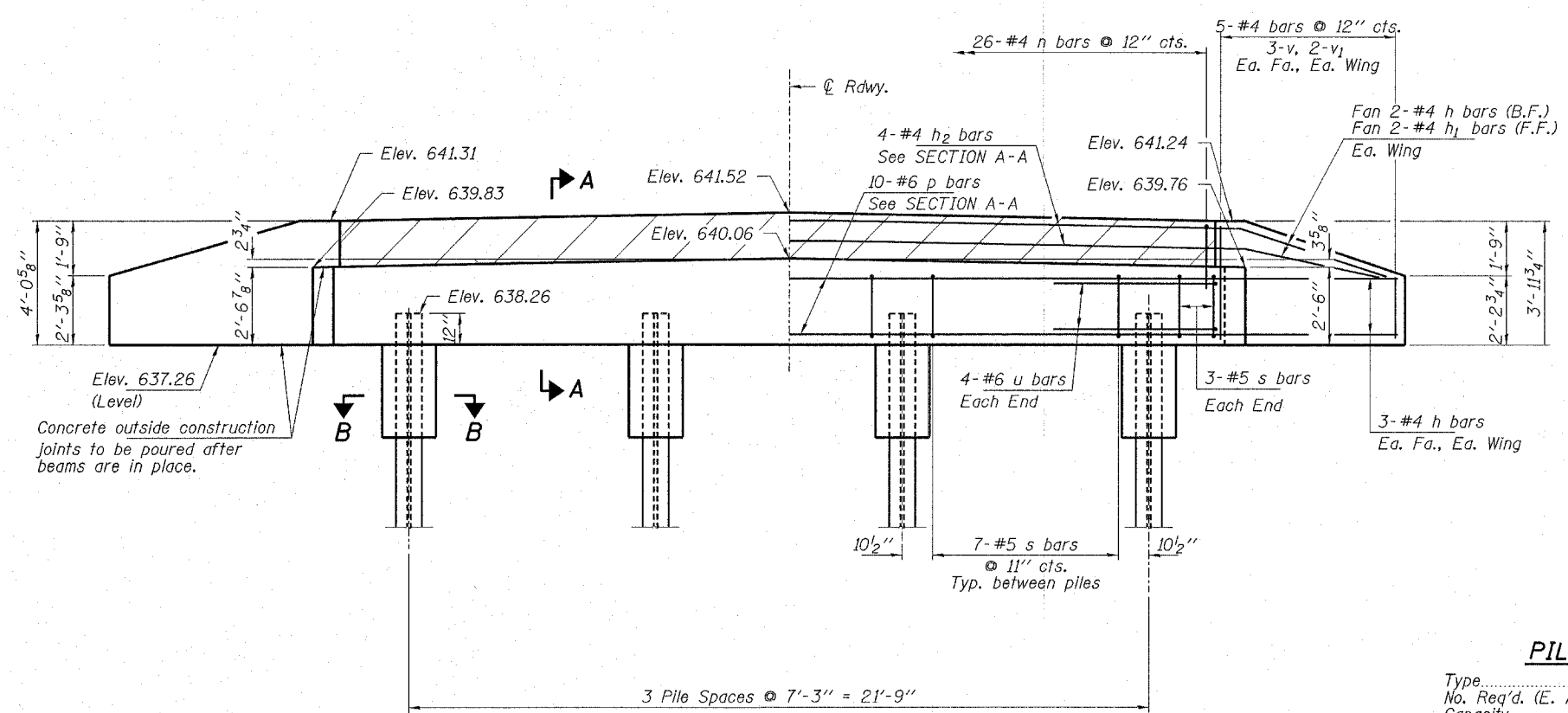


BAR n

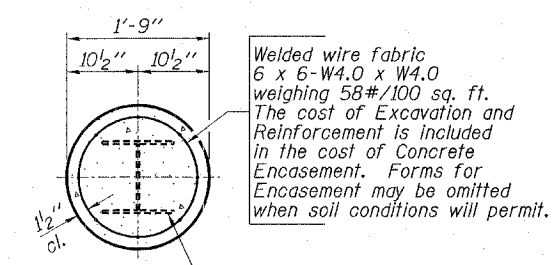


BAR s

Note: Extend h bars into abut. cap.



ELEVATION



SECTION B-B

Steel Pile HP10x42

BILL OF MATERIAL - EAST ABUT.

BAR	NO.	SIZE	LENGTH	SHAPE
h	16	#4	5'-3"	—
h ₁	4	#4	4'-3"	—
h ₂	4	#4	26'-1"	—
n	26	#4	5'-5"	□
p	10	#6	26'-1"	—
s	27	#5	9'-7"	□
u	8	#6	12'-2"	—
v	12	#4	3'-1"	—
v ₁	8	#4	2'-1"	—
Concrete Structures			Cu. Yd.	8.5
Reinforcement Bars			Pound	1,080
Steel Piles HP10x42			Foot	105
Test Pile Steel HP10x42			Each	1
Concrete Encasement			Cu. Yd.	1.0

PILE DATA

Type.....Steel HP10x42
 No. Req'd. (E. Abut.).....4*
 Capacity.....31 Ton/Pile
 Est. Length.....35 Feet/Pile

* Includes one test pile to be driven in a permanent location at each Abutment.

HLR
 Rice, Berry and Associates
 A Division of Hampton,
 Lenzini and Renwick, Inc.
 Civil & Structural Engineers
 3085 Stevenson Drive
 Suite 201
 Springfield, Illinois 62703
 217-546-3400
 P.O. Box 1036
 DuQuoin, Illinois 62832
 618-790-4637
 Account Number 12-87-0014-1
 Date: 01/20/06
 DESIGNED: T.P.L. CHECKED: S.W.M. DRAWN: D.T.M.

EAST ABUTMENT
SECTION 03-17116-00-BR
RIDGE ROAD DISTRICT
SHELBY COUNTY
STRUCTURE NO. 087-3541 / STATION 79+80