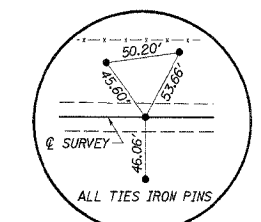


ROUTE	SECTION	COUNTY	TOTAL SHEETS	SHEET NO.
C.H. 5	03-0008	CHRISTIAN	12	3
F.A.S. 639	-00-BR			
STA. 10+00		TO STA. 20+00		
ILLINOIS			CONTRACT NO. 93402	



P.O.T. STA. 19+97.79
IRON PIN (FLUSH)

EXISTING S.N. 011-3009

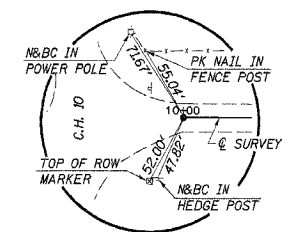
3 SPAN STEEL I-BEAM BRIDGE WITH CONCRETE SLAB AT 21'-0", 26'-3", 21'-0" ON PRECAST CONCRETE PILE BENT PIERS AND SPILL THRU CONCRETE ABUTMENTS; 24'-0" ROADWAY; 26'-0" O.-O. DECK; 72'-5" BK.-BK. ABUTS.; 25° LT. SKEW

REMOVAL OF EXISTING STRUCTURES = 1 EACH

BURIED CABLE

ILLINOIS CONSOLIDATED TELEPHONE CO. MATTOON, IL.

SE 1/4, SE 1/4, SEC. 3, T. 11 N., R. 3 W., 3RD P.M.
JENNIE McWARD



P.O.T. STA. 10+00.00
IRON PIN (FLUSH)

STA. 15+00 - SPECIAL BRIDGE DESIGN
PRECAST PRESTRESSED CONCRETE
DECK BEAM BRIDGE, ONE SPAN AT 77'-0",
30'-0" ROADWAY, SKEW = 25° LT.

F.E. LT. STA. 17+33
PIPE CULVERTS, CLASS D,
TYPE 1, 18" X 34' LONG

IMPROVEMENT BEGINS
STA. 12+75

IMPROVEMENT ENDS
STA. 17+50

CHANNEL EXCAVATION

THE CHANNEL SHALL BE EXCAVATED AS SHOWN WITHIN THE LIMITS OF THE PROPOSED STRUCTURE THEN TAPER TO THE EXISTING CHANNEL AT THE R.O.W. LINES. SUITABLE EXCAVATED MATERIAL TO BE USED IN THE EMBANKMENT AS DIRECTED BY THE ENGINEER.

CHANNEL EXCAVATION = 110 CU. YD.

PIPES TO BE REMOVED
(INCIDENTAL TO "EARTH EXCAVATION")
LT. STA. 17+33, 18" CMP, 30' LONG

ENTRANCES TO BE BUILT
LT. STA. 17+33, F.E. -6.3%, 18' ROADBED

EARL D. CHRISMAN
SW 1/4, SW 1/4, SEC. 2, T. 11 N., R. 3 W., 3RD P.M.

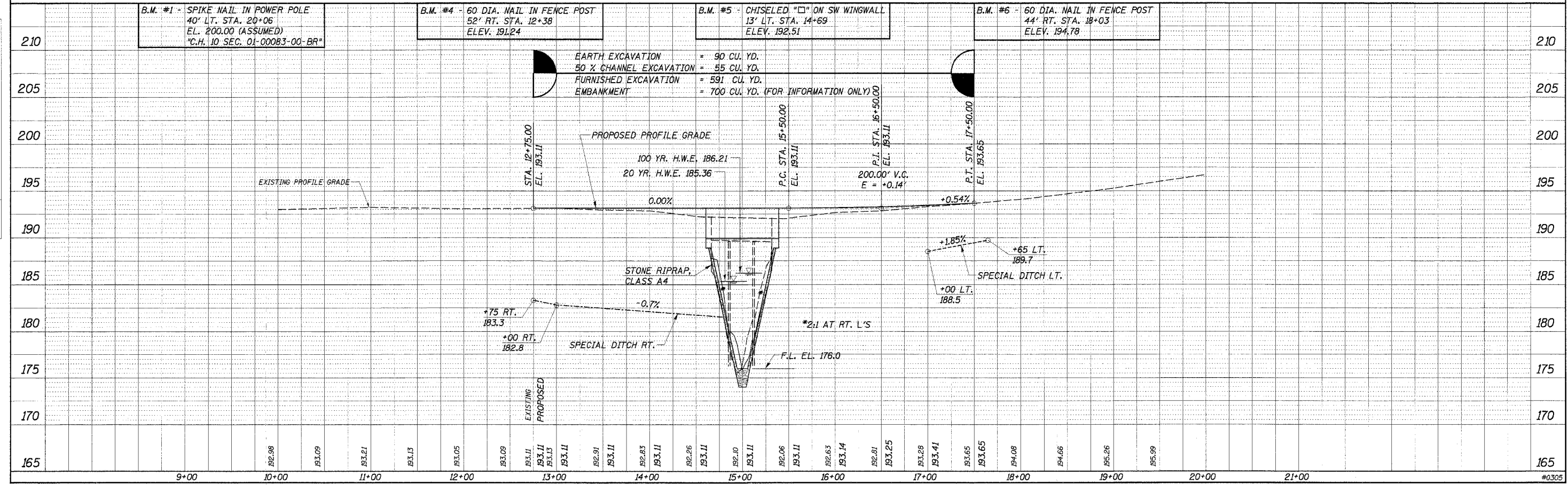
B.M. #1 - SPIKE NAIL IN POWER POLE
40' LT. STA. 20+06
EL. 200.00 (ASSUMED)
"C.H. 10 SEC. 01-00083-00-BR"

B.M. #4 - 60 DIA. NAIL IN FENCE POST
52' RT. STA. 12+38
ELEV. 191.24

B.M. #5 - CHISELED "□" ON SW WINGWALL
13' LT. STA. 14+69
ELEV. 192.51

B.M. #6 - 60 DIA. NAIL IN FENCE POST
44' RT. STA. 18+03
ELEV. 194.78

EARTH EXCAVATION = 90 CU. YD.
50% CHANNEL EXCAVATION = 55 CU. YD.
FURNISHED EXCAVATION = 591 CU. YD.
EMBANKMENT = 700 CU. YD. (FOR INFORMATION ONLY)



DATE	BY	REVISION

DATE	BY	REVISION