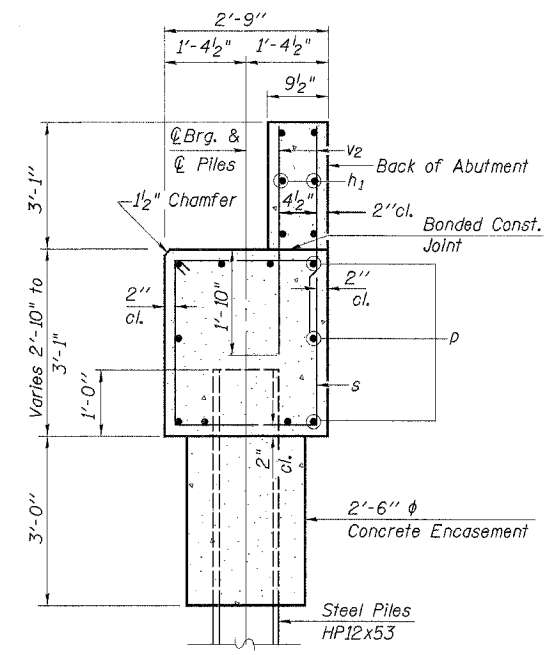
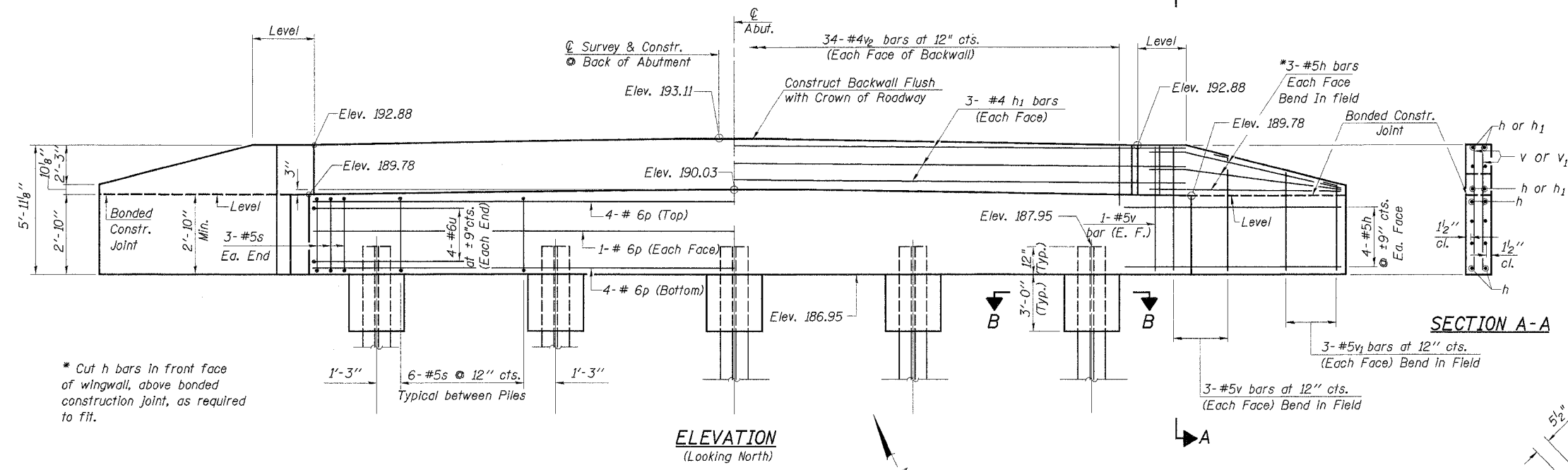


ROUTE NO.	SECTION	COUNTY	TOTAL SHEETS	SHEET NO.
C.H. 5 FAS 639	03-00087 -00-BR	CHRISTIAN	12	9

ILLINOIS
CONTRACT NO. 93402

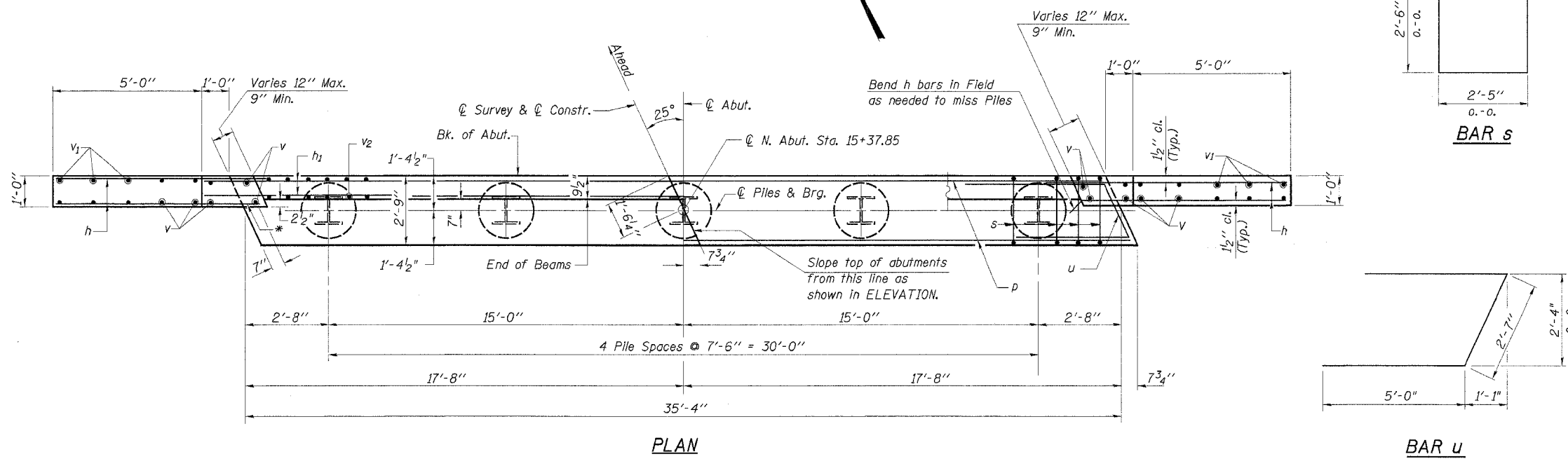
NOTE: After beams are in place and dowel rods grouted, the backwall and the portions of the wingwall above the bonded construction joint shall be poured.



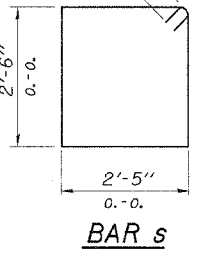
SECTION THRU ABUTMENT
(At Right L's)

BILL OF MATERIAL - N. ABUT.

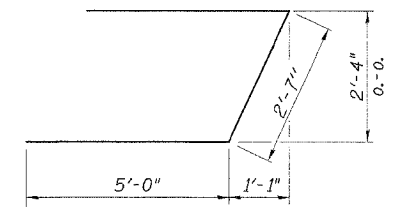
BAR	NO.	SIZE	LENGTH	SHAPE
h	28	#5	7'-6"	—
h ₁	6	#4	35'-0"	—
p	10	#6	35'-0"	—
s	30	#5	10'-9"	□
u	8	#6	12'-7"	—
v	16	#5	5'-8"	—
v ₁	12	#5	4'-6"	—
v ₂	68	#4	4'-9"	—
Concrete Structures			Cu. Yd.	16.1
Reinforcement Bars			Pound	1740
Test Pile Steel HP12x53			Each	1
Steel Piles HP12x53			Foot	200
Concrete Encasement			Cu. Yd.	2.8



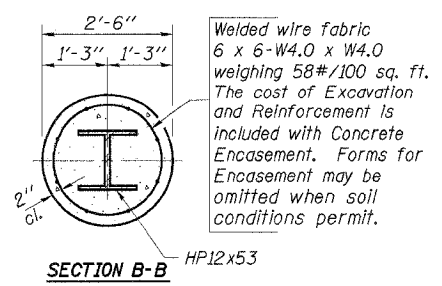
PLAN



BAR s



BAR u



SECTION B-B
HP12x53

PILE DATA

Type _____ Steel HP 12x53
 No. Req'd. _____ 5**
 Capacity _____ Refusal
 Est. Length _____ 50 Feet/Pile

**Includes 1 test pile to be driven in a permanent location at the North Abutment.

DESIGNED	FJS
CHECKED	SFM
DRAWN	SAP & KTR
CHECKED	SFM

NORTH ABUTMENT
 COUNTY HIGHWAY 5
 SECTION 03-00087-00-BR
 CHRISTIAN COUNTY
 STATION 15+00

4440 ASH GROVE SPRINGFIELD, IL 62707 (217) 793-8600 oasinc@famvid.com	OZYURT AND STONE, INC. CONSULTING ENGINEERS	JOB NO.: 0305 FILE: N.ABUT.DGN DATE: 03-15-04
--	---	---