

COUNTY	ROUTE	SECTION	SHT. NO.
ADAMS	FAS 1588	05-00189-00-BR	21 OF 38

STA. 405+00 TO STA. 410+00
LOCATION #2 STRUCTURE NO. 001-3028

SECTION 32 T. 1S R. 5W OF THE 4th P.M.

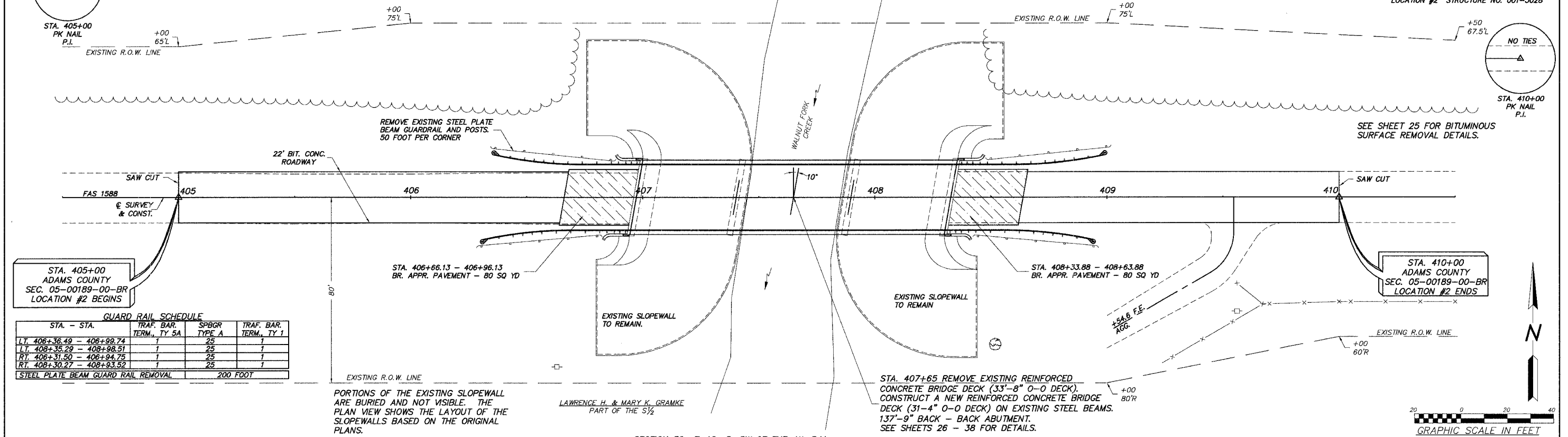
LAWRENCE H. & MARY K. GRAMKE
PART OF THE S 1/2



NO TIES
STA. 405+00
PK NAIL
P.I.



NO TIES
STA. 410+00
PK NAIL
P.I.



STA. 405+00
ADAMS COUNTY
SEC. 05-00189-00-BR
LOCATION #2 BEGINS

STA. 410+00
ADAMS COUNTY
SEC. 05-00189-00-BR
LOCATION #2 ENDS

GUARD RAIL SCHEDULE

STA. - STA.	TRAF. BAR. TERM., TY SA	SPBOR TYPE A	TRAF. BAR. TERM., TY 1
LT. 406+36.49 - 406+98.74	1	25	1
LT. 408+35.29 - 408+98.51	1	25	1
RT. 406+31.50 - 406+94.75	1	25	1
RT. 408+30.27 - 408+93.52	1	25	1

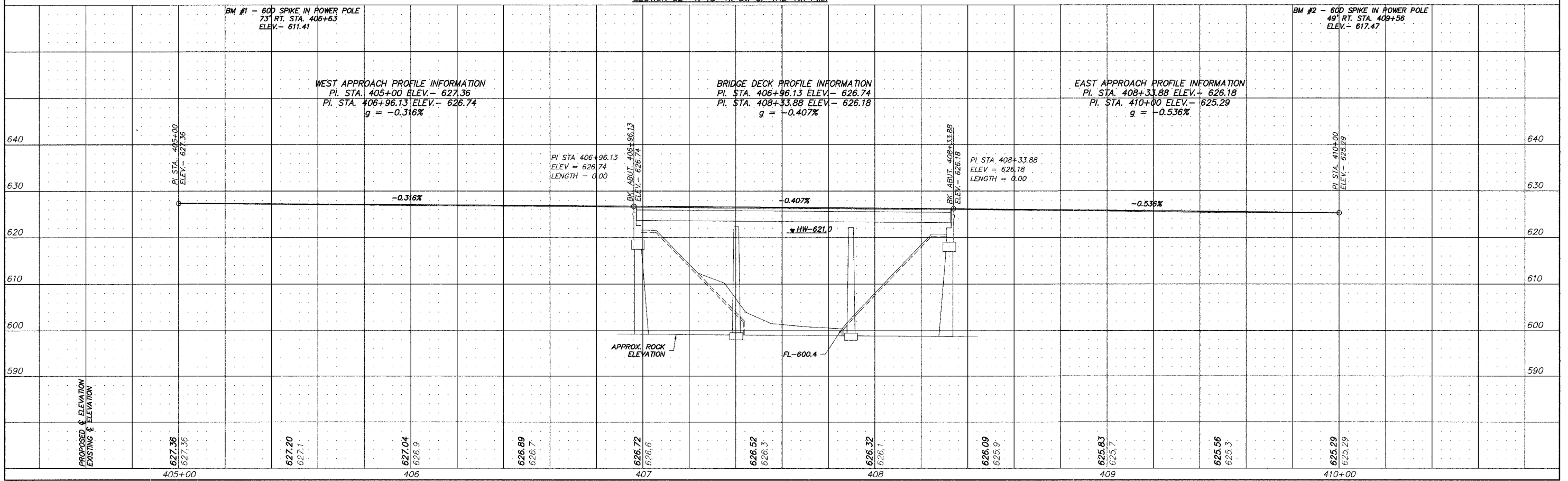
STEEL PLATE BEAM GUARD RAIL REMOVAL 200 FOOT

PORTIONS OF THE EXISTING SLOPEWALL ARE BURIED AND NOT VISIBLE. THE PLAN VIEW SHOWS THE LAYOUT OF THE SLOPEWALLS BASED ON THE ORIGINAL PLANS.

STA. 407+65 REMOVE EXISTING REINFORCED CONCRETE BRIDGE DECK (33'-8" O-O DECK). CONSTRUCT A NEW REINFORCED CONCRETE BRIDGE DECK (31'-4" O-O DECK) ON EXISTING STEEL BEAMS. 137'-9" BACK - BACK ABUTMENT. SEE SHEETS 26 - 38 FOR DETAILS.



SECTION 32 T. 1S R. 5W OF THE 4th P.M.



BM #1 - 60D SPIKE IN POWER POLE
73' RT. STA. 406+63
ELEV. - 611.41

BM #2 - 60D SPIKE IN POWER POLE
49' RT. STA. 409+56
ELEV. - 617.47

WEST APPROACH PROFILE INFORMATION
PI. STA. 405+00 ELEV. - 627.36
PI. STA. 406+96.13 ELEV. - 626.74
g = -0.316%

BRIDGE DECK PROFILE INFORMATION
PI. STA. 406+96.13 ELEV. - 626.74
PI. STA. 408+33.88 ELEV. - 626.18
g = -0.407%

EAST APPROACH PROFILE INFORMATION
PI. STA. 408+33.88 ELEV. - 626.18
PI. STA. 410+00 ELEV. - 625.29
g = -0.536%

PROPOSED ELEVATION
EXISTING ELEVATION