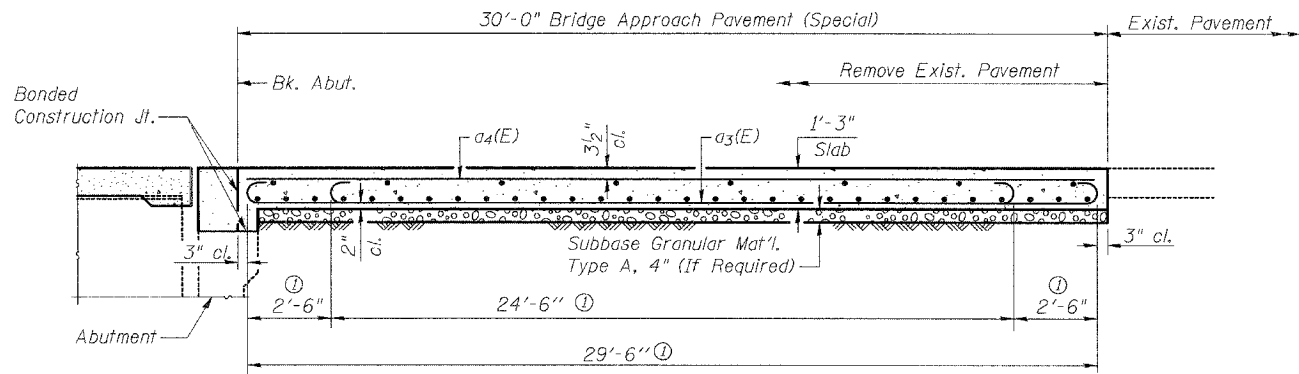
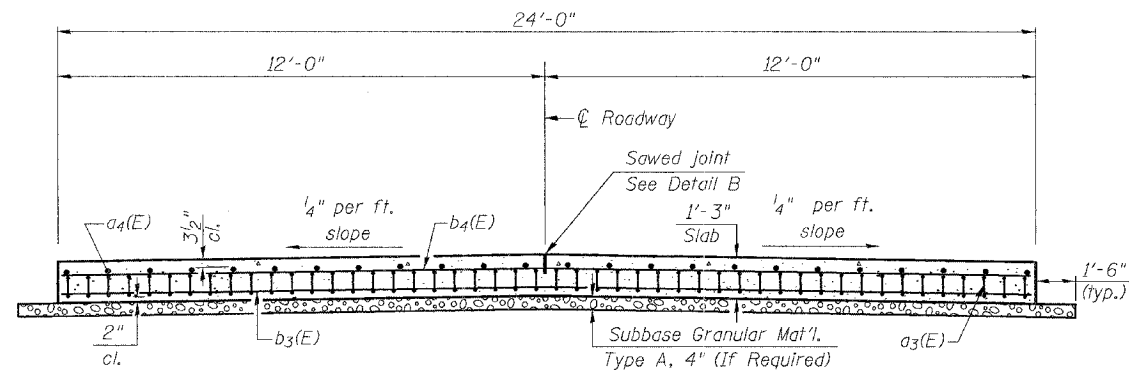


ROUTE NO. FAS RTE 1588	SEC *	COUNTY ADAMS	TOTAL SHEETS 38	SHEET NO. 37
------------------------------	----------	-----------------	--------------------	-----------------

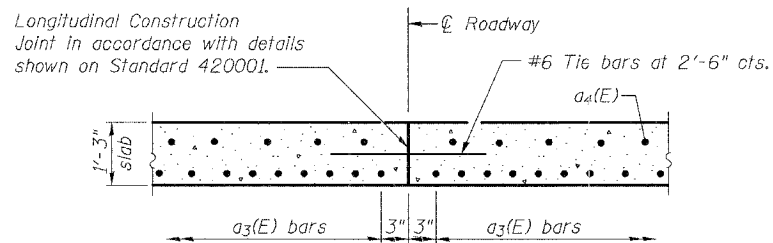
ILL. ROAD DIST. NO. 7 ILLINOIS PROJECT
Location #2 Structure No. 001-3028
*05-00189-00-BR



SECTION C-C
① Stagger $a_3(E)$ bars as shown on plan - full width



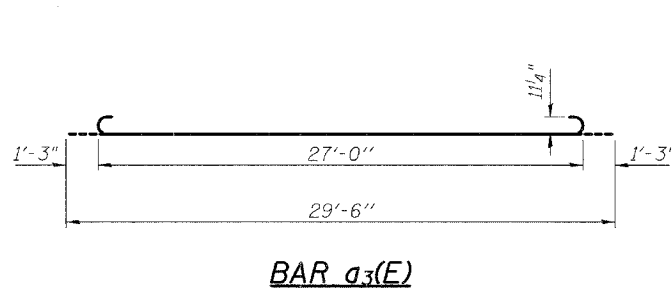
SECTION D-D
(See Plan for Dimensions not shown)



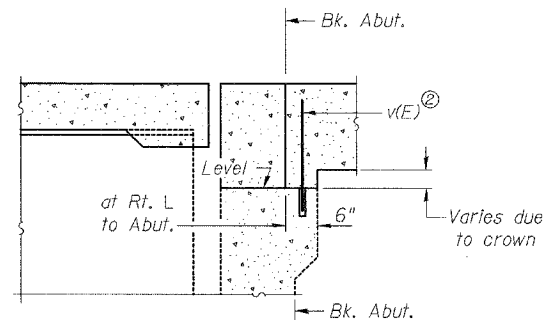
OPTIONAL LONGITUDINAL CONSTRUCTION JOINT

As approved by the Engineer, the Contractor may elect to reduce the width of pour by use of the Optional Longitudinal Construction Joint shown. Joints shall be located at ϕ roadway.

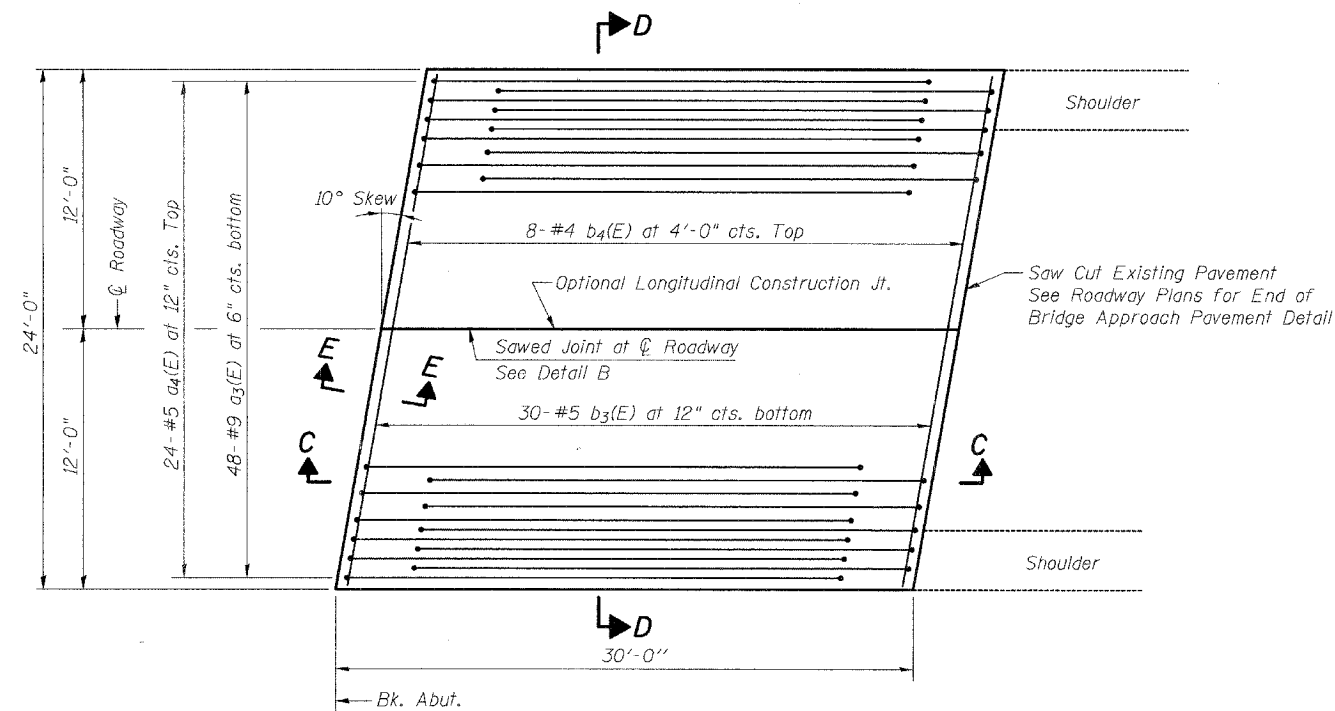
Notes:
Reinforcement bars designated (E) shall be epoxy coated.
Cost of reinforcement bars, epoxy coated, concrete, sub-base granular material Type A, pavement removal, excavation to bottom of sub-base and optional longitudinal construction joint are included in the cost of "Bridge Approach Pavement (Special)".
Provisions of Section 420 of Std. Specification shall apply.



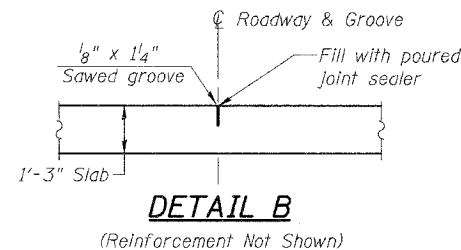
BAR $a_3(E)$



SECTION E-E
② $v(E)$ bars are billed with the superstructure. See Sheets #4 and #5 of 13.



PLAN
(East Bridge Approach Pavement shown, West Bridge Approach Pavement the same, except opposite hand)



DETAIL B
(Reinforcement Not Shown)

BRIDGE APPROACH PAVEMENT (SPECIAL)
BILL OF MATERIAL
(For one approach)

Bar	No.	Size	Length	Shape
$a_3(E)$	48	#9	29'-6"	
$a_4(E)$	24	#5	29'-6"	
$b_3(E)$	30	#5	23'-10"	
$b_4(E)$	8	#4	23'-10"	
Reinforcement Bars, Epoxy Coated			POUND	6,430

DESIGN STRESSES

$f_y = 60,000$ p.s.i.
 $f'_c = 3,500$ p.s.i.

REV. NO.	DRAWN	CHKD.	APPD.	DESCRIPTION	DATE
	BGJ				12/05

F.A.S. RTE. 1588 OVER WALNUT CREEK
SECTION 05-00189-00-BR
Project RS-1588 (106)
ADAMS COUNTY

BRIDGE APPROACH PAVEMENT (SPECIAL)
STRUCTURE NUMBER 001-3028
STATION 407+65