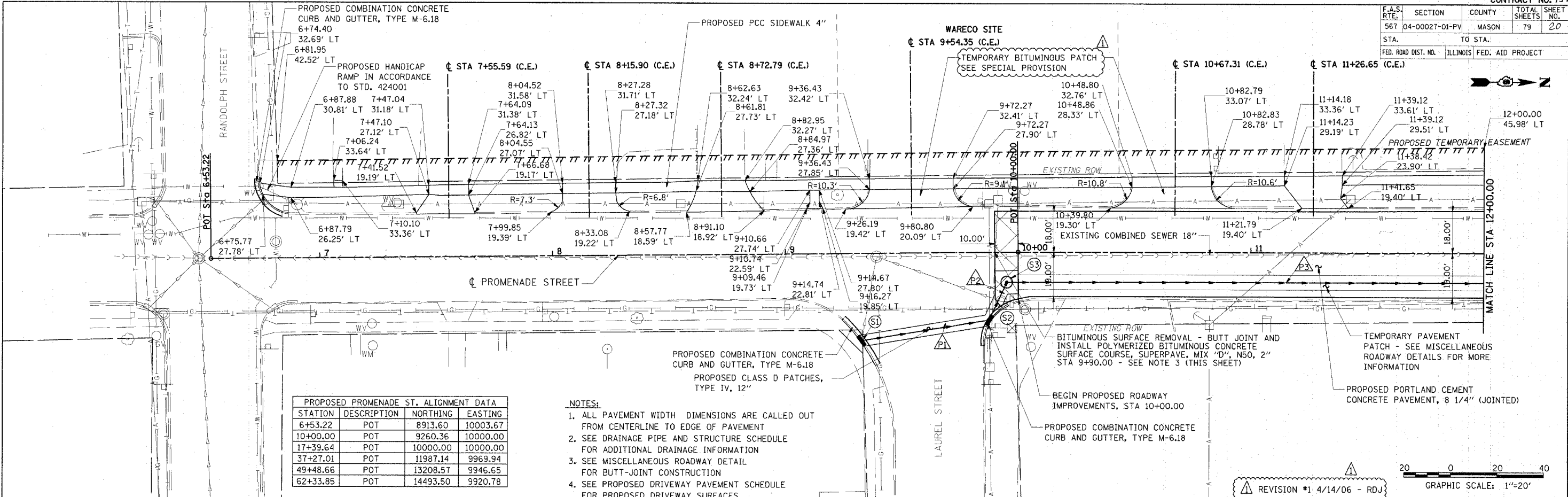
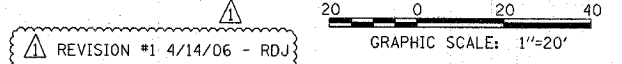


| F.A.S. RTE.         | SECTION        | COUNTY                    | TOTAL SHEETS | SHEET NO. |
|---------------------|----------------|---------------------------|--------------|-----------|
| 567                 | 04-00027-01-PV | MASON                     | 79           | 20        |
| STA.                |                | TO STA.                   |              |           |
| FED. ROAD DIST. NO. |                | ILLINOIS FED. AID PROJECT |              |           |

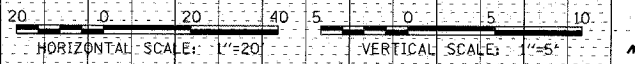
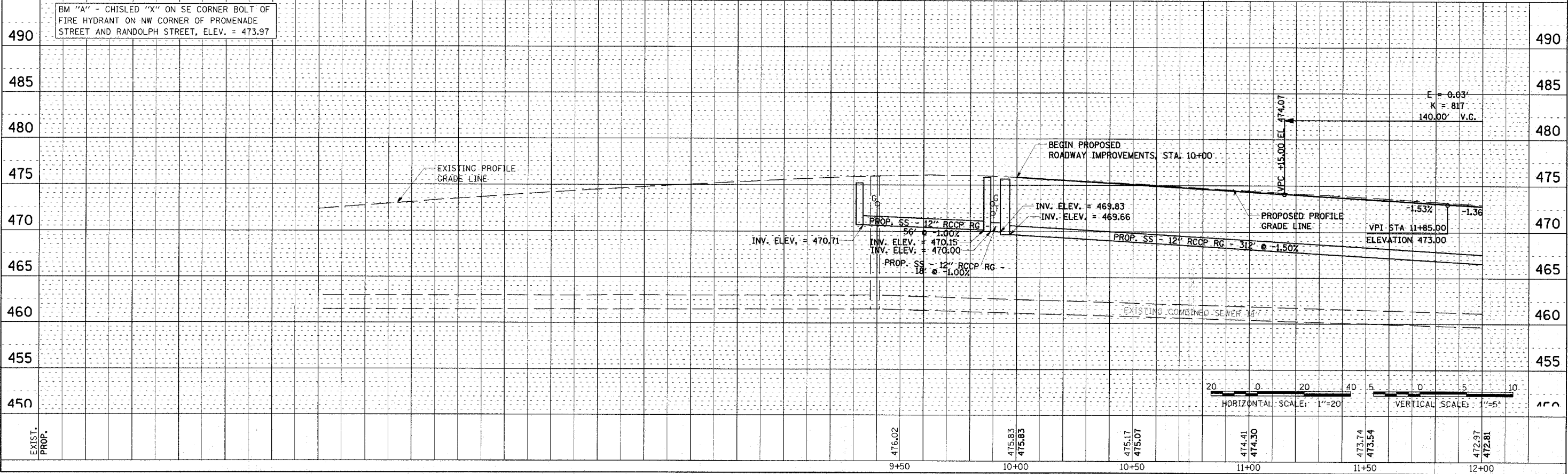


| STATION  | DESCRIPTION | NORTHING | EASTING  |
|----------|-------------|----------|----------|
| 6+53.22  | POT         | 8913.60  | 10003.67 |
| 10+00.00 | POT         | 9260.36  | 10000.00 |
| 17+39.64 | POT         | 10000.00 | 10000.00 |
| 37+27.01 | POT         | 11987.14 | 9969.94  |
| 49+48.66 | POT         | 13208.57 | 9946.65  |
| 62+33.85 | POT         | 14493.50 | 9920.78  |

- NOTES:**
1. ALL PAVEMENT WIDTH DIMENSIONS ARE CALLED OUT FROM CENTERLINE TO EDGE OF PAVEMENT
  2. SEE DRAINAGE PIPE AND STRUCTURE SCHEDULE FOR ADDITIONAL DRAINAGE INFORMATION
  3. SEE MISCELLANEOUS ROADWAY DETAIL FOR BUTT-JOINT CONSTRUCTION
  4. SEE PROPOSED DRIVEWAY PAVEMENT SCHEDULE FOR PROPOSED DRIVEWAY SURFACES



BM "A" - CHISLED "X" ON SE CORNER BOLT OF FIRE HYDRANT ON NW CORNER OF PROMENADE STREET AND RANDOLPH STREET, ELEV. = 473.97



|      |    |
|------|----|
| DATE | BY |
| DATE | BY |
| DATE | BY |
| DATE | BY |
| DATE | BY |

|      |    |
|------|----|
| DATE | BY |
| DATE | BY |
| DATE | BY |
| DATE | BY |
| DATE | BY |

|      |    |
|------|----|
| DATE | BY |
| DATE | BY |
| DATE | BY |
| DATE | BY |
| DATE | BY |

01:24:48 PM  
2/13/2006, 01:24 PM  
I:\04-0005\04520140\CADD\ROAD\ROAD\SHEET.C-701-PPM.DWG