

F.A.S. RTE.	SECTION	COUNTY	TOTAL SHEETS	SHEET NO.
567	04-00027-01-PV	MASON	79	6
STA.	TO STA.			
FED. ROAD DIST. NO.	ILLINOIS	FED. AID PROJECT		

# SUMMARY OF QUANTITIES

CODE NO.	ITEM	UNIT	TOTAL QUANTITY	MASON COUNTY			CITY OF HAVANA	
				I000	J000	SFTY-1A (1)	MFT (2)	LOCAL (3)
42000306	PORTLAND CEMENT CONCRETE PAVEMENT 8 1/4" (JOINTED)	SQ YD	13367		13367			
42300200	PORTLAND CEMENT CONCRETE DRIVEWAY PAVEMENT, 6 INCH	SQ YD	140					140
42300400	PORTLAND CEMENT CONCRETE DRIVEWAY PAVEMENT, 8 INCH	SQ YD	158					158
42400100	PORTLAND CEMENT CONCRETE SIDEWALK 4 INCH	SQ FT	6031		176	237		5619
42400800	DETECTABLE WARNINGS	SQ FT	99			99		
44000100	PAVEMENT REMOVAL	SQ YD	13367		13367			
44000200	DRIVEWAY PAVEMENT REMOVAL	SQ YD	435					435
44000500	COMBINATION CURB AND GUTTER REMOVAL	FOOT	635		547 <sup>Δ</sup>			88
44000600	SIDEWALK REMOVAL	SQ FT	6000.6		5618.3			382.3
44001700	COMBINATION CONCRETE CURB AND GUTTER REMOVAL AND REPLACEMENT	FOOT	500		500			
44201785	CLASS D PATCHES, TYPE I, 12 INCH	SQ YD	8	4				4
44201789	CLASS D PATCHES, TYPE II, 12 INCH	SQ YD	28	28				
44201796	CLASS D PATCHES, TYPE IV, 12 INCH	SQ YD	84	84				
48101200	AGGREGATE SHOULDERS, TYPE B	TON	113	113				
550A2320	STORM SEWERS, RUBBER GASKET, CLASS A, TYPE 1 12"	FOOT	65				56	9
550A2520	STORM SEWERS, RUBBER GASKET, CLASS A, TYPE 2 12"	FOOT	734				715	19
550A2540	STORM SEWERS, RUBBER GASKET, CLASS A, TYPE 2 18"	FOOT	414				387	27
550A2580	STORM SEWERS, RUBBER GASKET, CLASS A, TYPE 2 30"	FOOT	776				776	
56100500	WATER MAIN 4"	FOOT	107					107

- NOTES: (1) MASON COUNTY PEDESTRIAN RAMPS ON EXISTING CURBS  
 (2) CITY OF HAVANA STORM SEWER  
 (3) CITY OF HAVANA WATER MAIN

•SEE SPECIAL PROVISION  
 Δ SPECIALTY ITEMS

REVISIONS	
NAME	DATE
Δ RDJ	4/14/06

ILLINOIS DEPARTMENT OF TRANSPORTATION  
 PROMENADE STREET (C.H. 20)  
 SUMMARY OF QUANTITIES

SCALE: VERT.  
 HORIZ.  
 DATE 11/18/05

DRAWN BY RDJ  
 CHECKED BY RXC

82+201-45 PM  
 04/13/2006, 09:20 PM  
 I:\PROJECTS\10552014\10552014.DWG ADMIN\10552014-13-CALCULATIONS\10552014-SUM-SHEETS.DWG  
 LAYOUT JLW 9/6/05  
 DRAWN RDJ 11/10/05  
 REVIEWED RC 2/3/06

F.A.S. RTE.	SECTION	COUNTY	TOTAL SHEETS	SHEET NO.
567	04-00027-01-PV	MASON	79	9
STA.		TO STA.		
FED. ROAD DIST. NO.		ILLINOIS FED. AID PROJECT		

# SUMMARY OF QUANTITIES

CODE NO.	ITEM	UNIT	TOTAL QUANTITY	MASON COUNTY			CITY OF HAVANA	
				I000	J000	SFTY-1A (1)	MFT (2)	LOCAL (3)
•XX001135	PAVEMENT PATCHING SPECIAL	SQ YD	824				682	142
•XX002816	TEMPORARY LINE STOPPER, 4 INCH	EACH	1					1
Δ •XX002982	GATE VALVES, 6"	EACH	16					16
•XX003822	STORM SEWER REMOVAL, SPECIAL	FOOT	1195					1195
Δ •XX004040	DOMESTIC WATER METER TO BE RELOCATED	EACH	1					1
Δ •XX004690	CONNECTION TO EXISTING WATER MAINS "A" (NON PRESSURE)	EACH	1					1
Δ •XX004691	CONNECTION TO EXISTING WATER MAINS "B" (NON PRESSURE)	EACH	1					1
Δ •XX004692	CONNECTION TO EXISTING WATER MAINS "C" (NON PRESSURE)	EACH	1					1
Δ •XX004693	CONNECTION TO EXISTING WATER MAINS "D" (NON PRESSURE)	EACH	1					1
Δ •XX004694	CONNECTION TO EXISTING WATER MAINS "E" (NON PRESSURE)	EACH	1					1
•XX005450	STORM SEWER WATER MAIN QUALITY 12"	FOOT	68					68
•XX005891	WATER SERVICE RECONNECTIONS	EACH	30					30
•Z0000990	AGGREGATE FOR TEMPORARY ACCESS	TON	544		344			200
•Z0013798	CONSTRUCTION LAYOUT	L SUM	1	0.30	0.30		0.20	0.20
•Z0013825	CONTROLLED LOW-STRENGTH MATERIAL	CU YD	32				32	
•Z0014900	CURB STOPS 3/4"	EACH	31					31
•Z0015000	CURB STOPS 1"	EACH	2					2
•Z0057000	SANITARY SEWER 10"	FOOT	21				21	
+ Z0076600	TRAINEES	HR	500	500				
Δ XX006535	SANITARY SEWERS, WATER MAIN QUALITY 12"	FOOT	26					26

- NOTES: (1) MASON COUNTY PEDESTRIAN RAMPS ON EXISTING CURBS  
 (2) CITY OF HAVANA STORM SEWER  
 (3) CITY OF HAVANA WATER MAIN

•SEE SPECIAL PROVISION  
 + VOR0  
 Δ SPECIALTY ITEMS

REVISIONS		ILLINOIS DEPARTMENT OF TRANSPORTATION
NAME	DATE	
Δ RDJ	4/14/06	PROMENADE STREET (C.H. 20) SUMMARY OF QUANTITIES

SCALE: VERT.      DRAWN BY      RDJ  
 HORIZ.              CHECKED BY      RXC  
 DATE 11/10/18

01:30:19 PM  
 04/13/2006 01:30 PM  
 I:\WORK\0452001\ADMIN\3120113-CALCULATIONS\ADMIN\SQ\_SHEETS.DGN  
 LAYOUT      9/6/05  
 DRAWN      RDJ      11/10/18  
 REVIEWED      RXC      2/3/06

F.A.S. RTE.	SECTION	COUNTY	TOTAL SHEETS	SHEET NO.
667	04-00027-01-PV	MASON	79	10
STA.		TO STA.		
FED. ROAD DIST. NO.	ILLINOIS	FED. AID PROJECT		

# SUMMARY OF QUANTITIES

CODE NO.	ITEM	UNIT	TOTAL QUANTITY	MASON COUNTY			CITY OF HAVANA	
				I000	J000	SFTY-1A (1)	MFT (2)	LOCAL (3)
Δ • X1006536	WATER SERVICE LINE 1" (BORED)	FOOT	58					58
Δ • X1006537	WATER SERVICE LINE 3/4" (BORED)	FOOT	725					725
Δ • X1006538	WATER MAIN 6" (BORED)	FOOT	159					159
Δ • X1006539	WATER MAIN 6" IN CASING (OPEN TRENCH)	FOOT	170					170
• X1006547	TEMPORARY BITUMINOUS PATCH	TON	50	50				

• SEE SPECIAL PROVISION  
 Δ SPECIALTY ITEMS

- NOTES: (1) MASON COUNTY PEDESTRIAN RAMPS ON EXISTING CURBS  
 (2) CITY OF HAVANA STORM SEWER  
 (3) CITY OF HAVANA WATER MAIN

REVISIONS	
NAME	DATE
Δ RDJ	4/14/08

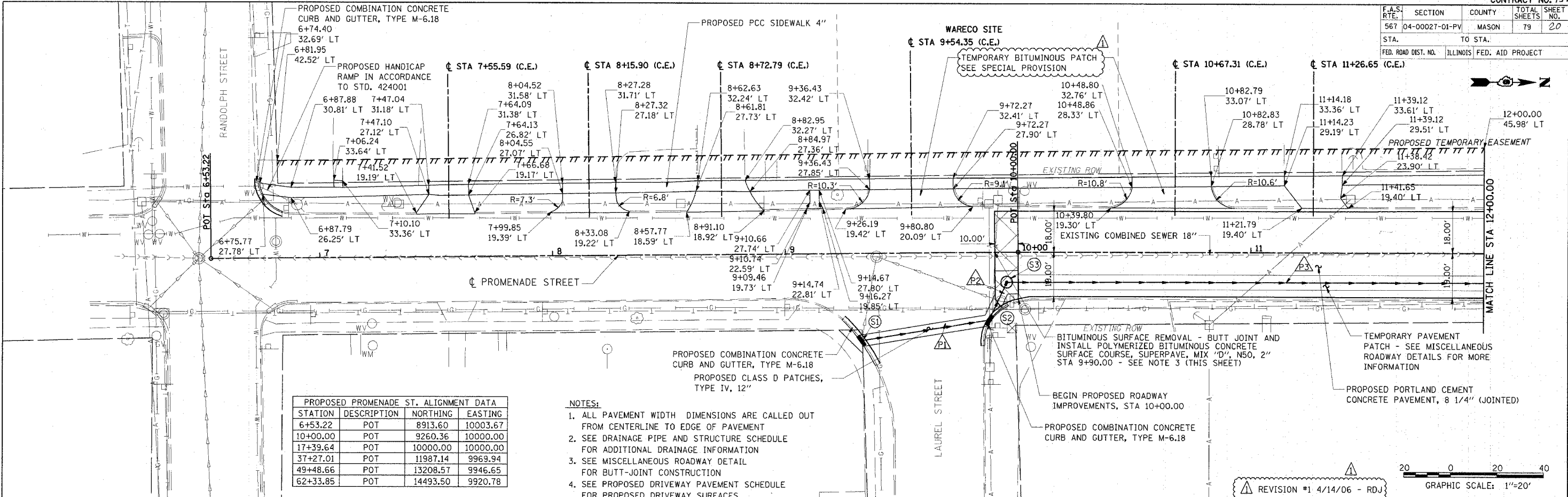
ILLINOIS DEPARTMENT OF TRANSPORTATION  
 PROMENADE STREET (C.H. 20)  
 SUMMARY OF QUANTITIES

SCALE: VERT.  
 HORIZ.  
 DATE 11/10/18

DRAWN BY RDJ  
 CHECKED BY RXC

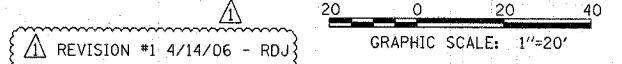
01/13/23 PM 04:13:28 PM  
 J:\NBA\JOBS\04528140\ADM\13128\13-CALCULATIONS\BOM\500-SHEETS.DGN  
 LAYOUT J.W. 9/16/05  
 DRAWN RDJ 11/10/18  
 REVIEWED RXC 2/3/06

F.A.S. SECTION	COUNTY	TOTAL SHEETS	SHEET NO.
567 04-00027-01-PV	MASON	79	20
STA.	TO STA.		
FED. ROAD DIST. NO.	ILLINOIS FED. AID PROJECT		



STATION	DESCRIPTION	NORTHING	EASTING
6+53.22	POT	8913.60	10003.67
10+00.00	POT	9260.36	10000.00
17+39.64	POT	10000.00	10000.00
37+27.01	POT	11987.14	9969.94
49+48.66	POT	13208.57	9946.65
62+33.85	POT	14493.50	9920.78

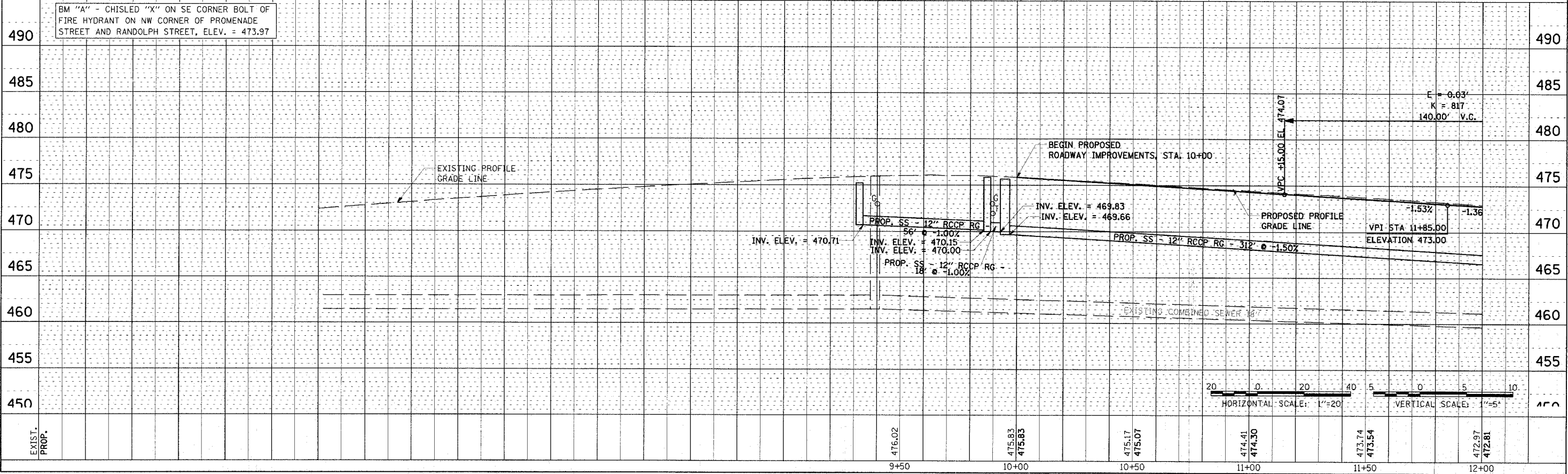
- NOTES:
1. ALL PAVEMENT WIDTH DIMENSIONS ARE CALLED OUT FROM CENTERLINE TO EDGE OF PAVEMENT
  2. SEE DRAINAGE PIPE AND STRUCTURE SCHEDULE FOR ADDITIONAL DRAINAGE INFORMATION
  3. SEE MISCELLANEOUS ROADWAY DETAIL FOR BUTT-JOINT CONSTRUCTION
  4. SEE PROPOSED DRIVEWAY PAVEMENT SCHEDULE FOR PROPOSED DRIVEWAY SURFACES



DATE	BY
DATE	BY
DATE	BY
DATE	BY
DATE	BY

DATE	BY
DATE	BY
DATE	BY
DATE	BY
DATE	BY

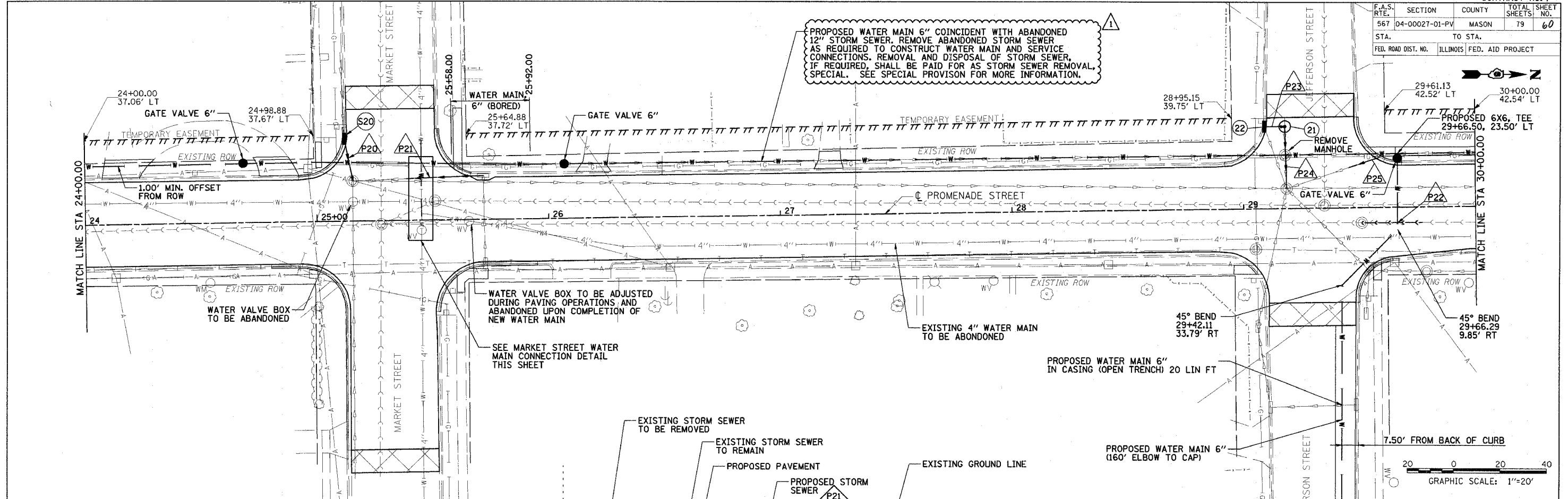
BM "A" - CHISLED "X" ON SE CORNER BOLT OF FIRE HYDRANT ON NW CORNER OF PROMENADE STREET AND RANDOLPH STREET, ELEV. = 473.97



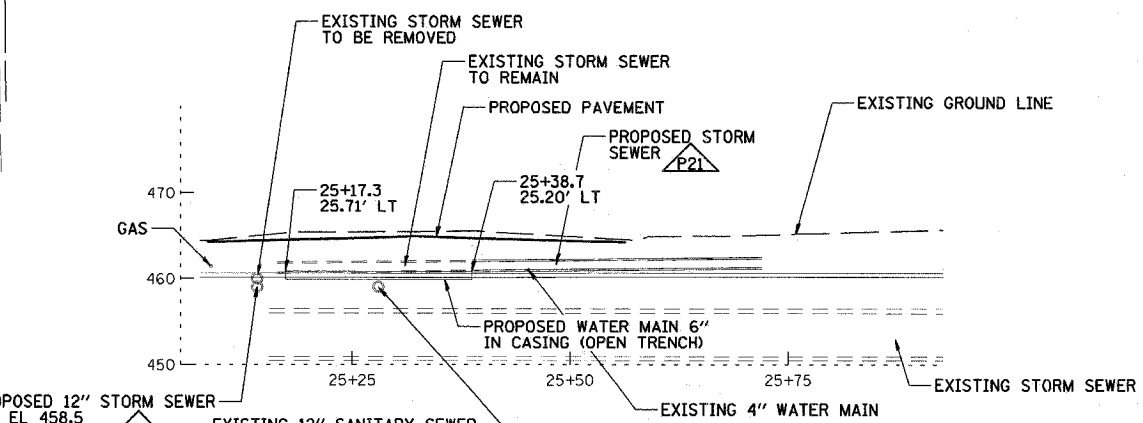
DATE	BY
DATE	BY
DATE	BY
DATE	BY
DATE	BY



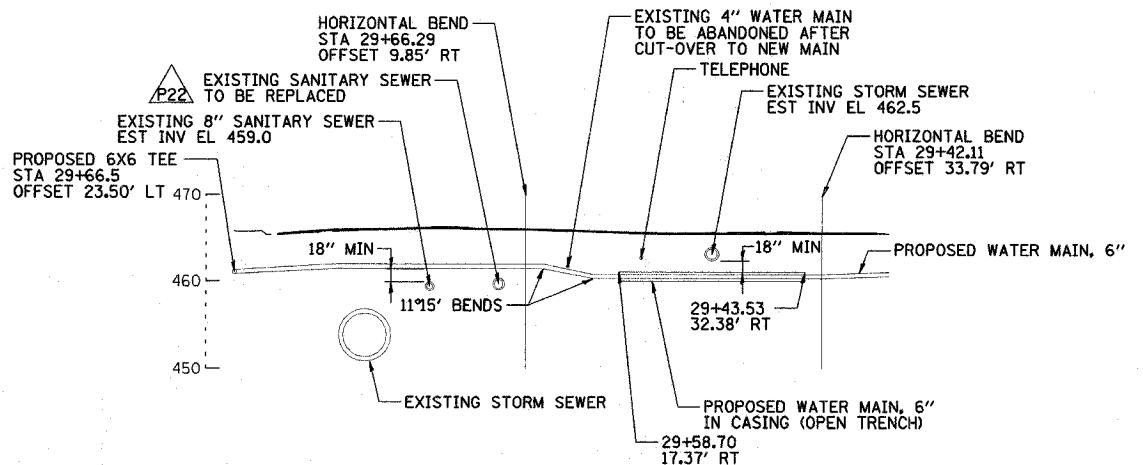
F.A.S. RTE.	SECTION	COUNTY	TOTAL SHEETS	SHEET NO.
567	04-00027-01-PV	MASON	79	60
STA. TO STA.		FED. ROAD DIST. NO. ILLINOIS FED. AID PROJECT		



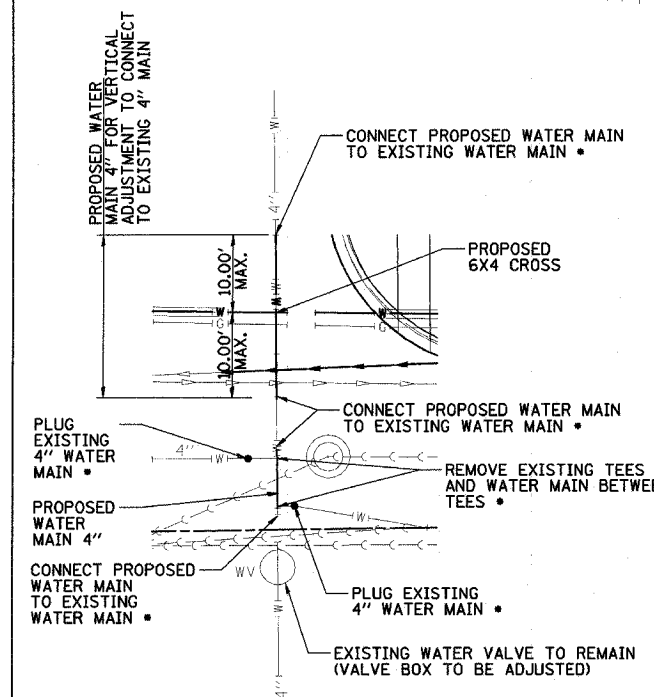
PROPOSED WATER MAIN 6" COINCIDENT WITH ABANDONED 12" STORM SEWER. REMOVE ABANDONED STORM SEWER AS REQUIRED TO CONSTRUCT WATER MAIN AND SERVICE CONNECTIONS. REMOVAL AND DISPOSAL OF STORM SEWER, IF REQUIRED, SHALL BE PAID FOR AS STORM SEWER REMOVAL SPECIAL. SEE SPECIAL PROVISION FOR MORE INFORMATION.



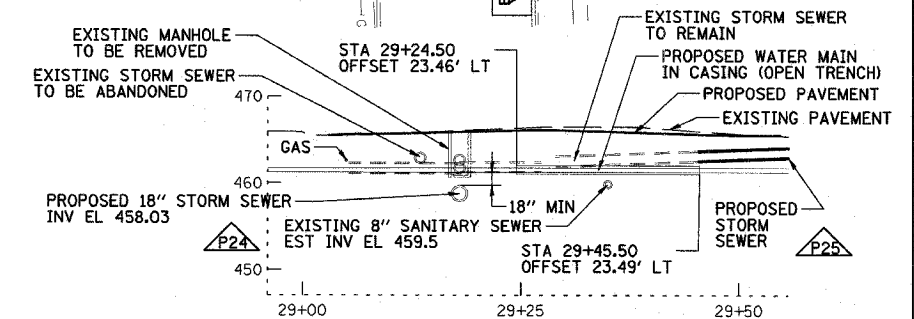
WATER MAIN PROFILE AT MARKET STREET  
SCALE: 1" = 10'



PROFILE ALONG JEFFERSON STREET WATER MAIN ACROSS PROMENADE STREET  
SCALE: 1" = 10'



MARKET STREET WATER MAIN CONNECTION DETAIL  
• INCLUDED IN CONNECTION TO EXISTING WATER MAINS "D" (NON PRESSURE)  
SCALE: 1" = 10'



WATER MAIN PROFILE AT JEFFERSON STREET  
SCALE: 1" = 10'

REVISIONS	
NAME	DATE
RDJ	4/14/06

ILLINOIS DEPARTMENT OF TRANSPORTATION  
PROMENADE STREET (C.H. 20)  
WATER LINES AND UTILITIES  
SCALE: VERT. 1" = 10'  
HORIZ. 1" = 20'  
DATE 02/01/06  
DRAWN BY TCJ  
CHECKED BY JAD

01:22:23 PM  
 04/13/06 08:51:05  
 T:\V\055\045291\05\CADD\ROAD SHEET\C-784-PR-R.DGN  
 LAYOUT KET 8/04/05  
 DRAWN EJM 2/01/06  
 REVIEWED JAD 2/02/06

