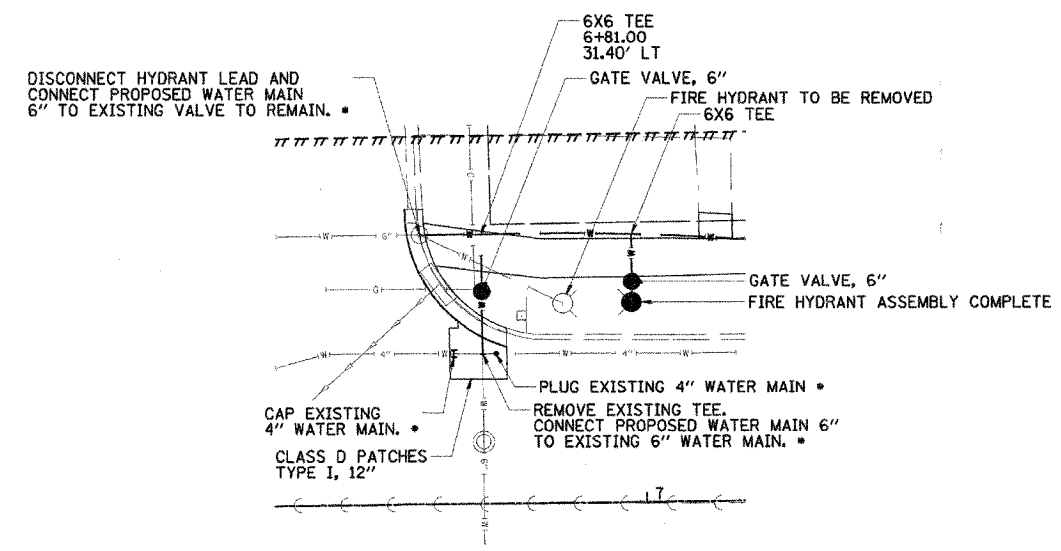
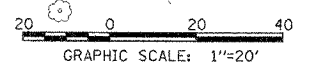
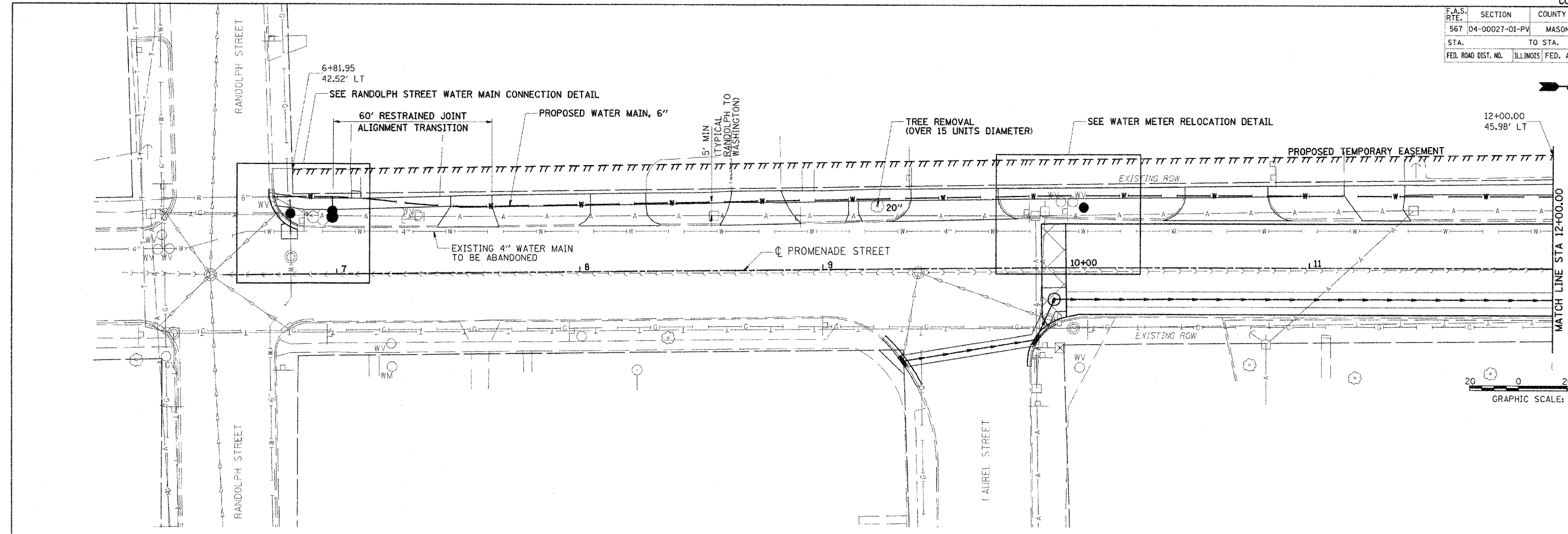
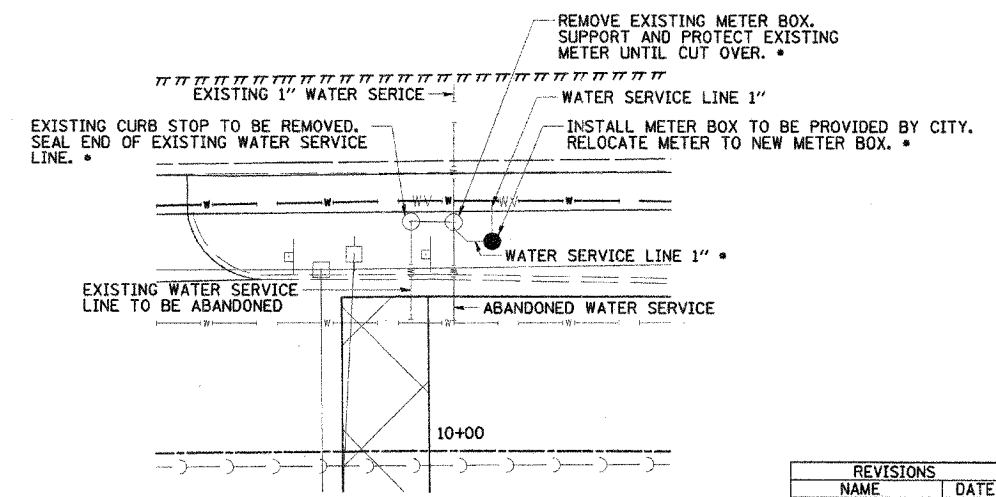


F.A.S. RTE.	SECTION	COUNTY	TOTAL SHEETS	SHEET NO.
567	04-00027-01-PV	MASON	79	57
STA.		TO STA.		
FED. ROAD DIST. NO.		ILLINOIS FED. AID PROJECT		



RANDOLPH STREET WATER MAIN CONNECTION DETAIL

• INCLUDED IN CONNECTIONS TO EXISTING WATER MAINS "A" (NON PRESSURE)
SCALE: 1" = 10'



WATER METER RELOCATION DETAIL

• INCLUDED IN DOMESTIC WATER METER TO BE RELOCATED
SCALE: 1" = 10'

REVISIONS	
NAME	DATE

ILLINOIS DEPARTMENT OF TRANSPORTATION
PROMENADE STREET (C.H. 20)
WATER LINES AND UTILITIES
SCALE: VERT. 1" = 10'
HORIZ. 1" = 20'
DATE: 11/18/05
DRAWN BY: TCJ
CHECKED BY: JAD

3/1/05 4:44 PM
 02/18/11 2:28:05 PM
 #FILE#
 LAYOUT: TCJ 1/26/06
 REVIEWED: RCC 2/03/06