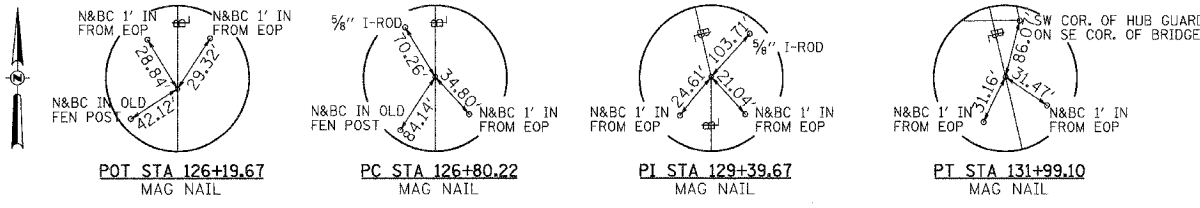


ROUTE NO.	SECTION	COUNTY	TOTAL SHEETS	SHEET NO.
CH 3	*	PIKE	17	6
FED. ROAD DIST. NO. 7		ILLINOIS	PROJECT BRS-601(171)	

*04-00079-00-BR

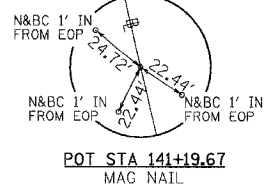


T 5 S, R 4 W, 4th PM
SECTION 2

BARBARA GROTE

PROPOSED STRUCTURE SN 075-3307
STATION 133+69.88
SEE SH.#7 THRU 17 FOR DETAILS
SEE SH.#7 FOR HYDRAULICS

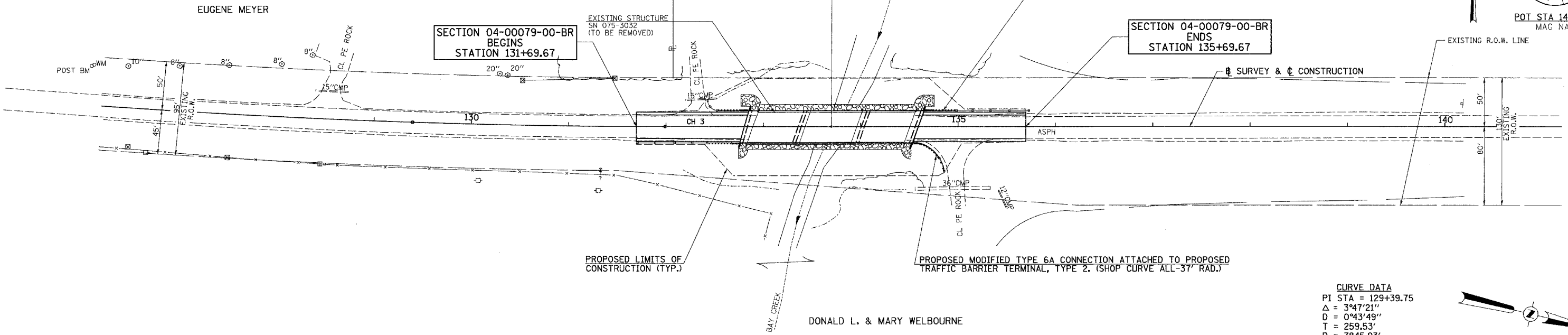
PROPOSED TYPE 6A CONNECTION
(TYPICAL EXCEPT NORTHEAST CORNER) ATTACHED TO EXISTING STEEL PLATE BEAM GUARDRAIL. REMOVE AND RE-ERECT EXISTING GUARDRAIL AS REQUIRED.



POT STA 141+19.67
MAG NAIL

SECTION 04-00079-00-BR
BEGINS
STATION 131+69.67

SECTION 04-00079-00-BR
ENDS
STATION 135+69.67



CURVE DATA
PI STA = 129+39.75
 $\Delta = 3^{\circ}47'21''$
D = 0'43'49"
T = 259.53'
R = 7845.93'
L = 518.88'
E = 4.29'
PC STA = 126+80.22
PT STA = 131+99.10
SE: NONE

DONALD L. & MARY WELBOURNE

T 5 S, R 4 W, 4th PM
SECTION 1

LEGEND
PROPOSED RIPRAP PLACEMENT

