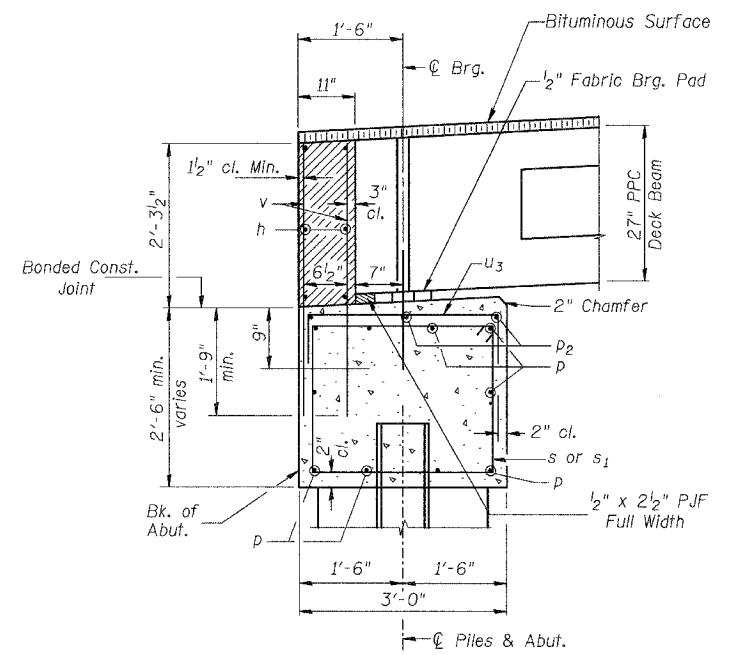
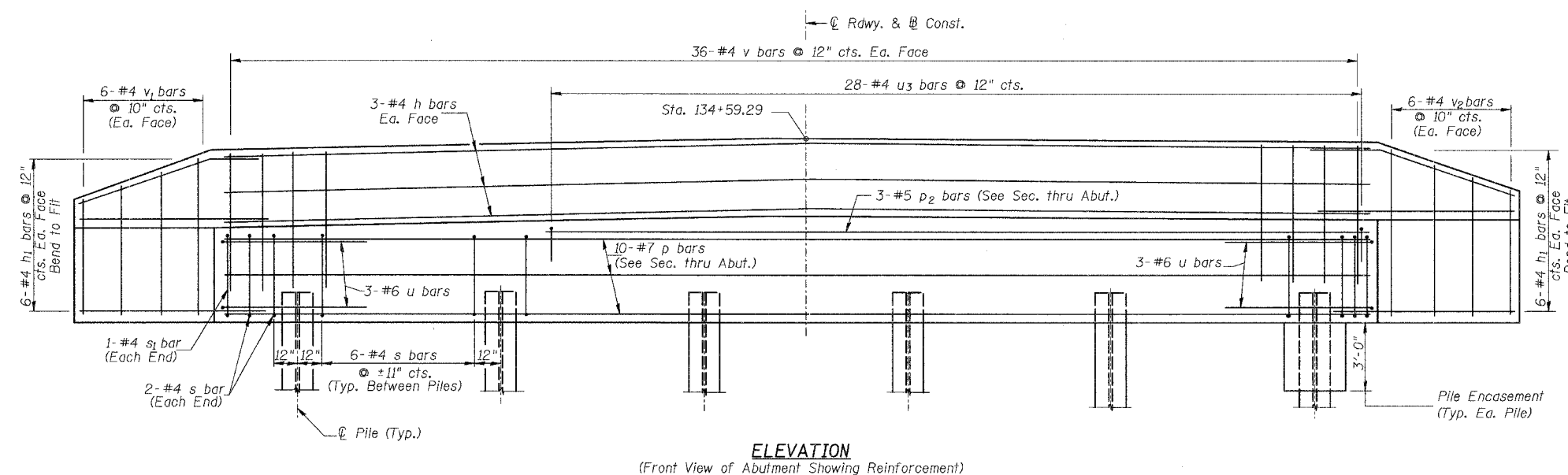
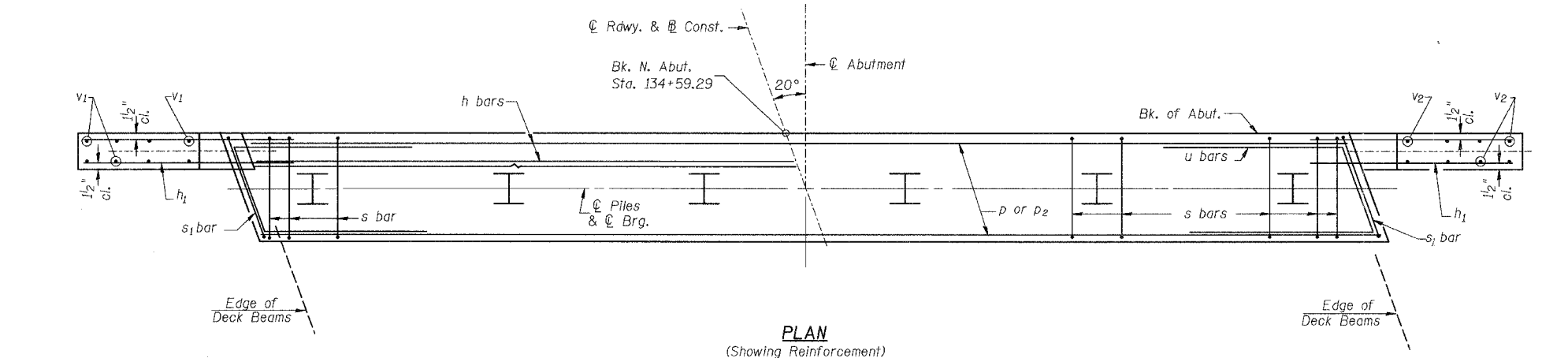


ROUTE NO.	SECTION	COUNTY	SHEET NO.	SHEET NO.
CH 3	*	PIKE	17	15
FED. ROAD DIST. NO. 7		ILLINOIS	PROJECT BRS-601(171)	
*04-00079-00-BR				

SHEET NO. 9  
11 SHEETS



SECTION THRU ABUT.  
(At Right Angles)

**BILL OF MATERIAL**

BAR	NO.	SIZE	LENGTH	SHAPE
h	6	#4	35'-11"	—
h <sub>1</sub>	24	#4	6'-6"	—
p	10	#7	35'-11"	—
p <sub>2</sub>	3	#5	27'-0"	—
s	34	#4	10'-5"	□
s <sub>1</sub>	2	#4	10'-9"	□
u	6	#6	11'-9"	—
u <sub>3</sub>	28	#4	6'-4"	—
v	72	#4	4'-0"	—
v <sub>1</sub>	6	#4	7'-11"	—
v <sub>2</sub>	6	#4	8'-11"	—
Concrete Structures				CU YD 16.1
Reinforcement Bars				POUND 1,800
Structure Excavation				CU YD 50
Furnishing Steel Piles HP12x53				FOOT 235
Driving Steel Piles				FOOT 235
Test Pile Steel HP12x53				EACH 1
Concrete Encasement				CU YD 2.1

① See Special Provisions

**NOTES**

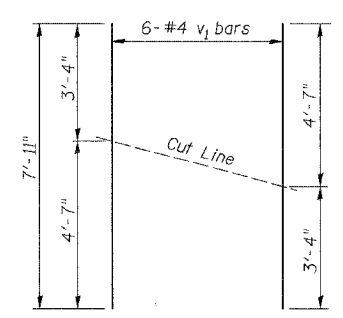
- The Backwall and the portion of the Wingwalls above the bonded construction joint shall be cast against the in-place beam.
- Reinforcement bars shall conform to A.A.S.H.T.O. M-31 or M-322, Grade 60.

**DESIGN STRESSES**

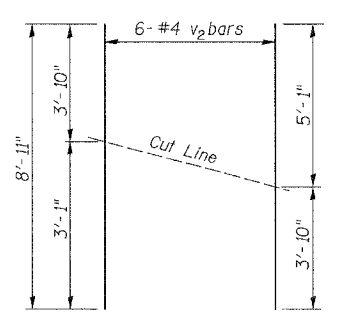
f'<sub>c</sub> = 3,500 p.s.i.  
f<sub>y</sub> = 60,000 p.s.i.

**PILE DATA**

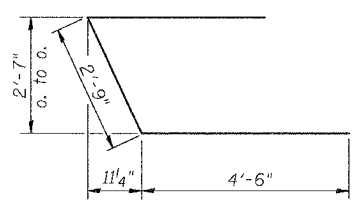
Type: Steel HP12x53  
Capacity: 40 Ton Driven to 60 Ton Bearing  
Est. Length: 47'  
No. Req'd.: 6 (Includes 1 Test Pile)



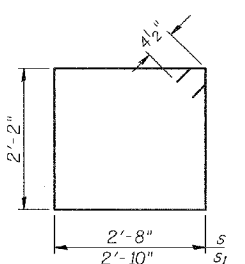
**BAR CUTTING DIAGRAM**  
Order v<sub>1</sub> bars full length. Cut as shown and use remainder of bars in opposite face.



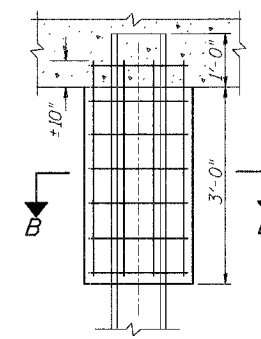
**BAR CUTTING DIAGRAM**  
Order v<sub>2</sub> bars full length. Cut as shown and use remainder of bars in opposite face.



**BAR u**



**BAR s & s<sub>1</sub>**



**DETAIL OF HP PILE ENCASEMENT**

Welded wire fabric 6x6-W4.0xW4.0 weighing 58#/100 sq. ft. The cost of Excavation and Reinforcement is included with the cost of Concrete Encasement. Forms for encasement may be omitted when soil conditions will permit.

**SEC. B-B**

**NORTH ABUTMENT DETAILS**  
**C.H. 3 OVER BAY CREEK**  
**SEC. 04-00079-00-BR**  
**PIKE COUNTY**  
**STATION 133+69.88**