

F.A.B. RTE.	SECTION	COUNTY	TOTAL SHEETS	SHEET NO.
322	1B2 & 1B7, RS 2B2	MARION	222	17
STA.	TO STA.			
IDOT DIST. NO. 7	ILLINOIS FED. AID PROJECT			
CONTRACT NO. 184700				

EXIST. CURVE C26
 PI STA. = 1356+57.19
 $\Delta = 63^\circ 08' 48''$ (LT)
 $D = 5^\circ 00' 00''$
 $R = 1,145.92'$
 $T = 704.24'$
 $L = 1,262.94'$
 $E = 199.10'$
 $\theta = \dots$
 T.R. = \dots
 S.E. RUN = \dots
 P.C. STA. = 1349+52.95
 P.T. STA. = 1362+15.89

EXIST. CURVE C25
 PI STA. = 1336+83.21
 $\Delta = 0^\circ 17' 02''$ (LT)
 $D = 0^\circ 34' 23''$
 $R = 10,000.00'$
 $T = 24.78'$
 $L = 49.56'$
 $E = 0.03'$
 $\theta = \dots$
 T.R. = \dots
 S.E. RUN = \dots
 P.C. STA. = 1336+58.43
 P.T. STA. = 1337+07.99

PROP. CURVE PROP4
 PI STA. = 2329+80.20
 $\Delta = 0^\circ 56' 17''$ (LT)
 $D = 1^\circ 52' 34''$
 $R = 3,053.87'$
 $T = 25.00'$
 $L = 50.00'$
 $E = 0.10'$
 $\theta = \dots$
 T.R. = \dots
 S.E. RUN = \dots
 P.C. STA. = 2329+55.20
 P.T. STA. = 2330+05.20

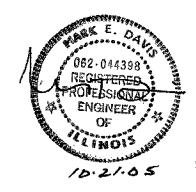
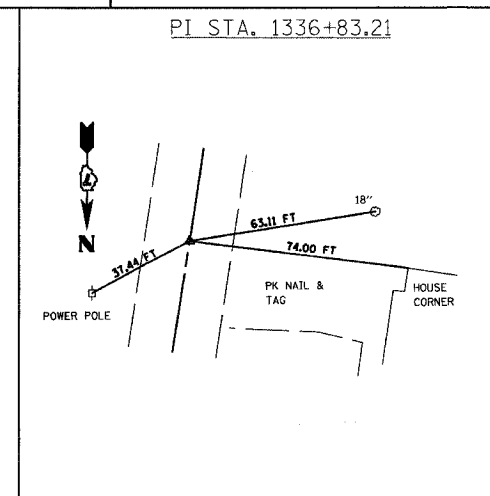
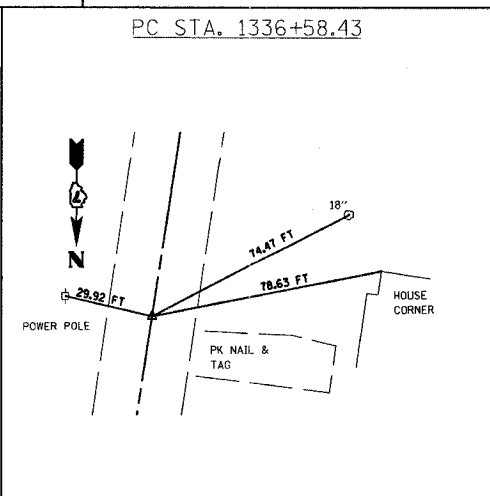
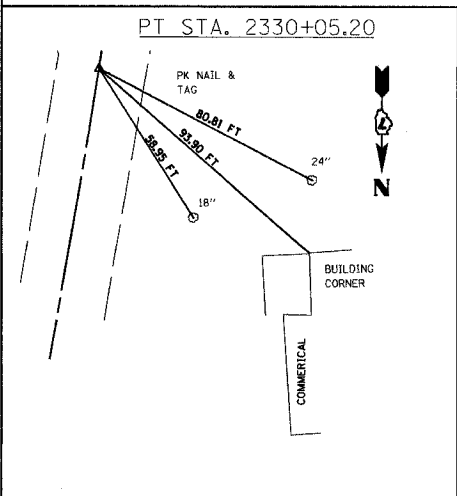
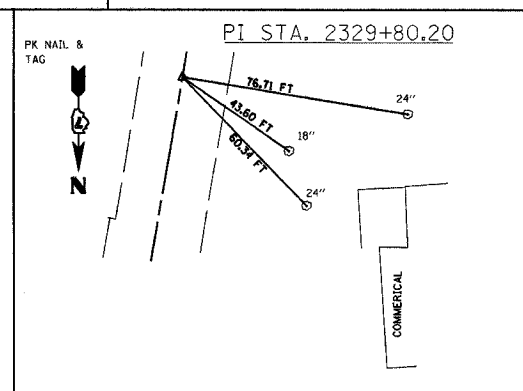
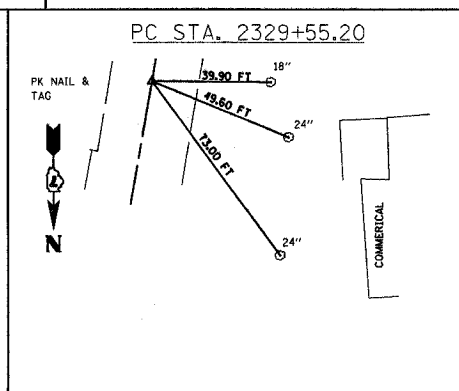
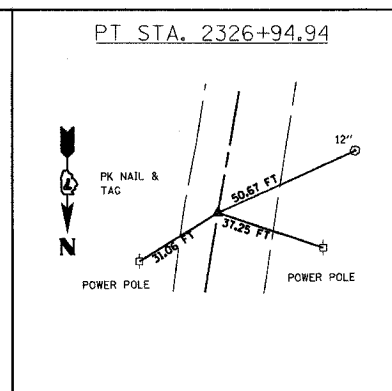
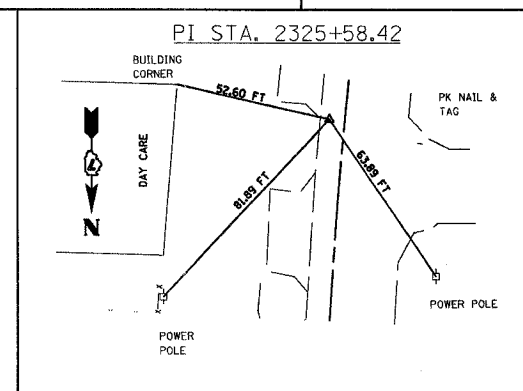
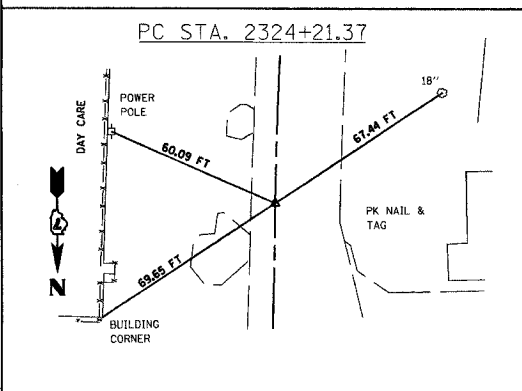
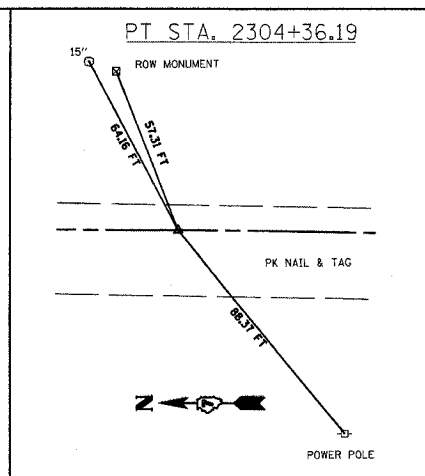
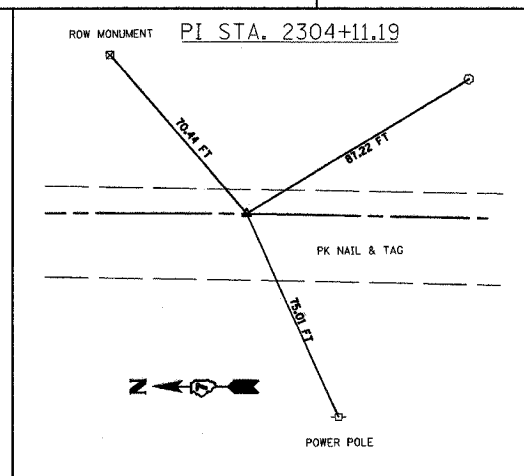
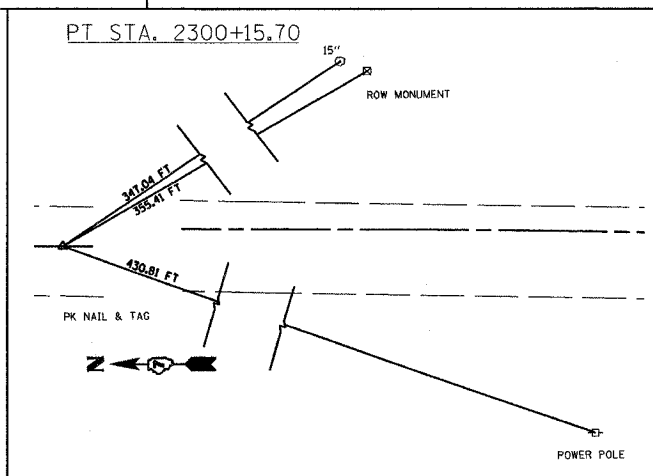
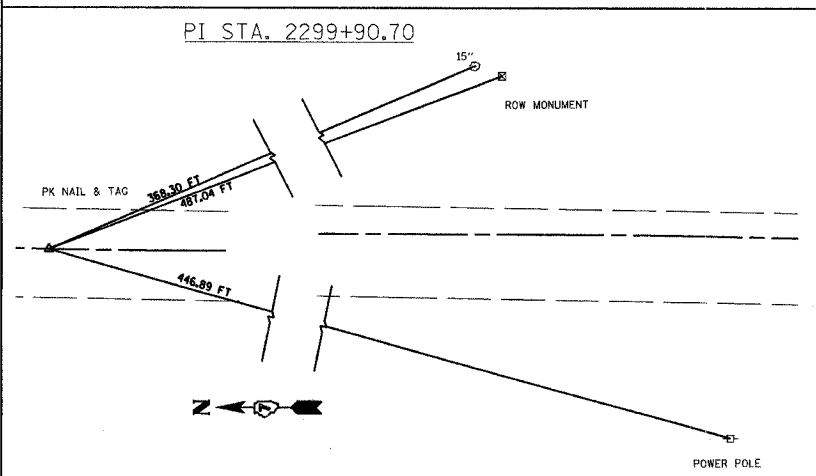
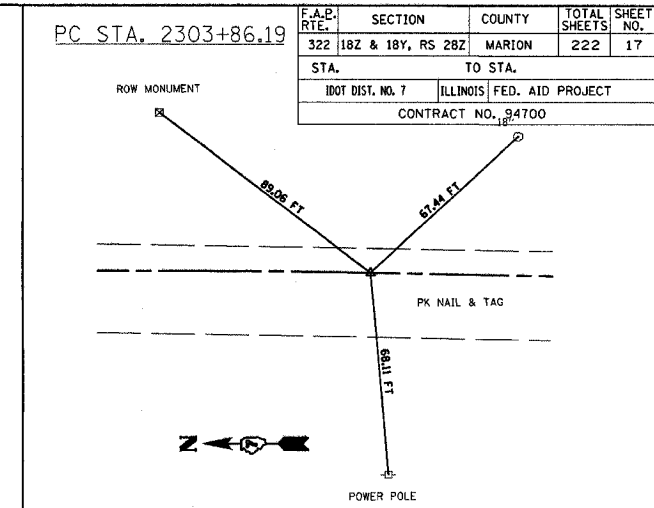
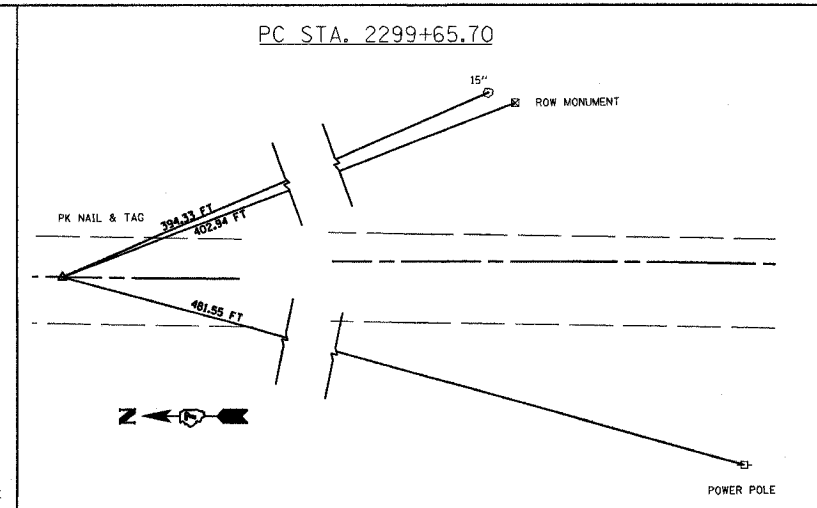
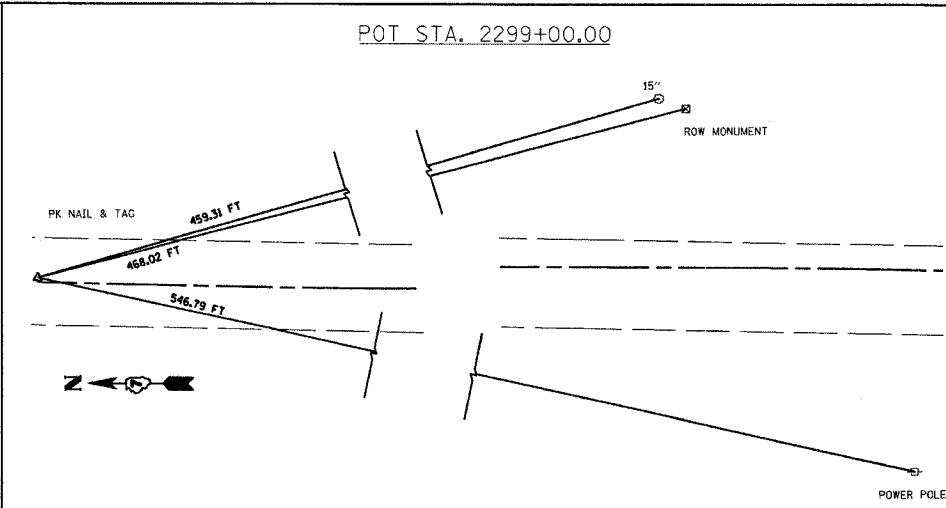
EQUATION:
 Sta 2330+05.20 BK =
 Sta 1330+04.20 AH

PROP. CURVE PROP3
 PI STA. = 2325+58.42
 $\Delta = 8^\circ 42' 29''$ (RT)
 $D = 3^\circ 10' 59''$
 $R = 1,800.00'$
 $T = 137.05'$
 $L = 273.57'$
 $E = 5.21'$
 $\theta = \dots$
 T.R. = \dots
 S.E. RUN = \dots
 P.C. STA. = 2324+21.37
 P.T. STA. = 2326+94.94

PROP. CURVE PROP1
 PI STA. = 2299+90.70
 $\Delta = 0^\circ 57' 14''$ (LT)
 $D = 1^\circ 54' 28''$
 $R = 3,003.39'$
 $T = 25.00'$
 $L = 50.00'$
 $E = 0.10'$
 $\theta = \dots$
 T.R. = \dots
 S.E. RUN = \dots
 P.C. STA. = 2299+65.70
 P.T. STA. = 2300+15.70

PROP. CURVE PROP2
 PI STA. = 2304+11.19
 $\Delta = 0^\circ 57' 14''$ (RT)
 $D = 1^\circ 54' 28''$
 $R = 3,003.39'$
 $T = 25.00'$
 $L = 50.00'$
 $E = 0.10'$
 $\theta = \dots$
 T.R. = \dots
 S.E. RUN = \dots
 P.C. STA. = 2303+86.19
 P.T. STA. = 2304+36.19

EQUATION:
 Sta 2299+65.70 BK =
 Sta 2299+65.70 AH



REVISIONS	
NAME	DATE

ILLINOIS DEPARTMENT OF TRANSPORTATION
 HORIZONTAL ALIGNMENT TIES
 U.S. ROUTE 51
 SCALE: VERT. _____
 HORIZ. _____
 DATE 6/27/03
 DRAWN BY MEC
 CHECKED BY MJM