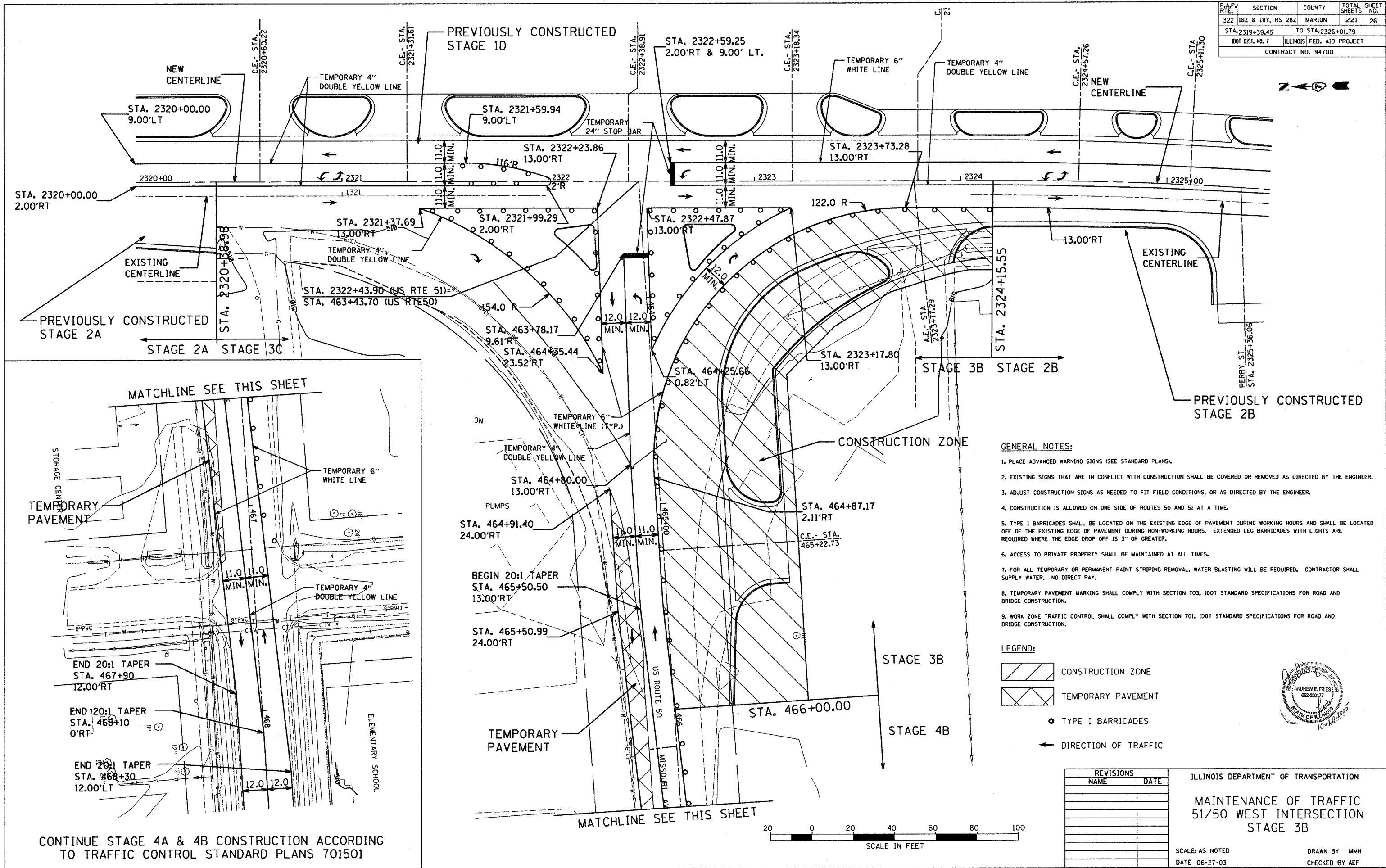
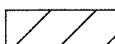


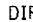


F.A.P. RTE.	SECTION	COUNTY	TOTAL SHEETS	SHEET NO.
322 1B2 & 1B4, RS 2B2		MARION	221	26
STA. 2319+39.45		TO STA. 2326+01.79		
IDOT DIST. NO. 7		ILLINOIS FED. AID PROJECT		
CONTRACT NO. 94700				



- GENERAL NOTES:**
1. PLACE ADVANCED WARNING SIGNS (SEE STANDARD PLANS).
 2. EXISTING SIGNS THAT ARE IN CONFLICT WITH CONSTRUCTION SHALL BE COVERED OR REMOVED AS DIRECTED BY THE ENGINEER.
 3. ADJUST CONSTRUCTION SIGNS AS NEEDED TO FIT FIELD CONDITIONS, OR AS DIRECTED BY THE ENGINEER.
 4. CONSTRUCTION IS ALLOWED ON ONE SIDE OF ROUTES 50 AND 51 AT A TIME.
 5. TYPE I BARRICADES SHALL BE LOCATED ON THE EXISTING EDGE OF PAVEMENT DURING WORKING HOURS AND SHALL BE LOCATED OFF OF THE EXISTING EDGE OF PAVEMENT DURING NON-WORKING HOURS. EXTENDED LEG BARRICADES WITH LIGHTS ARE REQUIRED WHERE THE EDGE DROP OFF IS 3" OR GREATER.
 6. ACCESS TO PRIVATE PROPERTY SHALL BE MAINTAINED AT ALL TIMES.
 7. FOR ALL TEMPORARY OR PERMANENT PAINT STRIPING REMOVAL, WATER BLASTING WILL BE REQUIRED. CONTRACTOR SHALL SUPPLY WATER. NO DIRECT PAY.
 8. TEMPORARY PAVEMENT MARKING SHALL COMPLY WITH SECTION 703, IDOT STANDARD SPECIFICATIONS FOR ROAD AND BRIDGE CONSTRUCTION.
 9. WORK ZONE TRAFFIC CONTROL SHALL COMPLY WITH SECTION 701, IDOT STANDARD SPECIFICATIONS FOR ROAD AND BRIDGE CONSTRUCTION.

- LEGEND:**
-  CONSTRUCTION ZONE
 -  TEMPORARY PAVEMENT
 -  TYPE I BARRICADES
 -  DIRECTION OF TRAFFIC

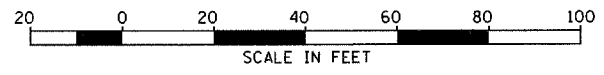


REVISIONS	
NAME	DATE

ILLINOIS DEPARTMENT OF TRANSPORTATION
**MAINTENANCE OF TRAFFIC
 51/50 WEST INTERSECTION
 STAGE 3B**

SCALE: AS NOTED
 DATE: 06-27-03

DRAWN BY: MMH
 CHECKED BY: AEF



CONTINUE STAGE 4A & 4B CONSTRUCTION ACCORDING TO TRAFFIC CONTROL STANDARD PLANS 701501