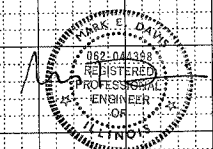
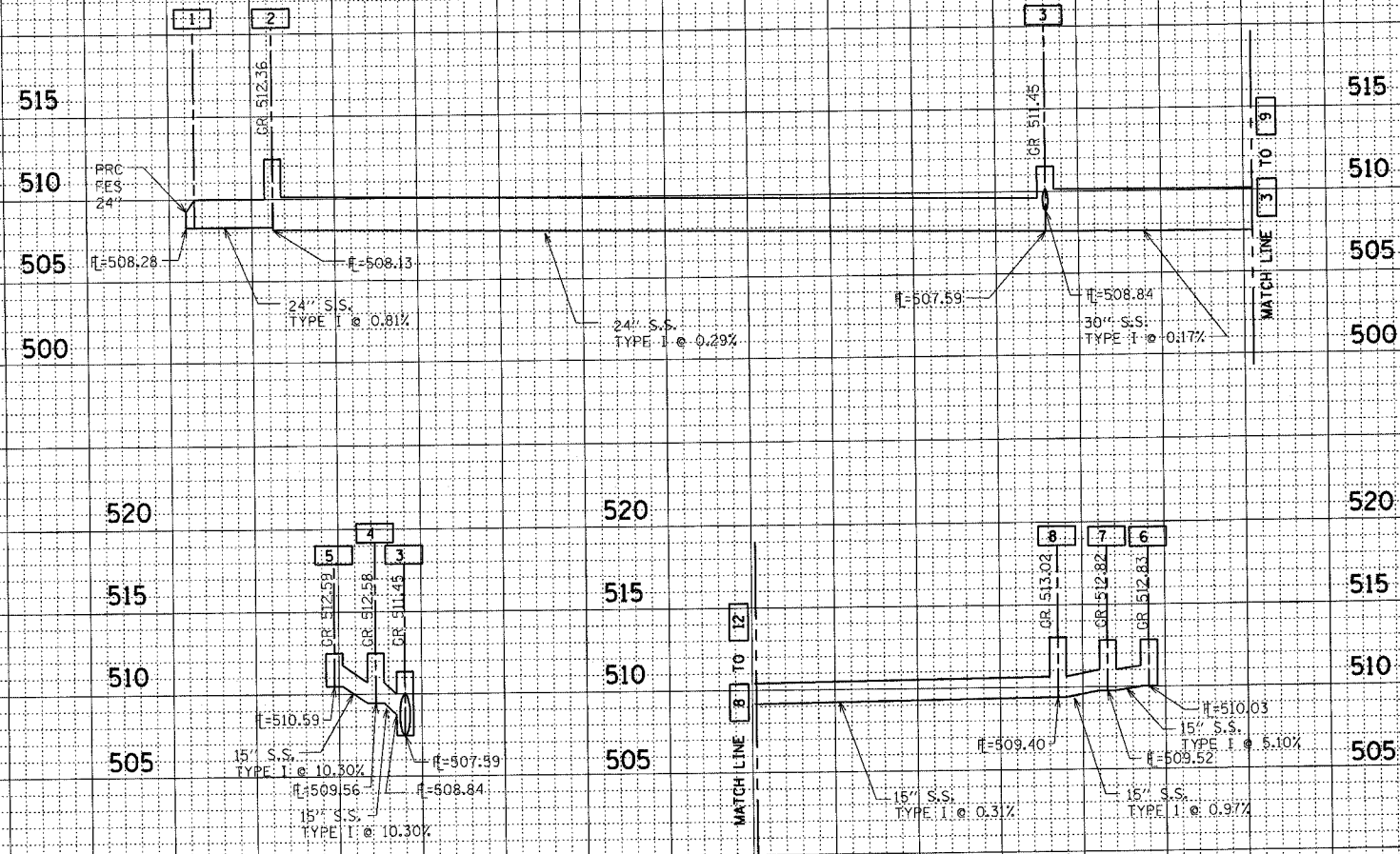


F.A.P. RTE.	SECTION	COUNTY	TOTAL SHEETS	SHEET NO.
	182 & 18Y, RS 282	MARION	222	30
STA.	TO STA.			
FED. ROAD DIST. NO. 1	ILLINOIS	FED. AID PROJECT		

DATE	BY
DATE	BY
DATE	BY

DATE	BY
DATE	BY
DATE	BY

DATE	BY
DATE	BY
DATE	BY



10-21-05

CONTRACT NO. 94700

1:20000 WWS/10/21/05 GPT 10/21/05 8 03 37 AM