

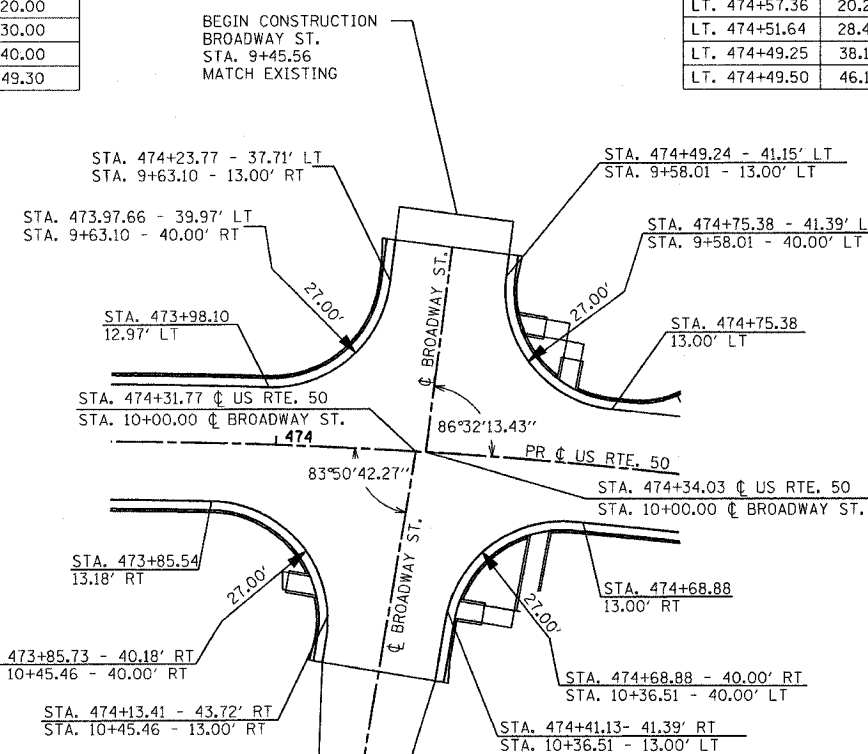
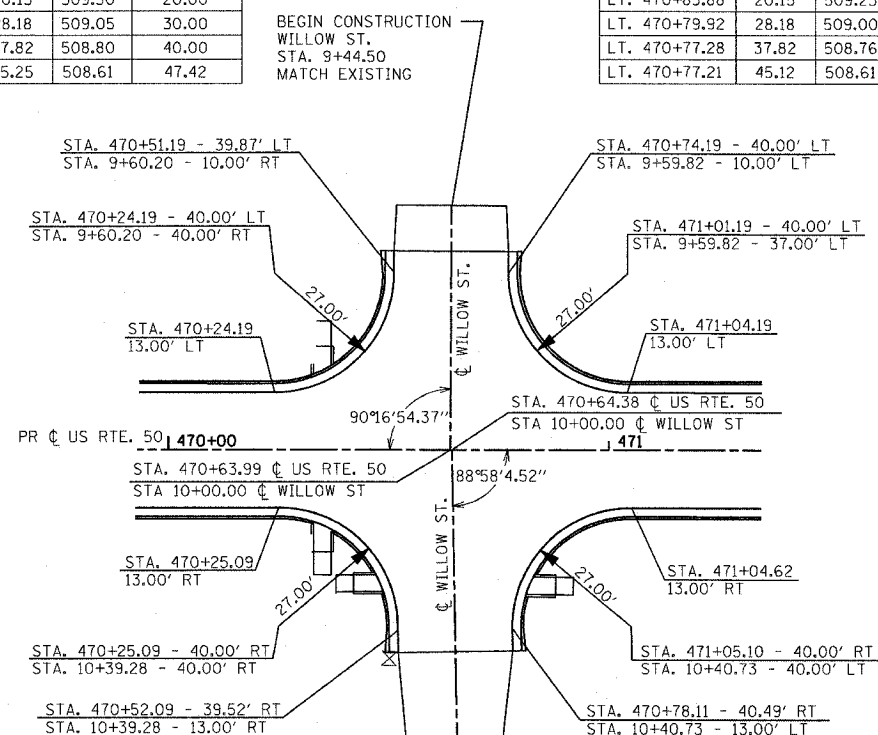
F.A.E. NO.	SECTION	COUNTY	TOTAL SHEETS	SHEET NO.
327	18Z & 18Y, RS 28Z	MARION	222	83
STA.		TO STA.		
DOT DIST. NO. 7		ILLINOIS FED. AID PROJECT		
CONTRACT NO. 94700				

S.E. QUADRANT			
STATIONING ALONG U.S. RTE. 50	OFFSET TO EOP FEET	EOP ELEV FEET	DISTANCE ALONG RAD. FEET
LT. 470+24.19	13.00	509.80	
LT. 470+34.02	14.85	509.55	10.00
LT. 470+42.49	20.15	509.30	20.00
LT. 470+48.46	28.18	509.05	30.00
LT. 470+51.10	37.82	508.80	40.00
LT. 470+51.21	45.25	508.61	47.42

S.W. QUADRANT			
STATIONING ALONG U.S. RTE. 50	OFFSET TO EOP FEET	EOP ELEV FEET	DISTANCE ALONG RAD. FEET
LT. 471+04.19	13.00	509.68	
LT. 470+94.36	14.85	509.45	10.00
LT. 470+85.88	20.15	509.23	20.00
LT. 470+79.92	28.18	509.00	30.00
LT. 470+77.28	37.82	508.76	40.00
LT. 470+77.21	45.12	508.61	47.30

S.E. QUADRANT			
STATIONING ALONG U.S. RTE. 50	OFFSET TO EOP FEET	EOP ELEV FEET	DISTANCE ALONG RAD. FEET
LT. 473+98.10	12.97	508.25	
LT. 474+07.78	15.02	508.08	10.00
LT. 474+15.99	20.55	507.91	20.00
LT. 474+21.58	28.77	507.74	30.00
LT. 474+23.82	38.50	507.57	40.00
LT. 474+24.48	47.78	507.41	49.30

S.W. QUADRANT			
STATIONING ALONG U.S. RTE. 50	OFFSET TO EOP FEET	EOP ELEV FEET	DISTANCE ALONG RAD. FEET
LT. 474+75.38	13.00	508.04	
LT. 474+65.67	14.89	507.91	10.00
LT. 474+57.36	20.28	507.78	20.00
LT. 474+51.64	28.40	507.65	30.00
LT. 474+49.25	38.10	507.52	40.00
LT. 474+49.50	46.15	507.41	48.05



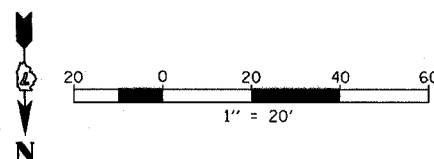
N.E. QUADRANT			
STATIONING ALONG U.S. RTE. 50	OFFSET TO EOP FEET	EOP ELEV FEET	DISTANCE ALONG RAD. FEET
RT. 470+25.09	13.00	509.80	
RT. 470+34.92	14.85	509.56	10.00
RT. 470+43.40	20.15	509.36	20.00
RT. 470+49.36	28.18	509.09	30.00
RT. 470+52.00	37.82	508.85	40.00
RT. 470+52.20	45.95	508.66	48.13

N.W. QUADRANT			
STATIONING ALONG U.S. RTE. 50	OFFSET TO EOP FEET	EOP ELEV FEET	DISTANCE ALONG RAD. FEET
RT. 471+04.62	13.00	509.68	
RT. 470+94.82	15.03	509.46	10.00
RT. 470+86.44	20.49	509.25	20.00
RT. 470+80.62	28.62	509.03	30.00
RT. 470+78.16	38.31	508.82	40.00
RT. 470+78.20	45.49	508.86	47.18

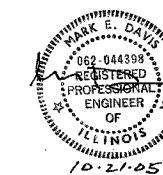
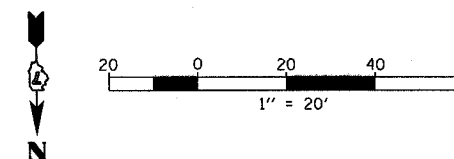
N.E. QUADRANT			
STATIONING ALONG U.S. RTE. 50	OFFSET TO EOP FEET	EOP ELEV FEET	DISTANCE ALONG RAD. FEET
RT. 473+85.54	13.18	508.31	
RT. 473+95.50	14.93	508.25	10.00
RT. 474+04.19	20.08	508.19	20.00
RT. 474+10.47	27.95	508.13	30.00
RT. 474+13.45	37.52	508.07	40.00
RT. 474+12.94	47.51	508.01	50.00
RT. 474+12.79	48.68	508.00	51.18

N.W. QUADRANT			
STATIONING ALONG U.S. RTE. 50	OFFSET TO EOP FEET	EOP ELEV FEET	DISTANCE ALONG RAD. FEET
RT. 474+68.88	13.00	508.05	
RT. 474+58.93	14.81	508.13	10.00
RT. 474+50.78	20.02	508.21	20.00
RT. 474+44.05	27.94	508.29	30.00
RT. 474+41.13	37.53	508.37	40.00
RT. 474+40.12	47.78	508.17	50.00
RT. 474+39.70	51.54	508.00	54.08

U.S. ROUTE 50 / WILLOW ST.



U.S. ROUTE 50 / BROADWAY ST.



REVISIONS	
NAME	DATE

ILLINOIS DEPARTMENT OF TRANSPORTATION
INTERSECTION WARPING / GEOMETRIC LAYOUT
U.S. ROUTE 50
 SCALE: VERT. 1" = 20'
 HORIZ. 1" = 20'
 DATE 6/27/03
 DRAWN BY MEC
 CHECKED BY MJM