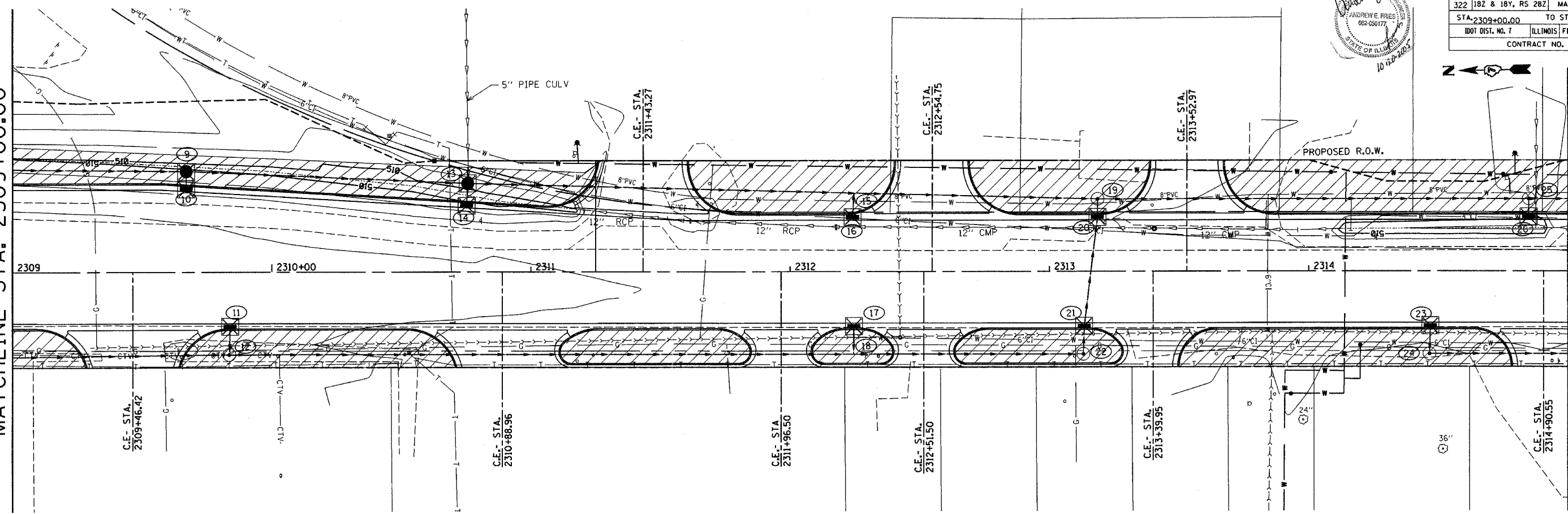


F.A.P. RTE.	SECTION	COUNTY	TOTAL SHEETS	SHEET NO.
322	18Z & 18Y, RS 28Z	MARION	221	115
STA. 2309+00.00		TO STA. 2321+00.00		
DOT DIST. NO. 7		ILLINOIS FED. AID PROJECT		
CONTRACT NO. 94700				

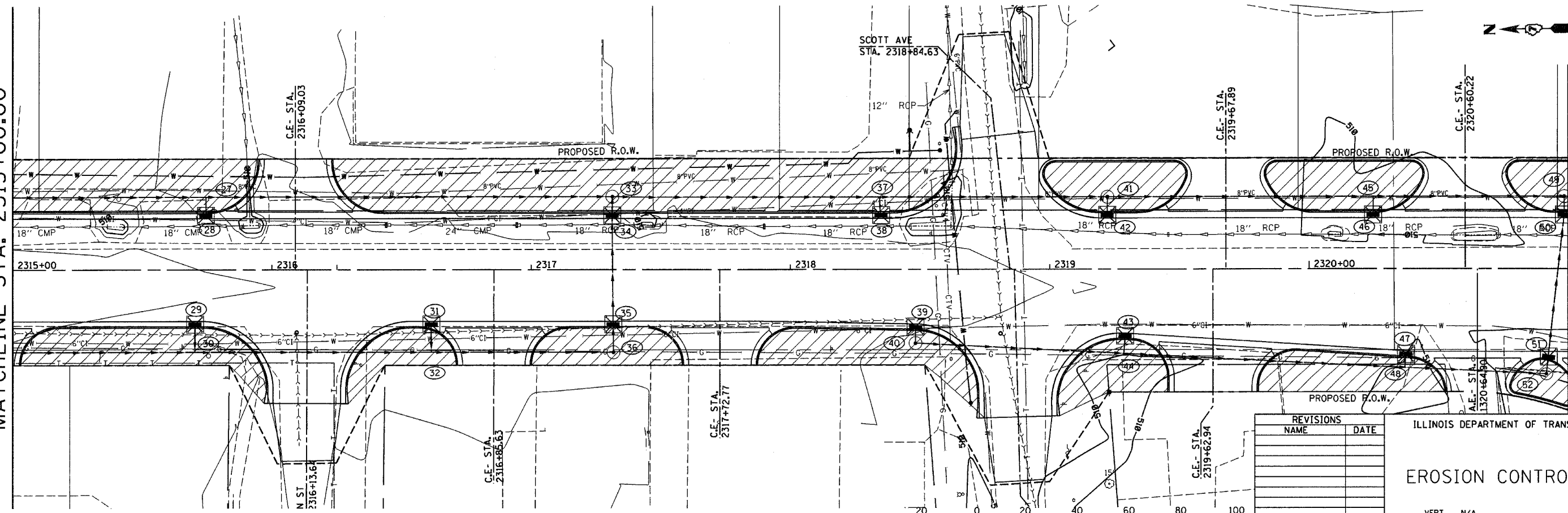
MATCHLINE STA. 2309+00.00

MATCHLINE STA. 2315+00.00



MATCHLINE STA. 2315+00.00

MATCHLINE STA. 2321+00.00



REVISIONS	
NAME	DATE

ILLINOIS DEPARTMENT OF TRANSPORTATION
EROSION CONTROL PLAN

SCALE: VERT. N/A
HORIZ. 1" = 20'
DATE 06-27-03
DRAWN BY ELA
CHECKED BY AEF

