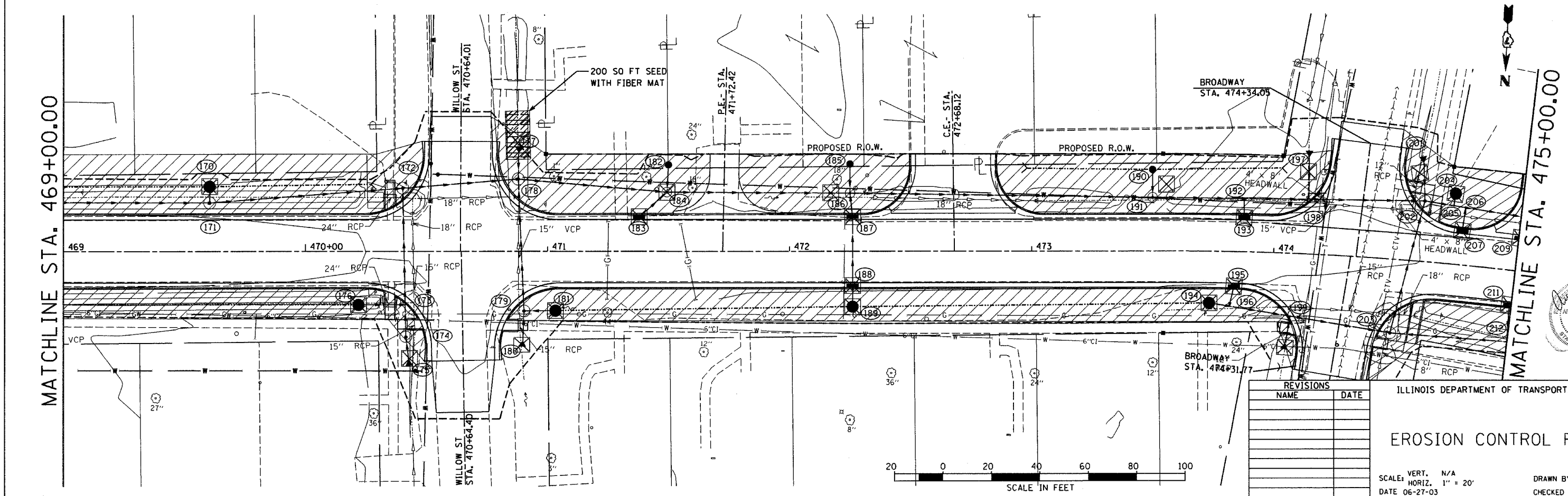
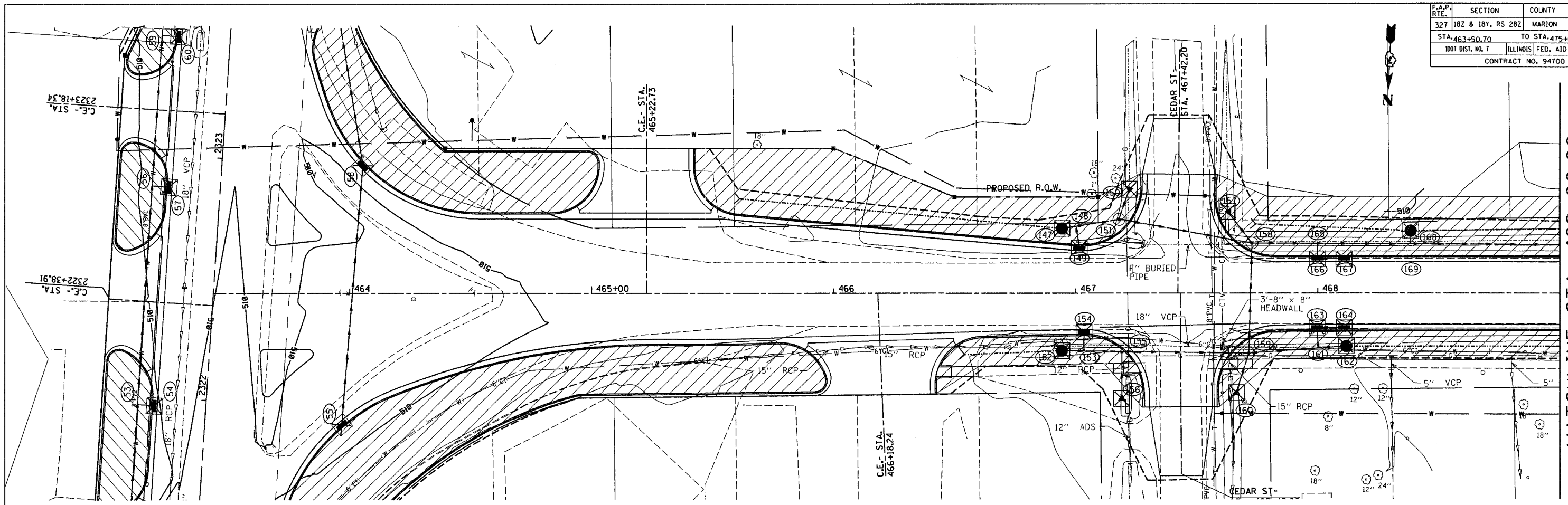
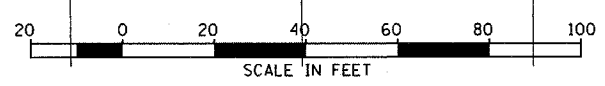


F.A.P. RTE.	SECTION	COUNTY	TOTAL SHEETS	SHEET NO.
327	18Z & 18Y, RS 28Z	MARION	221	119
STA. 463+50.70		TO STA. 475+00.00		
1001 DIST. NO. 7		ILLINOIS FED. AID PROJECT		
CONTRACT NO. 94700				



MATCHLINE STA. 469+00.00

MATCHLINE STA. 475+00.00



REVISIONS	
NAME	DATE

ILLINOIS DEPARTMENT OF TRANSPORTATION  
**EROSION CONTROL PLAN**  
 SCALE: VERT. N/A  
 HORIZ. 1" = 20'  
 DATE 06-27-03  
 DRAWN BY ELA  
 CHECKED BY AEF

