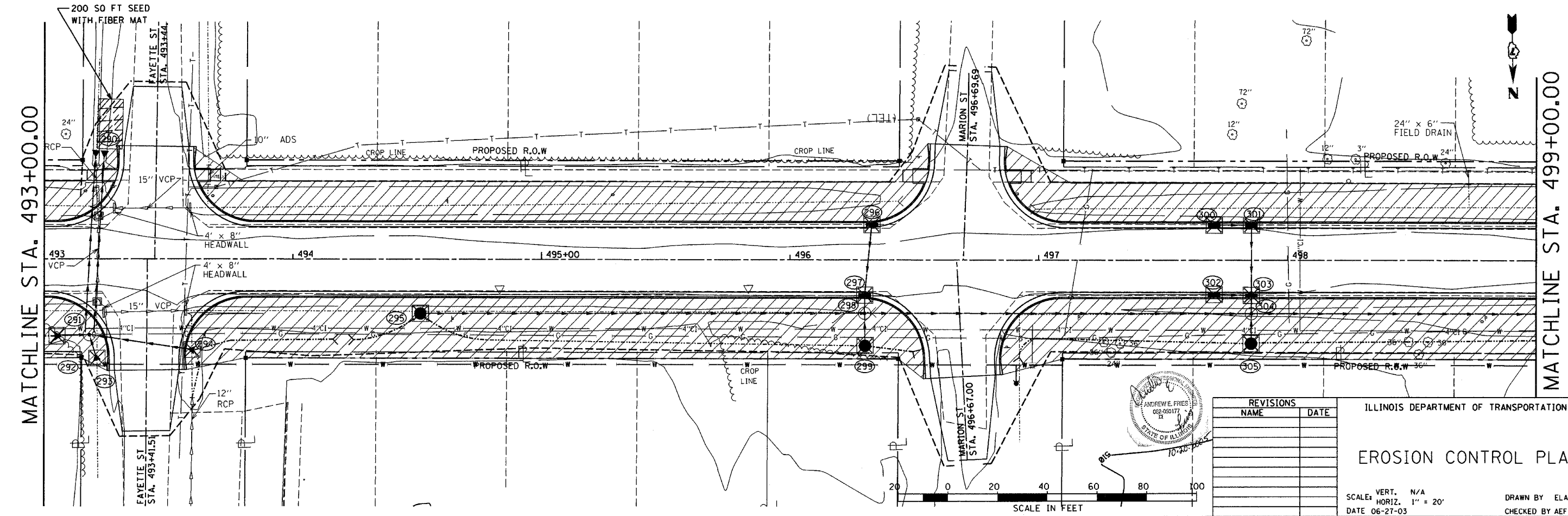
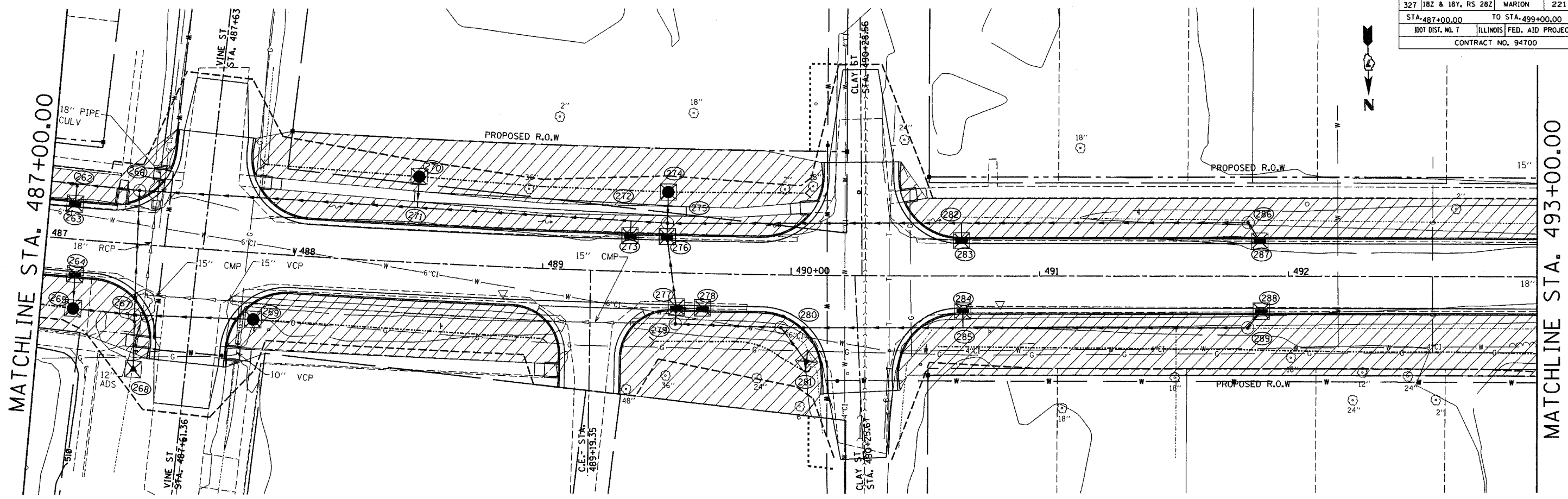


F.A.P. RTE.	SECTION	COUNTY	TOTAL SHEETS	SHEET NO.
327	1B2 & 1B3, RS 2B2	MARION	221	121
STA. 487+00.00		TO STA. 499+00.00		
DOT DIST. NO. 7		ILLINOIS FED. AID PROJECT		
CONTRACT NO. 94700				



REVISIONS	
NAME	DATE

ILLINOIS DEPARTMENT OF TRANSPORTATION
EROSION CONTROL PLAN
 SCALE: VERT. N/A
 HORIZ. 1" = 20'
 DATE 06-27-03
 DRAWN BY ELA
 CHECKED BY AEF

