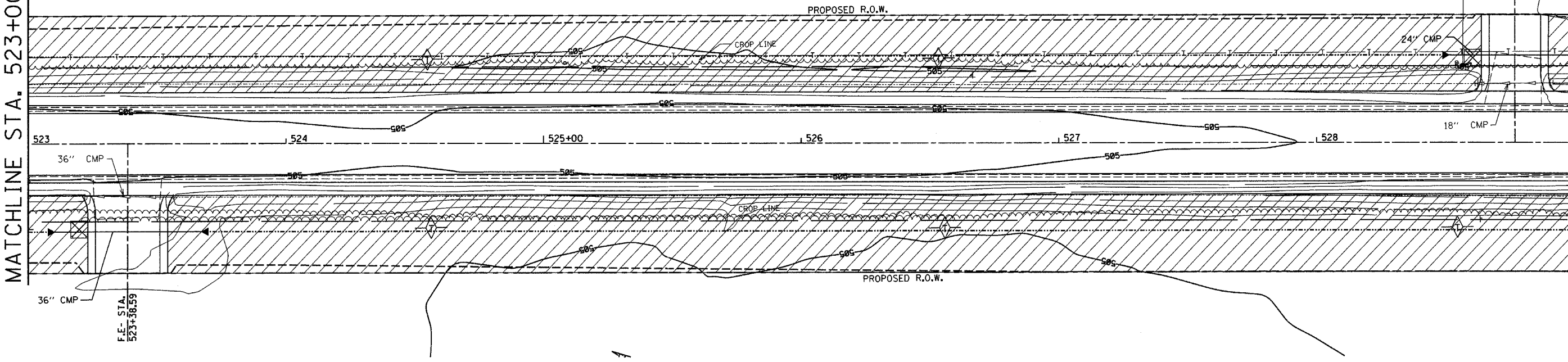


F.A.P. RTE.	SECTION	COUNTY	TOTAL SHEETS	SHEET NO.
327 18Z & 18Y, RS 28Z		MARION	221	124
STA. 523+00.00		TO STA. 535+00.00		
DOT DIST. NO. 7		ILLINOIS FED. AID PROJECT		
CONTRACT NO. 94700				



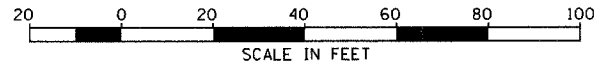
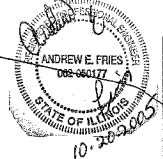
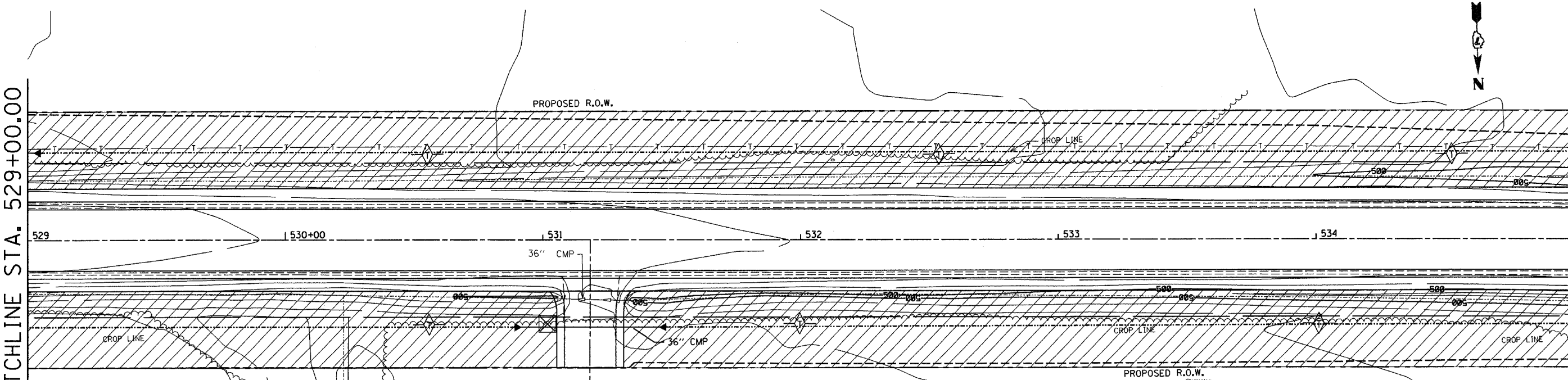
MATCHLINE STA. 523+00.00

MATCHLINE STA. 529+00.00



MATCHLINE STA. 529+00.00

MATCHLINE STA. 535+00.00



REVISIONS	
NAME	DATE

ILLINOIS DEPARTMENT OF TRANSPORTATION

EROSION CONTROL PLAN

SCALE: VERT. N/A
HORIZ. 1" = 20'

DATE 06-27-03

DRAWN BY ELA
CHECKED BY AEF