




F.A.P. RTE.	SECTION	COUNTY	TOTAL SHEETS	SHEET NO.
322	187 & 189, RS. & 287	MARION	222	127
STA. 2299+90.77		TO STA. 2309+00.00		
FED. ROAD DIST. NO. 7 ILLINOIS FED. AID PROJECT				
CONTRACT NO. 94700				

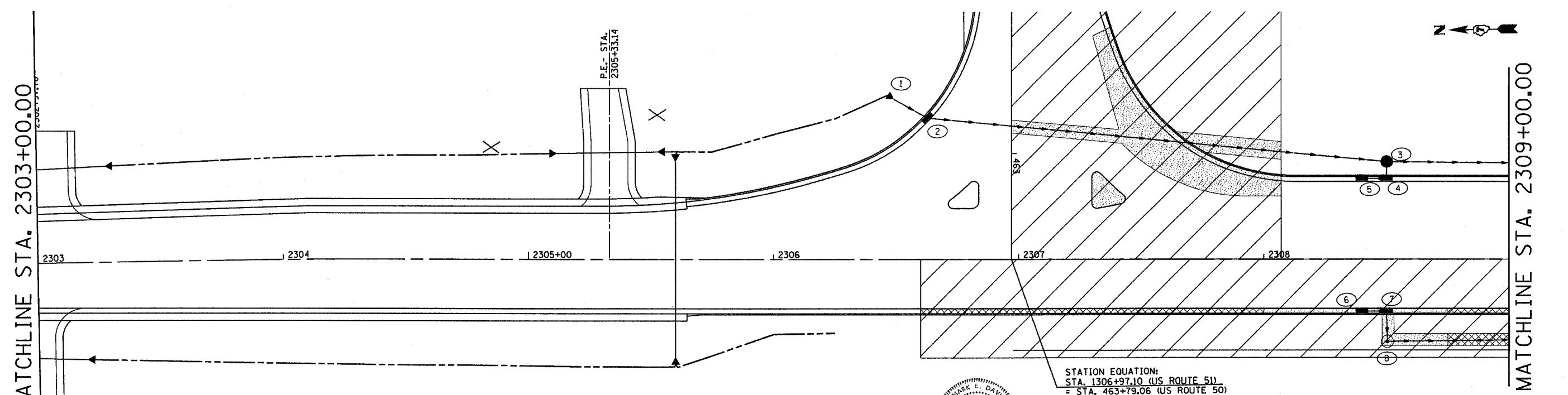
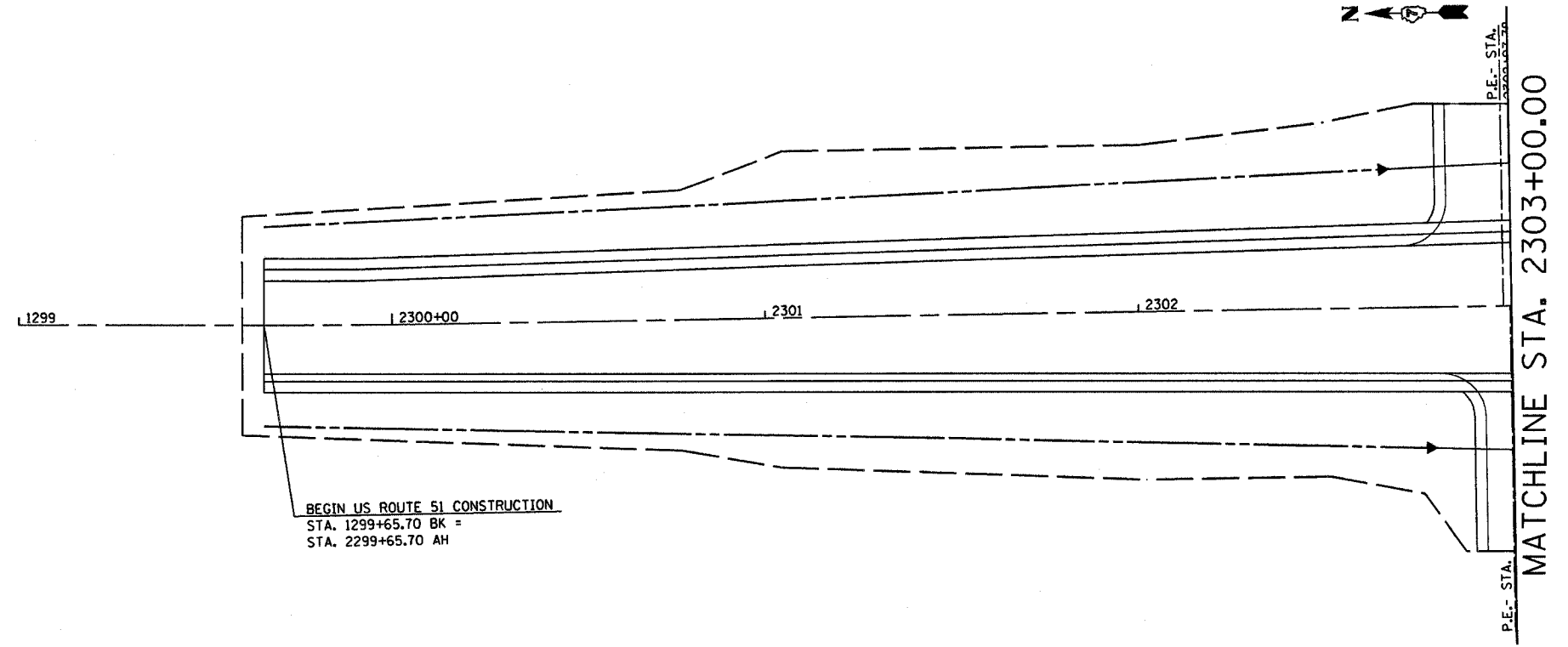
**CONTAMINATED SOILS LEGEND**

-  AREA OF POTENTIAL CONTAMINATED SOILS
-  EXCAVATION AREA ESTIMATED TO EXCEED TACO TIER I CRITERIA FOR BENZENE AND/OR SPLP/TCLP LEAD.
-  EXCAVATION AREA ESTIMATED TO EXCEED TACO TIER I CRITERIA FOR LEAD AND/OR SPLP/TCLP LEAD.

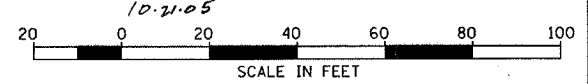
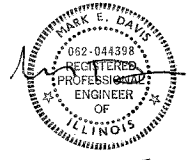
**NON-SPECIAL WASTE DISPOSAL SCHEDULE**

STATION TO STATION	ROUTE	TYPE	DEPTH	REMOVAL CU YD
LT. 462+48 TO 463+18	50	STORM/C&G	3.0	213.0
LT. 463+07 TO 46+23	50	ISLAND	3.0	14.7
RT. 2306+60 TO 2308+00	51	C&G	3.0	38.9
RT. 2308+00 TO 2308+75	51	STORM/C&G	3.0	39.8
RT. 2308+75 TO 2309+70	51	S.S./C&G/C.E.	3.0	129.9
LT. 2315+15 TO 2315+95	51	EX PAV./INLET	4.0	148.9
RT. 2316+14 TO 2316+63	51	STORM/C&G	4.0	47.4
RT. 2316+95 TO 2317+79	51	STORM/C&G	4.0	131.5
LT. 2318+70 TO 2320+02	51	S.S./C&G/C.E.	3.0	248.5
RT. 2318+85 TO 2319+87	51	S.S./C&G/C.E.	2.0	137.1
LT. 2320+02 TO 2320+70	51	S.S./C&G/C.E.	4.0	201.6
RT. 2319+87 TO 2322+17	51/50	S.S./C&G/C.E.	2.0	177.7
LT. 1331+70 TO 1333+34	51	S.S./C&G/C.E.	5.0	319.0
RT. 464+23 TO 465+48	50	C&G	3.0	52.1
LT. 464+27 TO 465+39	50	S.S./C&G/C.E.	3.0	159.8
LT. 465+39 TO 466+19	50	S.S./C&G/C.E.	3.0	43.8
LT. 474+35 TO 475+67	50	S.S./C&G/C.E.	3.0	218.2
LT. 480+00 TO 481+65	50	S.S./C&G/C.E.	3.0	262.7
<b>TOTALS</b>				<b>2584.5</b>

PLAN	DATE
BY	
NO.	
NO.	
NO.	
NO.	



STATION EQUATION:  
 STA. 1306+97.10 (US ROUTE 51)  
 = STA. 463+79.06 (US ROUTE 50)



REVISIONS	
NAME	DATE

ILLINOIS DEPARTMENT OF TRANSPORTATION

**POTENTIAL SOIL CONTAMINATION LOCATIONS**

SCALE: VERT. N/A  
 HORIZ. 1" = 20'

DATE 06-27-03

DRAWN BY ELA  
 CHECKED BY AEF

DATE: 06-27-03  
 DRAWN BY: ELA  
 CHECKED BY: AEF

I:\WORK\PROJECTS\CONTRACT\94700\2303-2309.DWG