

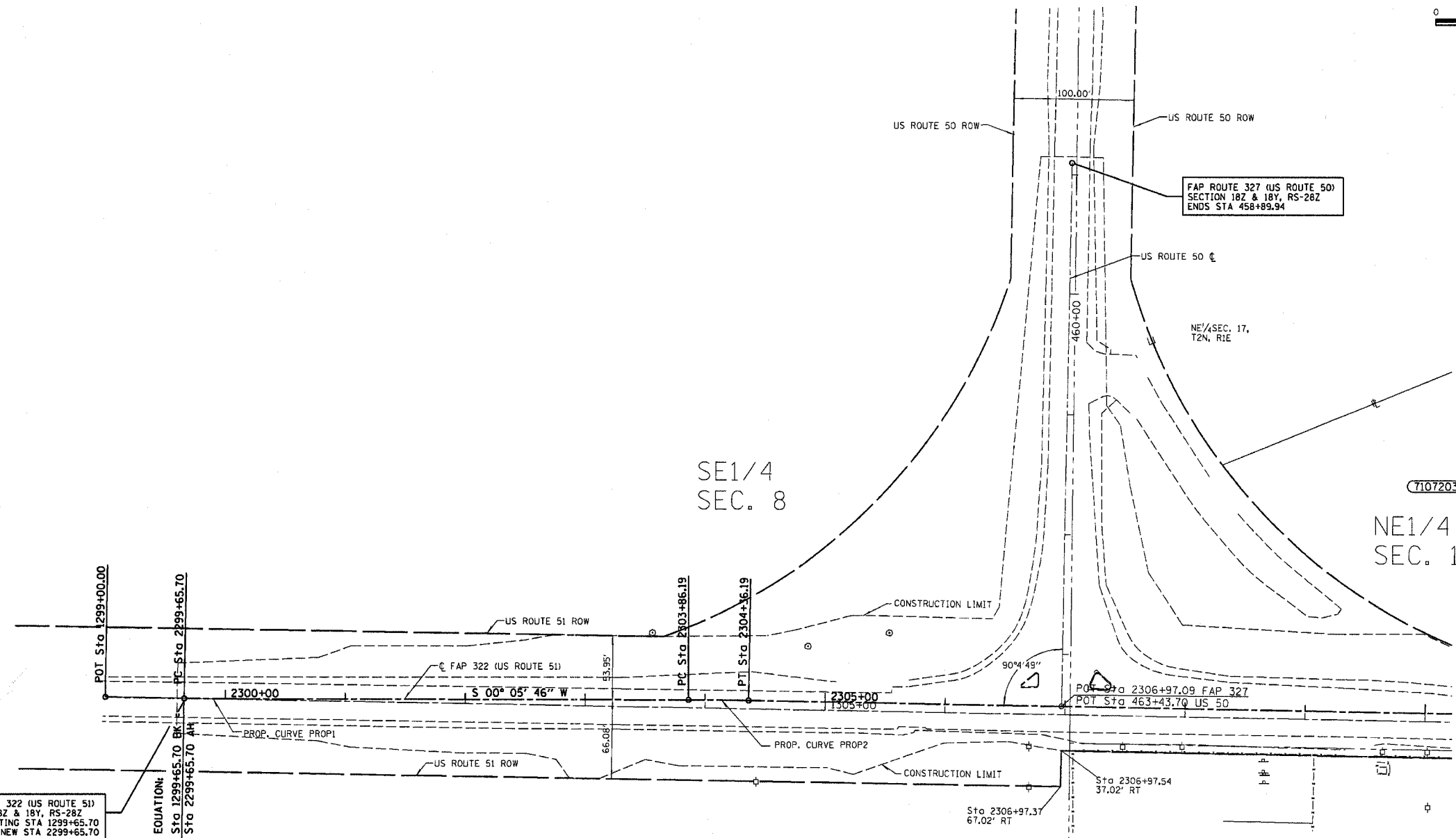
T 2 N R 1 E 3rd PM

SANDOVAL TWP



222A

•DCN-SPEC•  
•DATE•



FAP ROUTE 322 (US ROUTE 51)  
SECTION 18Z & 18Y, RS-28Z  
ENDS EXISTING STA 1299+65.70  
NEW STA 2299+65.70

EQUATION:  
Sta 1299+65.70 BK  
Sta 2299+65.70 AH

PROP. CURVE PROP1  
PI STA. = 2299+90.70  
Δ = 00° 57' 14" (LT)  
D = 01° 54' 28"  
R = 3,003.39'  
T = 25.00'  
L = 50.00'  
E = 0.10'  
P.C. STA. = 2299+65.70  
P.T. STA. = 2300+15.70

PROP. CURVE PROP2  
PI STA. = 2304+11.19  
Δ = 00° 57' 14" (RT)  
D = 01° 54' 28"  
R = 3,003.39'  
T = 25.00'  
L = 50.00'  
E = 0.10'  
P.C. STA. = 2303+86.19  
P.T. STA. = 2304+36.19

- LEGEND
- (R) =RECORDED DISTANCE
  - Δ =DELTA ANGLE
  - D =DEGREE OF CURVE
  - R =RADIUS
  - T =TANGENT LENGTH
  - L =LENGTH OF CURVE
  - C =CHORD LENGTH
  - PC =POINT OF CURVATURE
  - PT =POINT OF TANGENCY
  - PI =POINT OF INTERSECTION
  - POC =POINT ON CURVE
  - ⊙ =5/8" IRON ROD
  - =PROPERTY LINE

NOTE: BEARINGS ARE REFERENCED TO THE ILLINOIS STATE PLANE COORDINATE SYSTEM, EAST ZONE, NORTH AMERICAN DATUM (NAD 1983)

NOTE: ALL AREAS ARE IN SQUARE FEET UNLESS OTHERWISE NOTED.

NOTE: TEMPORARY EASEMENTS ARE NEEDED AS A WORK AREA

JOB NO. R-97-007-01

WILSONS  
ADDITION  
OF SANDOVAL

NW1/4  
SEC. 17

RIGHT OF WAY PLANS  
FAP ROUTE 327  
PROJECT SANDOVAL SECTION 18Z & 18Y, RS-28Z  
STATION 1299+00.00 TO  
STATION 2310+00.00  
COUNTY MARION  
SCALE 1"=50' SHEET 222K OF 222