

STATE OF ILLINOIS
DEPARTMENT OF TRANSPORTATION
DIVISION OF HIGHWAYS
PLANS FOR PROPOSED
BRIDGE REPLACEMENT AND REHABILITATION PROGRAM
GRADE CROSSING PROTECTION FUND

ROUTE NO. T.R. 553	SECTION 03-10117 -00-BR	COUNTY JEFFERSON	TOTAL SHEETS 19
FED. ROAD DIST. NO.		ILLINOIS	FED. AID PROJECT-

CONTRACT NO. 95423

- INDEX OF SHEETS**
1. COVER SHEET
 2. SUMMARY OF QUANTITIES AND TYPICAL CROSS SECTIONS
 3. EROSION CONTROL PLAN
 4. PLAN AND PROFILE
 - 5.-12. STATION CROSS SECTIONS
 - 13.-18. BRIDGE PLANS
 19. BORINGS

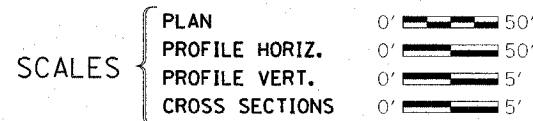
HIGHWAY STANDARDS:

- 280001-02 TEMPORARY EROSION CONTROL
- 515001-02 NAME PLATE FOR BRIDGES
- 630001-06 STEEL PLATE BEAM GUARDRAIL
- 630301-03 SHOULDER WIDENING FOR TYPE 1, (SPECIAL) GUARDRAIL TERMINALS
- 631026-02 TRAFFIC BARRIER TERMINAL, TYPE 5 AND 5A
- 635006-02 REFLECTOR AND TERMINAL MARKER PLACEMENT
- 702001-06 TRAFFIC CONTROL DEVICES
- BLR 21-6 TYPICAL APPLICATION OF TRAFFIC CONTROL DEVICES FOR CONSTRUCTION ON RURAL LOCAL HIGHWAYS

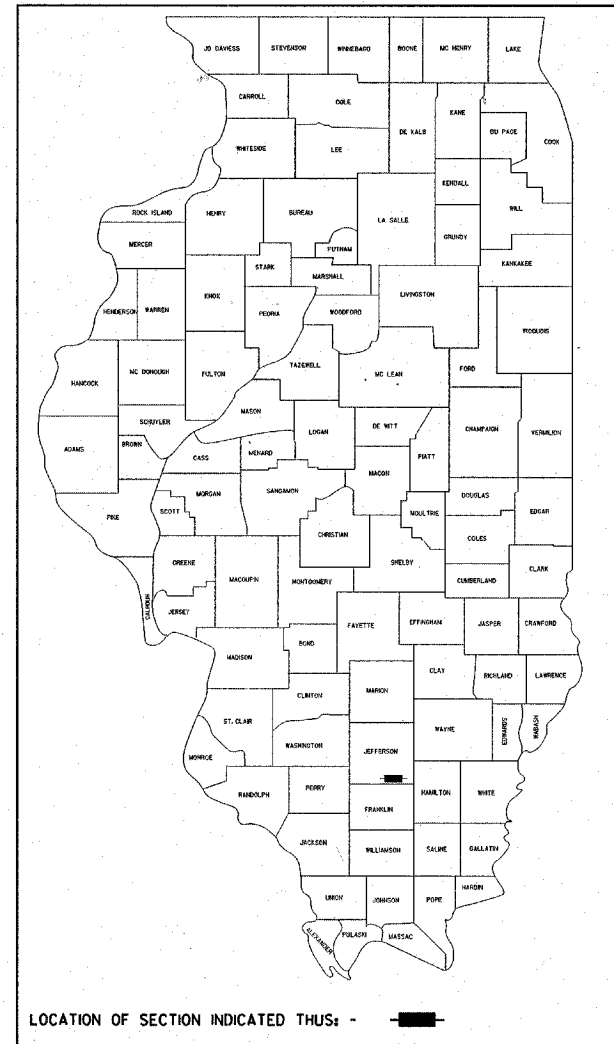
UTILITIES

TRI-COUNTY ELECTRIC COOPERATIVE, INC.
P.O. BOX 309
3906 BROADWAY STREET
MOUNT VERNON, IL 62864
ATTN: SUE ECHOLS
618-244-5151

DESIGN FUNCTIONAL CLASSIFICATION:
LOCAL ROAD 0-250 ADT
DESIGN TRAFFIC: 175 ADT
DESIGN SPEED: 30 M.P.H.



PROJECT BROS-081(44)
SECTION 03-10117-00-BR
MOORES PRAIRIE ROAD DISTRICT
JEFFERSON COUNTY
T.R. 553 OVER C.N.I.C. R.R.
C-97-027-05



THE ACCEPTANCE OF THIS PROJECT IS BASED ON THE MINIMUM DESIGN CRITERIA FOR A FEDERAL AID BRRP TYPE IMPROVEMENT.

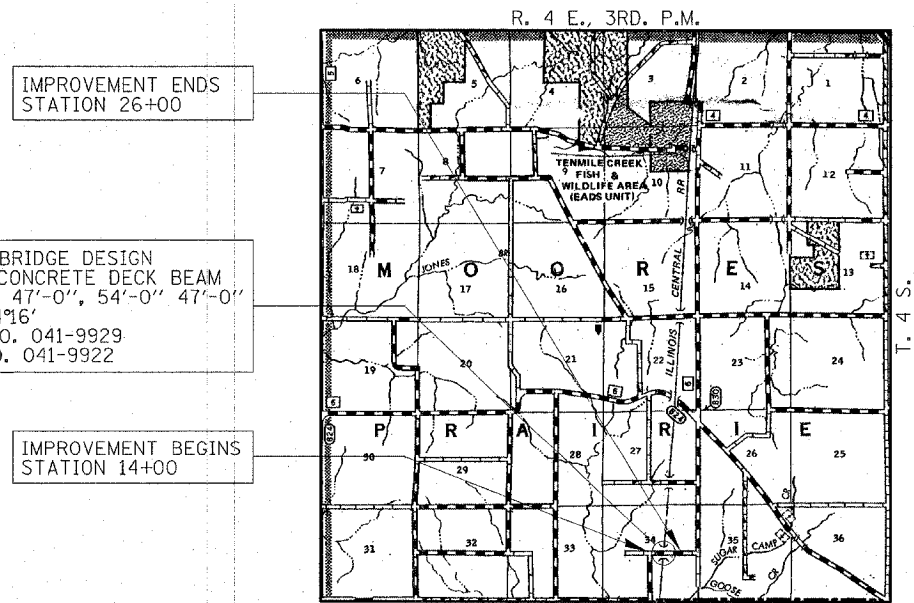
Maureen E. Kead
DISTRICT ENGINEER OF LOCAL ROADS & STREETS

APPROVED *1-11-2006*
Duane E. Smke
ROAD DISTRICT COMMISSIONER

APPROVED *1-11-2006*
Steve Schaebe
COUNTY ENGINEER

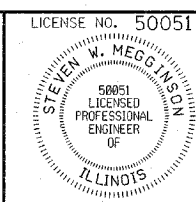
PASSED *2/27/2006*
Maureen E. Kead
DISTRICT ENGINEER OF LOCAL ROADS & STREETS

APPROVED *2/24/2006*
Chris M. Reed
REGIONAL ENGINEER
STATE OF ILLINOIS
DEPARTMENT OF TRANSPORTATION



LAYOUT
APPROXIMATE SCALE: 0 1 MILE
NET LENGTH OF SECTION = 1,200 FEET = 0.23 MILES

DATE: *January 4 2006*
BY: *Steven W. Megginson*
LICENSE EXPIRES: NOVEMBER 30, 2007



HLR
Rice, Berry and Associates
A Division of Hampton, Lenzini and Renwick, Inc.
Civil & Structural Engineers
3085 Stevenson Drive
Suite 201
Springfield, Illinois 62703
217-546-3400
P.O. Box 1036
Duquoin, Illinois 62832
618-790-4637