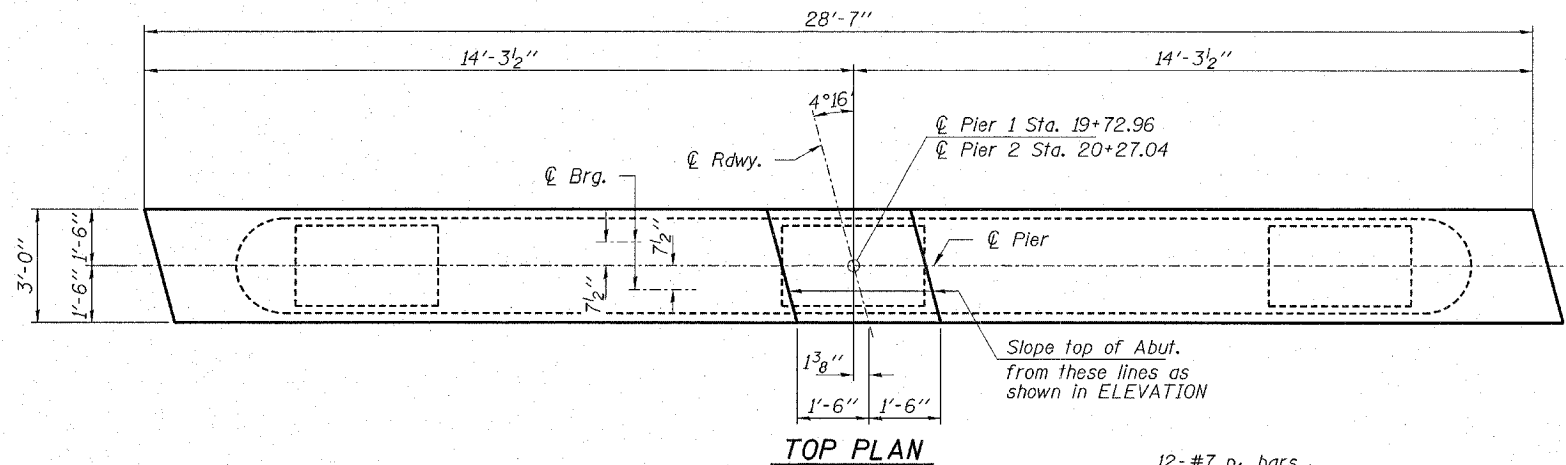
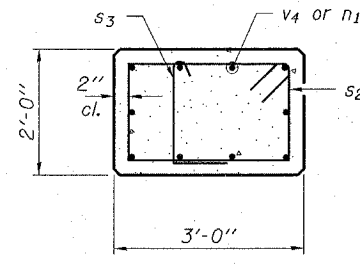


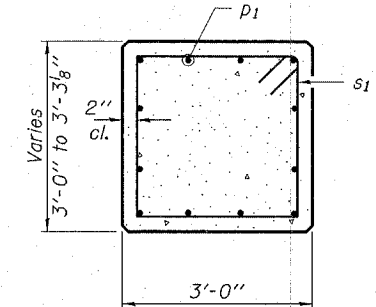
CONTRACT NO. 95423



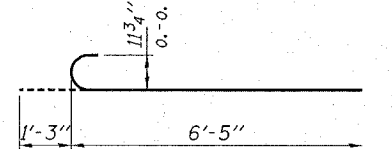
TOP PLAN



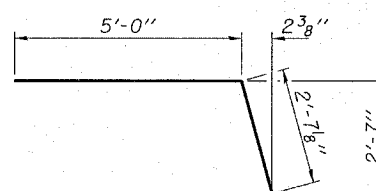
SECTION B-B



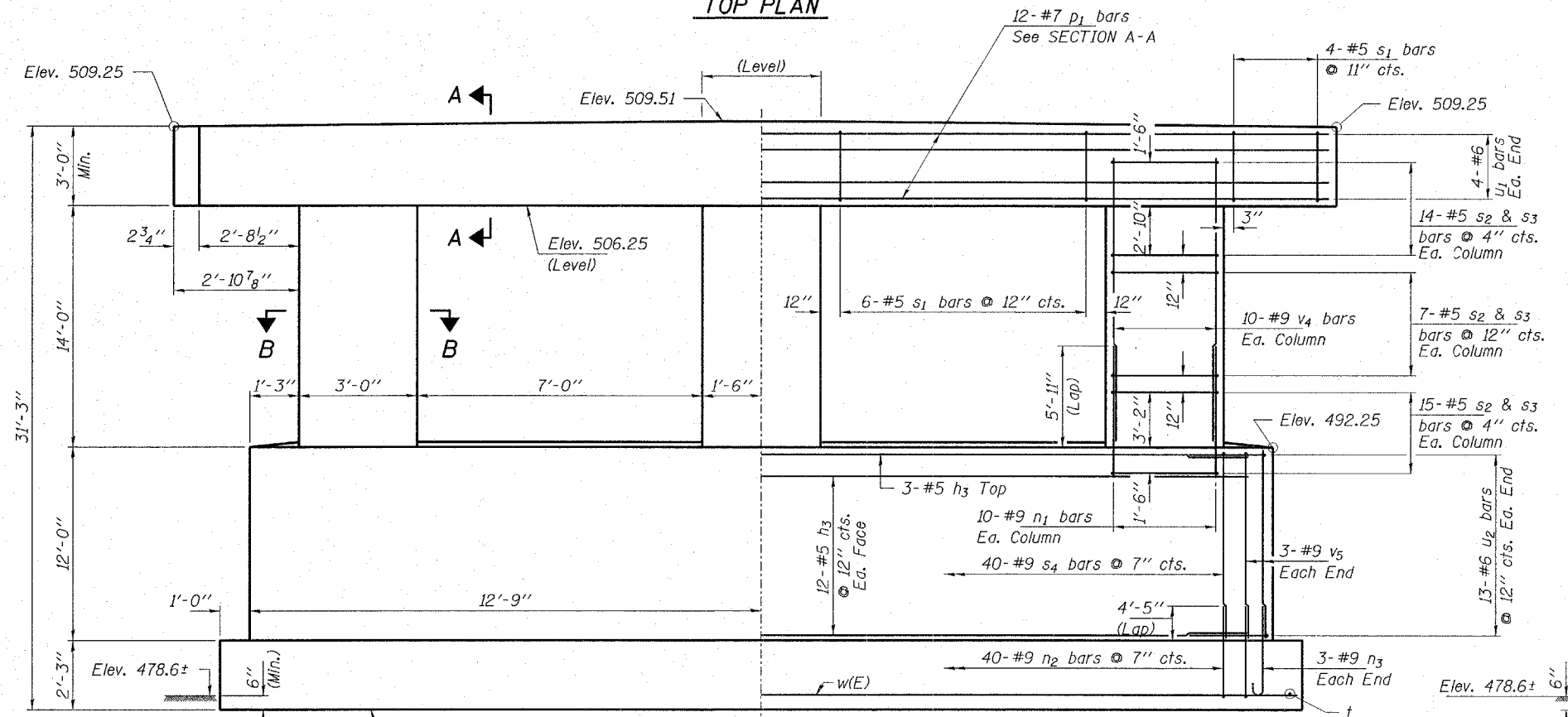
SECTION A-A



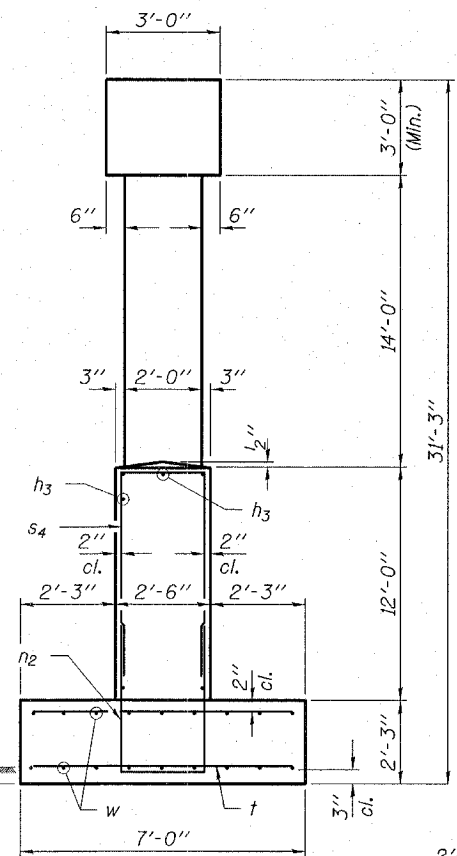
BAR n3



BAR u1



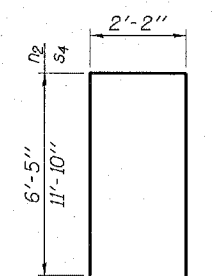
ELEVATION
(Looking West)



END VIEW

MIN. BAR LAP
#9 = 4'-5"

$q_{max} = 10.0 \text{ k.s.f.}$

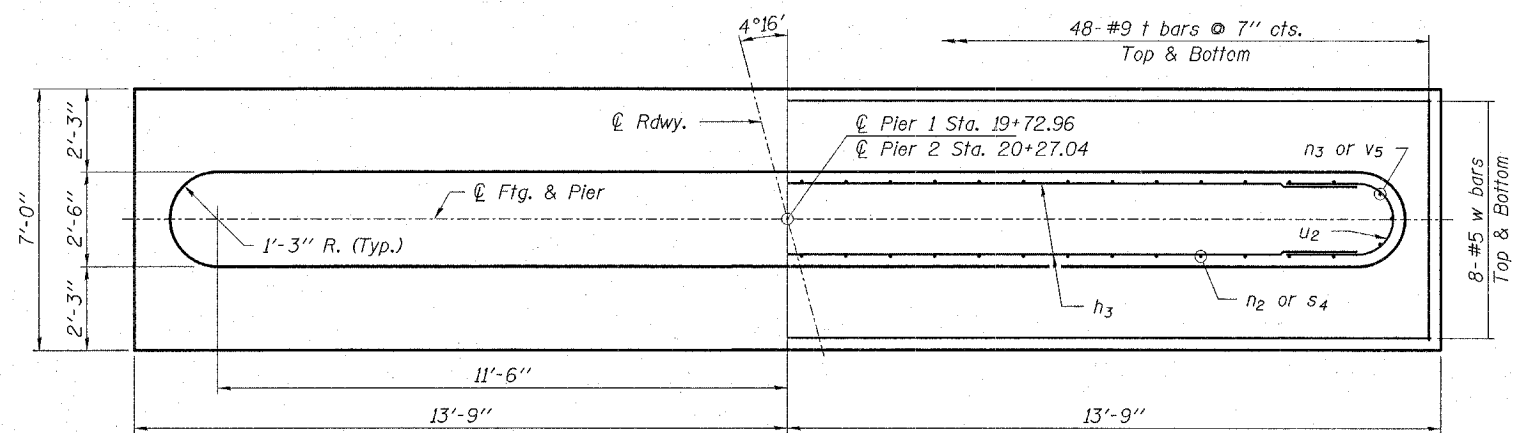


BAR n2 & s4

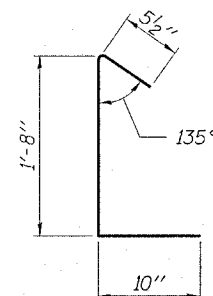
Notes:
Space reinforcement in cap to miss dowel rods.
All edges shall have standard 3/4" chamfer except as noted.

BILL OF MATERIAL - 2 PIERS

BAR	NO.	SIZE	LENGTH	SHAPE
h3	54	#5	23'-0"	—
n1	60	#9	10'-5"	—
n2	80	#9	15'-0"	⏏
n3	12	#9	7'-8"	⏏
p1	24	#7	28'-3"	—
s1	40	#5	11'-7"	⏏
s2	216	#5	9'-7"	⏏
s3	216	#5	3'-0"	⏏
s4	80	#9	25'-10"	⏏
t	192	#9	6'-8"	—
u1	16	#6	12'-7"	⏏
u2	52	#6	13'-5"	⏏
v4	60	#9	12'-6"	—
v5	12	#9	11'-10"	—
w	32	#5	27'-2"	—
Concrete Structures			Cu. Yd.	126.2
Reinforcement Bars			Pound	29,190
Rock Excavation			Cu. Yd.	8.6
Structure Excavation			Cu. Yd.	200



FOOTING PLAN



BAR s3

HLR
Roe, Berry and Associates
A Division of Hampton,
Lenzini and Renwick, Inc.
Civil & Structural Engineers
3085 Stevenson Drive
Suite 201
Springfield, Illinois 62703
217-546-3400
P.O. Box 1036
DuQuoin, Illinois 62832
618-790-4637
Date: 01/04/06
DESIGNED: S.M.S. CHECKED: S.W.M. DRAWN: D.B.

PIERS
SECTION 03-10117-00-BR
MOORES PRAIRIE ROAD DISTRICT
JEFFERSON COUNTY
STRUCTURE NO. 041-9929 STATION 20+00