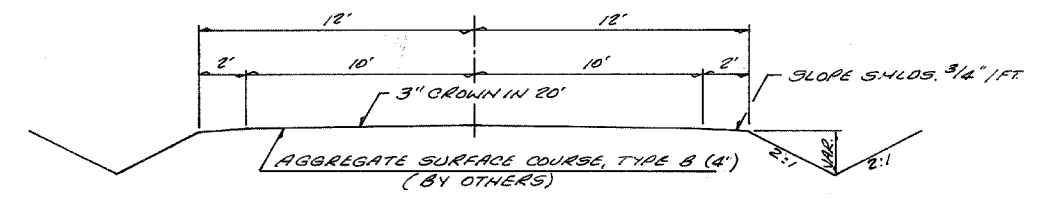
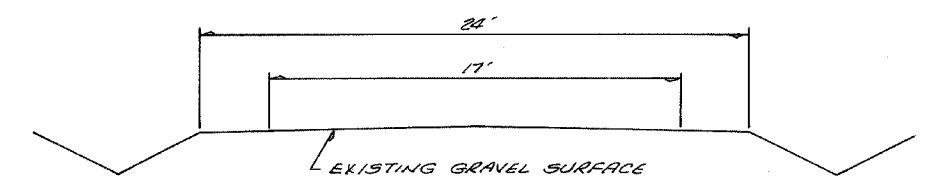


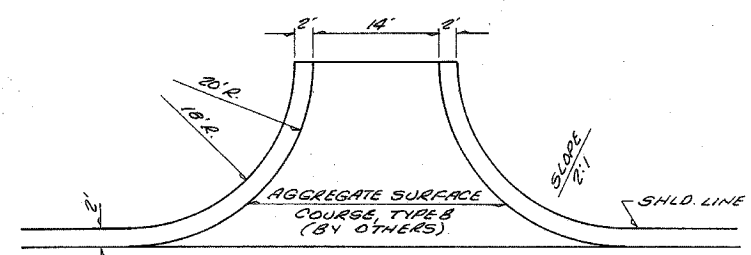
F.A.B. ROUTE NO.	SECTION	COUNTY	TOTAL SHEETS	SHEET
05-06129-00-BR		CRAWFORD	9	2
STA. 0+00		TO STA. 8+00		
FED. ROAD DIST. NO.	ILLINOIS	PROJECT		



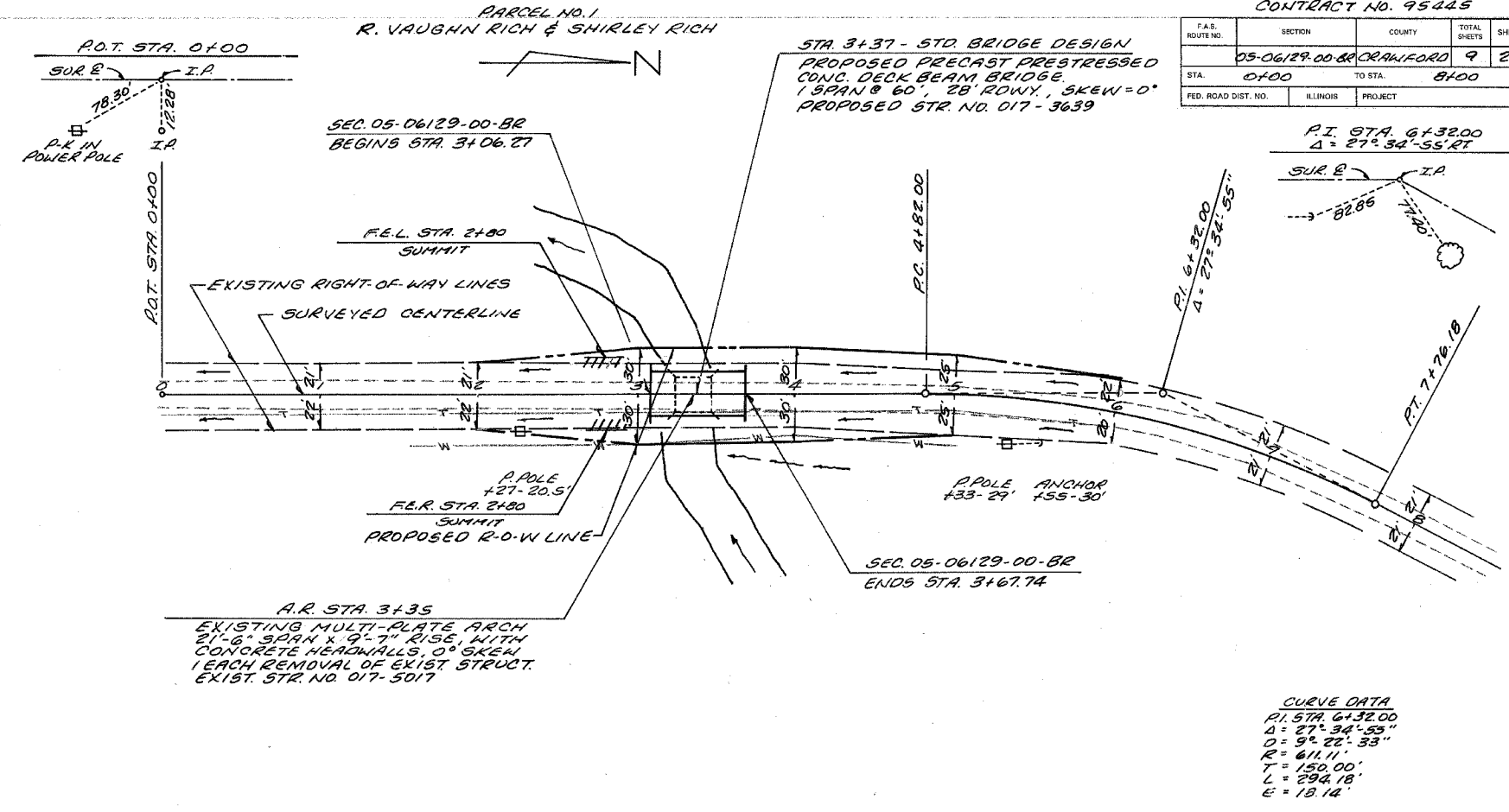
TYPICAL SECTION OF PROPOSED IMPROVEMENT (BY OTHERS)



DETAIL OF EXISTING ROADWAY



DETAIL OF FIELD ENTRANCES (BY OTHERS)



CURVE DATA
 P.I. STA. 6+32.00
 Δ = 27° 34' 55"
 Δ = 9° 22' 33"
 R = 611.11'
 T = 150.00'
 L = 294.18'
 E = 13.14'

PARCEL NO. 2
 DOUG PIFER, MELINDA PIFER, STEPHEN PIFER & KAREN PIFER

B.M. #1 ELEV. 471.45
 P.K. IN POWER POLE
 RT. STA. 0+78

CHANNEL EXCAVATION = 356 CU. YD.

B.M. #2 ELEV. 484.40
 P.K. IN POWER POLE
 RT. STA. 5+33

UTILITIES
 ELECTRIC: NORRIS ELECTRIC COOP
 PH. 618-783-8765
 TELEPHONE: FLAT ROCK TELEPHONE CO.
 PH. 618-584-3211
 WATER: HARDYVILLE WATER CO.
 PH. 618-557-3556

