

SUMMARY OF QUANTITIES

CODE NO.	ITEM	QUANTITY	UNIT
20100110	TREE REMOVAL (6 TO 15 UNITS DIAMETER)	20	UNIT
20100500	TREE REMOVAL, ACRES	0.02	ACRE
20200100	EARTH EXCAVATION	692	CU. YD.
20400800	FURNISHED EXCAVATION	10120	CU. YD.
20800150	TRENCH BACKFILL	16	CU. YD.
25001000	SEEDING, CLASS 2 (SPECIAL)	7.5	ACRE
28000300	TEMPORARY DITCH CHECKS	54	EACH
28100807	STONE DUMPED RIPRAP, CLASS A4	40	TON
35101400	AGGREGATE BASE COURSE, TYPE B	835	TON
40200800	AGGREGATE SURFACE COURSE, TYPE B	100	TON
40600100	BITUMINOUS MATERIALS (PRIME COAT)	6072	GAL
40600300	AGGREGATE (PRIME COAT)	165	TON
40600990	TEMPORARY RAMP	150	SQ. YD.
42000300	PORTLAND CEMENT CONCRETE PAVEMENT B"	579	SQ. YD.
42001200	PAVEMENT FABRIC	563	SQ. YD.
42400100	PORTLAND CEMENT CONCRETE SIDEWALK 4 INCH	30	SQ. FT.
42400410	PORTLAND CEMENT CONCRETE SIDEWALK 8 INCH	57	SQ. FT.
44000075	BITUMINOUS SURFACE REMOVAL (COLD MILLING)	143	SQ. YD.
44000100	PAVEMENT REMOVAL	1616	SQ. YD.
44000600	SIDEWALK REMOVAL	112	SQ. FT.
48101200	AGGREGATE SHOULDERS, TYPE B	1409	TON
50105220	PIPE CULVERT REMOVAL	480	FOOT
54020202	PRECAST CONCRETE BOX CULVERT 2'x2' (M273)	24	FOOT
54020402	PRECAST CONCRETE BOX CULVERT 4'x2' (M273)	21	FOOT
54020602	PRECAST CONCRETE BOX CULVERT 6'x2' (M273)	25	FOOT
54020803	PRECAST CONCRETE BOX CULVERT 8'x3' (M273)	34	FOOT
54020808	PRECAST CONCRETE BOX CULVERT 8'x8' (M273)	59	FOOT
54200427	PIPE CULVERTS, TYPE 1 RCP 12"	84	FOOT
54200451	PIPE CULVERTS, TYPE 1 RCP 36"	81	FOOT
54200637	PIPE CULVERTS, TYPE 1, CORRUGATED STEEL OR ALUMINUM CULVERT PIPE 12"	169	FOOT
54200640	PIPE CULVERTS, TYPE 1, CORRUGATED STEEL OR ALUMINUM CULVERT PIPE 15"	115	FOOT
54200643	PIPE CULVERTS, TYPE 1, CORRUGATED STEEL OR ALUMINUM CULVERT PIPE 18"	52	FOOT
54200649	PIPE CULVERTS, TYPE 1, CORRUGATED STEEL OR ALUMINUM CULVERT PIPE 24"	10	FOOT
54207165	PIPE CULVERTS, TYPE 1, REINFORCED CONCRETE - ELLIPTICAL, EQUIVALENT ROUND-SIZE 30"	46	FOOT
56109210	WATER VALVES TO BE ADJUSTED	4	EACH
60228600	MANHOLES, SPECIAL WITH TYPE 1 FRAME, CLOSED LID	1	EACH

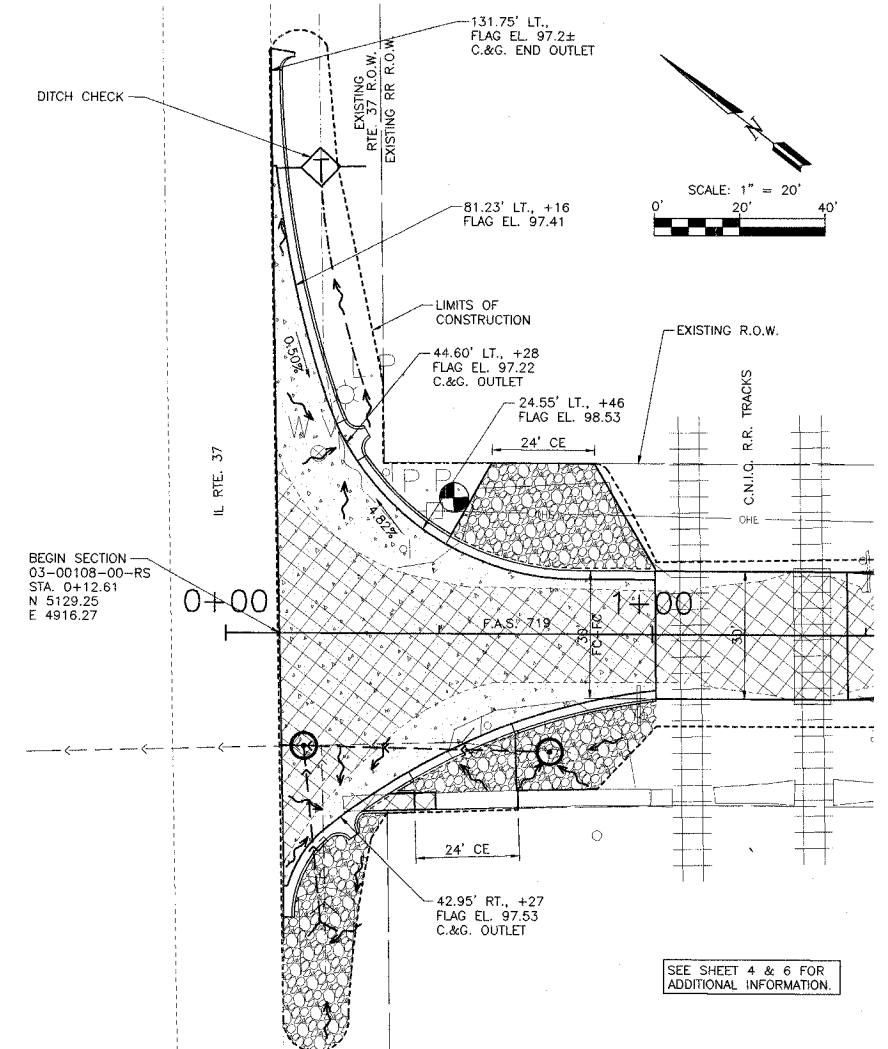
CODE NO.	ITEM	QUANTITY	UNIT
60236200	INLETS, TYPE A, TYPE B GRATE	1	EACH
6065000	COMBINATION CONCRETE CURB AND GUTTER, TYPE B-6.24	264	FOOT
63000000	STEEL PLATE BEAM GUARD RAIL, TYPE A	487.5	FOOT
63100070	TRAFFIC BARRIER TERMINAL, TYPE 5	4	EACH
63200310	GUARDRAIL REMOVAL	1115	FOOT
66600105	FURNISHING AND ERECTING RIGHT-OF-WAY MARKERS	12	EACH
67100100	MOBILIZATION	1	L. SUM
70100450	TRAFFIC CONTROL AND PROTECTION STANDARD 701201	1	L. SUM
70100460	TRAFFIC CONTROL AND PROTECTION STANDARD 701306	1	L. SUM
70101800	TRAFFIC CONTROL AND PROTECTION (SPECIAL)	1	L. SUM
70102620	TRAFFIC CONTROL AND PROTECTION STANDARD 701501	1	L. SUM
70300220	TEMPORARY PAVEMENT MARKING - LINE 4"	6600	FOOT
78001110	PAINT PAVEMENT MARKING - LINE 4"	59110	FOOT
78001180	PAINT PAVEMENT MARKING - LINE 24"	56	FOOT
78201000	TERMINAL MARKER - DIRECT APPLIED	4	EACH
X0336900	PRECAST CONCRETE BOX CULVERT END SECTIONS 8'x3'	4	EACH
X0323973	SEDIMENT CONTROL, SILT FENCE	2002	FOOT
X0914300	PRECAST CONCRETE BOX CULVERT END SECTIONS 4'x2'	4	EACH
X0954600	PRECAST CONCRETE BOX CULVERT END SECTIONS 6'x2'	4	EACH
X4066416	BITUMINOUS CONCRETE SURFACE COURSE, SUPERPAVE, MIX "C", N70	5519	TON
X4066616	BITUMINOUS CONCRETE BINDER COURSE, SUPERPAVE, IL-19.0, N70	8555	TON
Z0013825	CONTROLLED LOW-STRENGTH MATERIAL	31	CU. YD.
Z0022800	FENCE REMOVAL	144	FOOT
Z0048665	RAILROAD PROTECTIVE LIABILITY INSURANCE	1	L. SUM
XX002134	CONCRETE CURB AND GUTTER OUTLET SPECIAL	2	EACH
XX003168	WORK ZONE PAVEMENT MARKING REMOVAL, SPECIAL	2200	FOOT
XX004770	PRECAST CONCRETE BOX CULVERT END SECTION 2x2 (M273)	3	EACH
63100167	TRAFFIC BARRIER TERMINAL, TYPE 1, SPECIAL (TANGENT)	2	EACH
42400800	DETECTABLE WARNING	6	SQ. FT.
XX006523	PRECAST CONCRETE BOX CULVERT END SECTIONS 8'x8'	2	EACH
XX006524	CONCRETE COLLAR, SPECIAL (2'x2')	3	EACH
XX006525	CONCRETE COLLAR, SPECIAL (4'x2')	4	EACH
XX006526	CONCRETE COLLAR, SPECIAL (6'x2')	4	EACH
XX006528	CONCRETE COLLAR, SPECIAL (DOUBLE 8'x3')	2	EACH
XX006527	CONCRETE COLLAR, SPECIAL (8'x8')	2	EACH
XX006520	MANHOLES, TYPE A, SPECIAL, 4'-DIAMETER, RECESSED FRAME & OPEN LID	1	EACH
XX006529	CONCRETE CURB AND GUTTER END OUTLET SPECIAL	1	EACH

* SPECIALTY ITEMS

ROUTE NO.	SECTION	COUNTY	TOTAL SHEETS	SHEET NO.
FAS 719	03-00108-00-RS	FAYETTE	49	3
FED. ROAD DIST. NO.		ILLINOIS	PROJECT	

CONTRACT NO. 95460

ENLARGEMENT OF CONCRETE PAVEMENT - IL RTE. 37 AND FAS 719 INTERSECTION

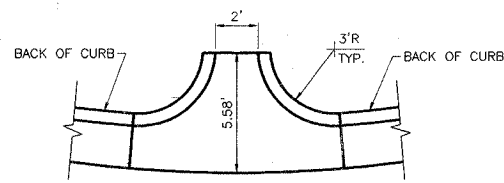


HORIZONTAL CONTROL COORDINATES

POINT	LOCATION	N. COOR.	E. COOR.	ELEV.
HC#1 (IRON PIN)	12.91' RT., STA. 1+66.07	5000.00	5000.00	101.64
HC#2 (IRON PIN)	59.74' RT., STA. 12+42.51	4162.95	5702.37	100.23
HC#3 (IRON PIN)	26.92' RT., STA. 39+75.74	3881.81	8436.88	96.11
HC#4 (IRON PIN)	14.33' LT., STA. 60+71.06	3705.36	10525.11	92.06
HC#5 (IRON PIN)	13.62' RT., STA. 75+00.65	3533.01	11944.48	93.86
HC#6 (IRON PIN)	13.95' RT., STA. 88+88.75	3387.41	13324.96	99.21
HC#7 (IRON PIN)	12.93' LT., STA. 102+51.18	3272.05	14682.76	98.42
HC#8 (IRON PIN)	12.83' LT., STA. 116+87.70	3118.18	16111.06	90.55
HC#9 (IRON PIN)	13.27' LT., STA. 130+98.51	2971.41	17514.20	86.12
HC#10 (IRON PIN)	13.67' LT., STA. 145+15.42	2820.54	18923.02	82.40
HC#11 (IRON PIN)	14.70' LT., STA. 154+17.08	2724.79	19819.65	75.53
HC#12 (IRON PIN)	13.07' LT., STA. 168+02.77	2577.71	21197.44	58.84
HC#13 (IRON PIN)	14.09' LT., STA. 180+02.84	2450.48	22390.76	66.88
HC#14 (IRON PIN)	15.12' RT., STA. 187+49.17	2338.58	23129.14	78.57
HC#15 (IRON PIN)	14.02' RT., STA. 202+51.81	2158.21	24620.85	78.16
HC#16 (IRON PIN)	13.74' RT., STA. 216+51.15	1985.06	26009.45	76.94

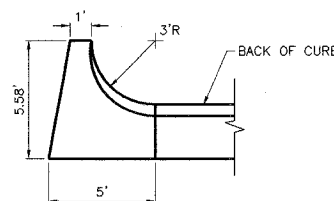
TREE REMOVAL

LOCATION	UNIT	ACRE
LT. STA. 148+50±	-	0.02
RT. STA. 159+35±	8	-
RT. STA. 159+35±	12	-



CONCRETE CURB AND GUTTER OUTLET

PAID FOR AT THE CONTRACT UNIT PRICE PER EACH FOR CONCRETE CURB AND GUTTER OUTLET SPECIAL



CONCRETE CURB AND GUTTER END OUTLET

PAID FOR AT THE CONTRACT UNIT PRICE PER EACH FOR CONCRETE CURB AND GUTTER END OUTLET SPECIAL

BENCH MARK INFORMATION

POINT	LOCATION	ELEV.
BM#1 (R.R. SPIKE IN POWER POLE)	28.48' LT., STA. 0+47.99	100.00
BM#2 (NE BOLT ON TOP RIM OF FIRE HYDRANT)	59.35' RT., STA. 12+04.31	102.68
BM#3 (R.R. SPIKE IN POWER POLE)	39.52' LT., STA. 203+06.19	78.86

ROADWAY & LOCAL TIES

ROADWAY STATION	N. COORD.	E. COORD.
212+00	2054.57	25563.47
217+00	1992.65	26059.62

SEE PLAN & PROFILE SHEETS FOR ADDITIONAL INFORMATION

STS CONSULTANTS
 2524 South Broadway
 Salem, Illinois 62881
 Ph: (618) 548-3500
 Fax: (618) 548-5246
 IL Design Firm Reg. No. 184-001518

ROADWAY RECONSTRUCTION
 FAS 719 SECTION 03-00108-00-RS
 FAYETTE COUNTY, ILLINOIS

SUMMARY OF QUANTITIES AND MISCELLANEOUS DETAILS

DESIGNED BY	CHECKED BY	DATE
JAS	JAS	01/09/06
DRAWN BY	APPROVED BY	REVISION
MRQ	MRQ	02/15/06
JSD, BLT		JOB NO. 30084